

Oklahoma Corporation Commission
Oil & Gas Conservation Division
Post Office Box 52000
Oklahoma City, Oklahoma 73152-2000
Rule 165: 10-3-25

Form 1002A

API No.: 35003214150001

Completion Report

Spud Date: August 25, 1986

OTC Prod. Unit No.: 003-048518

Drilling Finished Date: September 07, 1986

1st Prod Date: September 26, 1986

Amended

Completion Date: September 22, 1986

Amend Reason: RE-CLASSIFY AS TEMPORARILY ABANDONED (SEE REMARKS)

Recomplete Date: April 25, 2018

Drill Type: STRAIGHT HOLE

Well Name: KASSIK 2-19

Purchaser/Measurer:

Location: ALFALFA 19 24N 12W
C NW
1320 FSL 1320 FWL of 1/4 SEC
Derrick Elevation: 1378 Ground Elevation: 1384

First Sales Date:

Operator: CHESAPEAKE OPERATING LLC 17441
PO BOX 18496
6100 N WESTERN AVE
OKLAHOMA CITY, OK 73154-0496

Completion Type	
<input type="checkbox"/>	Single Zone
<input type="checkbox"/>	Multiple Zone
<input checked="" type="checkbox"/>	Commingled

Location Exception	
Order No	
There are no Location Exception records to display.	

Increased Density	
Order No	
301570	

Casing and Cement							
Type	Size	Weight	Grade	Feet	PSI	SAX	Top of CMT
SURFACE	8 5/8	24	K-55	892		1325	SURFACE
PRODUCTION	4 1/2	10.5	J-55	6750	1500	645	5028

Liner								
Type	Size	Weight	Grade	Length	PSI	SAX	Top Depth	Bottom Depth
There are no Liner records to display.								

Total Depth: 6750

Packer	
Depth	Brand & Type
There are no Packer records to display.	

Plug	
Depth	Plug Type
There are no Plug records to display.	

Initial Test Data										
Test Date	Formation	Oil BBL/Day	Oil-Gravity (API)	Gas MCF/Day	Gas-Oil Ratio Cu FT/BBL	Water BBL/Day	Pumpin or Flowing	Initial Shut-In Pressure	Choke Size	Flow Tubing Pressure
Mar 30, 2018	OSWEGO-MANNING-MISSISSIPPI									

Completion and Test Data by Producing Formation

Formation Name: OSWEGO

Code: 404OSWG

Class: TA

Spacing Orders

Order No	Unit Size
106519	640

Perforated Intervals

From	To
5831	5942

Acid Volumes

There are no Acid Volume records to display.

Fracture Treatments

There are no Fracture Treatments records to display.

Formation Name: MANNING

Code: 354MNNG

Class: TA

Spacing Orders

Order No	Unit Size
106519	640

Perforated Intervals

From	To
6250	6295

Acid Volumes

There are no Acid Volume records to display.

Fracture Treatments

There are no Fracture Treatments records to display.

Formation Name: MISSISSIPPI

Code: 351MISS

Class: TA

Spacing Orders

Order No	Unit Size
106519	640

Perforated Intervals

From	To
6463	6740

Acid Volumes

There are no Acid Volume records to display.

Fracture Treatments

There are no Fracture Treatments records to display.

Formation Name: OSWEGO-MANNING-
MISSISSIPPI

Code:

Class: TA

Formation	Top
TONKAWA	5030
AVANT	5395
COTTAGE GROVE	5464
HOGSHOOTER	5594
BIG LIME (OSWEGO)	5825
VERDIGRIS	6030
INOLA	6226
CHESTER / MANNING	6240
MERAMEC	6400
MISSISSIPPI SOLID	6460

Were open hole logs run? Yes

Date last log run: September 06, 1986

Were unusual drilling circumstances encountered? No

Explanation:

Other Remarks

PULLED PACKER, CORRECTED PRODUCTION 4 1/2" CASING DEPTH AND CORRECTED 1002C. OCC - WELL WAS COMMINGLED BY ORDER NUMBER 306765.

FOR COMMISSION USE ONLY

1139401

Status: Accepted

API NO. 003-21415
 OTC PROD.
 UNIT NO. 003-048518

PLEASE TYPE OR USE BLACK INK ONLY
 NOTE: Attach copy of original 1002A if recompletion or reentry.

OKLAHOMA CORPORATION COMMISSION
 Oil & Gas Conservation Division
 Post Office Box 52000
 Oklahoma City, Oklahoma 73152-2000
 Rule 165-10-3-25

RECEIVED
 Form 1002A Rev. 2009

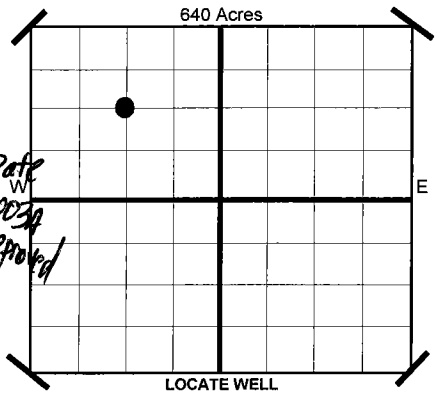
APR 13 2018

ORIGINAL
 AMENDED
 Reason Amended *Reclassify as Temporarily Abandoned (see remarks)*

COMPLETION REPORT

TYPE OF DRILLING OPERATION
 STRAIGHT HOLE SERVICE WELL
 DIRECTIONAL HOLE
 HORIZONTAL HOLE
 If directional or horizontal, see reverse for bottom hole location.

SPUD DATE 8/25/1986
 DRLG FINISHED DATE 9/7/1986
 DATE OF WELL COMPLETION 9/22/1986
 1ST PROD DATE 9/26/1986
 RECOMP DATE 4-25-2018 *Pat W 1002A approved*



COUNTY ALFALFA SEC 19 TWP 24N RGE 12W
 LEASE NAME KASSIK WELL NO 2-19
 SHL 1/4 1/4 C 1/4 NW 1/4 FSL 1320 FWL OF 1/4 SEC 1,320
 ELEVATION Derrick Fl 1,378 Ground 1,384 Latitude (if Known)
 OPERATOR NAME CHESAPEAKE OPERATING, L.L.C. OTC/OCC OPERATOR NO. 17441
 ADDRESS P.O. BOX 18496
 CITY OKLAHOMA CITY STATE OK ZIP 73154

COMPLETION TYPE
 SINGLE ZONE
 MULTIPLE ZONE
 COMMINGLED Application Date Order No. 306765
 LOCATION EXCEPTION ORDER NO. INCREASED DENSITY ORDER NO. 301570

CASING & CEMENT (Form 1002C must be attached)

TYPE	SIZE	WEIGHT	GRADE	FEET	PSI	SAX	TOP	
CONDUCTOR								
SURFACE	8 5/8"	24#	K-55	892		1325	SURFACE	
INTERMEDIATE								
PRODUCTION	4 1/2"	10.5#	J-55	6,750	1500	645	5,028	
LINER								
							TOTAL DEPTH	6,750

PACKER @ N/A BRAND & TYPE
 PLUG @ TYPE PLUG @ TYPE

COMPLETION & TEST DATA BY PRODUCING FORMATION

40405WG 354MANG 351MISS

FORMATION	OSWEGO	MANNING (CHESTER)	MISSISSIPPI
SPACING & SPACING ORDER NUMBER	640 106519	640 106519	640 106519
CLASS: Oil, Gas, Dry, Inj. Disp, Comm Disp, Svc	Temporarily Abandon	Temporarily Abandon	Temporarily Abandon
PERFORATED INTERVALS	5831-5942	6250-6295	6463-6740
ACID/VOLUME			
FRACTURE TREATMENT (Fluids/Prop Amounts)			

Minimum Gas Allowable (165-10-17-7) Gas Purchaser/Measurer
 OR 1st Sales Date
 Oil Allowable (165-10-13-3)

INITIAL TEST DATA

INITIAL TEST DATE	3/30/2018
OIL-BBL/DAY	0
OIL-GRAVITY (API)	
GAS-MCF/DAY	0
GAS-OIL RATIO CU FT/BBL	
WATER-BBL/DAY	0
PUMPING OR FLOWING	
INITIAL SHUT-IN PRESSURE	
CHOKE SIZE	
FLOW TUBING PRESSURE	

AS SUBMITTED

A record of the formations drilled through, and pertinent remarks are presented on the reverse. I declare that I have knowledge of the contents of this report and am authorized by my organization to make this report, which was prepared by me or under my supervision and direction, with the data and facts stated herein to be true, correct, and complete to the best of my knowledge and belief.

JP Powell
 SIGNATURE JP Powell, Regulatory Specialist
 P.O. BOX 18496 OKLAHOMA CITY OK 73154
 ADDRESS CITY STATE ZIP

4/12/2018 405-848-8000
 DATE PHONE NUMBER
 jp.powell@chk.com
 EMAIL ADDRESS

PLEASE TYPE OR USE BLACK INK ONLY

FORMATION RECORD

Give formation names and tops, if available, or descriptions and thickness of formations drilled through. Show intervals cored or drillstem tested.

LEASE NAME KASSIK

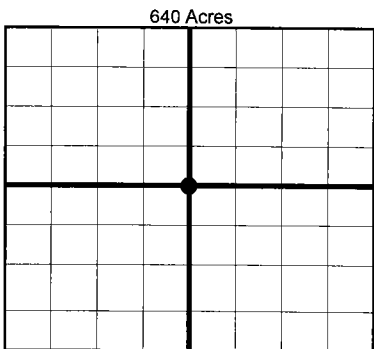
WELL NO. 2-19

NAMES OF FORMATIONS	TOP
TONKAWA	5,030
AVANT	5,395
COTTAGE GROVE	5,464
HOGSHOOTER	5,594
BIG LIME (OSWEGO)	5,825
VERDIGRIS	6,030
INOLA	6,226
CHESTER/MANNING	6,240
MERAMEC	6,400
MISSISSIPPI SOLID	6,460

FOR COMMISSION USE ONLY	
ITD on file <input type="checkbox"/> YES <input type="checkbox"/> NO	
APPROVED _____	DISAPPROVED _____
2) Reject Codes	

Were open hole logs run?	<input checked="" type="checkbox"/> yes	<input type="checkbox"/> no
Date last log was run	9/6/1986	
Was CO ₂ encountered?	<input type="checkbox"/> yes	<input checked="" type="checkbox"/> no at what depths?
Was H ₂ S encountered?	<input type="checkbox"/> yes	<input checked="" type="checkbox"/> no at what depths?
Were unusual drilling circumstances encountered?	<input type="checkbox"/> yes	<input checked="" type="checkbox"/> no
If yes, briefly explain.		

Other remarks: Pulled packer; corrected production 4 1/2" casing depth and corrected 1002C
OCe-well was commingled by order 306765

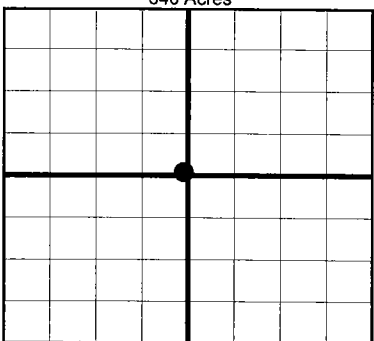


If more than three drainholes are proposed, attach a separate sheet indicating the necessary information.

Direction must be stated in degrees azimuth. Please note, the horizontal drainhole and its end point must be located within the boundaries of the lease or spacing unit.

Directional surveys are required for all drainholes and directional wells.

640 Acres



BOTTOM HOLE LOCATION FOR DIRECTIONAL HOLE

SEC	TWP	RGE	COUNTY
Spot Location			
1/4	1/4	1/4	1/4
Measured Total Depth		True Vertical Depth	Feet From 1/4 Sec Lines FSL FWL
BHL From Lease, Unit, or Property Line:			

BOTTOM HOLE LOCATION FOR HORIZONTAL HOLE: (LATERALS)

SEC	TWP	RGE	COUNTY
Spot Location			
1/4	1/4	1/4	1/4
Depth of Deviation	Radius of Turn	Direction	Total Length
Measured Total Depth	True Vertical Depth	BHL From Lease, Unit, or Property Line:	

LATERAL #2

SEC	TWP	RGE	COUNTY
Spot Location			
1/4	1/4	1/4	1/4
Depth of Deviation	Radius of Turn	Direction	Total Length
Measured Total Depth	True Vertical Depth	BHL From Lease, Unit, or Property Line:	

LATERAL #3

SEC	TWP	RGE	COUNTY
Spot Location			
1/4	1/4	1/4	1/4
Depth of Deviation	Radius of Turn	Direction	Total Length
Measured Total Depth	True Vertical Depth	BHL From Lease, Unit, or Property Line:	