

Oklahoma Corporation Commission
Oil & Gas Conservation Division
Post Office Box 52000
Oklahoma City, Oklahoma 73152-2000
Rule 165: 10-3-25

Form 1002A

API No.: 35073255740000

Completion Report

Spud Date: April 17, 2017

OTC Prod. Unit No.: 073-219172

Drilling Finished Date: June 05, 2017

1st Prod Date: August 10, 2017

Completion Date: July 31, 2017

Drill Type: HORIZONTAL HOLE

Min Gas Allowable: Yes

Well Name: BRADFORD 5-18-5 1H

Purchaser/Measurer: CHESAPEAKE OPERATING LLC

Location: KINGFISHER 5 18N 5W
SE SE SE SW
254 FSL 2366 FWL of 1/4 SEC
Derrick Elevation: 1176 Ground Elevation: 1150

First Sales Date: 08/13/2017

Operator: CHESAPEAKE OPERATING LLC 17441
PO BOX 18496
6100 N WESTERN AVE
OKLAHOMA CITY, OK 73154-0496

Completion Type		Location Exception		Increased Density	
X	Single Zone	Order No		Order No	
	Multiple Zone	668253		There are no Increased Density records to display.	
	Commingled				

Casing and Cement							
Type	Size	Weight	Grade	Feet	PSI	SAX	Top of CMT
SURFACE	9 5/8	36	J-55	1510		580	SURFACE
PRODUCTION	7	26	P-110HC / P-110EC	6486		255	3308

Liner								
Type	Size	Weight	Grade	Length	PSI	SAX	Top Depth	Bottom Depth
LINER	4 1/2	13.5	P-110	5318	0	500	6037	11355

Total Depth: 11337

Packer	
Depth	Brand & Type
There are no Packer records to display.	

Plug	
Depth	Plug Type
11161	CIBP

Initial Test Data										
Test Date	Formation	Oil BBL/Day	Oil-Gravity (API)	Gas MCF/Day	Gas-Oil Ratio Cu FT/BBL	Water BBL/Day	Pumpin or Flowing	Initial Shut-In Pressure	Choke Size	Flow Tubing Pressure
Sep 08, 2017	OSWEGO	261	41	987	3782	326	ARTIFICIA			177

Completion and Test Data by Producing Formation

Formation Name: OSWEGO

Code: 404OSWG

Class: OIL

Spacing Orders

Order No	Unit Size
661014	640

Perforated Intervals

From	To
6305	11156

Acid Volumes

555,900 GALLONS HCL ACID

Fracture Treatments

47,560 BARRELS FRAC FLUID, 150 POUNDS PROPPANT
--

Formation	Top
OSWEGO	6304

Were open hole logs run? No

Date last log run:

Were unusual drilling circumstances encountered? No

Explanation:

Other Remarks

There are no Other Remarks.

Lateral Holes

Sec: 5 TWP: 18N RGE: 5W County: KINGFISHER

NE NE NW NW

180 FNL 1300 FWL of 1/4 SEC

Depth of Deviation: 5779 Radius of Turn: 386 Direction: 2 Total Length: 5033

Measured Total Depth: 11337 True Vertical Depth: 6165 End Pt. Location From Release, Unit or Property Line: 180

FOR COMMISSION USE ONLY

1137658

Status: Accepted

API NO. 073-25574
 OTC PROD.
 UNIT NO. 073-219172

PLEASE TYPE OR USE BLACK INK ONLY
 NOTE:
 Attach copy of original 1002A if recompletion or reentry.

OKLAHOMA CORPORATION COMMISSION
 Oil & Gas Conservation Division
 Post Office Box 52000
 Oklahoma City, Oklahoma 73152-2000
 Rule 165:10-3-25

RECEIVED Form 1002A
 Rev. 2009

SEP 15 2017

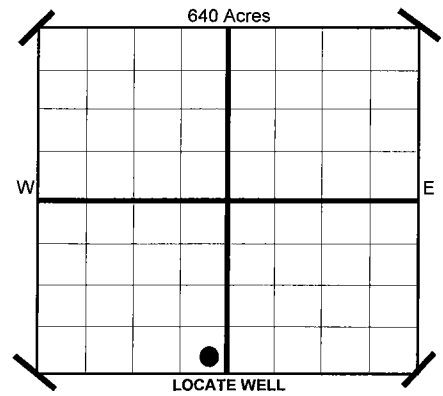
OKLAHOMA CORPORATION COMMISSION

ORIGINAL
 AMENDED
 Reason Amended

COMPLETION REPORT

TYPE OF DRILLING OPERATION
 STRAIGHT HOLE DIRECTIONAL HOLE HORIZONTAL HOLE
 SERVICE WELL
 If directional or horizontal, see reverse for bottom hole location.

SPUD DATE 4/17/2017
 DRLG FINISHED DATE 6/5/2017
 DATE OF WELL COMPLETION 7/31/2017
 1ST PROD DATE 8/10/2017
 RECOMP DATE



COUNTY KINGFISHER SEC 5 TWP 18N RGE 5W
 LEASE NAME BRADFORD 5-18-5 WELL NO 1H
 SHL SE 1/4 SE 1/4 SE 1/4 SW 1/4 FSL 254 FWL OF 1/4 SEC 2,366
 ELEVATION Derrick Fl 1,176 Ground 1,150
 OPERATOR NAME CHESAPEAKE OPERATING, L.L.C. OTC/OCC OPERATOR NO. 17441
 ADDRESS P.O. BOX 18496
 CITY OKLAHOMA CITY STATE OK ZIP 73154

COMPLETION TYPE

SINGLE ZONE
 MULTIPLE ZONE
 Application Date
 COMMINGLED
 Application Date
 LOCATION EXCEPTION ORDER NO. 661347 (INTERIM)
 INCREASED DENSITY ORDER NO. N/A

CASING & CEMENT (Form 1002C must be attached)

TYPE	SIZE	WEIGHT	GRADE	FEET	PSI	SAX	TOP	
CONDUCTOR								
SURFACE	9 5/8"	36#	J-55	1,510		580	SURFACE	
INTERMEDIATE								
PRODUCTION	7"	26#	P-110HC P-110EC	6,486		255	3,308	
LINER	4 1/2"	13.5#	P-110	6,037-11,355		500	6,037	
							TOTAL DEPTH	11,337

PACKER @ N/A BRAND & TYPE
 PLUG @ TYPE
 PLUG @ 11,161 TYPE CIBP
 PLUG @ TYPE

COMPLETION & TEST DATA BY PRODUCING FORMATION

FORMATION	OSWEGO					
SPACING & SPACING ORDER NUMBER	640 661014					Reported to Frac Focus
CLASS: Oil, Gas, Dry, Inj. Disp, Comm Disp, Svc	OIL					
PERFORATED INTERVALS	6,305-11,156					
ACID/VOLUME	HCL Acid 555,900 GAL					
FRACTURE TREATMENT (Fluids/Prop Amounts)	Frac Fluid 47,560 BBL Proppant 150 LB					

Minimum Gas Allowable (165:10-17-7) OR Gas Purchaser/Measurer Chesapeake Operating, L.L.C.
 1st Sales Date 8/13/2017

INITIAL TEST DATA

INITIAL TEST DATE	9/8/2017				
OIL-BBL/DAY	261				
OIL-GRAVITY (API)	41				
GAS-MCF/DAY	987				
GAS-OIL RATIO CU FT/BBL	3,782				
WATER-BBL/DAY	326				
PUMPING OR FLOWING	ARTIFICIAL LIFT				
INITIAL SHUT-IN PRESSURE					
CHOKE SIZE					
FLOW TUBING PRESSURE	177				

AS SUBMITTED

A record of the formations drilled through, and pertinent remarks are presented on the reverse. I declare that I have knowledge of the contents of this report and am authorized by my organization to make this report which was prepared by me or under my supervision and direction, with the data and facts stated herein to be true, correct, and complete to the best of my knowledge and belief.

JP Powell, Regulatory Specialist 9/12/2017 405-848-8000
 SIGNATURE NAME (PRINT OR TYPE) DATE PHONE NUMBER
 P.O. BOX 18496 OKLAHOMA CITY OK 73154
 ADDRESS CITY STATE ZIP
 jp.powell@chk.com
 EMAIL ADDRESS

PLEASE TYPE OR USE BLACK INK ONLY
FORMATION RECORD

Give formation names and tops, if available, or descriptions and thickness of formations drilled through. Show intervals cored or drillstem tested.

LEASE NAME BRADFORD 5-18-5

WELL NO. 1H

NAMES OF FORMATIONS	TOP
OSWEGO	6,304

FOR COMMISSION USE ONLY

ITD on file YES NO

APPROVED _____ DISAPPROVED _____

2) Reject Codes

Were open hole logs run? _____ yes no

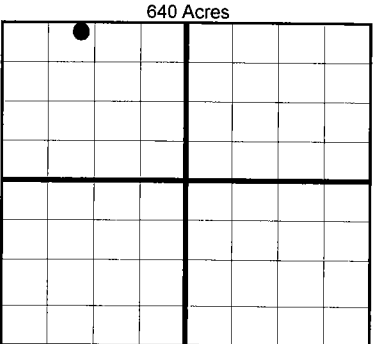
Date last log was run N/A

Was CO₂ encountered? _____ yes no at what depths?

Was H₂S encountered? _____ yes no at what depths?

Were unusual drilling circumstances encountered? _____ yes no
If yes, briefly explain.

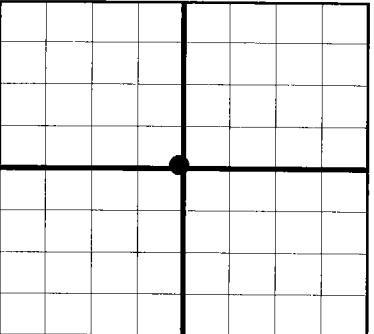
Other remarks:



If more than three drainholes are proposed, attach a separate sheet indicating the necessary information.

Direction must be stated in degrees azimuth. Please note, the horizontal drainhole and its end point must be located within the boundaries of the lease or spacing unit.

Directional surveys are required for all drainholes and directional wells.



BOTTOM HOLE LOCATION FOR DIRECTIONAL HOLE

SEC	TWP	RGE	COUNTY				
Spot Location	1/4	1/4	1/4	1/4	Feet From 1/4 Sec Lines	FSL	FWL
Measured Total Depth	True Vertical Depth		BHL From Lease, Unit, or Property Line:				

BOTTOM HOLE LOCATION FOR HORIZONTAL HOLE: (LATERALS)

LATERAL #1

SEC	TWP	RGE	COUNTY				
5	18N	5W	KINGFISHER				
Spot Location	NE 1/4	NE 1/4	NW 1/4	NW 1/4	Feet From 1/4 Sec Lines	FNL 180	FWL 1,300
Depth of Deviation	5,779	Radius of Turn	386	Direction	2	Total Length	5,033
Measured Total Depth	True Vertical Depth		BHL From Lease, Unit, or Property Line:				
11,337	6,165		180				

LATERAL #2

SEC	TWP	RGE	COUNTY				
Spot Location	1/4	1/4	1/4	1/4	Feet From 1/4 Sec Lines	FSL	FWL
Depth of Deviation	Radius of Turn		Direction		Total Length		
Measured Total Depth	True Vertical Depth		BHL From Lease, Unit, or Property Line:				

LATERAL #3

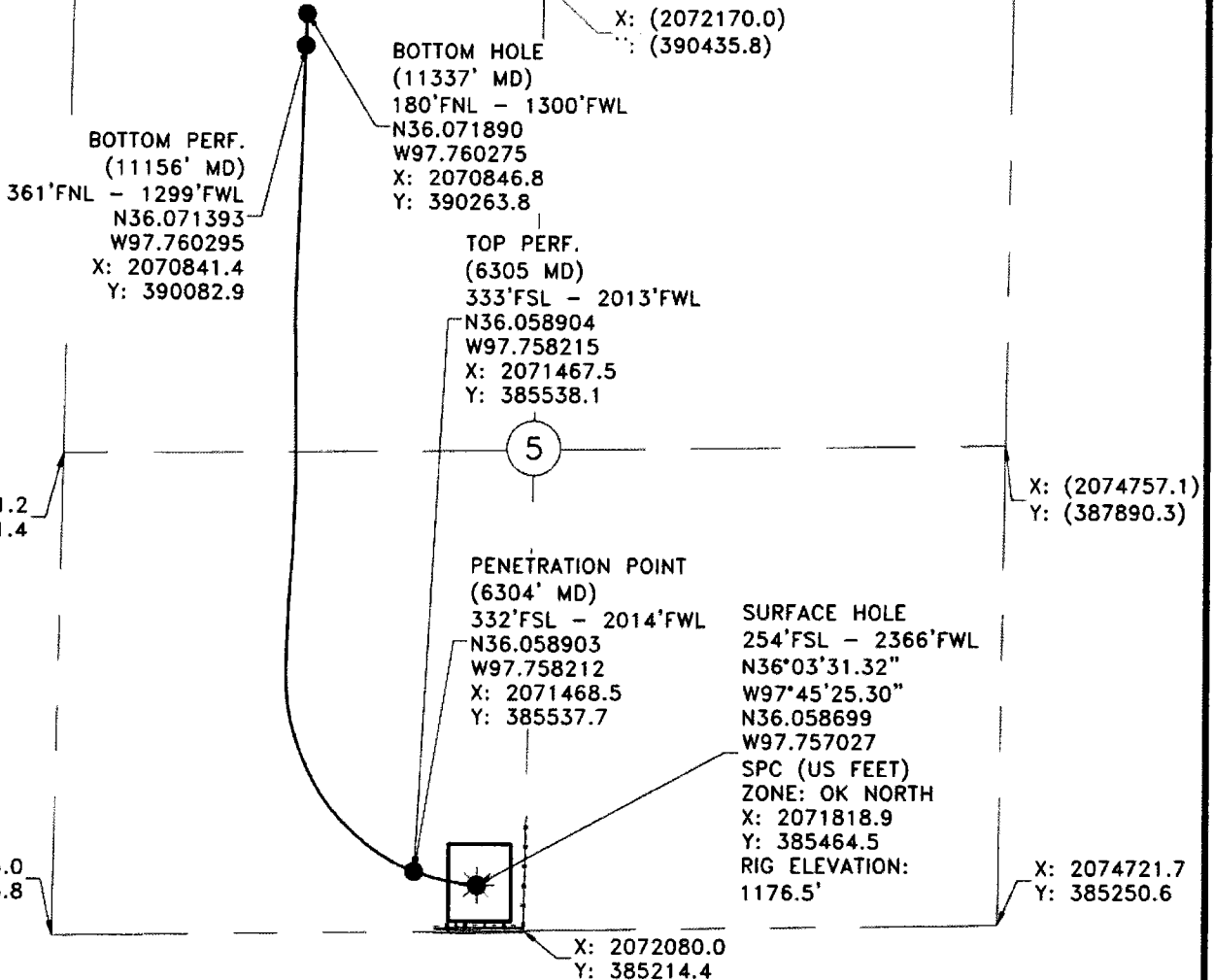
SEC	TWP	RGE	COUNTY				
Spot Location	1/4	1/4	1/4	1/4	Feet From 1/4 Sec Lines	FSL	FWL
Depth of Deviation	Radius of Turn		Direction		Total Length		
Measured Total Depth	True Vertical Depth		BHL From Lease, Unit, or Property Line:				

SECTION 5, T 18 N - R 5 W, I.M.,
KINGFISHER COUNTY, OKLAHOMA

X: 2069549.1
Y: 390451.8

X: 2074790.9
Y: 390419.8

BEARINGS ARE GRID
OKLAHOMA SPC. NAD 27, NORTH ZONE



Operator: CHESAPEAKE OPERATING, L.L.C. Date Staked: 11/03/16
 Lease Name: BRADFORD 5-18-5 Well No.: 1H GROUND Elevation: 1150'
 Topography and Vegetation: PASTURE
 Good Drill Site? YES Reference or Alt. Location Stakes Set: NONE
 Best Accessibility to Location: FROM COUNTY ROAD
 Distance and Direction from Hwy. Jct. or town: FROM HENNESSEY GO EAST ON CO. RD. E0660
7.4 MILES, THEN TURN NORTH INTO LOCATION.

Chesapeake
Operating, L.L.C.

Gateway Services Group, LLC
 P.O. BOX 960
 MEEKER, OK 74855
 OFF. (405) 273-0954
 FAX (405) 273-0580
 C.A. NO. 4091 (LS)
 EXP. DATE 6-30-2018

FINAL AS-DRILLED PLAT

All as-drilled information that is shown is based upon information and instructions furnished by Chesapeake Operating, L.L.C.

EXHIBIT "A" AS-DRILLED

BRADFORD 5-18-5 1H
 254'FSL - 2366'FWL
 SW/4 SECTION 5, T 18 N - R 5 W, I.M.,
 KINGFISHER COUNTY, OKLAHOMA

LEGEND

SURFACE LOCATION

EXISTING WELL BOTTOM HOLE/ABANDON POINT

PROPOSED DRILL PATH

EXISTING PIPELINE -PI-PI-PI-PI-PI-PI-

ELECTRIC LINE -E-E-E-E-E-E-

OVERHEAD POWER -OP-OP-OP-OP-OP-

FENCE -F-F-F-F-F-F-F-F-F-F-

DRAWN BY: TLM	DATE: 08/18/17	CHK'D: RLG	
GATEWAY NO.: 16-0655-203 AD	SCALE: 1"=1000'		
PAD PN#: 929379	WELL PN#: 658660		
REV.	DWN.	DESCRIPTION	DATE