

Oklahoma Corporation Commission
Oil & Gas Conservation Division
Post Office Box 52000
Oklahoma City, Oklahoma 73152-2000
Rule 165: 10-3-25

Form 1002A

API No.: 35003223390001

Completion Report

Spud Date: July 03, 2012

OTC Prod. Unit No.: 003-208728

Drilling Finished Date: July 26, 2012

1st Prod Date: September 10, 2012

Amended

Completion Date: August 27, 2012

Amend Reason: RECLASSIFY AS TEMPORARILY ABANDONED

Recomplete Date: August 23, 2017

Drill Type: HORIZONTAL HOLE

Well Name: C M SMITH 24-29-9 1H

Purchaser/Measurer:

Location: ALFALFA 24 29N 9W
NW NE NW
295 FNL 730 FWL of 1/4 SEC
Derrick Elevation: 1305 Ground Elevation: 1287

First Sales Date:

Operator: CHESAPEAKE OPERATING LLC 17441
PO BOX 18496
6100 N WESTERN AVE
OKLAHOMA CITY, OK 73154-0496

Completion Type	
X	Single Zone
	Multiple Zone
	Commingled

Location Exception	
Order No	
604824	

Increased Density	
Order No	
There are no Increased Density records to display.	

Casing and Cement							
Type	Size	Weight	Grade	Feet	PSI	SAX	Top of CMT
SURFACE	9 5/8	36	J-55	1215		495	SURFACE
PRODUCTION	7	26	P-110EC	5088		230	2384

Liner								
Type	Size	Weight	Grade	Length	PSI	SAX	Top Depth	Bottom Depth
LINER	4 1/2	13.5	P-110EC	5240	0	510	4420	9660

Total Depth: 9660

Packer	
Depth	Brand & Type
4408	A-3

Plug	
Depth	Plug Type
9573	PBTD

Initial Test Data										
Test Date	Formation	Oil BBL/Day	Oil-Gravity (API)	Gas MCF/Day	Gas-Oil Ratio Cu FT/BBL	Water BBL/Day	Pumpin or Flowing	Initial Shut-In Pressure	Choke Size	Flow Tubing Pressure
Jun 29, 2015	MISSISSIPPIAN	23								

Completion and Test Data by Producing Formation

Formation Name: MISSISSIPPIAN

Code: 359MSSP

Class: TA

Spacing Orders

Order No	Unit Size
598532	640

Perforated Intervals

From	To
4981	9514

Acid Volumes

There are no Acid Volume records to display.

Fracture Treatments

There are no Fracture Treatments records to display.

Formation	Top
MISSISSIPPIAN	4956

Were open hole logs run? No

Date last log run:

Were unusual drilling circumstances encountered? No

Explanation:

Other Remarks

There are no Other Remarks.

Lateral Holes

Sec: 24 TWP: 29N RGE: 9W County: ALFALFA

SE SW SW SW

66 FSL 646 FWL of 1/4 SEC

Depth of Deviation: 4541 Radius of Turn: 416 Direction: 182 Total Length: 4704

Measured Total Depth: 9660 True Vertical Depth: 4957 End Pt. Location From Release, Unit or Property Line: 66

FOR COMMISSION USE ONLY

1137490

Status: Accepted

API NO. 35-003-22339
 OTC PROD.
 UNIT NO. 003-208728

PLEASE TYPE OR USE BLACK INK ONLY
 NOTE: Attach copy of original 1002A if recompletion or reentry.

OKLAHOMA CORPORATION COMMISSION
 Oil & Gas Conservation Division
 Post Office Box 52000
 Oklahoma City, Oklahoma 73152-2000
 Rule 165:10-3-25

RECEIVED

Form 1002
 Rev. 2009

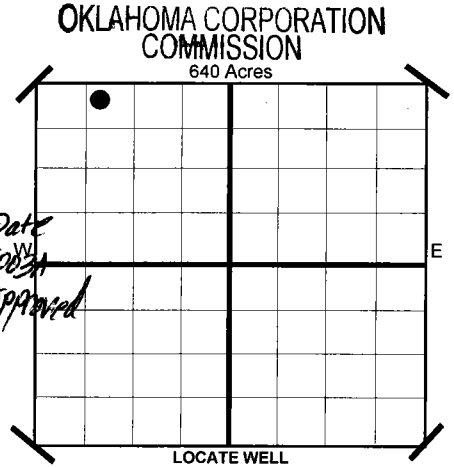
AUG 23 2017

ORIGINAL
 AMENDED
 Reason Amended **Reclassify as Temporarily Abandoned**

COMPLETION REPORT

TYPE OF DRILLING OPERATION
 STRAIGHT HOLE DIRECTIONAL HOLE HORIZONTAL HOLE
 SERVICE WELL
 If directional or horizontal, see reverse for bottom hole location.

SPUD DATE 7/3/2012
 DRLG FINISHED DATE 7/26/2012
 DATE OF WELL COMPLETION 8/27/2012
 1ST PROD DATE 9/10/2012
 RECOMP DATE **8-23-2017**
 Longitude (if Known)
 OTC/OCC OPERATOR NO. 17441



COUNTY ALFALFA SEC 24 TWP 29N RGE 9W
 LEASE NAME CM SMITH 24-29-9
 SHL NW 1/4 NE 1/4 NW 1/4 NW 1/4
 ELEVATION 295
 Derrick Fl 1,305 Ground 1,287
 OPERATOR NAME CHESAPEAKE OPERATING, INC.
 ADDRESS P.O. BOX 18496
 CITY OKLAHOMA CITY STATE OK ZIP 73154

COMPLETION TYPE
 SINGLE ZONE
 MULTIPLE ZONE
 Application Date
 COMMINGLED
 Application Date
 LOCATION EXCEPTION ORDER NO. **604824 F.O.**
508831 (interim)
 INCREASED DENSITY ORDER NO. N/A

CASING & CEMENT (Form 1002C must be attached)

TYPE	SIZE	WEIGHT	GRADE	FEET	PSI	SAX	TOP	
CONDUCTOR								
SURFACE	9-5/8"	36#	J-55	1,215		495	Surface	
INTERMEDIATE	7"	26#	P-110EC	5,088		230	2,384	
PRODUCTION								
LINER	4-1/2"	13.5#	P-110EC	4,420-9,660		510	4,420	
							TOTAL DEPTH	9,660

PACKER @ 4,408 BRAND & TYPE A-3
 PLUG @ 9,573 TYPE PBSD
 PLUG @ TYPE
 PLUG @ TYPE

COMPLETION & TEST DATA BY PRODUCING FORMATION

359MSSP

FORMATION	SPACING & SPACING ORDER NUMBER	CLASS: Oil, Gas, Dry, Inj. Disp, Comm Disp, Svc	PERFORATED INTERVALS	ACID/VOLUME	FRACTURE TREATMENT (Fluids/Prop Amounts)
MISSISSIPPIAN	640 598532	Temporarily Abandoned	4,981-9,514		

Minimum Gas Allowable (165:10-17-7) OR Gas Purchaser/Measurer
 Oil Allowable (165:10-13-3) 1st Sales Date

INITIAL TEST DATA

INITIAL TEST DATE	6/29/2015
OIL-BBL/DAY	23
OIL-GRAVITY (API)	
GAS-MCF/DAY	0
GAS-OIL RATIO CU FT/BBL	
WATER-BBL/DAY	0
PUMPING OR FLOWING	
INITIAL SHUT-IN PRESSURE	
CHOKE SIZE	
FLOW TUBING PRESSURE	

AS SUBMITTED

A record of the formations drilled through, and pertinent remarks are presented on the reverse. I declare that I have knowledge of the contents of this report and am authorized by my organization to make this report, which was prepared by me or under my supervision and direction, with the data and facts stated herein to be true, correct, and complete to the best of my knowledge and belief.

Sara Everett
 SIGNATURE Sara Everett, Regulatory Analyst 8/22/2017 405-848-8000
 P.O. BOX 18496 OKLAHOMA CITY OK 73154 sara.everett@chk.com
 ADDRESS CITY STATE ZIP EMAIL ADDRESS

PLEASE TYPE OR USE BLACK INK ONLY
FORMATION RECORD

Give formation names and tops, if available, or descriptions and thickness of formations drilled through. Show intervals cored or drillstem tested.

LEASE NAME CM SMITH 24-29-9

WELL NO. 1H

NAMES OF FORMATIONS	TOP
MISSISSIPPIAN	4,956

FOR COMMISSION USE ONLY

ITD on file YES NO

APPROVED _____ DISAPPROVED _____

2) Reject Codes _____

Were open hole logs run? yes no

Date last log was run N/A

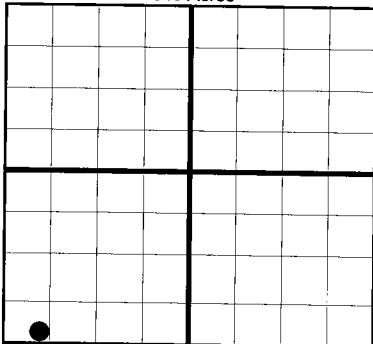
Was CO₂ encountered? yes no at what depths?

Was H₂S encountered? yes no at what depths?

Were unusual drilling circumstances encountered? yes no
If yes, briefly explain.

Other remarks:

640 Acres

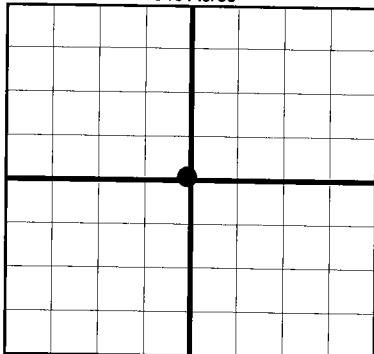


If more than three drainholes are proposed, attach a separate sheet indicating the necessary information.

Direction must be stated in degrees azimuth. Please note, the horizontal drainhole and its end point must be located within the boundaries of the lease or spacing unit.

Directional surveys are required for all drainholes and directional wells.

640 Acres



BOTTOM HOLE LOCATION FOR DIRECTIONAL HOLE

SEC	TWP	RGE	COUNTY				
Spot Location	1/4	1/4	1/4	1/4	Feet From 1/4 Sec Lines	FSL	FWL
Measured Total Depth	True Vertical Depth		BHL From Lease, Unit, or Property Line:				

BOTTOM HOLE LOCATION FOR HORIZONTAL HOLE: (LATERALS)

SEC	TWP	RGE	COUNTY						
24	29N	9W	ALFALFA						
Spot Location	SE 1/4	SW 1/4	SW 1/4	SW 1/4	Feet From 1/4 Sec Lines	FSL	66	FWL	646
Depth of Deviation	4,541		Radius of Turn	416	Direction	182	Total Length	4,704	
Measured Total Depth	9,660		True Vertical Depth		4,957		BHL From Lease, Unit, or Property Line:		
							66		

LATERAL #2

SEC	TWP	RGE	COUNTY				
Spot Location	1/4	1/4	1/4	1/4	Feet From 1/4 Sec Lines	FSL	FWL
Depth of Deviation	Radius of Turn		Direction		Total Length		
Measured Total Depth	True Vertical Depth		BHL From Lease, Unit, or Property Line:				

LATERAL #3

SEC	TWP	RGE	COUNTY				
Spot Location	1/4	1/4	1/4	1/4	Feet From 1/4 Sec Lines	FSL	FWL
Depth of Deviation	Radius of Turn		Direction		Total Length		
Measured Total Depth	True Vertical Depth		BHL From Lease, Unit, or Property Line:				