

Oklahoma Corporation Commission
Oil & Gas Conservation Division
Post Office Box 52000
Oklahoma City, Oklahoma 73152-2000
Rule 165: 10-3-25

Form 1002A

API No.: 35151235720002

Completion Report

Spud Date: December 15, 2011

OTC Prod. Unit No.: 151-207571

Drilling Finished Date: January 06, 2012

Amended

1st Prod Date: March 21, 2012

Amend Reason: RECLASSIFY AS TEMPORARILY ABANDONED

Completion Date: February 10, 2012

Recomplete Date: August 23, 2017

Drill Type: HORIZONTAL HOLE

Well Name: FREI FAMILY TRUST 6-27-18 1H

Purchaser/Measurer:

Location: WOODS 6 27N 18W
N2 N2 NE NE
200 FNL 660 FEL of 1/4 SEC
Derrick Elevation: 1757 Ground Elevation: 1741

First Sales Date:

Operator: CHESAPEAKE OPERATING LLC 17441
PO BOX 18496
6100 N WESTERN AVE
OKLAHOMA CITY, OK 73154-0496

Completion Type	
X	Single Zone
	Multiple Zone
	Commingled

Location Exception	
Order No	
597541	

Increased Density	
Order No	
There are no Increased Density records to display.	

Casing and Cement							
Type	Size	Weight	Grade	Feet	PSI	SAX	Top of CMT
CONDUCTOR	13 3/8	48	J-55	541		470	SURFACE
SURFACE	9 5/8	36	J-55	1243		365	SURFACE
PRODUCTION	7	26	P-110EC	5935		215	4134

Liner								
Type	Size	Weight	Grade	Length	PSI	SAX	Top Depth	Bottom Depth
LINER	4 1/2	13.5	P-110EC	5406	0	530	5107	10513

Total Depth: 10515

Packer	
Depth	Brand & Type
5054	PV-3

Plug	
Depth	Plug Type
10417	PBTD

Initial Test Data

Test Date	Formation	Oil BBL/Day	Oil-Gravity (API)	Gas MCF/Day	Gas-Oil Ratio Cu FT/BBL	Water BBL/Day	Pumpin or Flowing	Initial Shut-In Pressure	Choke Size	Flow Tubing Pressure
Jun 23, 2015	MISSISSIPPIAN	67								

Completion and Test Data by Producing Formation

Formation Name: MISSISSIPPIAN

Code: 359MSSP

Class: TA

Spacing Orders

Order No	Unit Size
591822	640

Perforated Intervals

From	To
5637	10361

Acid Volumes

There are no Acid Volume records to display.

Fracture Treatments

There are no Fracture Treatments records to display.

Formation	Top
MISSISSIPPIAN	5620

Were open hole logs run? Yes

Date last log run: January 04, 2012

Were unusual drilling circumstances encountered? No

Explanation:

Other Remarks

There are no Other Remarks.

Lateral Holes

Sec: 6 TWP: 27N RGE: 18W County: WOODS

SW SE SE SE

67 FSL 643 FEL of 1/4 SEC

Depth of Deviation: 5301 Radius of Turn: 370 Direction: 179 Total Length: 4895

Measured Total Depth: 10515 True Vertical Depth: 5671 End Pt. Location From Release, Unit or Property Line: 67

FOR COMMISSION USE ONLY

1137488

Status: Accepted

API NO. 151-23572
 OTC PROD.
 UNIT NO. 151-207571

PLEASE TYPE OR USE BLACK INK ONLY
 NOTE: Attach copy of original 1002A if recompletion or reentry.

OKLAHOMA CORPORATION COMMISSION
 Oil & Gas Conservation Division
 Post Office Box 52000
 Oklahoma City, Oklahoma 73152-2000
 Rule 165-10-3-25

RECEIVED

Form 1002A
 Rev. 2009

AUG 23 2017

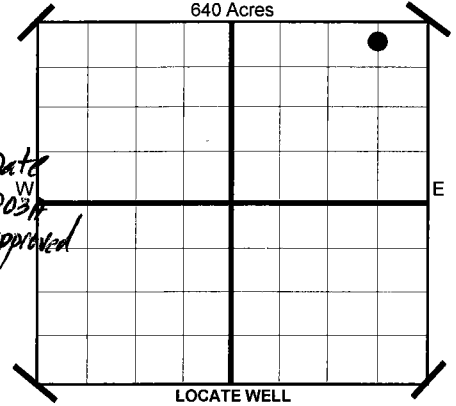
OKLAHOMA CORPORATION COMMISSION

ORIGINAL
 AMENDED
 Reason Amended **Reclassify as temporarily abandoned**

COMPLETION REPORT

TYPE OF DRILLING OPERATION
 STRAIGHT HOLE SERVICE WELL
 DIRECTIONAL HOLE
 HORIZONTAL HOLE

SPUD DATE 12/15/2011
 DRLG FINISHED DATE 1/6/2012
 DATE OF WELL COMPLETION 2/10/2012
 1ST PROD DATE 3/21/2012
 RECOMP DATE 8-23-2017
 Longitude (if Known)
 OTC/OCC OPERATOR NO. 17441



If directional or horizontal, see reverse for bottom hole location.

COUNTY Woods SEC 6 TWP 27N RGE 18W
 LEASE NAME Frei Family Trust 6-27-18
 SHL N2 1/4 N2 1/4 NE 1/4 NE 1/4
 ELEVATION Derrick Fl 1,757 Ground 1,741
 OPERATOR NAME CHESAPEAKE OPERATING, INC.
 ADDRESS P.O. BOX 18496
 CITY OKLAHOMA CITY STATE OK ZIP 73154

COMPLETION TYPE

SINGLE ZONE
 MULTIPLE ZONE
 COMMINGLED
 LOCATION EXCEPTION ORDER NO. 597541
 INCREASED DENSITY ORDER NO. N/A

CASING & CEMENT (Form 1002C must be attached)

TYPE	SIZE	WEIGHT	GRADE	FEET	PSI	SAX	TOP
CONDUCTOR	13-3/8"	48#	J-55	541		470	Surface
SURFACE	9-5/8"	36#	J-55	1,243		365	Surface
INTERMEDIATE	7"	26#	P-110EC	5,935		215	4,134
PRODUCTION							
LINER	4-1/2"	13.5#	P-110EC	5,107-10,513		530	5,144

PACKER @ 5.054 BRAND & TYPE PV-3 PLUG @ TYPE PLUG @ 10.417 TYPE PBDT TOTAL DEPTH 10,515

COMPLETION & TEST DATA BY PRODUCING FORMATION

FORMATION	SPACING & SPACING ORDER NUMBER	CLASS: Oil, Gas, Dry, Inj. Disp, Comm Disp, Svc	PERFORATED INTERVALS	ACID/VOLUME	FRACTURE TREATMENT (Fluids/Prop Amounts)
Mississippian	640 591822	Temporarily Abandoned	5,637 - 10,361		

Minimum Gas Allowable (165:10-17-7) Gas Purchaser/Measurer
 OR
 Oil Allowable (165:10-13-3) 1st Sales Date

INITIAL TEST DATA

INITIAL TEST DATE	6/23/2015
OIL-BBL/DAY	67
OIL-GRAVITY (API)	
GAS-MCF/DAY	0
GAS-OIL RATIO CU FT/BBL	
WATER-BBL/DAY	0
PUMPING OR FLOWING	
INITIAL SHUT-IN PRESSURE	
CHOKE SIZE	
FLOW TUBING PRESSURE	

AS SUBMITTED

A record of the formations drilled through, and pertinent remarks are presented on the reverse. I declare that I have knowledge of the contents of this report and am authorized by my organization to make this report, which was prepared by me or under my supervision and direction, with the data and facts stated herein to be true, correct, and complete to the best of my knowledge and belief.

Sara Everett
 SIGNATURE NAME (PRINT OR TYPE) Sara Everett
 P.O. BOX 18496 OKLAHOMA CITY OK 73154
 ADDRESS CITY STATE ZIP
 8/22/2017 DATE
 405-848-8000 PHONE NUMBER
 sara.everett@chk.com EMAIL ADDRESS

PLEASE TYPE OR USE BLACK INK ONLY
FORMATION RECORD

Give formation names and tops, if available, or descriptions and thickness of formations drilled through. Show intervals cored or drillstem tested.

LEASE NAME Frei Family Trust 6-27-18

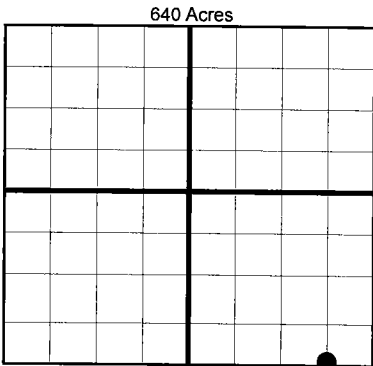
WELL NO. 1H

NAMES OF FORMATIONS	TOP
Mississippian	5,620

FOR COMMISSION USE ONLY	
ITD on file	<input type="checkbox"/> YES <input type="checkbox"/> NO
APPROVED	DISAPPROVED
2) Reject Codes	

Were open hole logs run?	<input checked="" type="checkbox"/> yes	<input type="checkbox"/> no
Date Last log was run	1/4/2012	
Was CO ₂ encountered?	<input type="checkbox"/> yes	<input checked="" type="checkbox"/> no at what depths?
Was H ₂ S encountered?	<input type="checkbox"/> yes	<input checked="" type="checkbox"/> no at what depths?
Were unusual drilling circumstances encountered?	<input type="checkbox"/> yes	<input checked="" type="checkbox"/> no
If yes, briefly explain.		

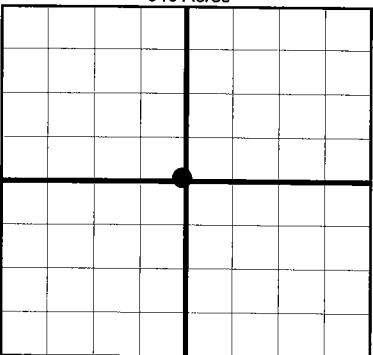
Other remarks:



If more than three drainholes are proposed, attach a separate sheet indicating the necessary information.

Direction must be stated in degrees azimuth. Please note, the horizontal drainhole and its end point must be located within the boundaries of the lease or spacing unit.

Directional surveys are required for all drainholes and directional wells.



BOTTOM HOLE LOCATION FOR DIRECTIONAL HOLE

SEC	TWP	RGE	COUNTY
Spot Location			
1/4	1/4	1/4	1/4
Measured Total Depth		True Vertical Depth	Feet From 1/4 Sec Lines FSL FWL
BHL From Lease, Unit, or Property Line:			

BOTTOM HOLE LOCATION FOR HORIZONTAL HOLE: (LATERALS)

SEC	TWP	RGE	COUNTY
6	27N	18W	Woods
Spot Location			
SW 1/4	SE 1/4	SE 1/4	SE 1/4
Depth of Deviation		Radius of Turn	Direction
5,301		370	179
Measured Total Depth		True Vertical Depth	Total Length
10,515		5,671	4,895
BHL From Lease, Unit, or Property Line:			
67			

LATERAL #2

SEC	TWP	RGE	COUNTY
Spot Location			
1/4	1/4	1/4	1/4
Depth of Deviation		Radius of Turn	Direction
Measured Total Depth		True Vertical Depth	Total Length
BHL From Lease, Unit, or Property Line:			

LATERAL #3

SEC	TWP	RGE	COUNTY
Spot Location			
1/4	1/4	1/4	1/4
Depth of Deviation		Radius of Turn	Direction
Measured Total Depth		True Vertical Depth	Total Length
BHL From Lease, Unit, or Property Line:			