

Oklahoma Corporation Commission  
Oil & Gas Conservation Division  
Post Office Box 52000  
Oklahoma City, Oklahoma 73152-2000  
Rule 165: 10-3-25

Form 1002A

API No.: 35133248590002

**Completion Report**

Spud Date: April 28, 2010

OTC Prod. Unit No.:

Drilling Finished Date: June 02, 2010

**Amended**

1st Prod Date:

Amend Reason: PLUG BACK

Completion Date: June 07, 2010

Recomplete Date: May 09, 2017

**Drill Type: HORIZONTAL HOLE**

**SERVICE WELL**

Well Name: TRIXIE 1-3 SWD

Purchaser/Measurer:

Location: SEMINOLE 3 10N 7E  
NE NW NW NW  
225 FNL 595 FWL of 1/4 SEC  
Derrick Elevation: 930 Ground Elevation: 920

First Sales Date:

Operator: NEW DOMINION LLC 20585

1307 S BOULDER AVE STE 400  
TULSA, OK 74119-3220

Completion Type		Location Exception		Increased Density	
X	Single Zone	Order No		Order No	
	Multiple Zone	There are no Location Exception records to display.		There are no Increased Density records to display.	
	Commingled				

Casing and Cement							
Type	Size	Weight	Grade	Feet	PSI	SAX	Top of CMT
SURFACE	13 3/8	54.5	J-55 ST & C	993	500	800	SURFACE
PRODUCTION	9 5/8	43.5	N-80 LT & C	5460	1000	1250	3300

Liner								
Type	Size	Weight	Grade	Length	PSI	SAX	Top Depth	Bottom Depth
There are no Liner records to display.								

**Total Depth: 8033**

Packer		Plug	
Depth	Brand & Type	Depth	Plug Type
4532	IPC COMP	5578	CONCRETE

Initial Test Data
-------------------

Test Date	Formation	Oil BBL/Day	Oil-Gravity (API)	Gas MCF/Day	Gas-Oil Ratio Cu FT/BBL	Water BBL/Day	Pumpin or Flowing	Initial Shut- In Pressure	Choke Size	Flow Tubing Pressure
-----------	-----------	----------------	----------------------	----------------	----------------------------	------------------	----------------------	---------------------------------	---------------	-------------------------

There are no Initial Data records to display.

### Completion and Test Data by Producing Formation

Formation Name: ARBUCKLE

Code: 169ABCK

Class: DISP

Formation	Top
ARBUCKLE	5010

Were open hole logs run? No

Date last log run:

Were unusual drilling circumstances encountered? No

Explanation:

### Other Remarks

DV TOOL @ 3,749'. PERMIT NUMBER 1007610013. PLUG BACK OF THE TRIXIE 1-3 SWD PER OCC LETTER DATED MAY 18, 2015, ENCOUNTERED FILL @ 5,665'. EMAILED JIM MARLATT ON APRIL 28, 2015 REQUESTING OCC APPROVAL FOR A 25' CONCRETE PLUG DUE TO FILL. JIM MARLATT APPROVED THE USE OF A 25' CONCRETE PLUG ON MAY 1, 2017. TAGGING TOP OF CONCRETE PLUG AT 5,578' WAS WITNESSED AND APPROVED BY OCC INSPECTOR RICH CARLSON ON MAY 9, 2017. RESUMED DISPOSAL ON MAY 20, 2017. OCC - A DV TOOL WAS SET AT 3,749' SEE 1002C FOR 9 5/8" CASING. THIS WELL IS AN OPEN HOLE COMPLETION FROM BOTTOM OF 9 5/8" CASING AT 5,460' TO TOP OF CEMENT PLUG AT 5,578'.

### Lateral Holes

Sec: 3 TWP: 10N RGE: 7E County: SEMINOLE

NE NE NE NW

223 FNL 2349 FWL of 1/4 SEC

Depth of Deviation: 5463 Radius of Turn: 348 Direction: 89 Total Length: 1408

Measured Total Depth: 8033 True Vertical Depth: 7287 End Pt. Location From Release, Unit or Property Line: 223

Sec: 3 TWP: 10N RGE: 7E County: SEMINOLE

NW SE NE NW

756 FNL 2156 FWL of 1/4 SEC

Depth of Deviation: 5463 Radius of Turn: 348 Direction: 116 Total Length: 1300

Measured Total Depth: 7908 True Vertical Depth: 7198 End Pt. Location From Release, Unit or Property Line: 756

Sec: 34 TWP: 11N RGE: 7E County: SEMINOLE

SW SE SE SW

307 FSL 2120 FWL of 1/4 SEC

Depth of Deviation: 5463 Radius of Turn: 348 Direction: 59 Total Length: 1266

Measured Total Depth: 7881 True Vertical Depth: 7152 End Pt. Location From Release, Unit or Property Line: 307

Status: Accepted

API NO. 133-24859  
OTC PROD.  
UNIT NO.

PLEASE TYPE OR USE BLACK INK ONLY  
NOTE:

Attach copy of original 1002A  
if recompletion or reentry.

OKLAHOMA CORPORATION COMMISSION  
Oil & Gas Conservation Division  
Post Office Box 52000  
Oklahoma City, Oklahoma 73152-2000  
Rule 165:10-3-25

RECEIVED

MAY 24 2017

OKLAHOMA CORPORATION  
COMMISSION

640 Acres

☐ ORIGINAL  
☒ AMENDED (Reason)

Plug Back

COMPLETION REPORT

TYPE OF DRILLING OPERATION

☐ STRAIGHT HOLE ☐ DIRECTIONAL HOLE ☒ HORIZONTAL HOLE  
☒ SERVICE WELL

If directional or horizontal, see reverse for bottom hole location.

COUNTY	Seminole	SEC	3	TWP	10N	RGE	7E	SPUD DATE	4/28/2010
LEASE NAME	Trixie SW 1/4			WELL NO.	#1-3	DATE OF WELL COMPLETION	6/7/2010	DRLG FINISHED DATE	6/2/2010
NE 1/4 NW 1/4 NW 1/4 NW 1/4	225'	FWL OF 1/4 SEC	595'	RECOMP DATE	5/9/2017	N/A			
ELEVATION Derrick FL	930'	Ground	920'	Latitude (if known)	Longitude (if known)				
OPERATOR NAME	New Dominion, LLC			OTC/OCC OPERATOR NO.	20585				
ADDRESS	1307 South Boulder, Suite 400								
CITY	Tulsa	STATE	Ok.	ZIP	74119				

X									

LOCATE WELL

COMPLETION TYPE

<input checked="" type="checkbox"/> SINGLE ZONE
<input type="checkbox"/> MULTIPLE ZONE
Application Date
COMMINGLED
Application Date
LOCATION
EXCEPTION ORDER
INCREASED DENSITY
ORDER NO.

CASING & CEMENT (Form 1002C must be attached)

TYPE	SIZE	WEIGHT	GRADE	FEET	PSI	SAX	TOP OF CMT
CONDUCTOR							
SURFACE	13-3/8"	54.5#	J-55 ST&C	993'	500	800	Cir. To Surf.
INTERMEDIATE							
PRODUCTION	9-5/8"	43.5#	N-80 LT&C	5,460'	1,000	1250	3,300'
LINER							

PACKER @ 4,532 BRAND & TYPE IPC Comp. PLUG @ 5,578' TYPE Concrete PLUG @ TYPE TOTAL DEPTH 8,033  
PACKER @ BRAND & TYPE PLUG @ TYPE PLUG @ TYPE

COMPLETION & TEST DATA BY PRODUCING FORMATION

FORMATION	Arbuckle
SPACING & SPACING ORDER NUMBER	N/A
CLASS: Oil, Gas, Dry, Inj, Disp, Comm Disp, Svc	Disposal
Disposal	see remarks
PERFORATED INTERVALS	Open Hole
ACID/VOLUME	
FRACTURE TREATMENT (Fluids/Prop Amounts)	

Min Gas Allowable (165:10-17-7)

Gas Purchaser/Measurer

☐

OR

First Sales Date

Oil Allowable (165:10-13-3)

INITIAL TEST DATA

INITIAL TEST DATE	N/A
OIL-BBL/DAY	N/A
OIL-GRAVITY ( API)	N/A
GAS-MCF/DAY	N/A
GAS-OIL RATIO CU FT/BBL	N/A
WATER-BBL/DAY	N/A
PUMPING OR FLOWING	N/A
INITIAL SHUT-IN PRESSURE	N/A
CHOKE SIZE	N/A
FLOW TUBING PRESSURE	N/A

AS SUBMITTED

A record of the formations drilled through, and pertinent remarks are presented on the reverse. I declare that I have knowledge of the contents of this report and am authorized by my organization to make this report, which was prepared by me or under my supervision and direction, with the data and facts stated herein to be true, correct, and complete to the best of my knowledge and belief.

Jerry Breaux

5/15/2017

918-587-6242

SIGNATURE

NAME (PRINT OR TYPE)

DATE

PHONE NUMBER

1307 South Boulder, Suite 400

Tulsa

ok

74119

jerry.breaux@newdominion.net

ADDRESS

CITY

STATE

ZIP

EMAIL ADDRESS

## PLEASE TYPE OR USE BLACK INK ONLY

## FORMATION RECORD

Give formation names and tops, if available, or descriptions and thickness of formations drilled through. Show intervals cored or drillstem tested.

LEASE NAME \_\_\_\_\_

WELL NO. \_\_\_\_\_

NAMES OF FORMATIONS	TOP
Arbuckle	5,010'

FOR COMMISSION USE ONLY	
ITD on file <input type="checkbox"/> YES <input type="checkbox"/> NO	
APPROVED _____	DISAPPROVED _____
2) Reject Codes	
_____	
_____	
_____	
_____	

Were open hole logs run?	_____ yes _____ no
Date Last log was run	_____
Was CO <sub>2</sub> encountered?	_____ yes _____ no at what depths? _____
Was H <sub>2</sub> S encountered?	_____ yes _____ no at what depths? _____
Were unusual drilling circumstances encountered?	_____ yes _____ no
If yes, briefly explain below	

Other remarks: DV Tool @ 3,749', Permit No. 1007610013

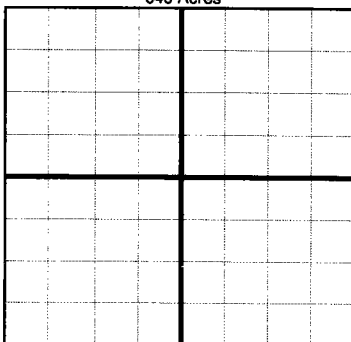
Plug Back of the Trixie #1-3 SWD per OCC Letter dated 5/18/2015, Encountered Fill @ 5,665', Emailed Jim Marlatt on 4/28/2015 requesting OCC Approval for a 25' Concrete Plug due to Fill, Jim Marlatt approved the use of a 25' Concrete Plug on 5/1/2017.

Tagging Top of Concrete Plug at 5,578' was Witnessed and Approved by OCC Inspector Rich Carlson on 5/9/2017

Resumed Disposal on 5/20/2017

*OCC - A DV tool was set at 3749' see 1002C for 9 5/8" casing.*  
*OCC - This well is an open hole completion from bottom of 9 5/8" casing at 5460' to top of Cement Plug at 5578'*

640 Acres



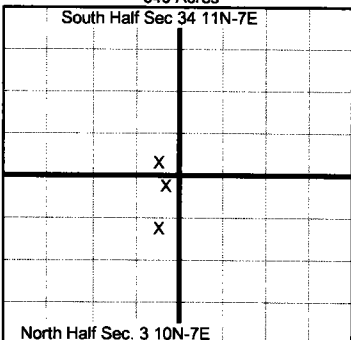
If more than three drainholes are proposed, attach a separate sheet indicating the necessary information.

Direction must be stated in degrees azimuth.  
 Please note, the horizontal drainhole and its end point must be located within the boundaries of the lease or spacing unit.

Directional surveys are required for all drainholes and directional wells.

640 Acres

South Half Sec 34 11N-7E



North Half Sec. 3 10N-7E

## BOTTOM HOLE LOCATION FOR DIRECTIONAL HOLE

SEC	TWP	RGE	COUNTY			
Spot Location				Feet From 1/4 Sec Lines	FSL	FEL
1/4	1/4	1/4	1/4			
Measured Total Depth		True Vertical Depth		BHL From Lease, Unit, or Property Line:		

## BOTTOM HOLE LOCATION FOR HORIZONTAL HOLE: (LATERALS)

## LATERAL #1

SEC	3	TWP	10N	RGE	07E	COUNTY	Seminole					
Spot Location							Feet From 1/4 Sec Lines		FNL	223'	FWL	2,349'
NE		1/4	NE		1/4	NW		1/4				
Depth of Deviation		5,463'			Radius of Turn		348'		Direction	89	Total Length	1,408'
Measured Total Depth				True Vertical Depth			BHL From Lease, Unit, or Property Line:					
8,033'				7,287			223'					

## LATERAL #2

SEC	3	TWP	10N	RGE	07E	COUNTY	Seminole						
Spot Location							Feet From 1/4 Sec Lines			FNL	756'	FWL	2,156'
NW	1/4	SE	1/4	NE	1/4	NW	1/4						
Depth of Deviation				5,463'		Radius of Turn		348'		Direction	116	Total Length	1,300'
Measured Total Depth				7,908'		True Vertical Depth		7,198'		BHL From Lease, Unit, or Property Line:			
										756'			

## LATERAL #3

SEC	34	TWP	11N	RGE	07E	COUNTY	Seminole					
Spot Location							Feet From 1/4 Sec Lines		FSL	307'	FWL	2,120'
SW	1/4	SE	1/4	SE	1/4	SW	1/4					
Depth of Deviation		5,463'		Radius of Turn		348'		Direction	59	Total Length	1,266'	
Measured Total Depth				True Vertical Depth			BHL From Lease, Unit, or Property Line:					
7,881'				7,152'			307'					