

Oklahoma Corporation Commission
Oil & Gas Conservation Division
Post Office Box 52000
Oklahoma City, Oklahoma 73152-2000
Rule 165: 10-3-25

Form 1002A

API No.: 35153235990000

Completion Report

Spud Date: January 09, 2017

OTC Prod. Unit No.: 153-218573

Drilling Finished Date: February 13, 2017

1st Prod Date: April 03, 2017

Completion Date: March 15, 2017

Drill Type: HORIZONTAL HOLE

Well Name: ROSSER 16-1H

Purchaser/Measurer: RED CLIFF MIDSTREAM

Location: WOODWARD 9 20N 18W
SE SE SW SE
300 FSL 1004 FWL of 1/4 SEC
Derrick Elevation: 1868 Ground Elevation: 1850

First Sales Date: 03/23/2017

Operator: CORLENA OIL COMPANY 23706

619 S TYLER ST STE 210
AMARILLO, TX 79101-2303

Completion Type	
X	Single Zone
	Multiple Zone
	Commingled

Location Exception
Order No
662896

Increased Density
Order No
There are no Increased Density records to display.

Casing and Cement							
Type	Size	Weight	Grade	Feet	PSI	SAX	Top of CMT
CONDUCTOR	20	94	H-40	85			SURFACE
SURFACE	9 5/8	36	J-55	1475	400	562	SURFACE
INTERMEDIATE	7	26	P-110	10270	3100	621	3000
PRODUCTION	5 1/2 / 4 1/2	20 / 13.5	P-110	15297	1050	606	9408

Liner								
Type	Size	Weight	Grade	Length	PSI	SAX	Top Depth	Bottom Depth
There are no Liner records to display.								

Total Depth: 15300

Packer	
Depth	Brand & Type
9408	BAKER S-3 HYD

Plug	
Depth	Plug Type
There are no Plug records to display.	

Initial Test Data

Test Date	Formation	Oil BBL/Day	Oil-Gravity (API)	Gas MCF/Day	Gas-Oil Ratio Cu FT/BBL	Water BBL/Day	Pumpin or Flowing	Initial Shut-In Pressure	Choke Size	Flow Tubing Pressure
Apr 27, 2017	MISS'AN (EX CHESTER)	50	49	2366	47320	1395	FLOWING	510	46/64	510

Completion and Test Data by Producing Formation

Formation Name: MISS'AN (EX CHESTER)

Code: 359MSNLC

Class: GAS

Spacing Orders

Order No	Unit Size
658733	640

Perforated Intervals

From	To
10442	15293

Acid Volumes

2,176 BARRELS 15% HCL

Fracture Treatments

13.2MM SAND, 280,000 BARRELS HYBRID

Formation	Top
MISSISSIPPIAN LIME	8888
ST GENEVIEVE	10186

Were open hole logs run? Yes

Date last log run: February 13, 2017

Were unusual drilling circumstances encountered? No

Explanation:

Other Remarks

THE 5 1/2" CASING IS A TIE-BACK STRING INTO THE 4 1/2" LINER AT 9408'.

Lateral Holes

Sec: 16 TWP: 20N RGE: 18W County: WOODWARD

SE SE SW SE

221 FSL 1014 FWL of 1/4 SEC

Depth of Deviation: 9603 Radius of Turn: 573 Direction: 181 Total Length: 5335

Measured Total Depth: 15300 True Vertical Depth: 10185 End Pt. Location From Release, Unit or Property Line: 221

FOR COMMISSION USE ONLY

1136765

Status: Accepted

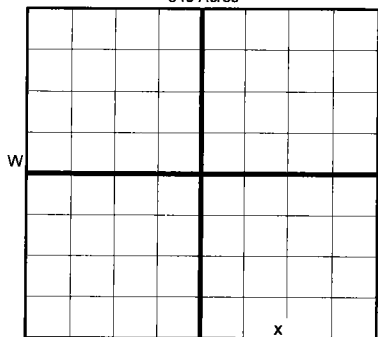
RECEIVED

Form 1002A Rev. 2009

MAY 15 2017

OKLAHOMA CORPORATION COMMISSION

640 Acres



LOCATE WELL

API NO. 153-23599
OTC PROD. UNIT NO. 153218573

PLEASE TYPE OR USE BLACK INK ONLY

NOTE:

Attach copy of original 1002A if recompletion or reentry.

OKLAHOMA CORPORATION COMMISSION

Oil & Gas Conservation Division
Post Office Box 52000
Oklahoma City, Oklahoma 73152-2000
Rule 165:10-3-25

COMPLETION REPORT

ORIGINAL
 AMENDED (Reason)

TYPE OF DRILLING OPERATION

STRAIGHT HOLE DIRECTIONAL HOLE HORIZONTAL HOLE
 SERVICE WELL

If directional or horizontal, see reverse for bottom hole location.

SPUD DATE 1/9/2017
DRLG FINISHED DATE 2/13/2017
DATE OF WELL COMPLETION 3/15/2017
1st PROD DATE 4/3/2017
RECOMP DATE
Longitude (if known) -99.12067W
OPERATOR NAME Corlena Oil Company OTC/OCC OPERATOR NO. 23706
ADDRESS 619 S Tyler St, Ste 210
CITY Amarillo STATE TX ZIP 79101-2303

COMPLETION TYPE

SINGLE ZONE
 MULTIPLE ZONE
Application Date
COMINGLED
Application Date
LOCATION
EXCEPTION ORDER
INCREASED DENSITY
ORDER NO. n/a

CASING & CEMENT (Form 1002C must be attached)

TYPE	SIZE	WEIGHT	GRADE	FEET	PSI	SAX	TOP OF CMT
CONDUCTOR	20	94	H-40	85			Surface
SURFACE	9-5/8"	36	J-55	1475	400	562	Surface
INTERMEDIATE	7"	26	P-110	10,270	3100	621	3000'
PRODUCTION	5-1/2"	20	P-110	9408'			None
LINER	4-1/2"	13.5	P-110	9408' - 15297'	1050	606	9408'
							TOTAL DEPTH 15300'

PACKER @ 9408' BRAND & TYPE Baker S-3 Hyd PLUG @ TYPE PLUG @ TYPE
PACKER @ BRAND & TYPE PLUG @ TYPE PLUG @ TYPE

COMPLETION & TEST DATA BY PRODUCING FORMATION

359 MSNLC

FORMATION	Miss'an (Ex Chester)							Reported to Frac Focus
SPACING & SPACING ORDER NUMBER	640 / 658733							
CLASS: Oil, Gas, Dry, Inj, Disp, Comm Disp, Svc	Gas							
PERFORATED INTERVALS	10442' - 15300' 15293							
ACID/VOLUME	15% HCl / 2176 BBL							
FRACTURE TREATMENT (Fluids/Prop Amounts)	13.2MM Sand 280k BBL Hybrid							

Min Gas Allowable (165:10-17-7) OR Oil Allowable (165:10-13-3)

Gas Purchaser/Measurer
First Sales Date

Red Cliff Midstream
3/23/2017

INITIAL TEST DATA

INITIAL TEST DATE	4/27/2017
OIL-BBL/DAY	50
OIL-GRAVITY (API)	49
GAS-MCF/DAY	2366
GAS-OIL RATIO CU FT/BBL	47320
WATER-BBL/DAY	1395
PUMPING OR FLOWING	Flowing
INITIAL SHUT-IN PRESSURE	510
CHOKE SIZE	46/64
FLOW TUBING PRESSURE	510

AS SUBMITTED

A record of the formations drilled through, and pertinent remarks are presented on the reverse. I declare that I have knowledge of the contents of this report and am authorized by my organization to make this report, which was prepared by me or under my supervision and direction, with the data and facts stated herein to be true, correct, and complete to the best of my knowledge and belief.

J. Frederick
SIGNATURE

J. Frederick

5/8/2017 806-323-9811

PO Box 188

NAME (PRINT OR TYPE)

DATE PHONE NUMBER

ADDRESS

Canadian TX 79014

frederick@hadeng.com

CITY STATE ZIP

EMAIL ADDRESS

PLEASE TYPE OR USE BLACK INK
FORMATION RECORD

Give formation names and tops, if available, or descriptions and thickness of formations drilled through. Show intervals cored or drillstem tested.

LEASE NAME Rosser WELL NO. 16-1H

NAMES OF FORMATIONS	TOP
Mississippian Lime	8888' TVD
St. Geneveive	10186' MD / 10106' TVD

FOR COMMISSION USE ONLY	
ITD on file <input type="checkbox"/> YES <input type="checkbox"/> NO	
APPROVED _____	DISAPPROVED _____
2) Reject Codes	

Were open hole logs run? yes no

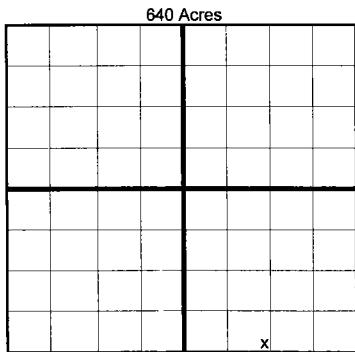
Date Last log was run 2/13/2017

Was CO₂ encountered? yes no at what depths? _____

Was H₂S encountered? yes no at what depths? _____

Were unusual drilling circumstances encountered? yes no
If yes, briefly explain below _____

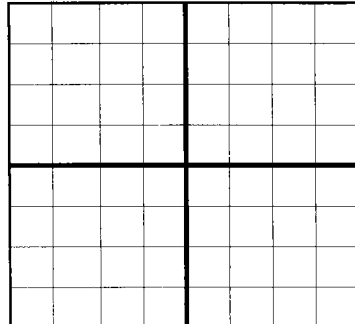
Other remarks: The 5-1/2" casing is a tie-back string into the 4-1/2" liner.



If more than three drainholes are proposed, attach a separate sheet indicating the necessary information.

Direction must be stated in degrees azimuth.
Please note, the horizontal drainhole and its end point must be located within the boundaries of the lease or spacing unit.

Directional surveys are required for all drainholes and directional wells.



BOTTOM HOLE LOCATION FOR DIRECTIONAL HOLE

SEC	TWP	RGE	COUNTY		
Spot Location		Feet From 1/4 Sec Lines		FSL	FWL
1/4	1/4	1/4	1/4		
Measured Total Depth		True Vertical Depth		BHL From Lease, Unit, or Property Line:	

BOTTOM HOLE LOCATION FOR HORIZONTAL HOLE: (LATERALS)

LATERAL #1

SEC	TWP	RGE	COUNTY					
16	20N	18W	Woodward					
Spot Location		Feet From 1/4 Sec Lines		FSL	221'	FWL	1014'	
SE 1/4	SE 1/4	SW 1/4	SE 1/4	Direction		181	Total Length	5335' Vsec
Depth of Deviation		Radius of Turn						
9603'		573						
Measured Total Depth		True Vertical Depth		BHL From Lease, Unit, or Property Line:				
15300'		10185'		221' FSL				

LATERAL #2

SEC	TWP	RGE	COUNTY		
Spot Location		Feet From 1/4 Sec Lines		FSL	FWL
1/4	1/4	1/4	1/4		
Depth of Deviation		Radius of Turn		Total Length	
Measured Total Depth		True Vertical Depth		BHL From Lease, Unit, or Property Line:	

LATERAL #3

SEC	TWP	RGE	COUNTY		
Spot Location		Feet From 1/4 Sec Lines		FSL	FWL
1/4	1/4	1/4	1/4		
Depth of Deviation		Radius of Turn		Total Length	
Measured Total Depth		True Vertical Depth		BHL From Lease, Unit, or Property Line:	

API NO. 153-23599
 OTC PROD. UNIT NO. 153218573

PLEASE TYPE OR USE BLACK INK ONLY
 NOTE:

Attach copy of original 1002A if recompletion or reentry.

ORIGINAL
 AMENDED (Reason)

A: 218573 I

OKLAHOMA CORPORATION COMMISSION
 Oil & Gas Conservation Division
 Post Office Box 52000
 Oklahoma City, Oklahoma 73152-2000
 Rule 165:10-3-25

RECEIVED

Form 1002A Rev. 2009

MAY 15 2017

OKLAHOMA CORPORATION COMMISSION

1016EZ

COMPLETION REPORT

TYPE OF DRILLING OPERATION

STRAIGHT HOLE DIRECTIONAL HOLE HORIZONTAL HOLE
 SERVICE WELL

If directional or horizontal, see reverse for bottom hole location.

COUNTY Woodward SEC 9 TWP 20N RGE 18W

LEASE NAME Rosser WELL NO. 16-1H

SE 1/4 SE 1/4 SW 1/4 SE 1/4 FSL OF 1/4 SEC 300 FWL OF 1/4 SEC 1004

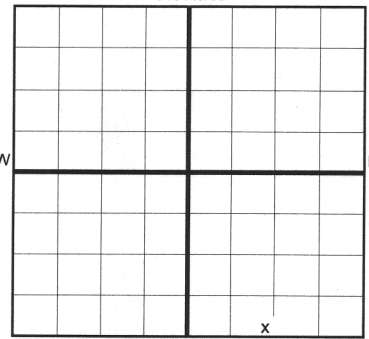
ELEVATION Derrick FL 1868 Ground 1850 Latitude (if known) 36.21749N Longitude (if known) -99.12067W

OPERATOR NAME Corlena Oil Company OTC/OCC OPERATOR NO. 23706

ADDRESS 619 S Tyler St, Ste 210

CITY Amarillo STATE TX ZIP 79101-2303

SPUD DATE 1/9/2017
 DRLG FINISHED DATE 2/13/2017
 DATE OF WELL COMPLETION 3/15/2017
 1st PROD DATE 4/3/2017
 RECOMP DATE
 Longitude (if known) -99.12067W



COMPLETION TYPE

SINGLE ZONE
 MULTIPLE ZONE
 Application Date
 COMMINGLED
 Application Date
 LOCATION
 EXCEPTION ORDER
 INCREASED DENSITY
 ORDER NO.

662896 F.O.
 659077

n/a

CASING & CEMENT (Form 1002C must be attached)

TYPE	SIZE	WEIGHT	GRADE	FEET	PSI	SAX	TOP OF CMT
CONDUCTOR	20	94	H-40	85			Surface
SURFACE	9-5/8"	36	J-55	1475	400	562	Surface
INTERMEDIATE	7"	26	P-110	10,270	3100	621	3000'
PRODUCTION	5-1/2"	20	P-110	9408'			None
LINER	4-1/2"	13.5	P-110	9408' - 15297'	1050	606	9408'
							TOTAL DEPTH 15300'

PACKER @ 9408' BRAND & TYPE Baker S-3 Hyd PLUG @ TYPE PLUG @ TYPE

PACKER @ BRAND & TYPE PLUG @ TYPE PLUG @ TYPE

COMPLETION & TEST DATA BY PRODUCING FORMATION

359 MSNLC

FORMATION	Miss'an (Ex Chester)						Reported to Frac Focus
SPACING & SPACING ORDER NUMBER	640 / 658733						
CLASS: Oil, Gas, Dry, Inj, Disp, Comm Disp, Svc	Gas						
PERFORATED INTERVALS	10442' - 15300' 15293						
ACID/VOLUME	15% HCl / 2176 BBL						
FRACTURE TREATMENT (Fluids/Prop Amounts)	13.2MM Sand 280k BBL Hybrid						

Min Gas Allowable (165:10-17-7)

Gas Purchaser/Measurer
 First Sales Date

Red Cliff Midstream
 3/23/2017

INITIAL TEST DATA

INITIAL TEST DATE	4/27/2017			
OIL-BBL/DAY	50			
OIL-GRAVITY (API)	49			
GAS-MCF/DAY	2366			
GAS-OIL RATIO CU FT/BBL	47320			
WATER-BBL/DAY	1395			
PUMPING OR FLOWING	Flowing			
INITIAL SHUT-IN PRESSURE	510			
CHOKE SIZE	46/64			
FLOW TUBING PRESSURE	510			

AS SUBMITTED

A record of the formations drilled through, and pertinent remarks are presented on the reverse. I declare that I have knowledge of the contents of this report and am authorized by my organization to make this report, which was prepared by me or under my supervision and direction, with the data and facts stated herein to be true, correct, and complete to the best of my knowledge and belief.

SIGNATURE

PO Box 188

ADDRESS

J. Frederick

NAME (PRINT OR TYPE)

Canadian

CITY

TX

STATE

79014

ZIP

5/8/2017

DATE

806-323-9811

PHONE NUMBER

frederick@hadeng.com

EMAIL ADDRESS

EL

SCANNED

JK