

Oklahoma Corporation Commission
Oil & Gas Conservation Division
Post Office Box 52000
Oklahoma City, Oklahoma 73152-2000
Rule 165: 10-3-25

Form 1002A

API No.: 35045236230001

Completion Report

Spud Date: October 31, 2016

OTC Prod. Unit No.: 23429 0

Drilling Finished Date: November 27, 2016

1st Prod Date: December 22, 2016

Completion Date: December 13, 2016

Drill Type: HORIZONTAL HOLE

Well Name: BERRYMAN 21 1HA

Purchaser/Measurer: MARKWEST

Location: ELLIS 21 17N 23W
S2 S2 SW SW
250 FSL 660 FWL of 1/4 SEC
Latitude: 35.927062011 Longitude: -99.663187936
Derrick Elevation: 2361 Ground Elevation: 2343

First Sales Date: 12/22/2016

Operator: FOURPOINT ENERGY LLC 23429

100 SAINT PAUL ST STE 400
DENVER, CO 80206-5140

Completion Type	
X	Single Zone
	Multiple Zone
	Commingled

Location Exception	
Order No	
	654837
	662429

Increased Density	
Order No	
There are no Increased Density records to display.	

Casing and Cement							
Type	Size	Weight	Grade	Feet	PSI	SAX	Top of CMT
SURFACE	9-5/8	36	J-55	862	3520	530	SURFACE
INTERMEDIATE	7	26	P-110	8965	9950	560	4240

Liner								
Type	Size	Weight	Grade	Length	PSI	SAX	Top Depth	Bottom Depth
LINER	4-1/2	11.6	P-110 HC	5583	10960	600	8785	14368

Total Depth: 14418

Packer	
Depth	Brand & Type
There are no Packer records to display.	

Plug	
Depth	Plug Type
There are no Plug records to display.	

Initial Test Data										
Test Date	Formation	Oil BBL/Day	Oil-Gravity (API)	Gas MCF/Day	Gas-Oil Ratio Cu FT/BBL	Water BBL/Day	Pumpin or Flowing	Initial Shut-In Pressure	Choke Size	Flow Tubing Pressure
Jan 20, 2017	CLEVELAND	409	45	1898	4641	1866	FLOWING	1200	36/64	450

Completion and Test Data by Producing Formation

Formation Name: CLEVELAND

Code: 405CLVD

Class: OIL

Spacing Orders

Order No	Unit Size
637222	640

Perforated Intervals

From	To
10064	14255

Acid Volumes

40000 GAL

Fracture Treatments

105064 BBLs WATER 5618720 LBS PROPPANT

Formation	Top
CLEVELAND	9490

Were open hole logs run? No

Date last log run:

Were unusual drilling circumstances encountered? No

Explanation:

Other Remarks

IRREGULAR SECTION.

Lateral Holes

Sec: 21 TWP: 17N RGE: 23W County: ELLIS

NW NE NW NW

33 FNL 695 FWL of 1/4 SEC

Depth of Deviation: 9056 Radius of Turn: 12 Direction: 360 Total Length: 4383

Measured Total Depth: 14418 True Vertical Depth: 9642 End Pt. Location From Release, Unit or Property Line: 33

FOR COMMISSION USE ONLY

1136005

Status: Accepted

TOPOGRAPHIC LAND SURVEYORS OF OKLAHOMA

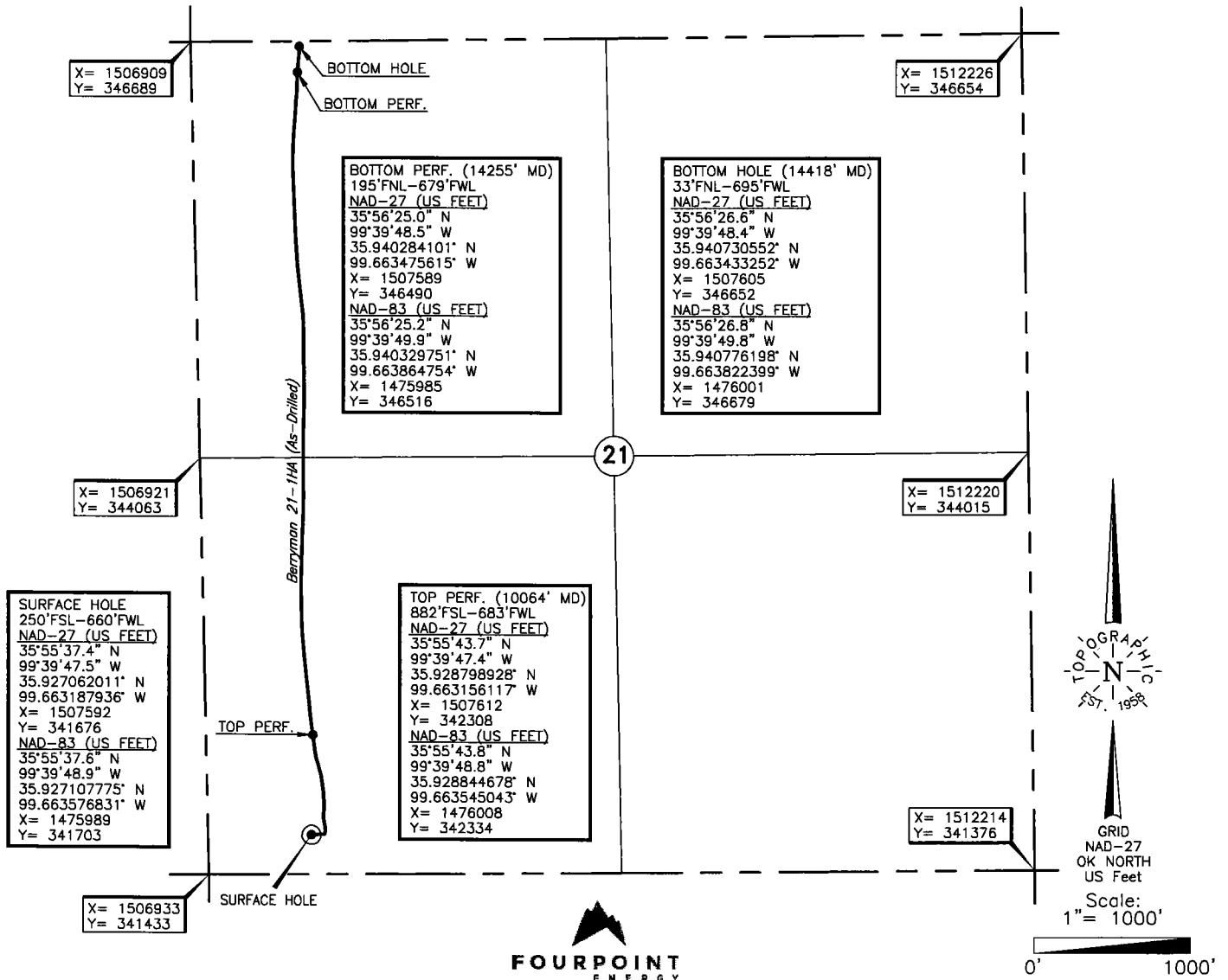
6709 NORTH CLASSEN BLVD., OKLA. CITY, OKLA. 73116 * LOCAL (405) 843-4847 * OUT OF STATE (800) 654-3219
 Certificate of Authorization No. 1293 LS

REVISION "A"
 01-20-2017

ELLIS

County, Oklahoma

250'FSL - 660'FWL Section 21 Township 17N Range 23W I.M.



Operator: FOURPOINT ENERGY, LLC.

Lease Name: BERRYMAN

Well No.: 21-1HA **ELEVATION:** 2343' Gr. at Stake

Topography & Vegetation Loc. fell in pasture

Good Drill Site? Yes Reference Stakes or Alternate Location
 Stakes Set None

Best Accessibility to Location From Existing Well to the South

Distance & Direction
 from Hwy Jct or Town ±21 miles Southeast of Arnett, Oklahoma

This information was gathered with a GPS receiver with ±1 foot Horiz./Vert. accuracy.

DATUM: NAD-27
 LAT: 35°55'37.4" N
 LONG: 99°39'47.5" W
 LAT: 35.927062011° N
 LONG: 99.663187936° W
 STATE PLANE
 COORDINATES: (US Feet)
 ZONE: OK NORTH
 X: 1507592
 Y: 341676

Date of Drawing: Jan. 05, 2017
 Invoice # 269289 Date Staked: Nov. 07, 2014 JP

FINAL AS-DRILLED PLAT

AS-DRILLED INFORMATION
 FURNISHED BY FOURPOINT ENERGY, LLC.