

Oklahoma Corporation Commission
Oil & Gas Conservation Division
Post Office Box 52000
Oklahoma City, Oklahoma 73152-2000
Rule 165: 10-3-25

Form 1002A

API No.: 35043234770001

Completion Report

Spud Date: September 18, 2016

OTC Prod. Unit No.: 463702293

Drilling Finished Date: October 29, 2016

1st Prod Date: November 23, 2016

Completion Date: November 18, 2016

Drill Type: HORIZONTAL HOLE

Min Gas Allowable: Yes

Well Name: RUSSELL 17-19-17 1H

Purchaser/Measurer: ENABLE

Location: DEWEY 20 19N 17W
W2 NE NE NW
330 FNL 2250 FWL of 1/4 SEC
Latitude: 36.1144348 Longitude: -99.03626075
Derrick Elevation: 1939 Ground Elevation: 1909

First Sales Date: 11/23/2016

Operator: TAPSTONE ENERGY LLC 23467

100 E MAIN ST
OKLAHOMA CITY, OK 73104-2509

Completion Type	
X	Single Zone
	Multiple Zone
	Commingled

Location Exception	
Order No	
660774	

Increased Density	
Order No	
There are no Increased Density records to display.	

Casing and Cement							
Type	Size	Weight	Grade	Feet	PSI	SAX	Top of CMT
CONDUCTOR	13 3/8	54.5	J-55	348	1054	339	SURFACE
SURFACE	9 5/8	36	J-55	1470	1000	582	SURFACE
PRODUCTION	7	26	P-110	11191	1700	715	7000

Liner								
Type	Size	Weight	Grade	Length	PSI	SAX	Top Depth	Bottom Depth
LINER	4 1/2	13.5	P-110	5876	3250	515	10150	16026

Total Depth: 16029

Packer	
Depth	Brand & Type
There are no Packer records to display.	

Plug	
Depth	Plug Type
There are no Plug records to display.	

Initial Test Data

Test Date	Formation	Oil BBL/Day	Oil-Gravity (API)	Gas MCF/Day	Gas-Oil Ratio Cu FT/BBL	Water BBL/Day	Pumpin or Flowing	Initial Shut-In Pressure	Choke Size	Flow Tubing Pressure
Dec 11, 2016	MISSISSIPPIAN	277	42	2219	8010	2407	FLOWING		32/64	1220

Completion and Test Data by Producing Formation

Formation Name: MISSISSIPPIAN

Code: 359MSSP

Class: OIL

Spacing Orders

Order No	Unit Size
656155	640

Perforated Intervals

From	To
11143	15910

Acid Volumes

54,138 GALLONS 15% HCL

Fracture Treatments

292,072 BARRELS, 14,091,614 POUNDS PROPPANT

Formation	Top
BASE HEEBNER	6516
TONKAWA SAND	6966
COTTAGE GROVE	7438
HOGSHOOTER	7726
OSWEGO LIME	8175
ATOKA	8998
MISSISSIPPIAN	9540

Were open hole logs run? Yes

Date last log run: October 26, 2016

Was H2S Encountered? Yes

Depth Encountered: 10743

Were unusual drilling circumstances encountered? No

Explanation:

Other Remarks

DRILLED WITH FULL RETURNS. OCC - OPERATOR SET DV TOOL AT 6,587' IN 7" CASING, SEE 1002C. OCC - THIS DOCUMENT IS ACCEPTED BASED ON THE DATA SUBMITTED.

Lateral Holes

Sec: 17 TWP: 19N RGE: 17W County: DEWEY

NW NE NE NW

194 FNL 1996 FWL of 1/4 SEC

Depth of Deviation: 10183 Radius of Turn: 1220 Direction: 358 Total Length: 4626

Measured Total Depth: 16029 True Vertical Depth: 10743 End Pt. Location From Release, Unit or Property Line: 194

FOR COMMISSION USE ONLY

1135378

Status: Accepted

RECEIVED

Form 1002A Rev. 2009

DEC 12 2016

OKLAHOMA CORPORATION COMMISSION

API NO. 3504323477
OTC PROD. UNIT NO. 463702293

PLEASE TYPE OR USE BLACK INK ONLY
NOTE:

Attach copy of original 1002A if recompletion or reentry.

OKLAHOMA CORPORATION COMMISSION
Oil & Gas Conservation Division
Post Office Box 52000
Oklahoma City, Oklahoma 73152-2000
Rule 165:10-3-25

ORIGINAL
 AMENDED (Reason)

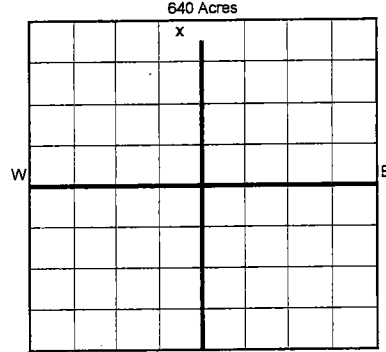
COMPLETION REPORT

TYPE OF DRILLING OPERATION
 STRAIGHT HOLE DIRECTIONAL HOLE HORIZONTAL HOLE
 SERVICE WELL

If directional or horizontal, see reverse for bottom hole location.

COUNTY DEWEY SEC 20 TWP 19N RGE 17W
LEASE NAME RUSSELL 17-19-17 WELL NO. 1H
W2 1/4 NE 1/4 NE 1/4 NW 1/4 (FNL) OF 1/4 SEC 330' FWL OF 1/4 SEC 2250'
ELEVATION N Derrick 1939' Ground 1909' Latitude (if known) 36.1144348 Longitude (if known) -99.03626075
OPERATOR NAME Tapstone Energy, LLC OTC/OCC OPERATOR NO. 23467
ADDRESS PO Box 1608
CITY Oklahoma City STATE OK ZIP 73101-1608

SPUD DATE 9/18/2016
DRLG FINISHED DATE 10/29/2016
DATE OF WELL COMPLETION 11/18/2016
1st PROD DATE 11/23/2016
RECOMP DATE



COMPLETION TYPE
SINGLE ZONE X
MULTIPLE ZONE
COMMINGLED
LOCATION EXCEPTION ORDER INCREASED DENSITY ORDER NO. 6607410
656166 (Emergency)

CASING & CEMENT (Form 1002C must be attached)

TYPE	SIZE	WEIGHT	GRADE	FEET	PSI	SAX	TOP OF CMT
CONDUCTOR	13 3/8	54.5	J-55	348'	1,054	339	SURFACE
SURFACE	9 5/8	36	J-55	1470'	1000	582	SURFACE
INTERMEDIATE	7	26	P-110	11,191'	1700	715	7000 (EST)
PRODUCTION							
LINER	4 1/2	13.5	P-110	10,150'-16,026'	3250	515	10,150'
TOTAL DEPTH							16,029'

PACKER @ _____ BRAND & TYPE _____ PLUG @ _____ TYPE _____ PLUG @ _____ TYPE _____
PACKER @ _____ BRAND & TYPE _____ PLUG @ _____ TYPE _____ PLUG @ _____ TYPE _____

COMPLETION & TEST DATA BY PRODUCING FORMATION 359MESP

FORMATION	MISSISSIPPIAN								
SPACING & SPACING ORDER NUMBER	640 Acre - 656155								
CLASS: Oil, Gas, Dry, Inj, Disp, Comm Disp, Svc	OIL								
PERFORATED INTERVALS	11,143'-15,910'								
ACID/VOLUME	54,138 gal 15% HCL								
FRACTURE TREATMENT (Fluids/Prop Amounts)	292072 bbls 14,091,614# Prop								

Monitor Report to Frac Focus

Min Gas Allowable (165:10-17-7) Gas Purchaser/Measurer ENABLE
OR First Sales Date 11/23/2016
 Oil Allowable (165:10-13-3)

INITIAL TEST DATA

INITIAL TEST DATE	12/11/2016								
OIL-BBL/DAY	277								
OIL-GRAVITY (API)	42								
GAS-MCF/DAY	2219								
GAS-OIL RATIO CU FT/BBL	8010								
WATER-BBL/DAY	2407								
PUMPING OR FLOWING	Flowing								
INITIAL SHUT-IN PRESSURE									
CHOKE SIZE	32/64"								
FLOW TUBING PRESSURE	1220								

AS SUBMITTED

A record of the formations drilled through, and pertinent remarks are presented on the reverse. I declare that I have knowledge of the contents of this report and am authorized by my organization to make this report, which was prepared by me or under my supervision and direction, with the data and facts stated herein to be true, correct, and complete to the best of my knowledge and belief.

Bryan Rother
SIGNATURE NAME (PRINT OR TYPE) DATE 12-12-16 PHONE NUMBER 405-702-1600
PO Box 1608 Oklahoma City OK 73101-1608 brother@tapstoneenergy.com
ADDRESS CITY STATE ZIP EMAIL ADDRESS

PLEASE TYPE OR USE BLACK INK ONLY
FORMATION RECORD

Give formation names and tops, if available, or descriptions and thickness of formations drilled through. Show intervals cored or drillstem tested.

LEASE NAME RUSSELL 17-19-17

WELL NO. 1H

NAMES OF FORMATIONS	TOP
BASE HEEBNER	6516'
TONKAWA SAND	6966'
COTTAGE GROVE	7438'
HOGSHOOTER	7726'
OSWEGO LIME	8175'
ATOKA	8998'
MISSISSIPPIAN	9540'

FOR COMMISSION USE ONLY

ITD on file YES NO

APPROVED _____ DISAPPROVED _____

2) Reject Codes _____

Were open hole logs run? yes no

Date Last log was run 10/26/2016

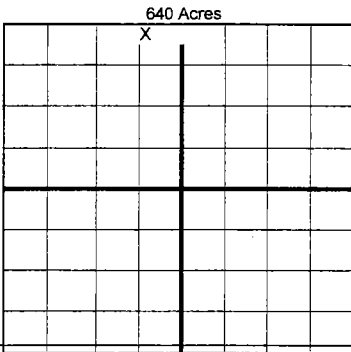
Was CO₂ encountered? yes no at what depths? _____

Was H₂S encountered? yes no at what depths? 10,743'

Were unusual drilling circumstances encountered? yes no

If yes, briefly explain below _____

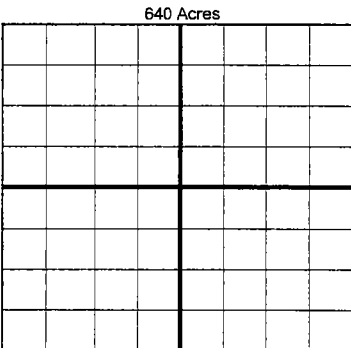
Other remarks: DRILLED WITH FULL RETURNS. OCC - operator set DV tool at 6587' in 7" casing see 1002C



If more than three drainholes are proposed, attach a separate sheet indicating the necessary information.

Direction must be stated in degrees azimuth. Please note, the horizontal drainhole and its end point must be located within the boundaries of the lease or spacing unit.

Directional surveys are required for all drainholes and directional wells.



BOTTOM HOLE LOCATION FOR DIRECTIONAL HOLE

SEC	TWP	RGE	COUNTY				
Spot Location	1/4	1/4	1/4	1/4	Feet From 1/4 Sec Lines	FSL	FWL
Measured Total Depth	True Vertical Depth		BHL From Lease, Unit, or Property Line:				

BOTTOM HOLE LOCATION FOR HORIZONTAL HOLE: (LATERALS)

LATERAL #1

SEC	TWP	RGE	COUNTY								
17	19N	17W	DEWEY								
Spot Location	NW 1/4	NE 1/4	NE 1/4	NW 1/4	Feet From 1/4 Sec Lines	FNL 194'	FWL 1996'				
Depth of Deviation	10,183'		Radius of Turn	1,220'		Direction	358		Total Length	4,626'	
Measured Total Depth	16,029'		True Vertical Depth		10,743'		BHL From Lease, Unit, or Property Line:				194'

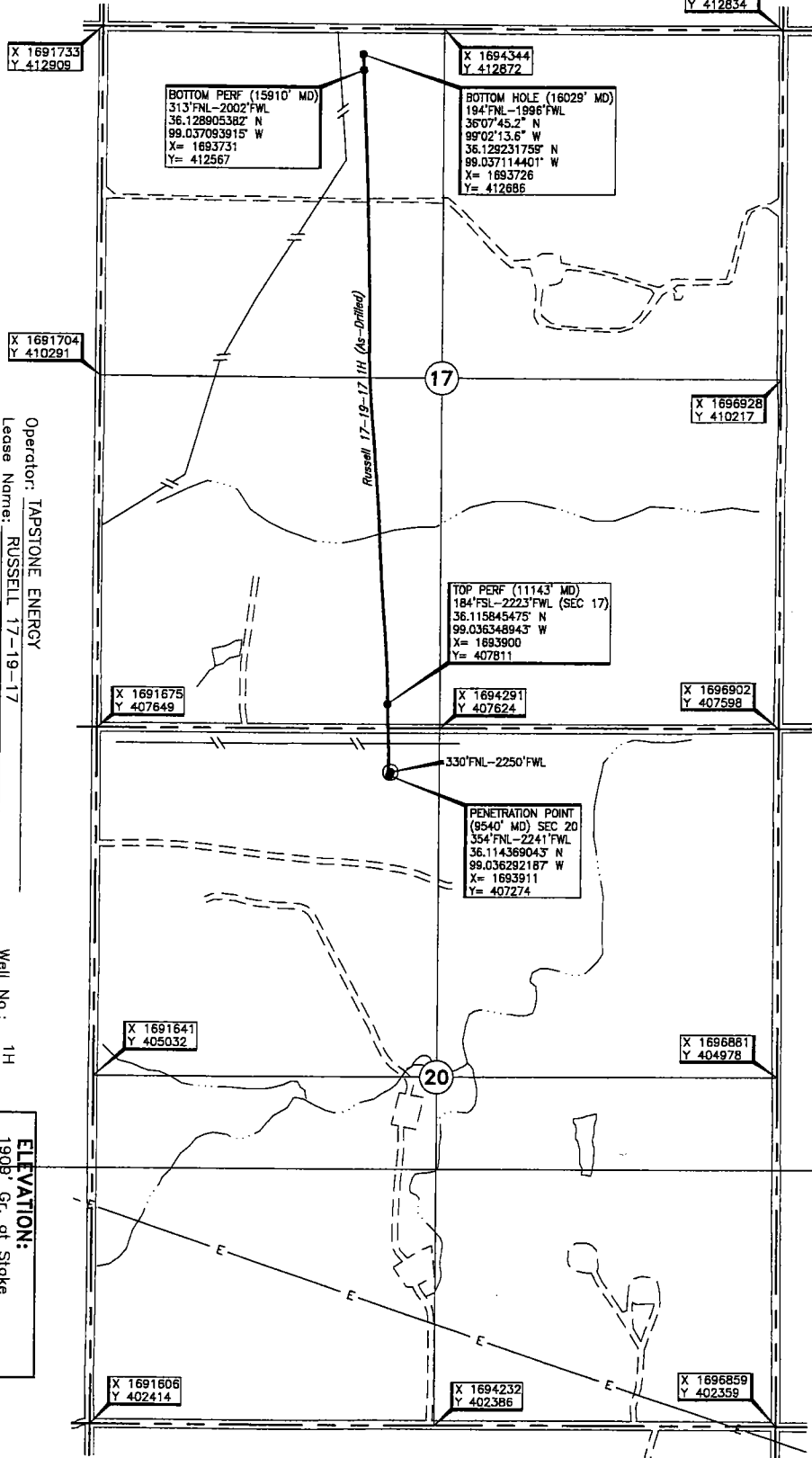
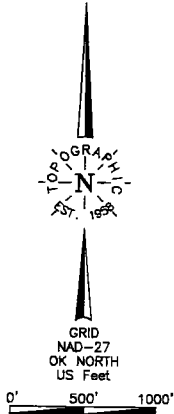
LATERAL #2

SEC	TWP	RGE	COUNTY				
Spot Location	1/4	1/4	1/4	1/4	Feet From 1/4 Sec Lines	FSL	FWL
Depth of Deviation	Radius of Turn		Direction		Total Length		
Measured Total Depth	True Vertical Depth		BHL From Lease, Unit, or Property Line:				

LATERAL #3

SEC	TWP	RGE	COUNTY				
Spot Location	1/4	1/4	1/4	1/4	Feet From 1/4 Sec Lines	FSL	FWL
Depth of Deviation	Radius of Turn		Direction		Total Length		
Measured Total Depth	True Vertical Depth		BHL From Lease, Unit, or Property Line:				

330'FNL - 2250'FWL Section 20 Township 19N Range 17W I.M.



Operator: TAPSTONE ENERGY
 Lease Name: RUSSELL 17-19-17
 Topography & Vegetation: Loc. fall in sloped pasture, ±215' South of E-W pipeline
 Well No.: 1H
 ELEVATION: 1909 Gr. at Stake

Good Drill Site? Yes
 Reference Stakes or Alternate Location
 Stakes Set None

Best Accessibility to Location From North off county road
 Distance & Direction From Selling, Ok, go ±6.7 mi. West on St. Hwy. 51, then ±2.0 mi. South
 from Hwy jet or Town to the NW Cor. of Sec. 20-119N-R17W

This information was received from a GPS/GNSS receiver and may not be accurate.

DATUM: NAD-27
 LAT: 36°06'52.0"N
 LONG: 99°02'10.5"W
 LAT: 36.114434758° N
 LONG: 99.036260745° W
 STATE PLANE
 COORDINATES: (US Feet)
 ZONE: OK NORTH
 X: 1693921
 Y: 407297

268444 Date of Drawing: Nov. 21, 2016
 Invoice # 263579 Date Staked: Aug. 10, 2016 JP

FINAL AS-DRILLED PLAT
 AS-DRILLED INFORMATION
 FURNISHED BY TAPSTONE ENERGY