

Oklahoma Corporation Commission
 Oil & Gas Conservation Division
 Post Office Box 52000
 Oklahoma City, Oklahoma 73152-2000
 Rule 165: 10-3-25

Form 1002A

API No.: 35037284760002

Completion Report

Spud Date: May 10, 1995

OTC Prod. Unit No.:

Drilling Finished Date: May 15, 1995

Amended

1st Prod Date: June 10, 1995

Amend Reason: CONVERTED TO DISPOSAL WELL

Completion Date: December 15, 1995

Recomplete Date: June 09, 2016

Drill Type: STRAIGHT HOLE

SERVICE WELL

Well Name: SHOLMIRE 19-2

Purchaser/Measurer:

Location: CREEK 19 15N 9E
 C NE NE NW
 2310 FSL 2310 FWL of 1/4 SEC
 Latitude: 35.769166 Longitude: -96.39769444
 Derrick Elevation: 841 Ground Elevation: 835

First Sales Date:

Operator: LIBERTY OPERATING INC 15227

1827 ATCHISON DR
 NORMAN, OK 73069-8225

Completion Type	
X	Single Zone
	Multiple Zone
	Commingled

Location Exception	
Order No	
There are no Location Exception records to display.	

Increased Density	
Order No	
There are no Increased Density records to display.	

Casing and Cement							
Type	Size	Weight	Grade	Feet	PSI	SAX	Top of CMT
SURFACE	8 5/8	32	1	400	3000	290	SURFACE
PRODUCTION	5 1/2	15.5	1	2769	3000	150	1955

Liner								
Type	Size	Weight	Grade	Length	PSI	SAX	Top Depth	Bottom Depth
There are no Liner records to display.								

Total Depth: 2770

Packer	
Depth	Brand & Type
2674	BAKER TENSION

Plug	
Depth	Plug Type
There are no Plug records to display.	

Initial Test Data

Test Date	Formation	Oil BBL/Day	Oil-Gravity (API)	Gas MCF/Day	Gas-Oil Ratio Cu FT/BBL	Water BBL/Day	Pumpin or Flowing	Initial Shut-In Pressure	Choke Size	Flow Tubing Pressure
-----------	-----------	-------------	-------------------	-------------	-------------------------	---------------	-------------------	--------------------------	------------	----------------------

There are no Initial Data records to display.

Completion and Test Data by Producing Formation

Formation Name: SKINNER

Code: 404SKNR

Class: DRY

Spacing Orders

Order No	Unit Size
There are no Spacing Order records to display.	

Perforated Intervals

From	To
2363	2378

Acid Volumes

750 GALLONS

Fracture Treatments

384 BARRELS SW

Formation Name: BARTLESVILLE

Code: 404BRVL

Class: DISP

Spacing Orders

Order No	Unit Size
There are no Spacing Order records to display.	

Perforated Intervals

From	To
2724	2734

Acid Volumes

500 GALLONS

Fracture Treatments

259 BARRELS SW

Formation	Top
SAND, SHALE AND LIME	0
SAND, POROUS, OIL STAIN & ODOR	2363
SKINNER SAND	2363
SHALE, BLACK	2378
SAND, POROUS, OIL STAIN & ODOR	2724
BARTLESVILLE SAND	2724
SANDY SHALE	2734

Were open hole logs run? Yes

Date last log run: May 15, 1995

Were unusual drilling circumstances encountered? No

Explanation:

Other Remarks

WELL CONVERTED TO DISPOSAL WELL IN BARTLESVILLE SAND @ 2,724' - 2,734'. 2 3/8" TUBING RAN TO 2,724'. BAKER TENSION PACKER SET @ 2,674'. PERMIT NUMBER 1602110027

FOR COMMISSION USE ONLY

1135887

Status: Accepted

RECEIVED

Form 1002A Rev. 2009

API NO. 037-28476

PLEASE TYPE OR USE BLACK INK ONLY NOTE:

Attach copy of original 1002A if recompletion or reentry.

OKLAHOMA CORPORATION COMMISSION Oil & Gas Conservation Division Post Office Box 52000 Oklahoma City, Oklahoma 73152-2000 Rule 165:10-3-25

FEB 08 2017

OKLAHOMA CORPORATION COMMISSION

COMPLETION REPORT

ORIGINAL AMENDED (Reason) Converted to disposal well.

TYPE OF DRILLING OPERATION STRAIGHT HOLE DIRECTIONAL HOLE HORIZONTAL HOLE SERVICE WELL

SPUD DATE 5-10-95

DRLG FINISHED DATE 5-15-95

DATE OF WELL COMPLETION 12-15-95

1st PROD DATE 6-10-95

RECOMP DATE 12-15-95

Longitude (if known) -96.39769444

COUNTY Creek SEC 19 TWP 15N RGE 9E

LEASE NAME Sholmire WELL NO. 19-2

C 1/4 NE 1/4 NE 1/4 NW 1/4 FSL OF 1/4 SEC 2310 FWL OF 1/4 SEC 2310

ELEVATION N Derrick 841 Ground 835 Latitude (if known) 35.769166

OPERATOR NAME Liberty Operating, Inc. OTC/OCC OPERATOR NO. 15227

ADDRESS 1827 Atchison Dr.

CITY Norman STATE OK ZIP 73069

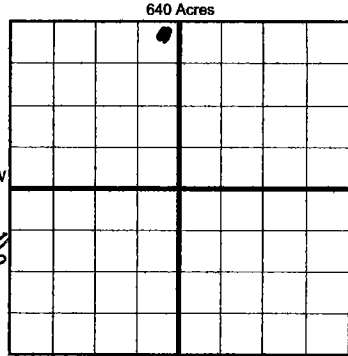


Table with 2 columns: Completion Type (Single Zone, Multiple Zone, etc.) and Location/Exception Order.

Table with 8 columns: Type, Size, Weight, Grade, Feet, PSI, SAX, Top of CMT. Rows include Conductor, Surface, Intermediate, Production, Liner.

PACKER @ 2674 BRAND & TYPE BKR tension PLUG @ TYPE PLUG @ TYPE TOTAL DEPTH 2770

COMPLETION & TEST DATA BY PRODUCING FORMATION 404 SKNR 404 BRVL

Table with 4 columns: Formation (Skinner, Bartlesville), Spacing & Spacing Order Number, Class, Perforated Intervals, Acid/Volume, Fracture Treatment.

Min Gas Allowable (165:10-17-7) OR Oil Allowable (165:10-13-3) Gas Purchaser/Measurer NA First Sales Date NA

Table with 4 columns: Initial Test Date, Oil-BBL/DAY, Oil-Gravity (API), Gas-MCF/DAY, Gas-Oil Ratio CU FT/BBL, Water-BBL/DAY, Pumping or Flowing, Initial Shut-in Pressure, Choke Size, Flow Tubing Pressure.

AS SUBMITTED

A record of the formations drilled through, and pertinent remarks are presented on the reverse. I declare that I have knowledge of the contents of this report and am authorized by my organization to make this report, which was prepared by me or under my supervision and direction, with the data and facts stated herein to be true, correct, and complete to the best of my knowledge and belief. Wayne McPherson 2-7-17 405-329-6200

PLEASE TYPE OR USE BLACK INK ONLY
FORMATION RECORD

Give formation names and tops, if available, or descriptions and thickness of formations drilled through. Show intervals cored or drillstem tested.

LEASE NAME Sholmire WELL NO. 19-2

NAMES OF FORMATIONS	TOP
Sand, shale + lime	Surface
Sand, porous, oil stain & odor	2363
Shale, black	2378
Sand, porous, oil stain & odor	2724
Sandy shale	2734
Skinner Sand	2363
Bartlesville Sand	2724

FOR COMMISSION USE ONLY

ITD on file YES NO

APPROVED _____ DISAPPROVED _____

2) Reject Codes _____

Were open hole logs run? yes no

Date Last log was run 5-15-95

Was CO₂ encountered? yes no at what depths? _____

Was H₂S encountered? yes no at what depths? _____

Were unusual drilling circumstances encountered? yes no
If yes, briefly explain below _____

Other remarks: Well converted to disposal well in Bartlesville sand @ 2724-2734
2 3/8" tubing ran to 2724. Baker Tension packer set @ 2674.
Permit 1602110027

640 Acres

If more than three drainholes are proposed, attach a separate sheet indicating the necessary information.

Direction must be stated in degrees azimuth. Please note, the horizontal drainhole and its end point must be located within the boundaries of the lease or spacing unit.

Directional surveys are required for all drainholes and directional wells.

640 Acres

BOTTOM HOLE LOCATION FOR DIRECTIONAL HOLE

SEC	TWP	RGE	COUNTY
Spot Location			
1/4	1/4	1/4	1/4
Measured Total Depth		True Vertical Depth	BHL From Lease, Unit, or Property Line:

BOTTOM HOLE LOCATION FOR HORIZONTAL HOLE: (LATERALS)

LATERAL #1

SEC	TWP	RGE	COUNTY
Spot Location			
1/4	1/4	1/4	1/4
Depth of Deviation		Radius of Turn	Direction
			Total Length
Measured Total Depth		True Vertical Depth	BHL From Lease, Unit, or Property Line:

LATERAL #2

SEC	TWP	RGE	COUNTY
Spot Location			
1/4	1/4	1/4	1/4
Depth of Deviation		Radius of Turn	Direction
			Total Length
Measured Total Depth		True Vertical Depth	BHL From Lease, Unit, or Property Line:

LATERAL #3

SEC	TWP	RGE	COUNTY
Spot Location			
1/4	1/4	1/4	1/4
Depth of Deviation		Radius of Turn	Direction
			Total Length
Measured Total Depth		True Vertical Depth	BHL From Lease, Unit, or Property Line: