

Oklahoma Corporation Commission
Oil & Gas Conservation Division
Post Office Box 52000
Oklahoma City, Oklahoma 73152-2000
Rule 165: 10-3-25

Form 1002A

API No.: 35027214780003

Completion Report

Spud Date: September 16, 2015

OTC Prod. Unit No.: 027-216939

Drilling Finished Date: September 29, 2015

1st Prod Date: December 05, 2015

Amended

Completion Date: January 01, 2016

Amend Reason: RECOMPLETE MCLISH

Recomplete Date: December 20, 2016

Drill Type: DIRECTIONAL HOLE

Well Name: STERLING 1

Purchaser/Measurer:

Location: CLEVELAND 22 8N 2W
NE NW SW SW
1200 FSL 348 FWL of 1/4 SEC
Derrick Elevation: 1166 Ground Elevation: 1151

First Sales Date:

Operator: GLB EXPLORATION INC 18634

7716 MELROSE LN
OKLAHOMA CITY, OK 73127-6002

| Completion Type | |
|-----------------|---------------|
| X | Single Zone |
| | Multiple Zone |
| | Commingle |

| Location Exception | |
|--------------------|--|
| Order No | |
| 650022 | |

| Increased Density | |
|--|--|
| Order No | |
| There are no Increased Density records to display. | |

| Casing and Cement | | | | | | | |
|-------------------|-------|--------|-------|------|-----|-----|------------|
| Type | Size | Weight | Grade | Feet | PSI | SAX | Top of CMT |
| CONDUCTOR | 16 | 52 | J-55 | 80 | | 6 | SURFACE |
| SURFACE | 8 5/8 | 24 | J-55 | 1021 | 500 | 525 | SURFACE |
| PRODUCTION | 5 1/2 | 17 | N-80 | 8717 | 500 | 175 | 7550 |

| Liner | | | | | | | | |
|--|------|--------|-------|--------|-----|-----|-----------|--------------|
| Type | Size | Weight | Grade | Length | PSI | SAX | Top Depth | Bottom Depth |
| There are no Liner records to display. | | | | | | | | |

Total Depth: 8759

| Packer | |
|---|--------------|
| Depth | Brand & Type |
| There are no Packer records to display. | |

| Plug | |
|-------|-----------|
| Depth | Plug Type |
| 8550 | CIBP |

| Initial Test Data |
|-------------------|
|-------------------|

| Test Date | Formation | Oil BBL/Day | Oil-Gravity (API) | Gas MCF/Day | Gas-Oil Ratio Cu FT/BBL | Water BBL/Day | Pumpin or Flowing | Initial Shut-In Pressure | Choke Size | Flow Tubing Pressure |
|--------------|-----------|-------------|-------------------|-------------|-------------------------|---------------|-------------------|--------------------------|------------|----------------------|
| Dec 15, 2016 | MCLISH | 36 | 35 | | | 124 | PUMPING | 100 | | |

Completion and Test Data by Producing Formation

Formation Name: MCLISH

Code: 202MCLS

Class: OIL

Spacing Orders

| Order No | Unit Size |
|----------|-----------|
| 184054 | 40 |

Perforated Intervals

| From | To |
|------|------|
| 8494 | 8530 |

Acid Volumes

| |
|-------------------------------|
| 3,000 GALLONS 7 1/2% NEFE HCL |
|-------------------------------|

Fracture Treatments

| |
|--|
| 831 BARRELS XL GELLED 4% KCL WATER WITH 34,000 POUNDS 20/40 WHITE SAND |
|--|

| Formation | Top |
|-----------|------|
| MCLISH | 8370 |

Were open hole logs run? Yes

Date last log run: September 30, 2015

Were unusual drilling circumstances encountered? No

Explanation:

Other Remarks

There are no Other Remarks.

Bottom Holes

Sec: 22 TWP: 8N RGE: 2W County: CLEVELAND

SW NW NW SW

2299 FSL 187 FWL of 1/4 SEC

Depth of Deviation: 0 Radius of Turn: 0 Direction: 0 Total Length: 0

Measured Total Depth: 8759 True Vertical Depth: 8675 End Pt. Location From Release, Unit or Property Line: 187

FOR COMMISSION USE ONLY

1135695

Status: Accepted

RECEIVED

JAN 17 2017

Form 1002A
Rev. 2009

API NO. **027-214784**
OTC PROD. UNIT NO. **027-216939**
PLEASE TYPE OR USE BLACK INK ONLY
NOTE: Attach copy of original 1002A if recompletion or rec

OKLAHOMA CORPORATION COMMISSION
Oil & Gas Conservation Division
Post Office Box 52000
Oklahoma City, Oklahoma 73152-2000
Rule 165:10-3-25

OKLAHOMA CORPORATION
COMMISSION

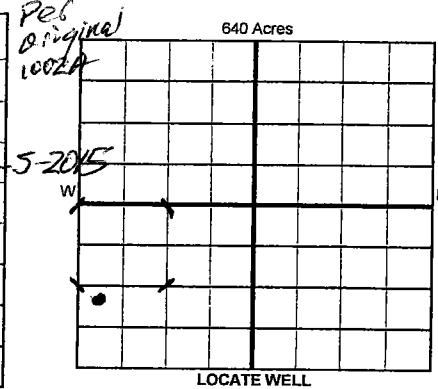
ORIGINAL
☒ AMENDED (Reason) **Recomplete McListh**

COMPLETION REPORT

TYPE OF DRILLING OPERATION
☐ STRAIGHT HOLE ☒ DIRECTIONAL HOLE ☐ HORIZONTAL HOLE
☐ SERVICE WELL

If directional or horizontal, see reverse for bottom hole location.

| | | | | |
|--|-----------------------------------|---|------------------------------|----------------------------|
| COUNTY CLEVELAND | SEC 22 | TWP 8N | RGE 2W | SPUD DATE 4-16-2015 |
| LEASE NAME STERLING | WELL NO. 1 | DATE OF WELL COMPLETION 6-1-2016 | 1st PROD DATE 5-20-15 | |
| NE 1/4 NW 1/4 SW 1/4 SW 1/4 FSL 1200 | FWL OF 1/4 SEC 348 | RECOMP DATE 12/20/16 | | |
| ELEVATION N Derrick 1166 Ground 1151 | Latitude (if known) | Longitude (if known) | | |
| OPERATOR NAME GLB EXPLORATION, INC. | OTC/OCC OPERATOR N 18634-0 | | | |
| ADDRESS 7716 MELROSE LANE | | | | |
| CITY OKLAHOMA CITY | STATE OK | ZIP 73127 | | |



COMPLETION TYPE
☒ SINGLE ZONE
☐ MULTIPLE ZONE
Application Date
☐ COMMINGLED
Application Date
LOCATION **650022 F.L.**
EXCEPTION ORDER **643086**
INCREASED DENSITY
ORDER NO.

CASING & CEMENT (Form 1002C must be attached)

| TYPE | SIZE | WEIGHT | GRADE | FEET | PSI | SAX | TOP OF CMT |
|--------------|-------|--------|-------|------|-----|-----|------------|
| CONDUCTOR | 16 | 52 | J-55 | 80 | - | 695 | SURFACE |
| SURFACE | 8 5/8 | 24 | J-55 | 1021 | 500 | 525 | SURFACE |
| INTERMEDIATE | | | | | | | |
| PRODUCTION | 5 1/2 | 17 | N-80 | 8717 | 500 | 175 | 7550 |
| LINER | | | | | | | |

PACKER @ _____ BRAND & TYPE _____ PLUG @ **8550** TYPE **CIBP** PLUG @ _____ TYPE _____ TOTAL DEPTH **8759**
PACKER @ _____ BRAND & TYPE _____ PLUG @ _____ TYPE _____ PLUG @ _____ TYPE _____

COMPLETION & TEST DATA BY PRODUCING FORMATION **202 MCLS**

| | | | | | | | |
|---|--|--|--|--|--|--|-------------------------------|
| FORMATION | McListh | | | | | | |
| SPACING & SPACING ORDER NUMBER | 40-184054 | | | | | | Reported to Frac Focus |
| CLASS: Oil, Gas, Dry, Inj, Disp, Comm Disp, Svc | OIL | | | | | | |
| PERFORATED INTERVALS | 8494-8530 | | | | | | |
| ACID/VOLUME | 3000 GAL 7 1/2% NE FE HCL | | | | | | |
| FRACTURE TREATMENT (Fluids/Prop Amounts) | 831 bbls XL GELLED 49% KCL Water with 34000# 20/40 White sand | | | | | | |

Min Gas Allowable (165:10-17-7) _____ Gas Purchaser/Measurer _____
OR _____ First Sales Date _____
Oil Allowable (165:10-13-3) _____

INITIAL TEST DATA

| | | | | | |
|--------------------------|-----------------|--|--|--|--|
| INITIAL TEST DATE | 12/15/16 | | | | |
| OIL-BBL/DAY | 36 | | | | |
| OIL-GRAVITY (API) | 35 | | | | |
| GAS-MCF/DAY | 0 | | | | |
| GAS-OIL RATIO CU FT/BBL | — | | | | |
| WATER-BBL/DAY | 124 | | | | |
| PUMPING OR FLOWING | PUMPING | | | | |
| INITIAL SHUT-IN PRESSURE | 100 | | | | |
| CHOKE SIZE | — | | | | |
| FLOW TUBING PRESSURE | — | | | | |

AS SUBMITTED

A record of the formations drilled through and pertinent remarks are presented on the reverse. I declare that I have knowledge of the contents of this report and am authorized by my organization to make this report, which was prepared by me or under my supervision and direction, with the data and facts stated herein to be true, correct, and complete to the best of my knowledge and belief.

SIGNATURE **GLENN BLUMSTEIN** DATE **1/1/17** PHONE NUMBER **405-757-0049**
NAME (PRINT OR TYPE)
ADDRESS **7716 MELROSE LANE** CITY **OKC** STATE **OK** ZIP **73127** EMAIL ADDRESS **glb@glbexplorationinc.com**

PLEASE TYPE OR USE BLACK INK ONLY
FORMATION RECORD

Give formation names and tops, if available, or descriptions and thickness of formations drilled through. Show intervals cored or drillstem tested.

LEASE NAME STERLING

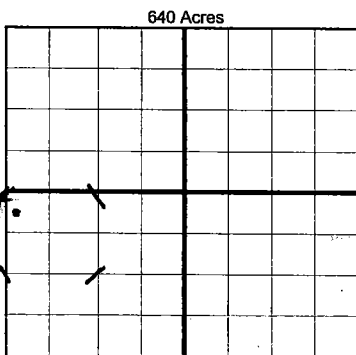
WELL NO. 1

| NAMES OF FORMATIONS | TOP |
|---------------------|-------------|
| <u>Mc LISH</u> | <u>8370</u> |

| FOR COMMISSION USE ONLY | |
|--|-------------------|
| ITD on file <input type="checkbox"/> YES <input type="checkbox"/> NO | |
| APPROVED _____ | DISAPPROVED _____ |
| 2) Reject Codes | |
| | |
| | |
| | |
| | |

| | |
|--|---|
| Were open hole logs run? | <u>X</u> yes <u> </u> no |
| Date Last log was run | <u>9/30/15</u> |
| Was CO ₂ encountered? | <u> </u> yes <u>X</u> no at what depths? _____ |
| Was H ₂ S encountered? | <u> </u> yes <u>X</u> no at what depths? _____ |
| Were unusual drilling circumstances encountered? | <u> </u> yes <u>X</u> no |
| If yes, briefly explain below | |

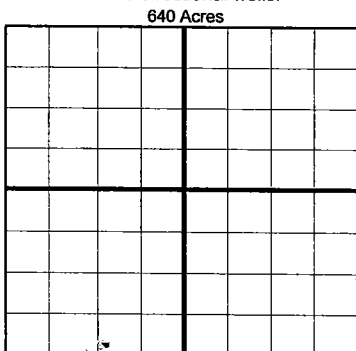
Other remarks:



If more than three drainholes are proposed, attach a separate sheet indicating the necessary information.

Direction must be stated in degrees azimuth. Please note, the horizontal drainhole and its end point must be located within the boundaries of the lease or spacing unit.

Directional surveys are required for all drainholes and directional wells.



BOTTOM HOLE LOCATION FOR DIRECTIONAL HOLE

| | | | |
|---|---------------|-------------------------------------|--|
| SEC <u>22</u> | TWP <u>8N</u> | RGE <u>2W</u> | COUNTY <u>Cleveland</u> |
| Spot Location <u>SW 1/4 NW 1/4 SW 1/4</u> | | Feet From 1/4 Sec Lines <u>2299</u> | FSL <u>2298.9</u> FWL <u>186.8</u> |
| Measured Total Depth <u>8759</u> | | True Vertical Depth <u>8675.2</u> | BHL From Lease, Unit, or Property Line: <u>186.8 187</u> |

BOTTOM HOLE LOCATION FOR HORIZONTAL HOLE: (LATERALS)

LATERAL #1

| | | | |
|--------------------------------------|-----|-------------------------|---|
| SEC | TWP | RGE | COUNTY |
| Spot Location <u>1/4 1/4 1/4 1/4</u> | | Feet From 1/4 Sec Lines | FSL FWL |
| Depth of Deviation | | Radius of Turn | Direction Total Length |
| Measured Total Depth | | True Vertical Depth | BHL From Lease, Unit, or Property Line: |

LATERAL #2

| | | | |
|--------------------------------------|-----|-------------------------|---|
| SEC | TWP | RGE | COUNTY |
| Spot Location <u>1/4 1/4 1/4 1/4</u> | | Feet From 1/4 Sec Lines | FSL FWL |
| Depth of Deviation | | Radius of Turn | Direction Total Length |
| Measured Total Depth | | True Vertical Depth | BHL From Lease, Unit, or Property Line: |

LATERAL #3

| | | | |
|--------------------------------------|-----|-------------------------|---|
| SEC | TWP | RGE | COUNTY |
| Spot Location <u>1/4 1/4 1/4 1/4</u> | | Feet From 1/4 Sec Lines | FSL FWL |
| Depth of Deviation | | Radius of Turn | Direction Total Length |
| Measured Total Depth | | True Vertical Depth | BHL From Lease, Unit, or Property Line: |