

Oklahoma Corporation Commission
Oil & Gas Conservation Division
Post Office Box 52000
Oklahoma City, Oklahoma 73152-2000
Rule 165: 10-3-25

Form 1002A

API No.: 35003232270001

Completion Report

Spud Date: August 11, 2015

OTC Prod. Unit No.: 003-218246

Drilling Finished Date: August 20, 2015

1st Prod Date: December 20, 2016

Amended

Completion Date: December 07, 2016

Amend Reason: SHOW COMPLETION

Drill Type: HORIZONTAL HOLE

Min Gas Allowable: Yes

Well Name: BARBARA ANN 28-27-12 1H

Purchaser/Measurer: CHESAPEAKE OPERATING LLC

Location: ALFALFA 28 27N 12W
SW SE SW SE
260 FSL 1835 FEL of 1/4 SEC
Derrick Elevation: 1318 Ground Elevation: 1296

First Sales Date: 12/20/2016

Operator: CHESAPEAKE OPERATING LLC 17441
PO BOX 18496
6100 N WESTERN AVE
OKLAHOMA CITY, OK 73154-0496

Completion Type		Location Exception		Increased Density	
X	Single Zone	Order No		Order No	
	Multiple Zone	639903		639902	
	Commingled				

Casing and Cement								
Type		Size	Weight	Grade	Feet	PSI	SAX	Top of CMT
SURFACE		9 5/8	36	J-55	1202		431	SURFACE
PRODUCTION		7	26	P-110EC	5860		240	3837

Liner								
Type	Size	Weight	Grade	Length	PSI	SAX	Top Depth	Bottom Depth
LINER	4 1/2	11.6	P-110HC	4761	0	475	5579	10340

Total Depth: 10342

Packer		Plug	
Depth	Brand & Type	Depth	Plug Type
5491	AS-3	There are no Plug records to display.	

Initial Test Data										
Test Date	Formation	Oil BBL/Day	Oil-Gravity (API)	Gas MCF/Day	Gas-Oil Ratio Cu FT/BBL	Water BBL/Day	Pumpin or Flowing	Initial Shut-In Pressure	Choke Size	Flow Tubing Pressure
Jan 10, 2017	MISSISSIPPIAN	191		1387	7262	2227	ARTIFICIA			153

Completion and Test Data by Producing Formation

Formation Name: MISSISSIPPIAN

Code: 359MSSP

Class: OIL

Spacing Orders

Order No	Unit Size
604606	640

Perforated Intervals

From	To
5600	10207

Acid Volumes

9,000 GALLONS HCL ACID

Fracture Treatments

43,885 BARRELS FRAC FLUID, 218,082 POUNDS PROPPANT
--

Formation	Top
MISSISSIPPIAN	5561

Were open hole logs run? No

Date last log run:

Were unusual drilling circumstances encountered? No

Explanation:

Other Remarks

OCC - THIS DOCUMENT IS ACCEPTED BASED ON THE DATA SUBMITTED THE FINAL LOCATION EXCEPTION HAS NO BEEN ISSUED.

Lateral Holes

Sec: 28 TWP: 27N RGE: 12W County: ALFALFA

NW NW NW NE

176 FNL 2635 FEL of 1/4 SEC

Depth of Deviation: 5111 Radius of Turn: 382 Direction: 360 Total Length: 4781

Measured Total Depth: 10342 True Vertical Depth: 5493 End Pt. Location From Release, Unit or Property Line: 176

FOR COMMISSION USE ONLY

1135712

Status: Accepted

API NO. 35-003-23227
OTC PROD. UNIT NO. 003-218246

PLEASE TYPE OR USE BLACK INK ONLY
NOTE: Attach copy of original 1002A if recompletion or reentry.

OKLAHOMA CORPORATION COMMISSION
Oil & Gas Conservation Division
Post Office Box 52000
Oklahoma City, Oklahoma 73152-2000
Rule 165:10-3-25

RECEIVED
Form 1002A
Rev. 2009

JAN 19 2017

ORIGINAL
AMENDED
Reason Amended Show Completion
TYPE OF DRILLING OPERATION
STRAIGHT HOLE DIRECTIONAL HOLE HORIZONTAL HOLE
If directional or horizontal, see reverse for bottom hole location.

COMPLETION REPORT

COUNTY ALFALFA SEC 28 TWP 27N RGE 12W
LEASE NAME BARBARA ANN 28-27-12 WELL NO. 1H
SW 1/4 SE 1/4 SW 1/4 SE 1/4 260 1/4 SEC 1,835
ELEVATION Derrick FI 1,318 Ground 1,296
OPERATOR NAME CHESAPEAKE OPERATING, L.L.C. OTC/OCC OPERATOR NO. 17441
ADDRESS P.O. BOX 18496
CITY OKLAHOMA CITY STATE OK ZIP 73154

OKLAHOMA CORPORATION COMMISSION
640 Acres
LOCATE WELL

COMPLETION TYPE

SINGLE ZONE
MULTIPLE ZONE
Application Date
COMMINGLED
Application Date
LOCATION EXCEPTION ORDER NO. 639903 (INTERIM)
INCREASED DENSITY ORDER NO. 639902

CASING & CEMENT (Form 1002C must be attached)

TYPE	SIZE	WEIGHT	GRADE	FEET	PSI	SAX	TOP
CONDUCTOR							
SURFACE	9 5/8"	36#	J-55	1,202		431	SURFACE
INTERMEDIATE							
PRODUCTION	7"	26#	P-110EC	5,860		240	3,837
LINER	4 1/2"	11.6#	P-110HC	5,579-10,340		475	5,579
							10,342

PACKER @ 5,491 BRAND & TYPE AS-3
PACKER @ BRAND & TYPE

PLUG @ TYPE PLUG @ TYPE
PLUG @ TYPE PLUG @ TYPE

TOTAL DEPTH 10,342

COMPLETION & TEST DATA BY PRODUCING FORMATION

359MSSP

FORMATION Mississippi
SPACING & SPACING 640
ORDER NUMBER 604606
CLASS: Oil, Gas, Dry, Inj. Oil
Disp, Comm Disp, Svc
PERFORATED INTERVALS 5600 - 10,207
ACID/VOLUME HCL Acid 9000 Gals
Frac Fluid 43,885 Bbls
FRACTURE TREATMENT (Fluids/Prop Amounts) Proppant 218,082 Lbs

Reported to Frac Focus

Minimum Gas Allowable (165:10-17-7) Gas Purchaser/Measurer Chesapeake Operating, L.L.C.
OR 1st Sales Date 12/20/2016
Oil Allowable (165:10-13-3)

INITIAL TEST DATA

INITIAL TEST DATE 1/10/2017
OIL-BBL/DAY 191
OIL-GRAVITY (API)
GAS-MCF/DAY 1,387
GAS-OIL RATIO CU FT/BBL 7,262
WATER-BBL/DAY 2227
PUMPING OR FLOWING Artificial Lift
INITIAL SHUT-IN PRESSURE
CHOKE SIZE
FLOW TUBING PRESSURE 153

AS SUBMITTED

A record of the formations drilled through, and pertinent remarks are presented on the reverse. I declare that I have knowledge of the contents of this report and am authorized by my organization to make this report, which was prepared by me or under my supervision and direction, with the data and facts stated herein to be true, correct, and complete to the best of my knowledge and belief.

Sara Everett
SIGNATURE NAME (PRINT OR TYPE) Sara Everett, Regulatory Analyst
P.O. BOX 18496 OKLAHOMA CITY OK 73154
ADDRESS CITY STATE ZIP
1/18/2017 405-848-8000
DATE PHONE NUMBER
sara.everett@chk.com
EMAIL ADDRESS

Give formation names and tops, if available, or descriptions and thickness of formations drilled through. Show intervals cored or drillstem tested.

WELL NO. 1H

NAMES OF FORMATIONS	TOP
MISSISSIPPIAN	5,561

FOR COMMISSION USE ONLY	
ITD on file	<input type="checkbox"/> YES <input type="checkbox"/> NO
APPROVED	DISAPPROVED
<div>2) Reject Codes</div> <div> <div></div> <div></div> <div></div> <div></div> <div></div> </div>	

Were open hole logs run?	yes	<u>X</u>	no
Date Last log was run	N/A		
Was CO ₂ encountered?	yes	<u>X</u>	no at what depths?
Was H ₂ S encountered?	yes	<u>X</u>	no at what depths?
Were unusual drilling circumstances encountered?	<u> </u> yes <u>X</u> no		
If yes, briefly explain.			

Other remarks:

If more than three drainholes are proposed, attach a separate sheet indicating the necessary information.

Direction must be stated in degrees azimuth.
Please note, the horizontal drainhole and its end
point must be located within the boundaries of the
lease or spacing unit.

Directional surveys are required for all drainholes and directional wells.

SEC	TWP	RGE	COUNTY
Spot Location			
1/4	1/4	1/4	1/4
Measured Total Depth	True Vertical Depth	Feet From 1/4 Sec Lines	FSL
		FWL	
		BHL From Lease, Unit, or Property Line:	

BOTTOM HOLE LOCATION FOR HORIZONTAL HOLE: (LATERALS)										
LATERAL #1										
SEC	28	TWP	27N	RGE	12W	COUNTY				
						ALFALFA				
Spot Location						Feet From 1/4 Sec Lines	FNL	176	FEL	2,635
NW 1/4		NW 1/4		NW 1/4		NE 1/4				
Depth of Deviation		5,111		Radius of Turn		382		Direction	360	
Measured Total Depth		10.342		True Vertical Depth		5.493		BHL From Lease, Unit, or Property Line:		
								176		

SEC	TWP	RGE	COUNTY			
Spot Location				Feet From 1/4 Sec Lines	FSL	FWL
1/4	1/4	1/4	1/4			
Depth of Deviation		Radius of Turn	Direction	Total Length		
Measured Total Depth		True Vertical Depth	BHL From Lease, Unit, or Property Line:			

SEC	TWP	RGE	COUNTY			
Spot Location				Feet From 1/4 Sec Lines	FSL	FWL
1/4	1/4	1/4	1/4			
Depth of Deviation		Radius of Turn	Direction	Total Length		
Measured Total Depth		True Vertical Depth	BHL From Lease, Unit, or Property Line:			

TOPOGRAPHIC LAND SURVEYORS OF OKLAHOMA

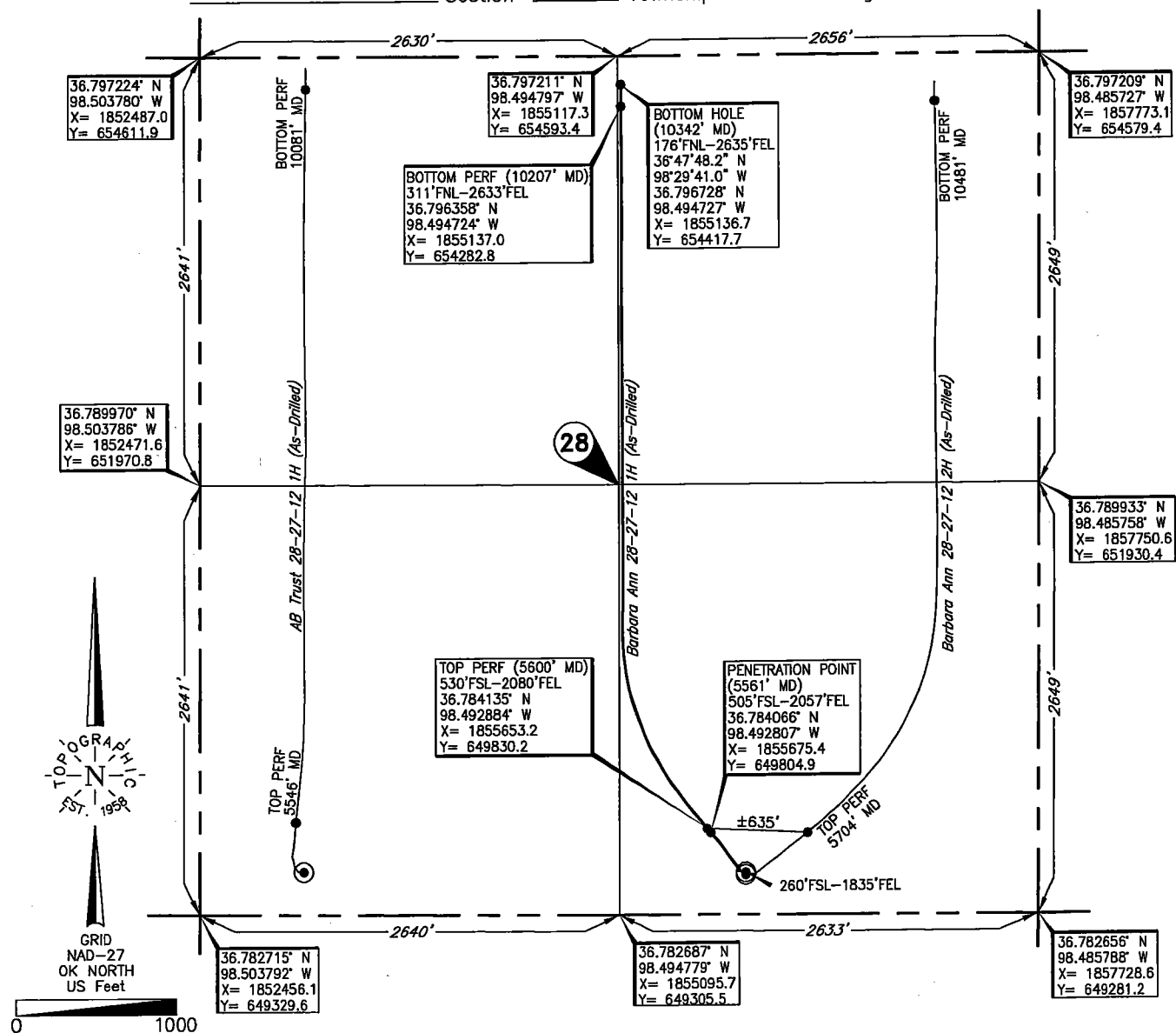
6709 NORTH CLASSEN BLVD., OKLA. CITY, OKLA. 73116 * LOCAL (405) 843-4847 * OUT OF STATE (800) 654-3219

Certificate of Authorization No. 1293 L.S.

ALFALFA

County, Oklahoma

260°FSL-1835°FEL Section 28 Township 27N Range 12W I.M.



Operator: CHESAPEAKE OPERATING, L.L.C.

Lease Name: BARBARA ANN 28-27-12

Well No.: 1H

ELEVATION:

1296' Gr. at Level Pad

Topography & Vegetation Loc. fell on level pad, ±215' North of SWD Line, ±221' North of power line

Good Drill Site? Yes Reference Stakes or Alternate Location Stakes Set None

Best Accessibility to Location From South off county road

Distance & Direction from Hwy Jct or Town From Ingersoll, Ok, go ±5.2 miles West on US. Hwy. 64, then ±1 mile South to the SE Cor. of Sec. 28-T27N-R12W

This information was gathered with a GPS receiver with ±1 foot Horiz./Vert. accuracy.

DATUM: NAD-27
 LAT: 36°47'00.2" N
 LONG: 98°29'31.4" W
 LAT: 36.783392° N
 LONG: 98.492051° W
 STATE PLANE
 COORDINATES: (US Feet)
 ZONE: OK NORTH
 X: 1855895.8
 Y: 649558.2

269174 Date of Drawing: Dec. 19, 2016
 Invoice # 241505A Date Staked: Mar. 11, 2015 JP

FINAL AS-DRILLED PLAT

AS-DRILLED INFORMATION
 FURNISHED BY CHESAPEAKE OPERATING, L.L.C.