

Oklahoma Corporation Commission
Oil & Gas Conservation Division
Post Office Box 52000
Oklahoma City, Oklahoma 73152-2000
Rule 165: 10-3-25

Form 1002A

API No.: 35151243550001

Completion Report

Spud Date: March 03, 2015

OTC Prod. Unit No.: 151-218224

Drilling Finished Date: March 18, 2015

1st Prod Date: December 16, 2016

Amended

Completion Date: November 12, 2016

Amend Reason: SHOW COMPLETION

Drill Type: HORIZONTAL HOLE

Min Gas Allowable: Yes

Well Name: IRENE B 2-28-17 2H

Purchaser/Measurer: CHESAPEAKE OPERATING LLC

First Sales Date: 12/16/2016

Location: WOODS 2 28N 17W
W2 NW NW NE
330 FNL 2550 FEL of 1/4 SEC
Derrick Elevation: 1853 Ground Elevation: 1831

Operator: CHESAPEAKE OPERATING LLC 17441
PO BOX 18496
6100 N WESTERN AVE
OKLAHOMA CITY, OK 73154-0496

Completion Type		Location Exception		Increased Density	
X	Single Zone	Order No		Order No	
	Multiple Zone	632551		632549	
	Commingle				

Casing and Cement							
Type	Size	Weight	Grade	Feet	PSI	SAX	Top of CMT
SURFACE	13 3/8	48	J-55	495		300	SURFACE
INTERMEDIATE	9 5/8	36	J-55	1217		295	SURFACE
PRODUCTION	7	26	P-110EC	5775		217	4115

Liner								
Type	Size	Weight	Grade	Length	PSI	SAX	Top Depth	Bottom Depth
LINER	4 1/2	11.6	P-110EC	4944	0	570	5521	10465

Total Depth: 10465

Packer	
Depth	Brand & Type
5447	AS-3

Plug	
Depth	Plug Type
There are no Plug records to display.	

Initial Test Data

Test Date	Formation	Oil BBL/Day	Oil-Gravity (API)	Gas MCF/Day	Gas-Oil Ratio Cu FT/BBL	Water BBL/Day	Pumpin or Flowing	Initial Shut-In Pressure	Choke Size	Flow Tubing Pressure
Jan 08, 2017	MISSISSIPPI	303		431	1422	966	ARTIFICIA			162

Completion and Test Data by Producing Formation			
Formation Name: MISSISSIPPI		Code: 351MISS	
		Class: OIL	

Spacing Orders	
Order No	Unit Size
128274	640

Perforated Intervals	
From	To
5648	10321

Acid Volumes
9,000 GALLONS HCL ACID

Fracture Treatments
43,299 BARRELS FRAC FLUID

Formation	Top
MISSISSIPPI	5616

Were open hole logs run? No

Date last log run:

Were unusual drilling circumstances encountered? No

Explanation:

Other Remarks
OCC - THIS DOCUMENT IS ACCEPTED BASED ON THE DATA SUBMITTED THE FINAL LOCATION EXCEPTION HAS NOT BEEN ISSUED.

Lateral Holes
Sec: 2 TWP: 28N RGE: 17W County: WOODS SE SW SE SE 176 FSL 921 FEL of 1/4 SEC Depth of Deviation: 5081 Radius of Turn: 435 Direction: 171 Total Length: 4849 Measured Total Depth: 10465 True Vertical Depth: 5516 End Pt. Location From Release, Unit or Property Line: 176

FOR COMMISSION USE ONLY	
Status: Accepted	1135711

Give formation names and tops, if available, or descriptions and thickness of formations drilled through. Show intervals cored or drillstem tested.

WELL NO. 2H

NAMES OF FORMATIONS	TOP
MISSISSIPPI	5,616

FOR COMMISSION USE ONLY	
ITD on file	<input type="checkbox"/> YES <input type="checkbox"/> NO
APPROVED	DISAPPROVED
<div>2) Reject Codes</div> <div> <div></div> <div></div> <div></div> <div></div> <div></div> </div>	

Were open hole logs run?	<u> </u> yes	<u>X</u> no
Date Last log was run	N/A	
Was CO ₂ encountered?	<u> </u> yes	<u>X</u> no at what depths?
Was H ₂ S encountered?	<u> </u> yes	<u>X</u> no at what depths?
Were unusual drilling circumstances encountered?	<u> </u> yes	<u>X</u> no
If yes, briefly explain.		

Other remarks:

640 Acres

If more than three drainholes are proposed, attach a separate sheet indicating the necessary information.

Direction must be stated in degrees azimuth.
Please note, the horizontal drainhole and its end
point must be located within the boundaries of the
lease or spacing unit.

Directional surveys are required for all drainholes and directional wells.

SEC	TWP	RGE	COUNTY
Spot Location	1/4	1/4	1/4
Measured Total Depth	True Vertical Depth	BHL From Lease, Unit, or Property Line:	

LATERAL #1										
SEC	2	TWP	28N	RGE	17W	COUNTY				WOODS
Spot Location						Feet From 1/4 Sec Lines	FSL	176	FEL	921
SE 1/4		SW 1/4		SE 1/4		SE 1/4				
Depth of Deviation		5,081		Radius of Turn		435		Direction		171
Measured Total Depth		10,465		True Vertical Depth		5,516		BHL From Lease, Unit, or Property Line:		176

SEC	TWP	RGE	COUNTY			
Spot Location				Feet From 1/4 Sec Lines	FSL	FWL
1/4	1/4	1/4	1/4			
Depth of Deviation		Radius of Turn	Direction	Total Length		
Measured Total Depth		True Vertical Depth	BHL From Lease, Unit, or Property Line:			

SEC	TWP	RGE	COUNTY				
Spot Location				Feet From 1/4 Sec Lines		FSL	FWL
1/4	1/4	1/4	1/4				
Depth of Deviation		Radius of Turn		Direction		Total Length	
Measured Total Depth		True Vertical Depth		BHL From Lease, Unit, or Property Line:			

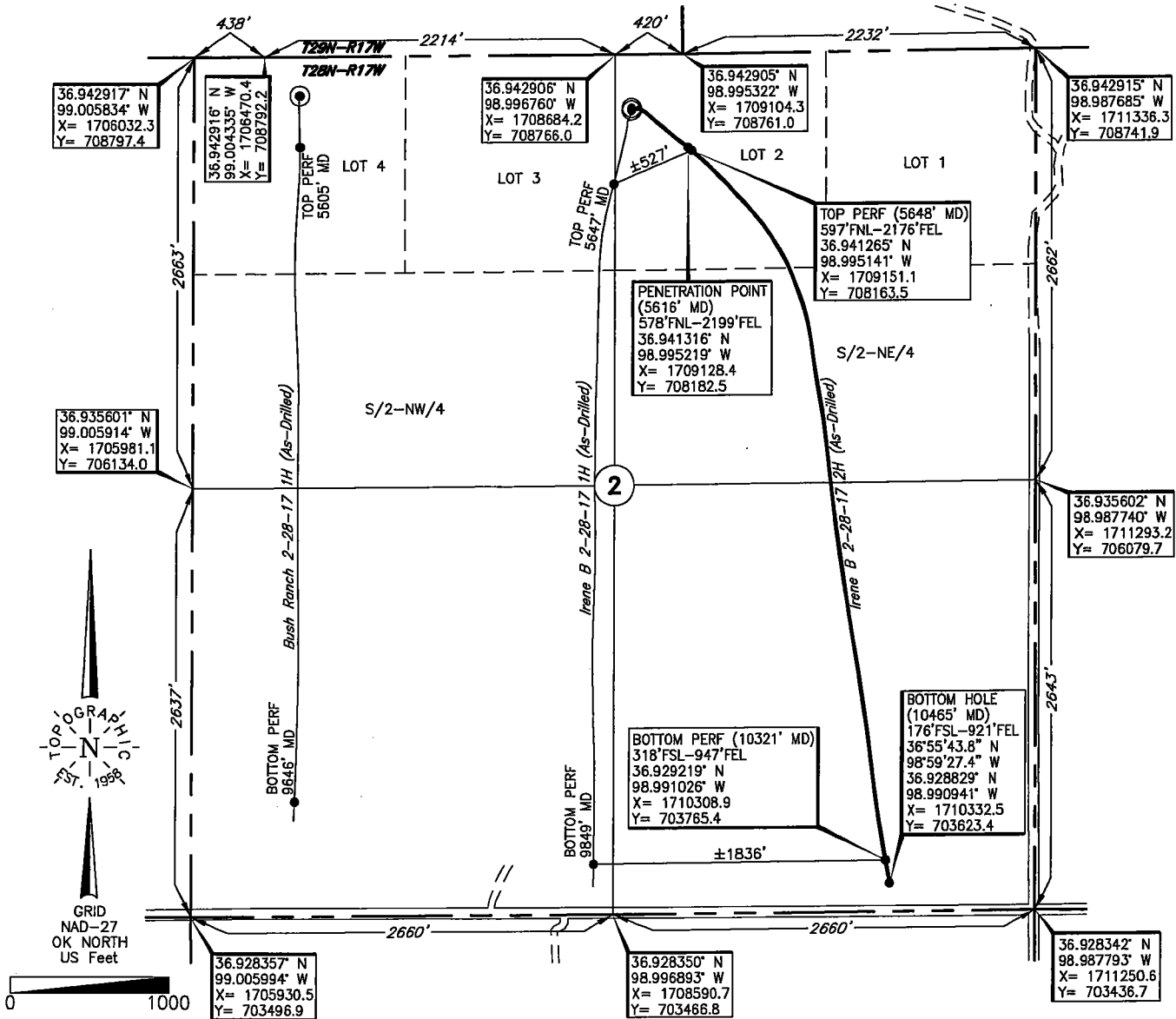
TOPOGRAPHIC LAND SURVEYORS OF OKLAHOMA

6709 NORTH CLASSEN BLVD., OKLA. CITY, OKLA. 73116 * LOCAL (405) 843-4847 * OUT OF STATE (800) 654-3219
Certificate of Authorization No. 1293.

WOODS

County, Oklahoma

330'FNL-2550'FEL Section 2 Township 28N Range 17W I.M.



Operator: CHESAPEAKE OPERATING, LLC

Lease Name: IRENE B 2-28-17

Well No.: 2H

ELEVATION:

1831' Gr. at Level Pad

Topography & Vegetation Loc. fell on level pad, $\pm 186'$ SE of NE-SW pipeline

Good Drill Site? Yes

Reference Stakes or Alternate Location
Stakes Set None

Best Accessibility to Location From North off lease road

Distance & Direction

from Hwy Jct or Town From US. Hwy. 64 E-W & St. Hwy. 14 South, West of Alva, Ok, go

± 6 miles West on US. Hwy. 64, then $\pm 10'$ miles North to the NE Cor. of Sec. 2-T28N-R17W

This information was gathered with a GPS receiver with ± 1 foot Horiz./Vert. accuracy.

DATUM: NAD-27
LAT: $36^{\circ}56'31.2''$ N
LONG: $98^{\circ}59'47.1''$ W
LAT: 36.942000° N
LONG: 98.996417° W
STATE PLANE
COORDINATES: (US Feet)
ZONE: OK NORTH
X: 1708781.0
Y: 708434.8

268603 Date of Drawing: Nov. 30, 2016
Invoice # 229137A Date Staked: Aug. 21, 2014

JP

FINAL AS-DRILLED PLAT

AS-DRILLED INFORMATION
FURNISHED BY CHESAPEAKE OPERATING, L.L.C.