

Oklahoma Corporation Commission
Oil & Gas Conservation Division
Post Office Box 52000
Oklahoma City, Oklahoma 73152-2000
Rule 165: 10-3-25

Form 1002A

API No.: 35151243540001

Completion Report

Spud Date: March 05, 2015

OTC Prod. Unit No.: 151-218219

Drilling Finished Date: March 28, 2015

1st Prod Date: December 16, 2016

Amended

Completion Date: November 10, 2016

Amend Reason: SHOW COMPLETION

Drill Type: HORIZONTAL HOLE

Min Gas Allowable: Yes

Well Name: IRENE B 2-28-17 1H

Purchaser/Measurer: CHESAPEAKE OPERATING LLC

Location: WOODS 2 28N 17W
SW NW NW NE
345 FNL 2550 FEL of 1/4 SEC
Derrick Elevation: 1853 Ground Elevation: 1831

First Sales Date: 12/16/2016

Operator: CHESAPEAKE OPERATING LLC 17441
PO BOX 18496
6100 N WESTERN AVE
OKLAHOMA CITY, OK 73154-0496

Completion Type		Location Exception		Increased Density	
X	Single Zone	Order No		Order No	
	Multiple Zone	632550		632549	
	Commingle				

Casing and Cement							
Type	Size	Weight	Grade	Feet	PSI	SAX	Top of CMT
SURFACE	13 3/8	48	J-55	465		300	SURFACE
INTERMEDIATE	9 5/8	36	J-55	1207		542	25
PRODUCTION	7	26	P-110EC	5792		218	4191

Liner								
Type	Size	Weight	Grade	Length	PSI	SAX	Top Depth	Bottom Depth
LINER	4 1/2	11.6	P-110EC	4508	0	515	5477	9985

Total Depth: 9985

Packer	
Depth	Brand & Type
5420	AS-3

Plug	
Depth	Plug Type
There are no Plug records to display.	

Initial Test Data

Test Date	Formation	Oil BBL/Day	Oil-Gravity (API)	Gas MCF/Day	Gas-Oil Ratio Cu FT/BBL	Water BBL/Day	Pumpin or Flowing	Initial Shut-In Pressure	Choke Size	Flow Tubing Pressure
Jan 08, 2017	MISSISSIPPI	216		547	2532	541	ARTIFICIA			161

Completion and Test Data by Producing Formation									
Formation Name: MISSISSIPPI				Code: 351MISS			Class: OIL		
Spacing Orders				Perforated Intervals					
Order No		Unit Size		From			To		
128274		640		5647			9849		
Acid Volumes				Fracture Treatments					
8,000 GALLONS HCL ACID				38,222 BARRELS FRAC FLUID					

Formation	Top
MISSISSIPPI	5595

Were open hole logs run? No

Date last log run:

Were unusual drilling circumstances encountered? No

Explanation:

Other Remarks
OCC - THIS DOCUMENT IS ACCEPTED BASED ON THE DATA SUBMITTED THE FINAL LOCATION EXCEPTION HAS NOT BEEN ISSUED.

Lateral Holes
Sec: 2 TWP: 28N RGE: 17W County: WOODS SE SE SE SW 175 FSL 2536 FWL of 1/4 SEC Depth of Deviation: 5081 Radius of Turn: 421 Direction: 181 Total Length: 4390 Measured Total Depth: 9985 True Vertical Depth: 5502 End Pt. Location From Release, Unit or Property Line: 175

FOR COMMISSION USE ONLY
<div>Status: Accepted</div> <div>1135710</div>

PLEASE TYPE OR USE BLACK INK ONLY

NOTE:
Attach copy of original 1002A if recompletion or reentry.

Oklahoma City, Oklahoma 73152-2000
Rule 165:10-3-25

JAN 17 2017

OKLAHOMA CORPORATION
COMMISSION

COMPLETION REPORT

TYPE OF DRILLING OPERATION
☐ STRAIGHT HOLE ☐ DIRECTIONAL HOLE ☒ HORIZONTAL HOLE
☐ SERVICE WELL

If directional or horizontal, see reverse for bottom hole location.

COMPLETION TYPE

X	SINGLE ZONE	
	MULTIPLE ZONE Application Date	
	COMMINGLED Application Date	
LOCATION EXCEPTION ORDER NO.		632550 (INTERIM)
INCREASED DENSITY ORDER NO.		632549

CASING & CEMENT (Form 1002C must be attached)

TYPE	SIZE	WEIGHT	GRADE	FEET	PSI	SAX	TOP
CONDUCTOR							
SURFACE	13 3/8"	48#	J-55	465		300	SURFACE
INTERMEDIATE	9 5/8"	36#	J-55	1,207		542	25
PRODUCTION	7"	26#	P-110EC	5,792		218	4,191
LINER	4 1/2"	11.6#	P-110EC	5,477-9,985		515	5,485
G @ TYPE	PLUG @	TYPE	TOTAL DEPTH				
							9,985

PACKER @ 5,420 BRAND & TYPE AS-3
PACKER @ _____ BRAND & TYPE _____

PLUG @ _____ TYPE _____ PLUG @ _____ TYPE _____
 PLUG @ _____ TYPE _____ PLUG @ _____ TYPE _____

TOTAL DEPTH

COMPLETION & TEST DATA BY PRODUCING FORMATION

FORMATION	Mississippi					Reported to Frac Focus
SPACING & SPACING	640					
ORDER NUMBER	128274					
CLASS: Oil, Gas, Dry, Inj. Disp, Comm Disp, Svc	Oil					
PERFORATED INTERVALS	5647 - 9849					
ACID/VOLUME	HCL Acid 8000 Gals Frac Fluid 38,222 Bbls					
FRACTURE TREATMENT (Fluids/Prop Amounts)						

☒ Minimum Gas Allowable (165:10-17-7)
 OR
☐ Oil Allowable (165:10-13-3)

Gas Purchaser/Measurer	<u>Chesapeake Operating, L.L.C.</u>
1st Sales Date	12/16/2016

INITIAL TEST DATA

INITIAL TEST DATE	1/8/2017								
OIL-BBL/DAY	216								
OIL-GRAVITY (API)									
GAS-MCF/DAY	547								
GAS-OIL RATIO CU FT/BBL	2,532								
WATER-BBL/DAY	541								
PUMPING OR FLOWING	Artificial Lift								
INITIAL SHUT-IN PRESSURE									
CHOKE SIZE									
FLOW TUBING PRESSURE	161								

A record of the formations drilled through, and pertinent remarks are presented on the reverse. I declare that I have knowledge of the contents of this report and am authorized by my organization to make this report, which was prepared by me or under my supervision and direction, with the data and facts stated herein to be true, correct, and complete to the best of my knowledge and belief.

3a Event

Sara Everett, Regulatory Analyst

1/12/2017

405-848-8000

SIGNATURE

OKLAHOMA CITY

NAME (PRINT OR TYPE)

73154

sara.everett@chk.com

EMAIL ADDRESS

Give formation names and tops, if available, or descriptions and thickness of formations drilled through. Show intervals cored or drillstem tested.

WELL NO. 1H

NAMES OF FORMATIONS	TOP
MISSISSIPPI	5,595

FOR COMMISSION USE ONLY	
ITD on file	<input type="checkbox"/> YES <input type="checkbox"/> NO
APPROVED	DISAPPROVED
<div>2) Reject Codes</div> <div> <div></div> <div></div> <div></div> <div></div> <div></div> </div>	

Were open hole logs run?	<u> </u> yes <u>X</u> no
Date Last log was run	N/A
Was CO ₂ encountered?	<u> </u> yes <u>X</u> no at what depths?
Was H ₂ S encountered?	<u> </u> yes <u>X</u> no at what depths?
Were unusual drilling circumstances encountered?	<u> </u> yes <u>X</u> no
If yes, briefly explain.	

Other remarks:

640 Acres

If more than three drainholes are proposed, attach a separate sheet indicating the necessary information.

Direction must be stated in degrees azimuth.
Please note, the horizontal drainhole and its end point must be located within the boundaries of the lease or spacing unit.

Directional surveys are required for all drainholes and directional wells.

SEC	TWP	RGE	COUNTY
Spot Location			
1/4	1/4	1/4	1/4
Measured Total Depth		True Vertical Depth	Feet From 1/4 Sec Lines
			FSL
			FWL
BHL From Lease, Unit, or Property Line:			

BOTTOM HOLE LOCATION FOR HORIZONTAL HOLE: (LATERS), LATERAL #1										
SEC	TWP		RGE	COUNTY						
2	28N		17W	WOODS						
Spot Location				Feet From 1/4 Sec Lines		FSL	175	FWL		2,536
SE 1/4		SE 1/4		SE 1/4		SW 1/4				
Depth of Deviation			Radius of Turn		Direction		Total Length			
5,081			421		181		4,390			
Measured Total Depth			True Vertical Depth		BHL From Lease, Unit, or Property Line:					
9.985			5.502		175					

SEC	TWP	RGE	COUNTY			
Spot Location				Feet From 1/4 Sec Lines	FSL	FWL
1/4	1/4	1/4	1/4			
Depth of Deviation		Radius of Turn	Direction	Total Length		
Measured Total Depth		True Vertical Depth	BHL From Lease, Unit, or Property Line:			

SEC	TWP	RGE	COUNTY			
Spot Location				Feet From 1/4 Sec Lines	FSL	FWL
1/4	1/4	1/4	1/4			
Depth of Deviation		Radius of Turn		Direction	Total Length	
Measured Total Depth		True Vertical Depth		BHL From Lease, Unit, or Property Line:		

TOPOGRAPHIC LAND SURVEYORS OF OKLAHOMA

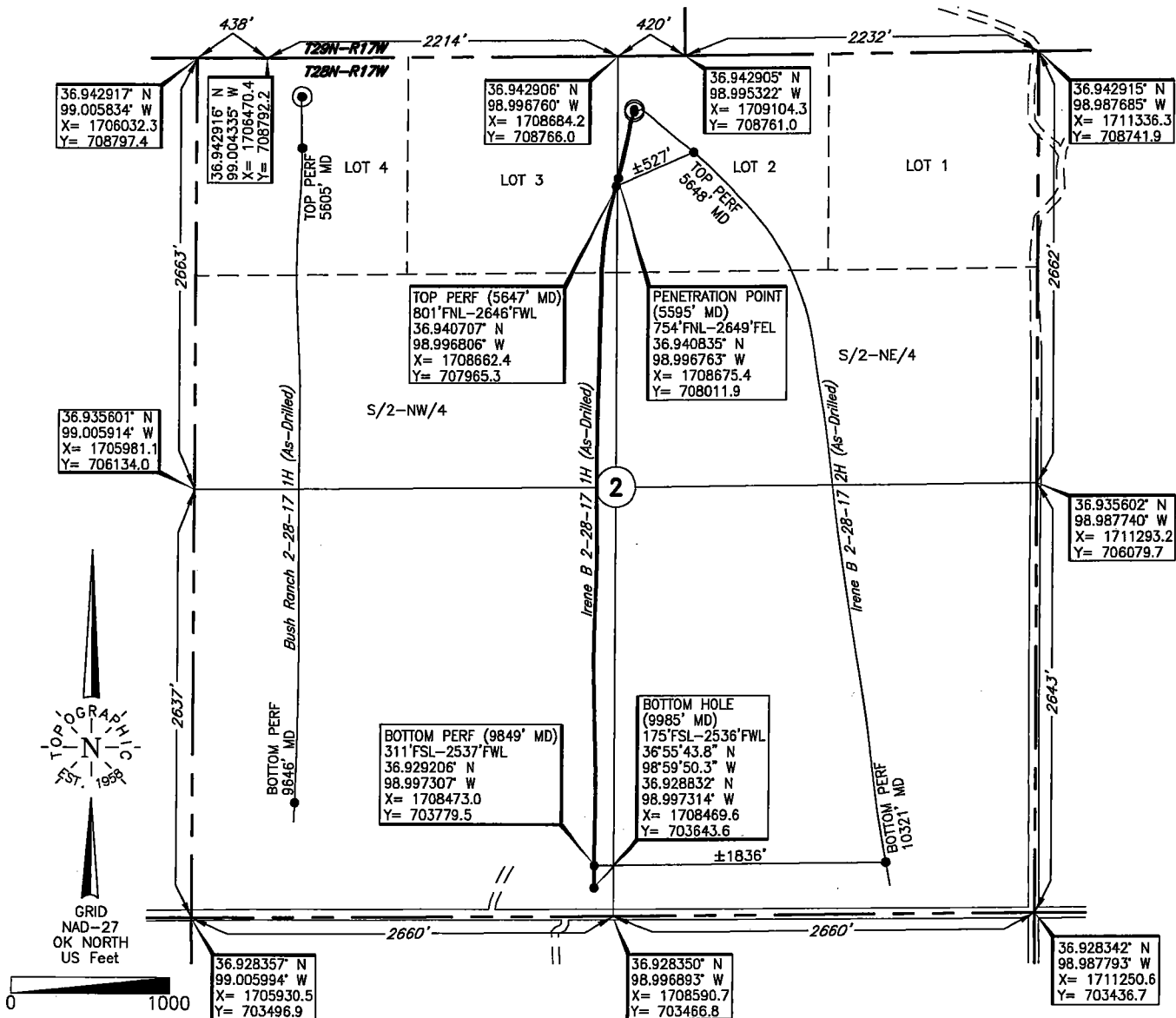
6709 NORTH CLASSEN BLVD., OKLA. CITY, OKLA. 73116 * LOCAL (405) 843-4847 * OUT OF STATE (800) 654-3219

Certificate of Authorization No. 1293.

WOODS

County, Oklahoma

345'FNL-2550'FEL Section 2 Township 28N Range 17W I.M.



Operator: CHESAPEAKE OPERATING, LLC

Lease Name: IRENE B 2-28-17

Well No.: 1H

ELEVATION:

1831' Gr. at Level Pad

Topography & Vegetation Loc. fell on level pad, ±196' SE of NE-SW pipeline

Good Drill Site? Yes

Reference Stakes or Alternate Location
Stakes Set None

Best Accessibility to Location From North off lease road

Distance & Direction

from Hwy Jct or Town From US. Hwy. 64 E-W & St. Hwy. 14 South, West of Alva, Ok, go

±6 miles West on US. Hwy. 64, then ±10' miles North to the NE Cor. of Sec. 2-T28N-R17W

This information was gathered with a GPS receiver with ±1 foot Horiz./Vert. accuracy

DATUM: NAD-27
LAT: 36°56'31.0" N
LONG: 98°59'47.1" W
LAT: 36.941958° N
LONG: 98.996417° W
STATE PLANE
COORDINATES: (US Feet)
ZONE: OK NORTH
X: 1708780.7
Y: 708419.8

268600 Date of Drawing: Nov. 30, 2016
Invoice # 229137 Date Staked: Aug. 21, 2014 JP

FINAL AS-DRILLED PLAT

AS-DRILLED INFORMATION
FURNISHED BY CHESAPEAKE OPERATING, L.L.C.