

Oklahoma Corporation Commission
Oil & Gas Conservation Division
Post Office Box 52000
Oklahoma City, Oklahoma 73152-2000
Rule 165: 10-3-25

Form 1002A

API No.: 35003232070001

Completion Report

Spud Date: May 19, 2015

OTC Prod. Unit No.: 003-218206

Drilling Finished Date: June 24, 2015

Amended

1st Prod Date: December 14, 2016

Amend Reason: SHOW COMPLETION

Completion Date: December 04, 2016

Drill Type: HORIZONTAL HOLE

Min Gas Allowable: Yes

Well Name: KLETKE 18-27-12 1H

Purchaser/Measurer: CHESAPEAKE OPERATING LLC

Location: ALFALFA 18 27N 12W
SW SW SW SE
265 FSL 2450 FEL of 1/4 SEC
Derrick Elevation: 1300 Ground Elevation: 1278

First Sales Date: 12/14/2016

Operator: CHESAPEAKE OPERATING LLC 17441
PO BOX 18496
6100 N WESTERN AVE
OKLAHOMA CITY, OK 73154-0496

Completion Type		Location Exception		Increased Density	
X	Single Zone	Order No		Order No	
	Multiple Zone	660496		639190	
	Commingle				

Casing and Cement							
Type	Size	Weight	Grade	Feet	PSI	SAX	Top of CMT
SURFACE	13 3/8	48	J-55	523		460	SURFACE
INTERMEDIATE	9 5/8	36	J-55	1202		360	SURFACE
PRODUCTION	7	26	P-110EC	5704		230	3315

Liner								
Type	Size	Weight	Grade	Length	PSI	SAX	Top Depth	Bottom Depth
LINER	4 1/2	11.6	P-110EC	5054	0	440	5479	10533

Total Depth: 10535

Packer	
Depth	Brand & Type
5405	AS-3

Plug	
Depth	Plug Type
There are no Plug records to display.	

Initial Test Data

Test Date	Formation	Oil BBL/Day	Oil-Gravity (API)	Gas MCF/Day	Gas-Oil Ratio Cu FT/BBL	Water BBL/Day	Pumpin or Flowing	Initial Shut-In Pressure	Choke Size	Flow Tubing Pressure
Jan 07, 2017	MISSISSIPPIAN	226		2082	9212	2292	ARTIFICIA			195

Completion and Test Data by Producing Formation					
Formation Name: MISSISSIPPIAN		Code: 359MSSP		Class: OIL	
Spacing Orders		Perforated Intervals			
Order No	Unit Size	From		To	
98259	640	5589		10400	
Acid Volumes		Fracture Treatments			
9,000 GALLONS HCL ACID		43,486 BARRELS FRAC FLUID, 217,080 POUNDS PROPPANT			

Formation	Top
MISSISSIPPIAN	5536

Were open hole logs run? No

Date last log run:

Were unusual drilling circumstances encountered? No

Explanation:

Other Remarks
There are no Other Remarks.

Lateral Holes
Sec: 18 TWP: 27N RGE: 12W County: ALFALFA NE NE NW NW 177 FNL 1052 FWL of 1/4 SEC Depth of Deviation: 4990 Radius of Turn: 403 Direction: 352 Total Length: 4999 Measured Total Depth: 10535 True Vertical Depth: 5393 End Pt. Location From Release, Unit or Property Line: 177

FOR COMMISSION USE ONLY	
Status: Accepted	1135708

API
NO. 35-003-23207
OTC PROD.
UNIT NO. 003-218206

PLEASE TYPE OR USE BLACK INK ONLY

NOTE:

Attach copy of original 1002A if recompletion or reentry.

OKLAHOMA CORPORATION COMMISSION

Oil & Gas Conservation Division

Post Office Box 52000

Oklahoma City, Oklahoma 73152-2000

Rule 165:10-3-25

RECEIVED
Form 1002A
Rev. 2009

JAN 17 2017

OKLAHOMA CORPORATION
COMMISSION

☐ ORIGINAL
☒ AMENDED

Reason Amended Show Completion

TYPE OF DRILLING OPERATION

☐ STRAIGHT HOLE
☐ SERVICE WELL

☐ DIRECTIONAL HOLE

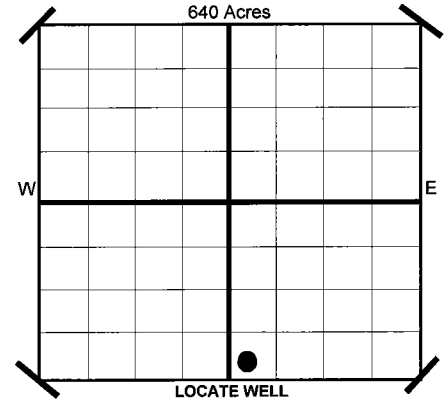
☒ HORIZONTAL HOLE

If directional or horizontal, see reverse for bottom hole location.

COUNTY	ALFALFA	SEC	18	TWP	27N	RGE	12W
LEASE	KLETKE 18-27-12						
NAME	1H						
SHL	SW 1/4	SW 1/4	SW 1/4	SE 1/4	265	FSL	1/4 SEC
ELEVATION	2,450						
Derrick FI	1,300	Ground	1,278	Latitude (if Known)			
OPERATOR	CHESAPEAKE OPERATING, L.L.C.					OTC/OCC OPERATOR NO.	17441
NAME							
ADDRESS	P.O. BOX 18496						
CITY	OKLAHOMA CITY		STATE	OK		ZIP	73154

COMPLETION REPORT

SPUD DATE 5/19/2015
DRLG FINISHED DATE 6/24/2015
DATE OF WELL COMPLETION 12/4/2016
1ST PROD DATE 12/14/2016
RECOMP DATE
Longitude (if Known)



COMPLETION TYPE

<input checked="" type="checkbox"/> SINGLE ZONE
<input type="checkbox"/> MULTIPLE ZONE
Application Date
COMMINGLED
Application Date
LOCATION
EXCEPTION ORDER NO. 639191 (INTERIM)
INCREASED DENSITY
ORDER NO. 639190

CASING & CEMENT (Form 1002C must be attached)

TYPE	SIZE	WEIGHT	GRADE	FEET	PSI	SAX	TOP
CONDUCTOR							
SURFACE	13 3/8"	48#	J-55	523		460	SURFACE
INTERMEDIATE	9 5/8"	36#	J-55	1,202		360	SURFACE
PRODUCTION	7"	26#	P-110EC	5,704		230	3,315
LINER	4 1/2"	11.6#	P-110EC	5,479-10,533		440	5,479
							10,535

PACKER @ 5,405 BRAND & TYPE AS-3

PLUG @ TYPE PLUG @ TYPE PLUG @ TYPE

TOTAL DEPTH

COMPLETION & TEST DATA BY PRODUCING FORMATION

FORMATION	Mississippian
SPACING & SPACING	640
ORDER NUMBER	98259
CLASS: Oil, Gas, Dry, Inj.	Oil
Disp, Comm Disp, Svc	
PERFORATED INTERVALS	5589 - 10,400
ACID/VOLUME	HCL Acid 9000 Gals
FRACTURE TREATMENT (Fluids/Prop Amounts)	Frac Fluid 43,486 Bbls Proppant 217,080 Lbs

Reported to
Frac Focus

Minimum Gas Allowable

(165:10-17-7)

Gas Purchaser/Measurer

Chesapeake Operating, L.L.C.

☒

OR

1st Sales Date

12/14/2016

INITIAL TEST DATA

INITIAL TEST DATE	1/7/2017
OIL-BBL/DAY	226
OIL-GRAVITY (API)	
GAS-MCF/DAY	2,082
GAS-OIL RATIO CU FT/BBL	9,212
WATER-BBL/DAY	2292
PUMPING OR FLOWING	Artificial Lift
INITIAL SHUT-IN PRESSURE	
CHOKE SIZE	
FLOW TUBING PRESSURE	195

AS SUBMITTED

A record of the formations drilled through, and pertinent remarks are presented on the reverse. I declare that I have knowledge of the contents of this report and am authorized by my organization to make this report, which was prepared by me or under my supervision and direction, with the data and facts stated herein to be true, correct, and complete to the best of my knowledge and belief.

Sara Everett

Sara Everett, Regulatory Analyst

1/12/2017

405-848-8000

SIGNATURE

NAME (PRINT OR TYPE)

DATE

PHONE NUMBER

P.O. BOX 18496

OKLAHOMA CITY

OK

73154

sara.everett@chk.com

ADDRESS

CITY

STATE

ZIP

EMAIL ADDRESS

Give formation names and tops, if available, or descriptions and thickness of formations drilled through. Show intervals cored or drillstem tested.

WELL NO. 1H

NAMES OF FORMATIONS	TOP
MISSISSIPPIAN	5,536

FOR COMMISSION USE ONLY	
ITD on file	<input type="checkbox"/> YES <input type="checkbox"/> NO
APPROVED	DISAPPROVED
<div>2) Reject Codes</div> <div> <div></div> <div></div> <div></div> <div></div> <div></div> </div>	

Were open hole logs run?	<u> </u> yes <u>X</u> no
Date Last log was run	<u> </u> N/A
Was CO ₂ encountered?	<u> </u> yes <u>X</u> no at what depths?
Was H ₂ S encountered?	<u> </u> yes <u>X</u> no at what depths?
Were unusual drilling circumstances encountered?	<u> </u> yes <u>X</u> no
If yes, briefly explain.	

Other remarks:

640 Acres

If more than three drainholes are proposed, attach a separate sheet indicating the necessary information.

Direction must be stated in degrees azimuth.
Please note, the horizontal drainhole and its end point must be located within the boundaries of the lease or spacing unit.

Directional surveys are required for all drainholes and directional wells.

640 Acres

SEC	TWP	RGE	COUNTY			
Spot Location	1/4	1/4	1/4	Feet From 1/4 Sec Lines	FSL	FWL
Measured Total Depth	True Vertical Depth		BHL From Lease, Unit, or Property Line:			

LATERAL #1									
SEC	18	TWP	27N	RGE	12W	COUNTY			
						ALFALFA			
Spot Location						Feet From 1/4 Sec Lines	FNL 177	FWL 1,052	
NE 1/4		NE 1/4		NW 1/4		NW 1/4			
Depth of Deviation		4,990		Radius of Turn		403		Direction	352
Measured Total Depth		10,535		True Vertical Depth		5,393		BHL From Lease, Unit, or Property Line:	
								177	

SEC	TWP	RGE	COUNTY			
Spot Location				Feet From 1/4 Sec Lines	FSL	FWL
1/4	1/4	1/4	1/4			
Depth of Deviation		Radius of Turn	Direction	Total Length		
Measured Total Depth		True Vertical Depth	BHL From Lease, Unit, or Property Line:			

SEC	TWP	RGE	COUNTY			
Spot Location				Feet From 1/4 Sec Lines	FSL	FWL
1/4	1/4	1/4	1/4			
Depth of Deviation		Radius of Turn	Direction	Total Length		
Measured Total Depth		True Vertical Depth	BHL From Lease, Unit, or Property Line:			

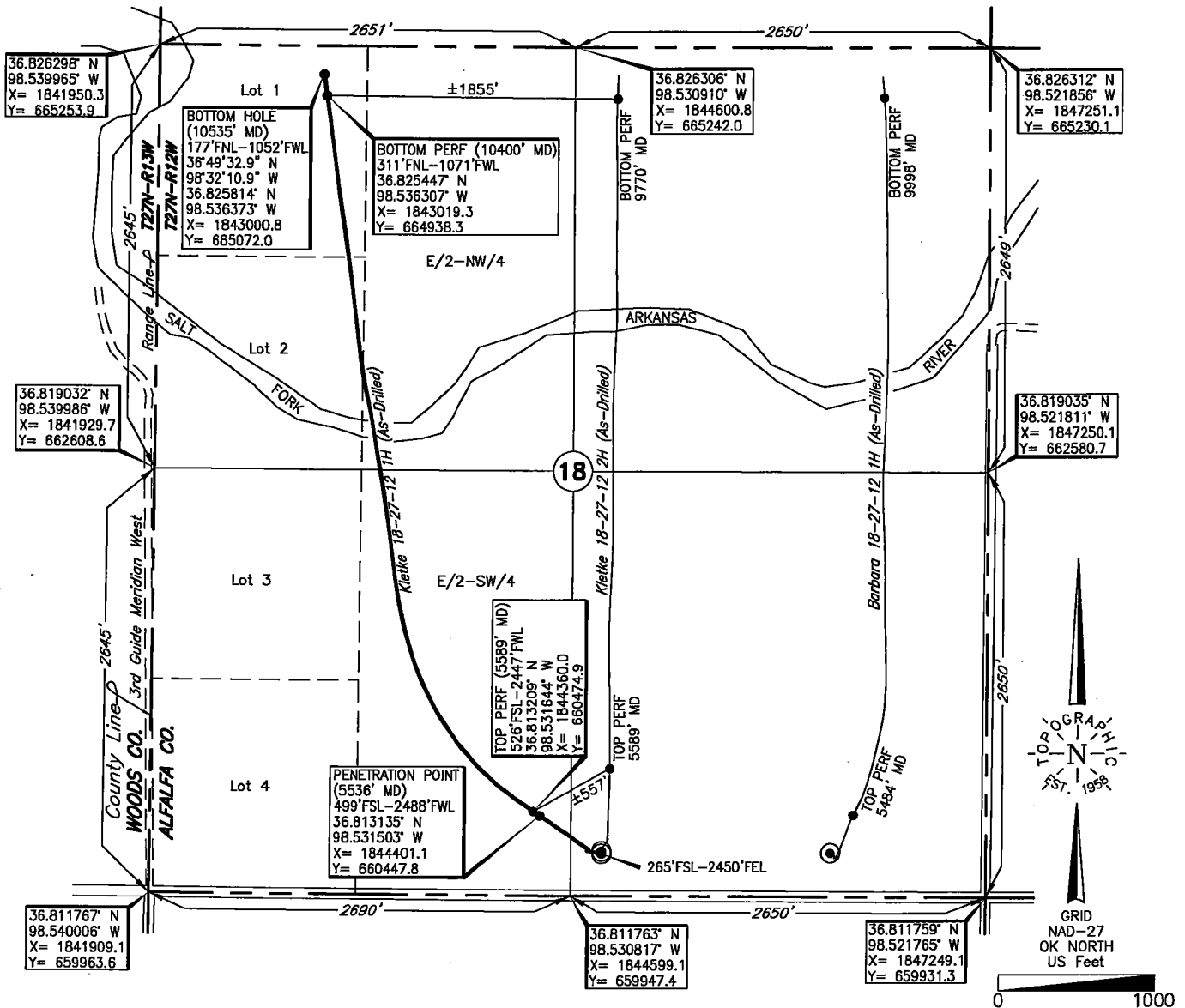
TOPOGRAPHIC LAND SURVEYORS OF OKLAHOMA

6709 NORTH CLASSEN BLVD., OKLA. CITY, OKLA. 73116 * LOCAL (405) 843-4847 * OUT OF STATE (800) 654-3219
Certificate of Authorization No. 1293 L.S.

ALFALFA

County, Oklahoma

265'FSL-2450'FEL Section 18 Township 27N Range 12W I.M.



Operator: CHESAPEAKE OPERATING, L.L.C.

Lease Name: KLETKE 18-27-12

Well No.: 1H

ELEVATION:

1278' Gr. at Level Pad

Topography & Vegetation Loc. fell on level pad; ±230' North of E-W power line

Good Drill Site? Yes Reference Stakes or Alternate Location Stakes Set None

Best Accessibility to Location From South off county road

Distance & Direction

from Hwy Jct or Town From the Jct. of St. Hwy. 8 and US. Hwy. 64 West, North of Cherokee, Ok, go ±9 miles West on US. Hwy. 64, then ±1 mile North to the SE Cor. of Sec. 18-T27N-R12W

This information was gathered with a GPS receiver with ±1 foot Horiz./Vert. accuracy

DATUM: NAD-27
LAT: 36°48'45.0"N
LONG: 98°31'48.5"W
LAT: 36.812491° N
LONG: 98.530138° W
STATE PLANE
COORDINATES: (US Feet)
ZONE: OK NORTH
X: 1844799.3
Y: 660211.2

269165 Date of Drawing: Dec. 19, 2016
Invoice # 240823 Date Staked: Mar. 3, 2015 JP

FINAL AS-DRILLED PLAT

AS-DRILLED INFORMATION
FURNISHED BY CHESAPEAKE OPERATING, L.L.C.