

Oklahoma Corporation Commission  
Oil & Gas Conservation Division  
Post Office Box 52000  
Oklahoma City, Oklahoma 73152-2000  
Rule 165: 10-3-25

Form 1002A

API No.: 35133252360000

**Completion Report**

Spud Date: January 04, 2017

OTC Prod. Unit No.:

Drilling Finished Date: January 12, 2017

1st Prod Date:

Completion Date: January 12, 2017

**Drill Type: STRAIGHT HOLE**

Well Name: SULLINS RANCH 1-13

Purchaser/Measurer:

Location: SEMINOLE 13 7N 5E  
E2 SW SE SE  
330 FSL 1840 FWL of 1/4 SEC  
Derrick Elevation: 827 Ground Elevation: 821

First Sales Date:

Operator: PRESLEY OPERATING LLC 23803

101 PARK AVE STE 670  
OKLAHOMA CITY, OK 73102-7220

Completion Type		Location Exception		Increased Density	
	Single Zone	Order No		Order No	
	Multiple Zone	There are no Location Exception records to display.		There are no Increased Density records to display.	
	Commingled				

Casing and Cement							
Type	Size	Weight	Grade	Feet	PSI	SAX	Top of CMT
SURFACE	8 5/8	24	J-55	335	2000	280	SURFACE

Liner								
Type	Size	Weight	Grade	Length	PSI	SAX	Top Depth	Bottom Depth
There are no Liner records to display.								

**Total Depth: 3450**

Packer		Plug	
Depth	Brand & Type	Depth	Plug Type
There are no Packer records to display.		There are no Plug records to display.	

Initial Test Data										
Test Date	Formation	Oil BBL/Day	Oil-Gravity (API)	Gas MCF/Day	Gas-Oil Ratio Cu FT/BBL	Water BBL/Day	Pumpin or Flowing	Initial Shut-In Pressure	Choke Size	Flow Tubing Pressure
There are no Initial Data records to display.										

Were open hole logs run? Yes

Formation	Top
CALVIN	2536
SENORA	2696
THURMAN	2904
EARLSBORO	2986
BARTLESVILLE	3110
CROMWELL	3230

Date last log run: January 11, 2017

Were unusual drilling circumstances encountered? No  
 Explanation:

Other Remarks
There are no Other Remarks.

FOR COMMISSION USE ONLY
<div>Status: Accepted</div> <div>1135727</div>

API NO. 133-25236  
OTC PROD.  
UNIT NO.

PLEASE TYPE OR USE BLACK INK ONLY  
NOTE:

Attach copy of original 1002A  
if recompletion or reentry.

OKLAHOMA CORPORATION COMMISSION  
Oil & Gas Conservation Division  
Post Office Box 52000  
Oklahoma City, Oklahoma 73152-2000  
Rule 165:10-3-25

RECEIVED

JAN 23 2017

Form 1002A  
Rev. 2009

OKLAHOMA CORPORATION  
COMMISSION

☒ ORIGINAL  
☐ AMENDED (Reason)

DRY HOLE

COMPLETION REPORT

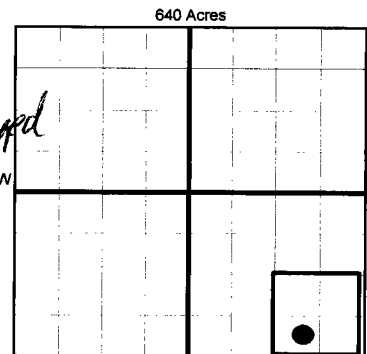
TYPE OF DRILLING OPERATION

☒ STRAIGHT HOLE ☐ DIRECTIONAL HOLE ☐ HORIZONTAL HOLE  
☐ SERVICE WELL

If directional or horizontal, see reverse for bottom hole location.

COUNTY	SEMINOLE	SEC	13	TWP	7N	RGE	5E
LEASE NAME	SULLINS RANCH #1-13			WELL NO.	1-13		
E/2 1/4 SW 1/4 SE 1/4 SE 1/4	FSL OF 1/4 SEC	330	FWL OF 1/4 SEC	1840			
ELEVATION N Derrick	827	Ground	821	Latitude (if known)			
OPERATOR NAME	PRESLEY OPERATING LLC			OTC/OCC OPERATOR NO.	23803		
ADDRESS	101 PARK AVE, SUITE 670						
CITY	OKLAHOMA CITY		STATE	OK	ZIP	73102	

SPUD DATE 1/4/17  
DRLG FINISHED DATE 1/12/17  
DATE OF WELL COMPLETION 1/12/17  
1st PROD DATE DRY HOLE  
RECOMP DATE



COMPLETION TYPE

<input type="checkbox"/> SINGLE ZONE	DRY HOLE
<input type="checkbox"/> MULTIPLE ZONE	
Application Date	
COMINGLED	
Application Date	
LOCATION	
EXCEPTION ORDER	
INCREASED DENSITY ORDER NO.	

CASING & CEMENT (Form 1002C must be attached)

TYPE	SIZE	WEIGHT	GRADE	FEET	PSI	SAX	TOP OF CMT
CONDUCTOR							
SURFACE	8 5/8	24#	J-55	335	2000	280	SURFACE
INTERMEDIATE							
PRODUCTION							
LINER							

PACKER @ \_\_\_\_\_ BRAND & TYPE \_\_\_\_\_ PLUG @ \_\_\_\_\_ TYPE \_\_\_\_\_ PLUG @ \_\_\_\_\_ TYPE \_\_\_\_\_ TOTAL DEPTH 3,450  
PACKER @ \_\_\_\_\_ BRAND & TYPE \_\_\_\_\_ PLUG @ \_\_\_\_\_ TYPE \_\_\_\_\_ PLUG @ \_\_\_\_\_ TYPE \_\_\_\_\_

COMPLETION & TEST DATA BY PRODUCING FORMATION

FORMATION	
SPACING & SPACING ORDER NUMBER	
CLASS: Oil, Gas, Dry, Inj, Disp, Comm Disp, Svc	DRY HOLE
PERFORATED INTERVALS	
ACID/VOLUME	
FRACTURE TREATMENT (Fluids/Prop Amounts)	

☐ Min Gas Allowable (165:10-17-7) OR Gas Purchaser/Measurer  
☐ Oil Allowable (165:10-13-3) First Sales Date

INITIAL TEST DATA

INITIAL TEST DATE	DRY HOLE
OIL-BBL/DAY	
OIL-GRAVITY (API)	
GAS-MCF/DAY	
GAS-OIL RATIO CU FT/BBL	
WATER-BBL/DAY	
PUMPING OR FLOWING	
INITIAL SHUT-IN PRESSURE	
CHOKE SIZE	
FLOW TUBING PRESSURE	

AS SUBMITTED

A record of the formations drilled through, and pertinent remarks are presented on the reverse. I declare that I have knowledge of the contents of this report and am authorized by my organization to make this report, which was prepared by me or under my supervision and direction, with the data and facts stated herein to be true, correct, and complete to the best of my knowledge and belief.

SIGNATURE *Travers Boughdady* NAME (PRINT OR TYPE) TRAVERS BOUGHADLY DATE 1/16/2017 PHONE NUMBER 405-526-3000  
101 PARK AVE, SUITE 670 OKLAHOMA CITY OK 73102 BO@PRESLEYPETROLEUM.COM  
ADDRESS CITY STATE ZIP EMAIL ADDRESS

PLEASE TYPE OR USE BLACK INK ONLY  
FORMATION RECORD

Give formation names and tops, if available, or descriptions and thickness of formations drilled through. Show intervals cored or drillstem tested.

NAMES OF FORMATIONS	TOP
CALVIN	2,536
SENORA	2,696
THURMAN	2,904
EARLSBORO	2,986
BARTLESVILLE	3,110
CROMWELL	3,230

LEASE NAME SULLINS RANCH WELL NO. 1-13

FOR COMMISSION USE ONLY	
ITD on file <input type="checkbox"/> YES <input type="checkbox"/> NO	
APPROVED _____	DISAPPROVED _____
2) Reject Codes	

Were open hole logs run? ☒ yes ☐ no

Date Last log was run 1/11/2017

Was CO<sub>2</sub> encountered? ☐ yes ☒ no at what depths? \_\_\_\_\_

Was H<sub>2</sub>S encountered? ☐ yes ☒ no at what depths? \_\_\_\_\_

Were unusual drilling circumstances encountered? ☐ yes ☒ no

If yes, briefly explain below \_\_\_\_\_

Other remarks:

640 Acres


If more than three drainholes are proposed, attach a separate sheet indicating the necessary information.

Direction must be stated in degrees azimuth. Please note, the horizontal drainhole and its end point must be located within the boundaries of the lease or spacing unit.

Directional surveys are required for all drainholes and directional wells.

640 Acres


BOTTOM HOLE LOCATION FOR DIRECTIONAL HOLE

SEC	TWP	RGE	COUNTY		
Spot Location	1/4	1/4	1/4	Feet From 1/4 Sec Lines	FSL
Measured Total Depth	True Vertical Depth		BHL From Lease, Unit, or Property Line:		FWL

BOTTOM HOLE LOCATION FOR HORIZONTAL HOLE: (LATERALS)

**LATERAL #1**

SEC	TWP	RGE	COUNTY		
Spot Location	1/4	1/4	1/4	Feet From 1/4 Sec Lines	FSL
Depth of Deviation	Radius of Turn		Direction	Total Length	FWL
Measured Total Depth	True Vertical Depth		BHL From Lease, Unit, or Property Line:		

**LATERAL #2**

SEC	TWP	RGE	COUNTY		
Spot Location	1/4	1/4	1/4	Feet From 1/4 Sec Lines	FSL
Depth of Deviation	Radius of Turn		Direction	Total Length	FWL
Measured Total Depth	True Vertical Depth		BHL From Lease, Unit, or Property Line:		

**LATERAL #3**

SEC	TWP	RGE	COUNTY		
Spot Location	1/4	1/4	1/4	Feet From 1/4 Sec Lines	FSL
Depth of Deviation	Radius of Turn		Direction	Total Length	FWL
Measured Total Depth	True Vertical Depth		BHL From Lease, Unit, or Property Line:		