

Oklahoma Corporation Commission
Oil & Gas Conservation Division
Post Office Box 52000
Oklahoma City, Oklahoma 73152-2000
Rule 165: 10-3-25

Form 1002A

API No.: 35073253270001

Completion Report

Spud Date: July 07, 2016

OTC Prod. Unit No.: 073-217793

Drilling Finished Date: July 18, 2016

1st Prod Date: August 12, 2016

Completion Date: July 31, 2016

Drill Type: HORIZONTAL HOLE

Min Gas Allowable: Yes

Well Name: CALDWELL 22-18-6 1H

Purchaser/Measurer: CHESAPEAKE OPERATING LLC

Location: KINGFISHER 22 18N 6W
SW SW SE SE
301 FSL 1279 FEL of 1/4 SEC
Derrick Elevation: 1204 Ground Elevation: 1179

First Sales Date: 08/12/2016

Operator: CHESAPEAKE OPERATING LLC 17441
PO BOX 18496
6100 N WESTERN AVE
OKLAHOMA CITY, OK 73154-0496

Completion Type		Location Exception		Increased Density	
X	Single Zone	Order No		Order No	
	Multiple Zone	659306		There are no Increased Density records to display.	
	Commingled	659829			

Casing and Cement							
Type	Size	Weight	Grade	Feet	PSI	SAX	Top of CMT
SURFACE	9 5/8	36	J-55	1512		602	SURFACE
PRODUCTION	7	26	P-110EC	6750		261	3450

Liner								
Type	Size	Weight	Grade	Length	PSI	SAX	Top Depth	Bottom Depth
LINER	4 1/2	11.6	P-110EC	3897	0	475	6553	10450

Total Depth: 10519

Packer	
Depth	Brand & Type
There are no Packer records to display.	

Plug	
Depth	Plug Type
There are no Plug records to display.	

Initial Test Data										
Test Date	Formation	Oil BBL/Day	Oil-Gravity (API)	Gas MCF/Day	Gas-Oil Ratio Cu FT/BBL	Water BBL/Day	Pumpin or Flowing	Initial Shut-In Pressure	Choke Size	Flow Tubing Pressure
Aug 13, 2016	OSWEGO	517		420	812	1397	ARTIFICIA			302

Completion and Test Data by Producing Formation

Formation Name: OSWEGO

Code: 404OSWG

Class: OIL

Spacing Orders

Order No	Unit Size
655776	640

Perforated Intervals

From	To
6760	10384

Acid Volumes

757,589 GALLONS HCL ACID

Fracture Treatments

19,343 BARRELS FRAC FLUID, 163 POUNDS PROPPANT
--

Formation	Top
OSWEGO	6646

Were open hole logs run? No

Date last log run:

Were unusual drilling circumstances encountered? No

Explanation:

Other Remarks

END OF HOLE PAST LINER 10,450' - 10,519' CEMENTED

Lateral Holes

Sec: 22 TWP: 18N RGE: 6W County: KINGFISHER

NE SE NW NE

963 FNL 1352 FEL of 1/4 SEC

Depth of Deviation: 6134 Radius of Turn: 281 Direction: 357 Total Length: 3873

Measured Total Depth: 10519 True Vertical Depth: 6415 End Pt. Location From Release, Unit or Property Line: 963

FOR COMMISSION USE ONLY

1135658

Status: Accepted

API NO. 35-073-25327
 OTC PROD.
 UNIT NO. 073-217793

PLEASE TYPE OR USE BLACK INK ONLY
 NOTE: Attach copy of original 1002A if recompletion or reentry.

OKLAHOMA CORPORATION COMMISSION
 Oil & Gas Conservation Division
 Post Office Box 52000
 Oklahoma City, Oklahoma 73152-2000
 Rule 165:10-3-25

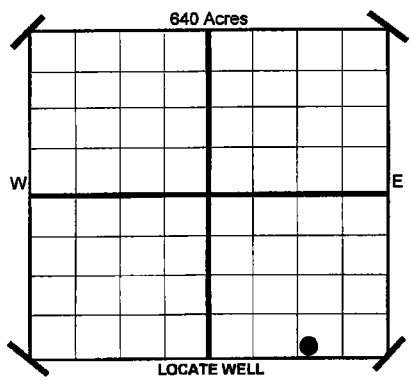
RECEIVED
 656376
 SEP 16 2016
 OKLAHOMA CORPORATION COMMISSION

ORIGINAL
 AMENDED
 Reason Amended

COMPLETION REPORT

TYPE OF DRILLING OPERATION
 STRAIGHT HOLE DIRECTIONAL HOLE HORIZONTAL HOLE
 SERVICE WELL
 If directional or horizontal, see reverse for bottom hole location.

SPUD DATE 7/7/2016
 DRLG FINISHED DATE 7/18/2016
 DATE OF WELL COMPLETION 7/31/2016
 1ST PROD DATE 8/12/2016
 RECOMP DATE



COUNTY KINGFISHER SEC 22 TWP 18N RGE 6W
 LEASE NAME CALDWELL 22-18-6
 WELL NO. 1H
 SW 1/4 SW 1/4 SE 1/4 SE 1/4 301 1/4 SEC 1,279
 ELEVATION
 Derrick Ft 1,204 Ground 1,179
 OPERATOR NAME CHESAPEAKE OPERATING, L.L.C. OTC/OCC OPERATOR NO. 17441
 ADDRESS P.O. BOX 18496
 CITY OKLAHOMA CITY STATE OK ZIP 73154

COMPLETION TYPE
 SINGLE ZONE
 MULTIPLE ZONE
 COMMINGLED
 LOCATION EXCEPTION ORDER NO. 656416 (INTERIM)
 INCREASED DENSITY ORDER NO. N/A

CASING & CEMENT (Form 1002C must be attached)

TYPE	SIZE	WEIGHT	GRADE	FEET	PSI	SAX	TOP	
CONDUCTOR								
SURFACE	9 5/8"	36#	J-55	1,512		602	SURFACE	
INTERMEDIATE								
PRODUCTION	7"	26#	P-110EC	6,750		261	3,450	
LINER	4 1/2"	11.6#	P-110EC	6,553-10,450		475	6,553	
							TOTAL DEPTH	*10,519

PACKER @ N/A BRAND & TYPE
 PLUG @ TYPE
 PLUG @ TYPE

COMPLETION & TEST DATA BY PRODUCING FORMATION

4040 SWG

FORMATION	OSWEGO					
SPACING & SPACING ORDER NUMBER	640 655776					Regated to Frac Focus
CLASS: Oil, Gas, Dry, Inj. Disp, Comm Disp, Svc	OIL					
PERFORATED INTERVALS	6760-10,384					
ACID/VOLUME	HCL Acid 757,589 GALS					
FRACTURE TREATMENT (Fluids/Prop Amounts)	Frac Fluid 19,343 BBLs Proppant 163 LBS					

Minimum Gas Allowable (165:10-17-7) OR Gas Purchaser/Measurer Chesapeake Operating, L.L.C.
 1st Sales Date 8/12/2016

INITIAL TEST DATA

INITIAL TEST DATE	8/13/2016				
OIL-BBL/DAY	517				
OIL-GRAVITY (API)					
GAS-MCF/DAY	420				
GAS-OIL RATIO CU FT/BBL	812				
WATER-BBL/DAY	1,397				
PUMPING OR FLOWING	ARTIFICIAL LIFT				
INITIAL SHUT-IN PRESSURE					
CHOKE SIZE					
FLOW TUBING PRESSURE	302				

AS SUBMITTED

A record of the formations drilled through, and pertinent remarks are presented on the reverse. I declare that I have knowledge of the contents of this report and am authorized by my organization to make this report, which was prepared by me or under my supervision and direction, with the data and facts stated herein to be true, correct, and complete to the best of my knowledge and belief.

SIGNATURE: JP Powell, Sr. Regulatory Analyst
 NAME (PRINT OR TYPE): JP Powell, Sr. Regulatory Analyst
 DATE: 9/15/2016
 PHONE NUMBER: 405-848-8000
 ADDRESS: P.O. BOX 18496, OKLAHOMA CITY, OK 73154
 EMAIL ADDRESS: ip.powell@chk.com

PLEASE TYPE OR USE BLACK INK ONLY
FORMATION RECORD

Give formation names and tops, if available, or descriptions and thickness of formations drilled through. Show intervals cored or drillstem tested.

LEASE NAME CALDWELL 22-18-6

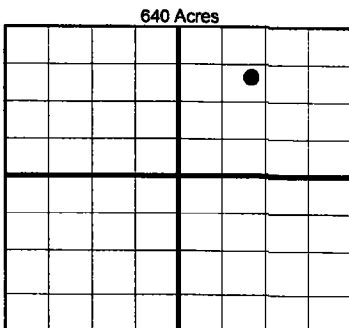
WELL NO. 1H

NAMES OF FORMATIONS	TOP
OSWEGO	6,646

FOR COMMISSION USE ONLY	
ITD on file	<input type="checkbox"/> YES <input type="checkbox"/> NO
APPROVED	DISAPPROVED
2) Reject Codes	

Were open hole logs run?	yes	<input checked="" type="checkbox"/>	no
Date last log was run	N/A		
Was CO ₂ encountered?	yes	<input checked="" type="checkbox"/>	no at what depths?
Was H ₂ S encountered?	yes	<input checked="" type="checkbox"/>	no at what depths?
Were unusual drilling circumstances encountered?	yes	<input checked="" type="checkbox"/>	no
If yes, briefly explain.			

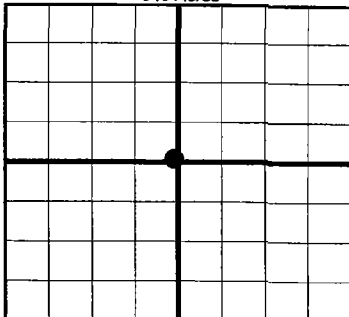
Other remarks: *10,450'-10,519' CEMENTED



If more than three drainholes are proposed, attach a separate sheet indicating the necessary information.

Direction must be stated in degrees azimuth. Please note, the horizontal drainhole and its end point must be located within the boundaries of the lease or spacing unit.

Directional surveys are required for all drainholes and directional wells.
640 Acres



BOTTOM HOLE LOCATION FOR DIRECTIONAL HOLE

SEC	TWP	RGE	COUNTY				
Spot Location	1/4	1/4	1/4	1/4	Feet From 1/4 Sec Lines	FSL	FWL
Measured Total Depth	True Vertical Depth		BHL From Lease, Unit, or Property Line:				

BOTTOM HOLE LOCATION FOR HORIZONTAL HOLE: (LATERALS)

SEC	TWP	RGE	COUNTY				
22	18N	6W	KINGFISHER				
Spot Location	NE 1/4	SE 1/4	NW 1/4	NE 1/4	Feet From 1/4 Sec Lines	FNL 963	FEL 1,352
Depth of Deviation	6,134		Radius of Turn	281	Direction	357	Total Length 3,873
Measured Total Depth	10,519		True Vertical Depth 6,415		BHL From Lease, Unit, or Property Line: 963		

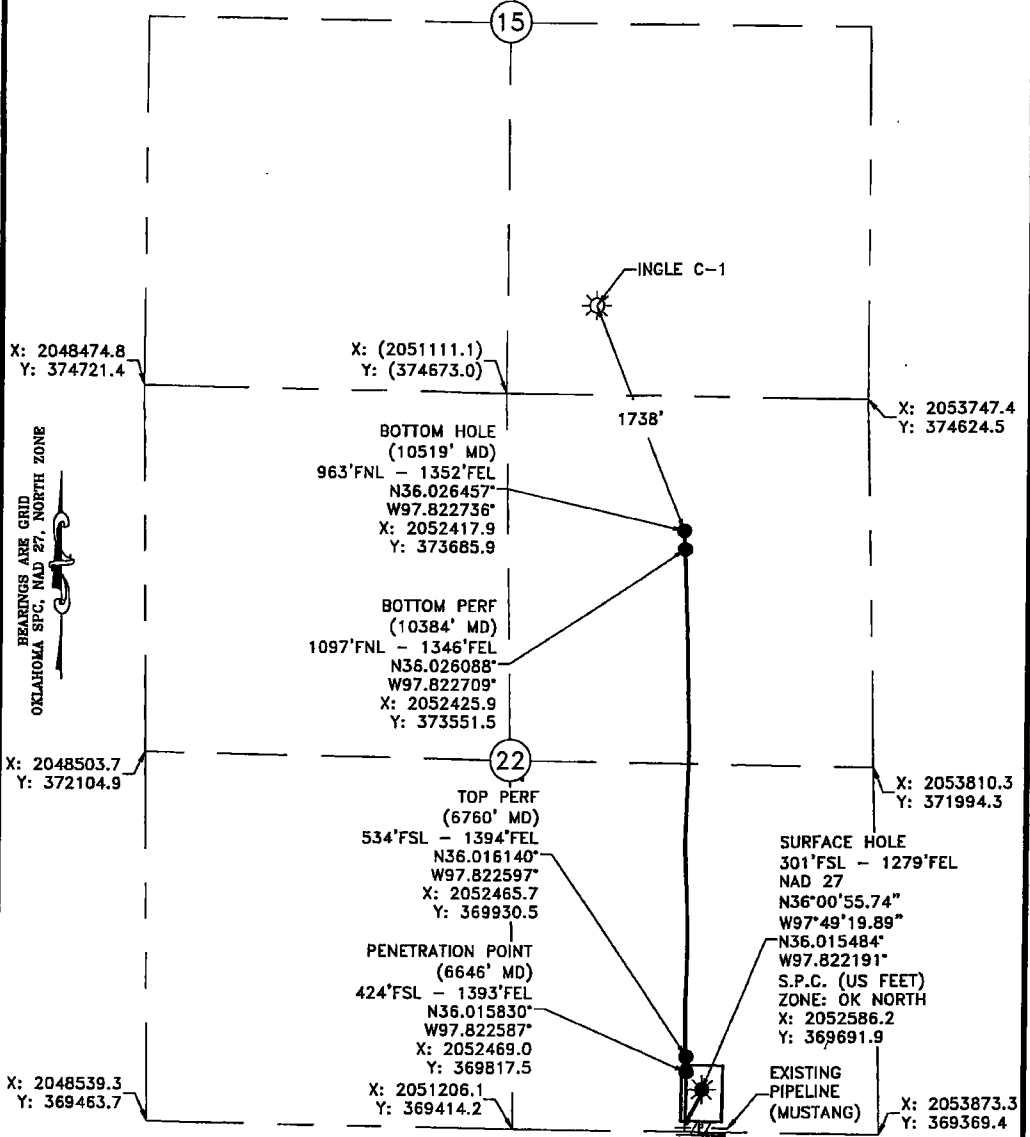
LATERAL #2

SEC	TWP	RGE	COUNTY			
Spot Location	1/4	1/4	1/4	Feet From 1/4 Sec Lines	FSL	FWL
Depth of Deviation	Radius of Turn		Direction		Total Length	
Measured Total Depth	True Vertical Depth		BHL From Lease, Unit, or Property Line:			

LATERAL #3

SEC	TWP	RGE	COUNTY				
Spot Location	1/4	1/4	1/4	1/4	Feet From 1/4 Sec Lines	FSL	FWL
Depth of Deviation	Radius of Turn		Direction		Total Length		
Measured Total Depth	True Vertical Depth		BHL From Lease, Unit, or Property Line:				

SECTION 22, T 18 N - R 06 W, I.M.,
KINGFISHER COUNTY, OKLAHOMA



Operator: CHESAPEAKE OPERATING, L.L.C. Date Staked: 3/17/2016
 Lease Name: CALDWELL 22-18-6 Well No.: 1H Elevation: 1179'
 Topography and Vegetation: PASTURE
 Good Drill Site? YES Reference or Alt. Location Stakes Set: NONE
 Best Accessibility to Location: FROM COUNTY ROAD
 Distance and Direction from Hwy. Jct. or town: FROM DOVER, HEAD NORTH ON US HWY 81, THEN
HEAD EAST ON CO. RD. F0690 4.75 MILES, TURN NORTH INTO LOCATION

FINAL AS-DRILLED PLAT

As-drilled information furnished by
Chesapeake Operating, Inc.

Chesapeake Operating, Inc.

Gateway
Gateway Services Group, LLC

PO. BOX 960
MEEKER, OK 74855
OFF. (405) 273-0954
FAX (405) 273-0990
O.A. NO. 4261 (LS)
EXP. DATE 6-30-2018

EXHIBIT "A" AS DRILLED
CALDWELL 22-18-6 1H
301' FSL - 1279' FEL
SE/4 SECTION 22, T 18 N - R 06 W, I.M.,
KINGFISHER COUNTY, OKLAHOMA

DRAWN BY: RLG	DATE: 6/8/18	CHK'D: JE	
GATEWAY NO.: 18-0101-101AD	SCALE: 1"=1000'		
PAD P/N: 928759	WELL P/N: 656378		
REV.	DNW.	DESCRIPTION	DATE