

Oklahoma Corporation Commission
 Oil & Gas Conservation Division
 Post Office Box 52000
 Oklahoma City, Oklahoma 73152-2000
 Rule 165: 10-3-25

Form 1002A

API No.: 35137267380001

Completion Report

Spud Date: July 19, 2010

OTC Prod. Unit No.:

Drilling Finished Date: July 25, 2010

Amended

1st Prod Date:

Amend Reason: WELL RECORD / ADD PERFORATIONS

Completion Date: September 20, 2010

Recomplete Date: August 02, 2016

Drill Type: STRAIGHT HOLE

SERVICE WELL

Well Name: NW VELMA HOXBAR UNIT 54

Purchaser/Measurer:

Location: STEPHENS 10 1S 5W
 NW NW SE SE
 1076 FSL 1088 FEL of 1/4 SEC
 Latitude: 34.480861 Longitude: -97.70525
 Derrick Elevation: 0 Ground Elevation: 1024

First Sales Date:

Operator: CHAPARRAL ENERGY LLC 16896

701 CEDAR LAKE BLVD
 OKLAHOMA CITY, OK 73114-7800

Completion Type	
X	Single Zone
	Multiple Zone
	Commingled

Location Exception
Order No
There are no Location Exception records to display.

Increased Density
Order No
There are no Increased Density records to display.

Casing and Cement							
Type	Size	Weight	Grade	Feet	PSI	SAX	Top of CMT
SURFACE	8 5/8	24	J-55	385		175	SURFACE
PRODUCTION	5 1/2	17	J-55	2221		215	870

Liner								
Type	Size	Weight	Grade	Length	PSI	SAX	Top Depth	Bottom Depth
There are no Liner records to display.								

Total Depth: 2221

Packer	
Depth	Brand & Type
1945	AS1X

Plug	
Depth	Plug Type
There are no Plug records to display.	

Initial Test Data

Test Date	Formation	Oil BBL/Day	Oil-Gravity (API)	Gas MCF/Day	Gas-Oil Ratio Cu FT/BBL	Water BBL/Day	Pumpin or Flowing	Initial Shut-In Pressure	Choke Size	Flow Tubing Pressure
-----------	-----------	-------------	-------------------	-------------	-------------------------	---------------	-------------------	--------------------------	------------	----------------------

There are no Initial Data records to display.

Completion and Test Data by Producing Formation

Formation Name: HOXBAR

Code: 405HXBR

Class: INJ

Spacing Orders

Order No	Unit Size
63027	UNIT

Perforated Intervals

From	To
2029	2144

Acid Volumes

3,000 GALLONS 15% HCL + 75 BIO-BALLS

Fracture Treatments

There are no Fracture Treatments records to display.
--

Formation	Top
SEE ORIGINAL	0

Were open hole logs run? Yes

Date last log run:

Were unusual drilling circumstances encountered? No

Explanation:

Other Remarks

ADDED PERFORATIONS 2,072' - 2,077' AND 2,077' - 2,097'. SQUEEZED CASING LEAK BETWEEN 1,869' - 1,901' WITH 75 SACKS CLASS C CEMENT. PERMITTED INJECTION ZONE 2,010' - 2,160'. OCC - UIC PERMIT NUMBER 1008570026

FOR COMMISSION USE ONLY

1135657

Status: Accepted

RECEIVED

JAN 06 2017

Form 1002A Rev. 2009

OKLAHOMA CORPORATION COMMISSION

API NO. 137-26738

PLEASE TYPE OR USE BLACK INK ONLY

OKLAHOMA CORPORATION COMMISSION Oil & Gas Conservation Division

NOTE: Attach copy of original 1002A if recompletion or reentry.

ORIGINAL AMENDED (Reason)

Well Record / Add Perforations

COMPLETION REPORT

TYPE OF DRILLING OPERATION

STRAIGHT HOLE DIRECTIONAL HOLE HORIZONTAL HOLE SERVICE WELL

SPUD DATE 7/19/2010

DRLG FINISHED DATE 7/25/2010

DATE OF WELL COMPLETION 9/20/2010

1st PROD DATE

RECOMP DATE 8/2/2016

Longitude (if known) 97.70525

COUNTY Stephens SEC 10 TWP 1S RGE 5W

LEASE NAME NW Velma Hoxbar Unit WELL NO. 54

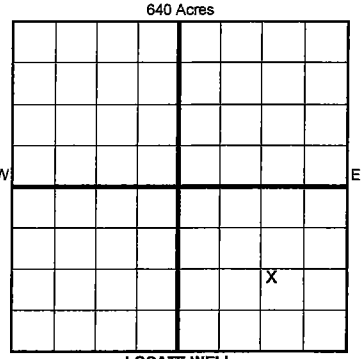
NW 1/4 NW 1/4 SE 1/4 SE 1/4 FSL OF 1/4 SEC 1076 FAL OF 1/4 SEC 1088

ELEVATION N Derrick Ground 1024 Latitude (if known) 34.480861

OPERATOR NAME Chaparral Energy, LLC OTC/OCC OPERATOR NO. 16896

ADDRESS 701 Cedar Lake Blvd.

CITY Oklahoma City STATE OK ZIP 73114



LOCATE WELL

COMPLETION TYPE

SINGLE ZONE MULTIPLE ZONE COMMINGLED LOCATION EXCEPTION ORDER INCREASED DENSITY ORDER NO.

CASING & CEMENT (Form 1002C must be attached)

Table with columns: TYPE, SIZE, WEIGHT, GRADE, FEET, PSI, SAX, TOP OF CMT. Rows include CONDUCTOR, SURFACE, INTERMEDIATE, PRODUCTION, LINER, and TOTAL DEPTH 2221.

PACKER @ 1945 BRAND & TYPE AS1X PLUG @ TYPE PLUG @ TYPE

COMPLETION & TEST DATA BY PRODUCING FORMATION 405 HX13R

Table with columns: FORMATION, SPACING & SPACING ORDER NUMBER, CLASS, PERFORATED INTERVALS, ACID/VOLUME, FRACTURE TREATMENT.

Min Gas Allowable (165:10-17-7) Gas Purchaser/Measurer OR Oil Allowable (165:10-13-3) First Sales Date

INITIAL TEST DATA

Table with columns: INITIAL TEST DATE, OIL-BBL/DAY, OIL-GRAVITY (API), GAS-MCF/DAY, GAS-OIL RATIO CU FT/BBL, WATER-BBL/DAY, PUMPING OR FLOWING, INITIAL SHUT-IN PRESSURE, CHOKE SIZE, FLOW TUBING PRESSURE.

AS SUBMITTED

A record of the formations drilled through, and pertinent remarks are presented on the reverse. I declare that I have knowledge of the contents of this report and am authorized by my organization to make this report, which was prepared by me or under my supervision and direction, with the data and facts stated herein to be true, correct, and complete to the best of my knowledge and belief. Leigh Kuykendall 10/6/2016 (405) 478-8770

PLEASE TYPE OR USE BLACK INK ONLY
FORMATION RECORD

Give formation names and tops, if available, or descriptions and thickness of formations drilled through. Show intervals cored or drillstem tested.

LEASE NAME NW Velma Hoxbar WELL NO. 54

NAMES OF FORMATIONS	TOP
see original	

FOR COMMISSION USE ONLY

ITD on file YES NO

APPROVED _____ DISAPPROVED _____

2) Reject Codes _____

Were open hole logs run? yes no

Date Last log was run _____

Was CO₂ encountered? yes no at what depths? _____

Was H₂S encountered? yes no at what depths? _____

Were unusual drilling circumstances encountered? yes no
If yes, briefly explain below

Other remarks: Added perforations 2072'-2077' and 2077'-2097'. Squeezed csg leak between 1869'-1901' w/75 sx Class C cement.
Permitted injection zone 2010'-2160'. OCC - UIC permit 1008570026

640 Acres

If more than three drainholes are proposed, attach a separate sheet indicating the necessary information.

Direction must be stated in degrees azimuth. Please note, the horizontal drainhole and its end point must be located within the boundaries of the lease or spacing unit.

Directional surveys are required for all drainholes and directional wells.

640 Acres

BOTTOM HOLE LOCATION FOR DIRECTIONAL HOLE

SEC	TWP	RGE	COUNTY	Spot Location		Feet From 1/4 Sec Lines	FSL	FWL
				1/4	1/4	1/4	1/4	
Measured Total Depth		True Vertical Depth		BHL From Lease, Unit, or Property Line:				

BOTTOM HOLE LOCATION FOR HORIZONTAL HOLE: (LATERALS)

LATERAL #1

SEC	TWP	RGE	COUNTY	Spot Location		Feet From 1/4 Sec Lines	FSL	FWL
				1/4	1/4	1/4	1/4	
Depth of Deviation		Radius of Turn		Direction		Total Length		
Measured Total Depth		True Vertical Depth		BHL From Lease, Unit, or Property Line:				

LATERAL #2

SEC	TWP	RGE	COUNTY	Spot Location		Feet From 1/4 Sec Lines	FSL	FWL
				1/4	1/4	1/4	1/4	
Depth of Deviation		Radius of Turn		Direction		Total Length		
Measured Total Depth		True Vertical Depth		BHL From Lease, Unit, or Property Line:				

LATERAL #3

SEC	TWP	RGE	COUNTY	Spot Location		Feet From 1/4 Sec Lines	FSL	FWL
				1/4	1/4	1/4	1/4	
Depth of Deviation		Radius of Turn		Direction		Total Length		
Measured Total Depth		True Vertical Depth		BHL From Lease, Unit, or Property Line:				