

Oklahoma Corporation Commission
Oil & Gas Conservation Division
Post Office Box 52000
Oklahoma City, Oklahoma 73152-2000
Rule 165: 10-3-25

Form 1002A

API No.: 35151243140001

Completion Report

Spud Date: January 02, 2015

OTC Prod. Unit No.: 151-218163

Drilling Finished Date: March 13, 2015

1st Prod Date: December 02, 2016

Amended

Completion Date: October 31, 2016

Amend Reason: SHOW COMPLETION / CORRECT BOTTOM HOLE LOCATION

Drill Type: HORIZONTAL HOLE

Min Gas Allowable: Yes

Well Name: HARRY 3-26-13 1H

Purchaser/Measurer: CHESAPEAKE OPERATING LLC

Location: WOODS 3 26N 13W
SW SE SW SE
180 FSL 1940 FEL of 1/4 SEC
Derrick Elevation: 1430 Ground Elevation: 1408

First Sales Date: 12/02/2016

Operator: CHESAPEAKE OPERATING LLC 17441
PO BOX 18496
6100 N WESTERN AVE
OKLAHOMA CITY, OK 73154-0496

Completion Type		Location Exception		Increased Density	
X	Single Zone	Order No		Order No	
	Multiple Zone	632008		632007	
	Commingled				

Casing and Cement							
Type	Size	Weight	Grade	Feet	PSI	SAX	Top of CMT
SURFACE	13 3/8	48	J-55	380		250	SURFACE
INTERMEDIATE	9 5/8	36	J-55	1215		310	SURFACE
PRODUCTION	7	26	P-110HC / P-110EC	6160		285	4162

Liner								
Type	Size	Weight	Grade	Length	PSI	SAX	Top Depth	Bottom Depth
LINER	4 1/2	11.60	P-110EC	4928	0	515	5552	10480

Total Depth: 10480

Packer	
Depth	Brand & Type
5468	AS-3

Plug	
Depth	Plug Type
There are no Plug records to display.	

Initial Test Data

Test Date	Formation	Oil BBL/Day	Oil-Gravity (API)	Gas MCF/Day	Gas-Oil Ratio Cu FT/BBL	Water BBL/Day	Pumpin or Flowing	Initial Shut-In Pressure	Choke Size	Flow Tubing Pressure
Dec 17, 2016	MISSISSIPPIAN	40		273	6825	1387	ARTIFICIA			252

Completion and Test Data by Producing Formation

Formation Name: MISSISSIPPIAN

Code: 359MSSP

Class: OIL

Spacing Orders

Order No	Unit Size
610311	640

Perforated Intervals

From	To
6200	10339

Acid Volumes

4,500 GALLONS HCL ACID

Fracture Treatments

37,733 BARRELS FRAC FLUID, 207,980 POUNDS PROPPANT
--

Formation	Top
MISSISSIPPIAN	5905

Were open hole logs run? No

Date last log run:

Were unusual drilling circumstances encountered? No

Explanation:

Other Remarks

OCC - THIS DOCUMENT IS ACCEPTED BASED ON THE DATA SUBMITTED THE FINAL LOCATION EXCEPTION HAS NOT BEEN ISSUED.

Lateral Holes

Sec: 3 TWP: 26N RGE: 13W County: WOODS

NW NW NW NE

179 FNL 2630 FEL of 1/4 SEC

Depth of Deviation: 5259 Radius of Turn: 382 Direction: 360 Total Length: 4575

Measured Total Depth: 10480 True Vertical Depth: 5641 End Pt. Location From Release, Unit or Property Line: 179

FOR COMMISSION USE ONLY

1135552

Status: Accepted

PLEASE TYPE OR USE BLACK INK ONLY
FORMATION RECORD

Give formation names and tops, if available, or descriptions and thickness of formations drilled through. Show intervals cored or drillstem tested.

LEASE NAME HARRY 3-26-13

WELL NO. 1H

NAMES OF FORMATIONS	TOP
MISSISSIPPIAN	5,905

FOR COMMISSION USE ONLY

ITD on file YES NO

APPROVED _____ DISAPPROVED _____

2) Reject Codes

Were open hole logs run? yes no

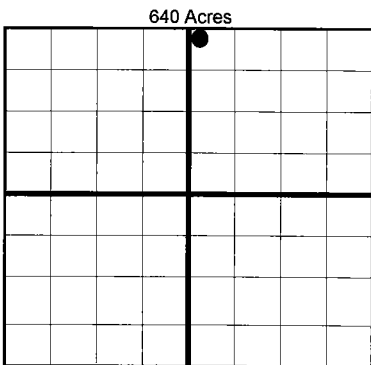
Date Last log was run N/A

Was CO₂ encountered? yes no at what depths?

Was H₂S encountered? yes no at what depths?

Were unusual drilling circumstances encountered? yes no
If yes, briefly explain.

Other remarks:



BOTTOM HOLE LOCATION FOR DIRECTIONAL HOLE

SEC	TWP	RGE	COUNTY			
Spot Location	1/4	1/4	1/4	Feet From 1/4 Sec Lines	FSL	FWL
Measured Total Depth	True Vertical Depth		BHL From Lease, Unit, or Property Line:			

BOTTOM HOLE LOCATION FOR HORIZONTAL HOLE: (LATERALS)

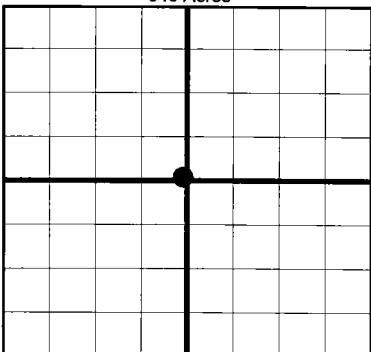
LATERAL #1

SEC	TWP	RGE	COUNTY							
3	26N	13W	WOODS							
Spot Location	NW 1/4	NW 1/4	NW 1/4	NE 1/4	Feet From 1/4 Sec Lines	FNL	179	FEL	2,630	
Depth of Deviation	5,259		Radius of Turn		382	Direction	360		Total Length	4,575
Measured Total Depth	10,480		True Vertical Depth		5,641	BHL From Lease, Unit, or Property Line:				
						179				

If more than three drainholes are proposed, attach a separate sheet indicating the necessary information.

Direction must be stated in degrees azimuth. Please note, the horizontal drainhole and its end point must be located within the boundaries of the lease or spacing unit.

Directional surveys are required for all drainholes and directional wells.



LATERAL #2

SEC	TWP	RGE	COUNTY					
Spot Location	1/4	1/4	1/4	1/4	Feet From 1/4 Sec Lines	FSL	FWL	
Depth of Deviation	Radius of Turn		Direction		Total Length			
Measured Total Depth	True Vertical Depth		BHL From Lease, Unit, or Property Line:					

LATERAL #3

SEC	TWP	RGE	COUNTY					
Spot Location	1/4	1/4	1/4	1/4	Feet From 1/4 Sec Lines	FSL	FWL	
Depth of Deviation	Radius of Turn		Direction		Total Length			
Measured Total Depth	True Vertical Depth		BHL From Lease, Unit, or Property Line:					

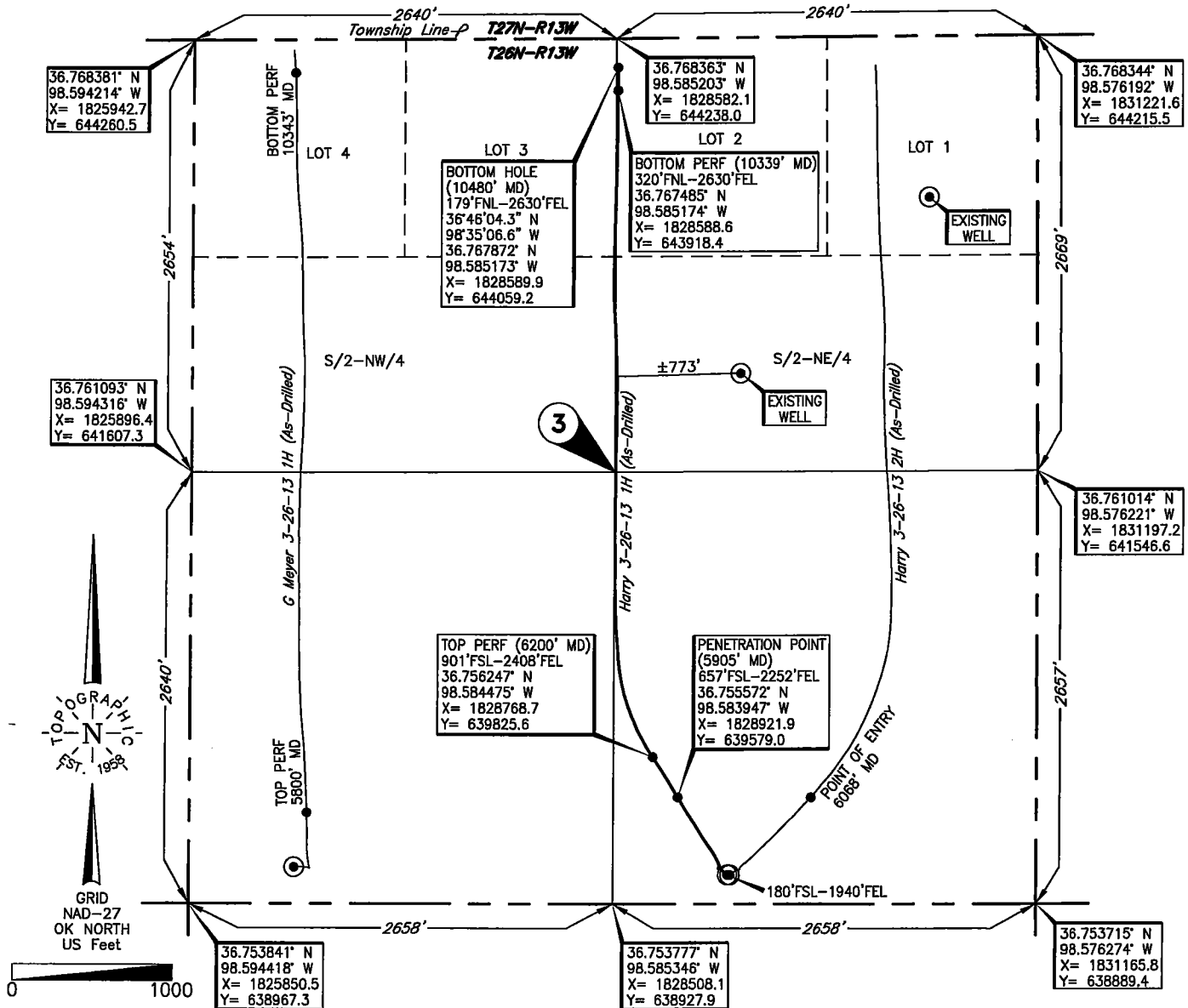
TOPOGRAPHIC LAND SURVEYORS OF OKLAHOMA

6709 NORTH CLASSEN BLVD., OKLA. CITY, OKLA. 73116 * LOCAL (405) 843-4847 * OUT OF STATE (800) 654-3219
 Certificate of Authorization No. 1293 L.S.

WOODS

County, Oklahoma

180'FSL-1940'FEL Section 3 Township 26N Range 13W I.M.



Operator: CHESAPEAKE OPERATING, L.L.C.

Lease Name: HARRY 3-26-13

Well No.: 1H

ELEVATION:
1408' Gr. at Level Pad

Topography & Vegetation Loc. fell on level pad, 253' SE of NE-SW pipeline, ±134' North of E-W pipeline

Good Drill Site? Yes Reference Stakes or Alternate Location
 Stakes Set None

Best Accessibility to Location From South off county road

Distance & Direction
 from Hwy Jct or Town From the Jct. of US. Hwy. 281 North & US. Hwy. 64, in Alva, Ok, go ±4 miles East on US. Hwy. 64, then ±3 miles South to the SE Cor. of Sec. 3-T26N-R13W

DATUM: NAD-27
 LAT: 36°45'15.3" N
 LONG: 98°34'58.4" W
 LAT: 36.754254° N
 LONG: 98.582892° W
 STATE PLANE
 COORDINATES: (US Feet)
 ZONE: OK NORTH
 X: 1829228.1
 Y: 639097.5

Invoice # 268083 Date of Drawing: Nov. 11, 2016
229124 Date Staked: Sep. 11, 2014 JP

FINAL AS-DRILLED PLAT

AS-DRILLED INFORMATION
 FURNISHED BY CHESAPEAKE OPERATING, L.L.C.

This information was gathered with a GPS receiver with ±1 foot Horiz./Vert. accuracy.