

Oklahoma Corporation Commission
Oil & Gas Conservation Division
Post Office Box 52000
Oklahoma City, Oklahoma 73152-2000
Rule 165: 10-3-25

Form 1002A

API No.: 35003231900001

Completion Report

Spud Date: April 16, 2015

OTC Prod. Unit No.: 003-218162

Drilling Finished Date: June 08, 2015

1st Prod Date: December 02, 2016

Amended

Completion Date: October 31, 2016

Amend Reason: SHOW COMPLETION / CORRECT BOTTOM HOLE LOCATION

Drill Type: HORIZONTAL HOLE

Min Gas Allowable: Yes

Well Name: JASMINE 8-27-11 2H

Purchaser/Measurer: CHESAPEAKE OPERATING LLC

Location: ALFALFA 8 27N 11W
NW NW NE NW
265 FNL 1610 FWL of 1/4 SEC
Derrick Elevation: 1228 Ground Elevation: 1203

First Sales Date: 12/02/2016

Operator: CHESAPEAKE OPERATING LLC 17441
PO BOX 18496
6100 N WESTERN AVE
OKLAHOMA CITY, OK 73154-0496

Completion Type		Location Exception		Increased Density	
X	Single Zone	Order No		Order No	
	Multiple Zone	659862		639216	
	Commingled				

Casing and Cement							
Type	Size	Weight	Grade	Feet	PSI	SAX	Top of CMT
SURFACE	13 3/8	48	J-55	374		335	SURFACE
INTERMEDIATE	9 5/8	36	J-55	1216		390	SURFACE
PRODUCTION	7	26	P-110EC	5532		280	2689

Liner								
Type	Size	Weight	Grade	Length	PSI	SAX	Top Depth	Bottom Depth
LINER	4 1/2	13.5	P-110EC	4534	0	540	5284	9818

Total Depth: 9818

Packer	
Depth	Brand & Type
5211	AS-3

Plug	
Depth	Plug Type
There are no Plug records to display.	

Initial Test Data

Test Date	Formation	Oil BBL/Day	Oil-Gravity (API)	Gas MCF/Day	Gas-Oil Ratio Cu FT/BBL	Water BBL/Day	Pumpin or Flowing	Initial Shut-In Pressure	Choke Size	Flow Tubing Pressure
Dec 17, 2016	MISSISSIPPIAN	89		1086	12202	991	ARTIFICIA			172

Completion and Test Data by Producing Formation

Formation Name: MISSISSIPPIAN

Code: 359MSSP

Class: OIL

Spacing Orders

Order No	Unit Size
611088	640

Perforated Intervals

From	To
5360	9679

Acid Volumes

8,000 GALLONS HCL ACID

Fracture Treatments

41,839 BARRELS FRAC FLUID, 230,000 POUNDS PROPPANT

Formation	Top
MISSISSIPPIAN	5317

Were open hole logs run? No

Date last log run:

Were unusual drilling circumstances encountered? No

Explanation:

Other Remarks

There are no Other Remarks.

Lateral Holes

Sec: 8 TWP: 27N RGE: 11W County: ALFALFA

NW SW SW SE

490 FSL 2619 FEL of 1/4 SEC

Depth of Deviation: 4792 Radius of Turn: 466 Direction: 180 Total Length: 4501

Measured Total Depth: 9818 True Vertical Depth: 5258 End Pt. Location From Release, Unit or Property Line: 490

FOR COMMISSION USE ONLY

1135551

Status: Accepted

PLEASE TYPE OR USE BLACK INK ONLY
FORMATION RECORD

Give formation names and tops, if available, or descriptions and thickness of formations drilled through. Show intervals cored or drillstem tested.

LEASE NAME JASMINE 8-27-11

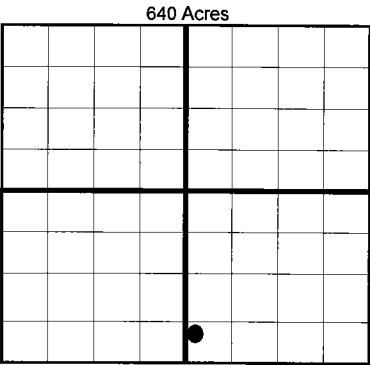
WELL NO. 2H

NAMES OF FORMATIONS	TOP
MISSISSIPPIAN	5,317

FOR COMMISSION USE ONLY	
ITD on file	<input type="checkbox"/> YES <input type="checkbox"/> NO
APPROVED	DISAPPROVED
2) Reject Codes	

Were open hole logs run?	yes	<input checked="" type="checkbox"/>	no
Date Last log was run	N/A		
Was CO ₂ encountered?	yes	<input checked="" type="checkbox"/>	no at what depths?
Was H ₂ S encountered?	yes	<input checked="" type="checkbox"/>	no at what depths?
Were unusual drilling circumstances encountered?	yes	<input checked="" type="checkbox"/>	no
If yes, briefly explain.			

Other remarks:



BOTTOM HOLE LOCATION FOR DIRECTIONAL HOLE

SEC	TWP	RGE	COUNTY				
Spot Location	1/4	1/4	1/4	1/4	Feet From 1/4 Sec Lines	FSL	FWL
Measured Total Depth	True Vertical Depth		BHL From Lease, Unit, or Property Line:				

BOTTOM HOLE LOCATION FOR HORIZONTAL HOLE: (LATERALS)

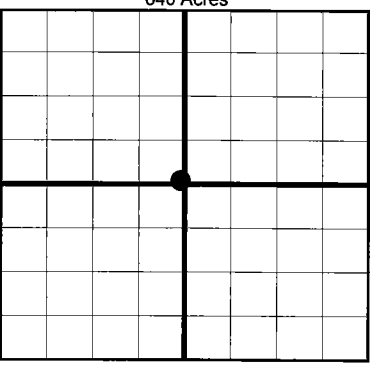
LATERAL #1

SEC	TWP	RGE	COUNTY					
8	27N	11W	ALFALFA					
Spot Location	NW 1/4	SW 1/4	SW 1/4	SE 1/4	Feet From 1/4 Sec Lines	FSL	FEL	2,619
Depth of Deviation	4,792	Radius of Turn	466	Direction	180	Total Length	4,501	
Measured Total Depth	True Vertical Depth		BHL From Lease, Unit, or Property Line:					
9,818	5,258		490					

If more than three drainholes are proposed, attach a separate sheet indicating the necessary information.

Direction must be stated in degrees azimuth. Please note, the horizontal drainhole and its end point must be located within the boundaries of the lease or spacing unit.

Directional surveys are required for all drainholes and directional wells.



LATERAL #2

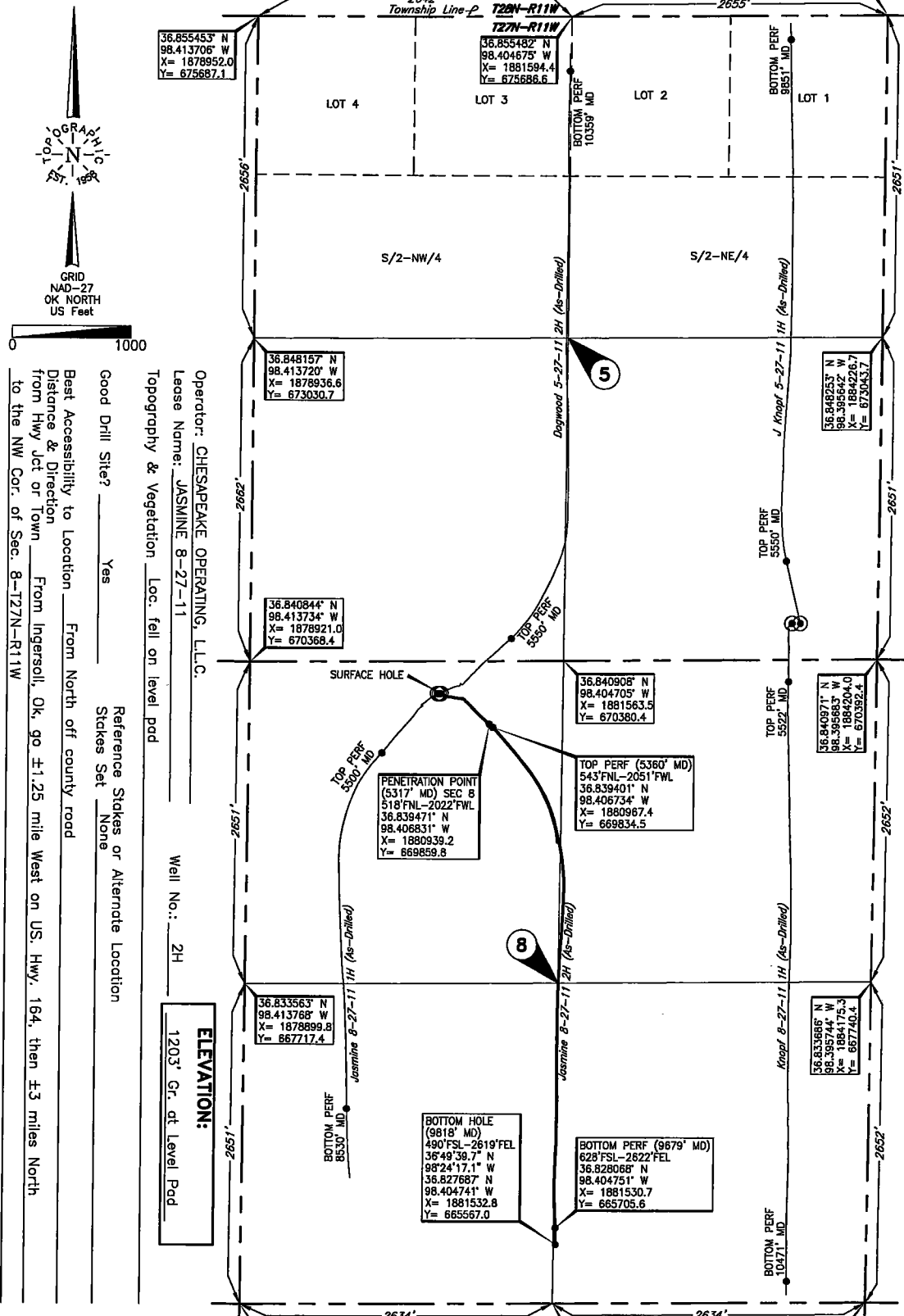
SEC	TWP	RGE	COUNTY				
Spot Location	1/4	1/4	1/4	1/4	Feet From 1/4 Sec Lines	FSL	FWL
Depth of Deviation	Radius of Turn		Direction	Total Length			
Measured Total Depth	True Vertical Depth		BHL From Lease, Unit, or Property Line:				

LATERAL #3

SEC	TWP	RGE	COUNTY				
Spot Location	1/4	1/4	1/4	1/4	Feet From 1/4 Sec Lines	FSL	FWL
Depth of Deviation	Radius of Turn		Direction	Total Length			
Measured Total Depth	True Vertical Depth		BHL From Lease, Unit, or Property Line:				

County, Oklahoma
 265' FNL - 1610' FWL Section 8 Township 27N Range 11W I.M.

36.855335° N
 98.395801° W
 X = 1884248.5
 Y = 675695.1



Operator: CHESAPEAKE OPERATING, L.L.C.
 Lease Name: JASMINE 8-27-11
 Topography & Vegetation: Loc. fell on level pad
 Well No.: 2H
 ELEVATION: 1203' Gr. at Level Pad

Good Drill Site? Yes
 Best Accessibility to Location: From North off county road
 Distance & Direction from Hwy lot or Town: From Ingersoll, Ok, go ±1.25 mile West on US Hwy. 164, then ±3 miles North to the NW Cor. of Sec. 8-T27N-R11W
 Reference Stakes or Alternate Location: Stakes Set None

DATUM: NAD-27
 LAT: 36°50'24.6" N
 LONG: 98°24'29.7" W
 LAT: 36.840155° N
 LONG: 98.408236° W
 STATE PLANE COORDINATES (US Feet)
 ZONE: OK NORTH
 X: 1880528.9
 Y: 670110.6

268609 Date of Drawing: Dec. 01, 2016
 Invoice # 240162C Date Staked: Feb. 25, 2015 JP

FINAL AS-DRILLED PLAT

AS-DRILLED INFORMATION
 FURNISHED BY CHESAPEAKE OPERATING, L.L.C.

Information was gathered with a GPS receiver with horizontal/vertical accuracy of ±1 ft.