

Oklahoma Corporation Commission
Oil & Gas Conservation Division
Post Office Box 52000
Oklahoma City, Oklahoma 73152-2000
Rule 165: 10-3-25

Form 1002A

API No.: 35003231890001

Completion Report

Spud Date: April 12, 2015

OTC Prod. Unit No.: 003-218159

Drilling Finished Date: July 09, 2015

1st Prod Date: December 01, 2016

Amended

Completion Date: November 02, 2016

Amend Reason: SHOW COMPLETION

Drill Type: HORIZONTAL HOLE

Min Gas Allowable: Yes

Well Name: JASMINE 8-27-11 1H

Purchaser/Measurer: CHESAPEAKE OPERATING LLC

Location: ALFALFA 8 27N 11W
NW NW NE NW
265 FNL 1580 FWL of 1/4 SEC
Derrick Elevation: 1226 Ground Elevation: 1203

First Sales Date: 12/01/2016

Operator: CHESAPEAKE OPERATING LLC 17441
PO BOX 18496
6100 N WESTERN AVE
OKLAHOMA CITY, OK 73154-0496

Completion Type		Location Exception		Increased Density	
X	Single Zone	Order No		Order No	
	Multiple Zone	659861		639216	
	Commingled				

Casing and Cement							
Type	Size	Weight	Grade	Feet	PSI	SAX	Top of CMT
SURFACE	13 3/8	48	J-55	370		335	SURFACE
INTERMEDIATE	9 5/8	36	J-55	1200		390	SURFACE
PRODUCTION	7	26	P-110EC	5549		275	3680

Liner								
Type	Size	Weight	Grade	Length	PSI	SAX	Top Depth	Bottom Depth
LINER	4 1/2	11.6	P-110EC	3428	0	430	5237	8665

Total Depth: 9101

Packer	
Depth	Brand & Type
5164	AS-3

Plug	
Depth	Plug Type
There are no Plug records to display.	

Initial Test Data

Test Date	Formation	Oil BBL/Day	Oil-Gravity (API)	Gas MCF/Day	Gas-Oil Ratio Cu FT/BBL	Water BBL/Day	Pumpin or Flowing	Initial Shut-In Pressure	Choke Size	Flow Tubing Pressure
Dec 16, 2016	MISSISSIPPIAN	132		963	7295	1062	ARTIFICIA			146

Completion and Test Data by Producing Formation

Formation Name: MISSISSIPPIAN

Code: 359MSSP

Class: OIL

Spacing Orders

Order No	Unit Size
611088	640

Perforated Intervals

From	To
5500	8530

Acid Volumes

5,500 GALLONS HCL ACID

Fracture Treatments

51,838 BARRELS FRAC FLUID, 291,609 POUNDS PROPPANT
--

Formation	Top
MISSISSIPPIAN	5352

Were open hole logs run? No

Date last log run:

Were unusual drilling circumstances encountered? No

Explanation:

Other Remarks

There are no Other Remarks.

Lateral Holes

Sec: 8 TWP: 27N RGE: 11W County: ALFALFA

NW NE SW SW

1052 FSL 906 FWL of 1/4 SEC

Depth of Deviation: 4796 Radius of Turn: 472 Direction: 175 Total Length: 3749

Measured Total Depth: 9101 True Vertical Depth: 5268 End Pt. Location From Release, Unit or Property Line: 906

FOR COMMISSION USE ONLY

1135550

Status: Accepted

API NO. 35-00323189
 OTC PROD. UNIT NO. 003-218159

PLEASE TYPE OR USE BLACK INK ONLY
 NOTE: Attach copy of original 1002A if recompletion or reentry.

OKLAHOMA CORPORATION COMMISSION
 Oil & Gas Conservation Division
 Post Office Box 52000
 Oklahoma City, Oklahoma 73152-2000
 Rule 165:10-3-25

RECEIVED Form 1002A Rev. 2009

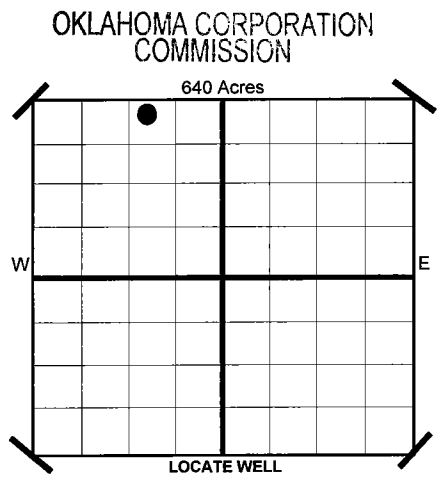
DEC 22 2016

ORIGINAL
 AMENDED
 Reason Amended **Show Completion**

TYPE OF DRILLING OPERATION
 STRAIGHT HOLE DIRECTIONAL HOLE HORIZONTAL HOLE
 SERVICE WELL
 If directional or horizontal, see reverse for bottom hole location.

COUNTY **ALFALFA** SEC **8** TWP **27N** RGE **11W**
 LEASE NAME **JASMINE 8-27-11** WELL NO **1H**
 SHL **NW 1/4 NW 1/4 NE 1/4 NW 1/4** **FNL** FWL OF **1,580**
 ELEVATION **1,226** Ground **1,203** Latitude (if Known)
 OPERATOR NAME **CHESAPEAKE OPERATING, L.L.C.** OTC/OCC OPERATOR NO. **17441**
 ADDRESS **P.O. BOX 18496**
 CITY **OKLAHOMA CITY** STATE **OK** ZIP **73154**

COMPLETION REPORT
 SPUD DATE **4/12/2015**
 DRLG FINISHED DATE **7/9/2015**
 DATE OF WELL COMPLETION **11/2/2016**
 1ST PROD DATE **12/1/2016**
 RECOMP DATE



COMPLETION TYPE
 SINGLE ZONE
 MULTIPLE ZONE
 COMMINGLED
 LOCATION EXCEPTION ORDER NO. **639217 (INTERIM)**
 INCREASED DENSITY ORDER NO. **639216**

CASING & CEMENT (Form 1002C must be attached)

TYPE	SIZE	WEIGHT	GRADE	FEET	PSI	SAX	TOP	
CONDUCTOR								
SURFACE	13 3/8"	48#	J-55	370		335	SURFACE	
INTERMEDIATE	9 5/8"	36#	J-55	1,200		390	SURFACE	
PRODUCTION	7"	26#	P-110EC	5,549		275	3680	
LINER	4 1/2"	11.6#	P-110EC	5,237-8,665		430	5,237	
							TOTAL DEPTH	9,101

PACKER @ **5.164** BRAND & TYPE **AS-3**
 PLUG @ TYPE PLUG @ TYPE

COMPLETION & TEST DATA BY PRODUCING FORMATION
359 MSSP

FORMATION	Mississippian								
SPACING & SPACING ORDER NUMBER	640 611088								
CLASS: Oil, Gas, Dry, Inj. Disp, Comm Disp, Svc	Oil								
PERFORATED INTERVALS	5500 - 8530								
ACID/VOLUME	HCL Acid 5500 Gals								
FRACTURE TREATMENT (Fluids/Prop Amounts)	Frac Fluid 51,838 Bbbls Proppant 291,609 Lbs								

Reported to Free Focus

Minimum Gas Allowable (165:10-17-7) OR Gas Purchaser/Measurer **Chesapeake Operating, L.L.C.**
 Oil Allowable (165:10-13-3) 1st Sales Date **12/1/2016**

INITIAL TEST DATA

INITIAL TEST DATE	12/16/2016						
OIL-BBL/DAY	132						
OIL-GRAVITY (API)							
GAS-MCF/DAY	963						
GAS-OIL RATIO CU FT/BBL	7,295						
WATER-BBL/DAY	1062						
PUMPING OR FLOWING	Artificial Lift						
INITIAL SHUT-IN PRESSURE							
CHOKE SIZE							
FLOW TUBING PRESSURE	146						

AS SUBMITTED

A record of the formations drilled through, and pertinent remarks are presented on the reverse. I declare that I have knowledge of the contents of this report and am authorized by my organization to make this report, which was prepared by me or under my supervision and direction, with the data and facts stated herein to be true, correct, and complete to the best of my knowledge and belief.

Sara Everett **Sara Everett, Regulatory Analyst** **12/21/2016** **405-848-8000**
 SIGNATURE NAME (PRINT OR TYPE) DATE PHONE NUMBER
P.O. BOX 18496 **OKLAHOMA CITY** **OK** **73154**
 ADDRESS CITY STATE ZIP **sara.everett@chk.com**
 EMAIL ADDRESS

PLEASE TYPE OR USE BLACK INK ONLY
FORMATION RECORD

Give formation names and tops, if available, or descriptions and thickness of formations drilled through. Show intervals cored or drillstem tested.

LEASE NAME JASMINE 8-27-11

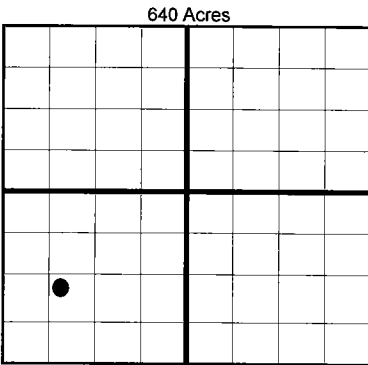
WELL NO. 1H

NAMES OF FORMATIONS	TOP
MISSISSIPPIAN	5,352

FOR COMMISSION USE ONLY	
ITD on file	<input type="checkbox"/> YES <input type="checkbox"/> NO
APPROVED	DISAPPROVED
2) Reject Codes	

Were open hole logs run?	yes	<input checked="" type="checkbox"/>	no
Date Last log was run	N/A		
Was CO ₂ encountered?	yes	<input checked="" type="checkbox"/>	no at what depths?
Was H ₂ S encountered?	yes	<input checked="" type="checkbox"/>	no at what depths?
Were unusual drilling circumstances encountered?	yes	<input checked="" type="checkbox"/>	no
If yes, briefly explain.			

Other remarks:



BOTTOM HOLE LOCATION FOR DIRECTIONAL HOLE

SEC	TWP	RGE	COUNTY				
Spot Location	1/4	1/4	1/4	1/4	Feet From 1/4 Sec Lines	FSL	FWL
Measured Total Depth	True Vertical Depth		BHL From Lease, Unit, or Property Line:				

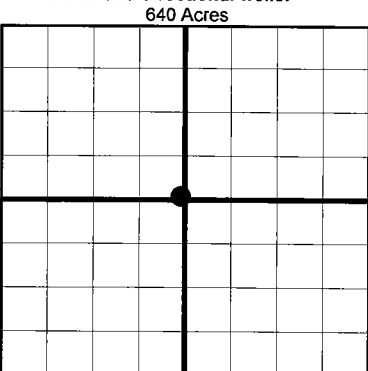
BOTTOM HOLE LOCATION FOR HORIZONTAL HOLE: (LATERALS)

SEC	TWP	RGE	COUNTY							
8	27N	11W	ALFALFA							
Spot Location	NW 1/4	NE 1/4	SW 1/4	SW 1/4	Feet From 1/4 Sec Lines	FSL	1,052	FWL	906	
Depth of Deviation	4,796		Radius of Turn	472		Direction	175		Total Length	3,749
Measured Total Depth	9,101		True Vertical Depth	5,268		BHL From Lease, Unit, or Property Line:				
						906				

If more than three drainholes are proposed, attach a separate sheet indicating the necessary information.

Direction must be stated in degrees azimuth. Please note, the horizontal drainhole and its end point must be located within the boundaries of the lease or spacing unit.

Directional surveys are required for all drainholes and directional wells.



LATERAL #2

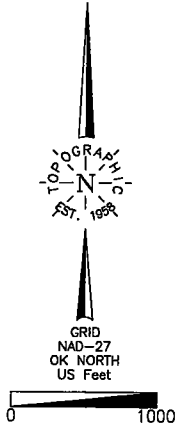
SEC	TWP	RGE	COUNTY				
Spot Location	1/4	1/4	1/4	1/4	Feet From 1/4 Sec Lines	FSL	FWL
Depth of Deviation	Radius of Turn		Direction		Total Length		
Measured Total Depth	True Vertical Depth		BHL From Lease, Unit, or Property Line:				

LATERAL #3

SEC	TWP	RGE	COUNTY				
Spot Location	1/4	1/4	1/4	1/4	Feet From 1/4 Sec Lines	FSL	FWL
Depth of Deviation	Radius of Turn		Direction		Total Length		
Measured Total Depth	True Vertical Depth		BHL From Lease, Unit, or Property Line:				

ALFALFA County, Oklahoma
 265' FNL-1580' FWL Section 8 Township 12N Range 11W I.M.

36.855535° N
 98.395601° W
 X= 1884249.5
 Y= 675695.1



Operator: CHESAPEAKE OPERATING, L.L.C.
 Lease Name: JASMINE 8-27-11
 Topography & Vegetation Loc. fell on level pad
 Well No.: 1H
 ELEVATION: 1203' Gr. at Level Pad

Good Drill Site? Yes
 Reference Stakes or Alternate Location
 Stakes Set None

Best Accessibility to Location From North off county road
 Distance & Direction From Ingersoll, Ok, go ±1.25 mile West on US. Hwy. 164, then ±.3 miles North to the NW Cor. of Sec. 8-12N-R11W

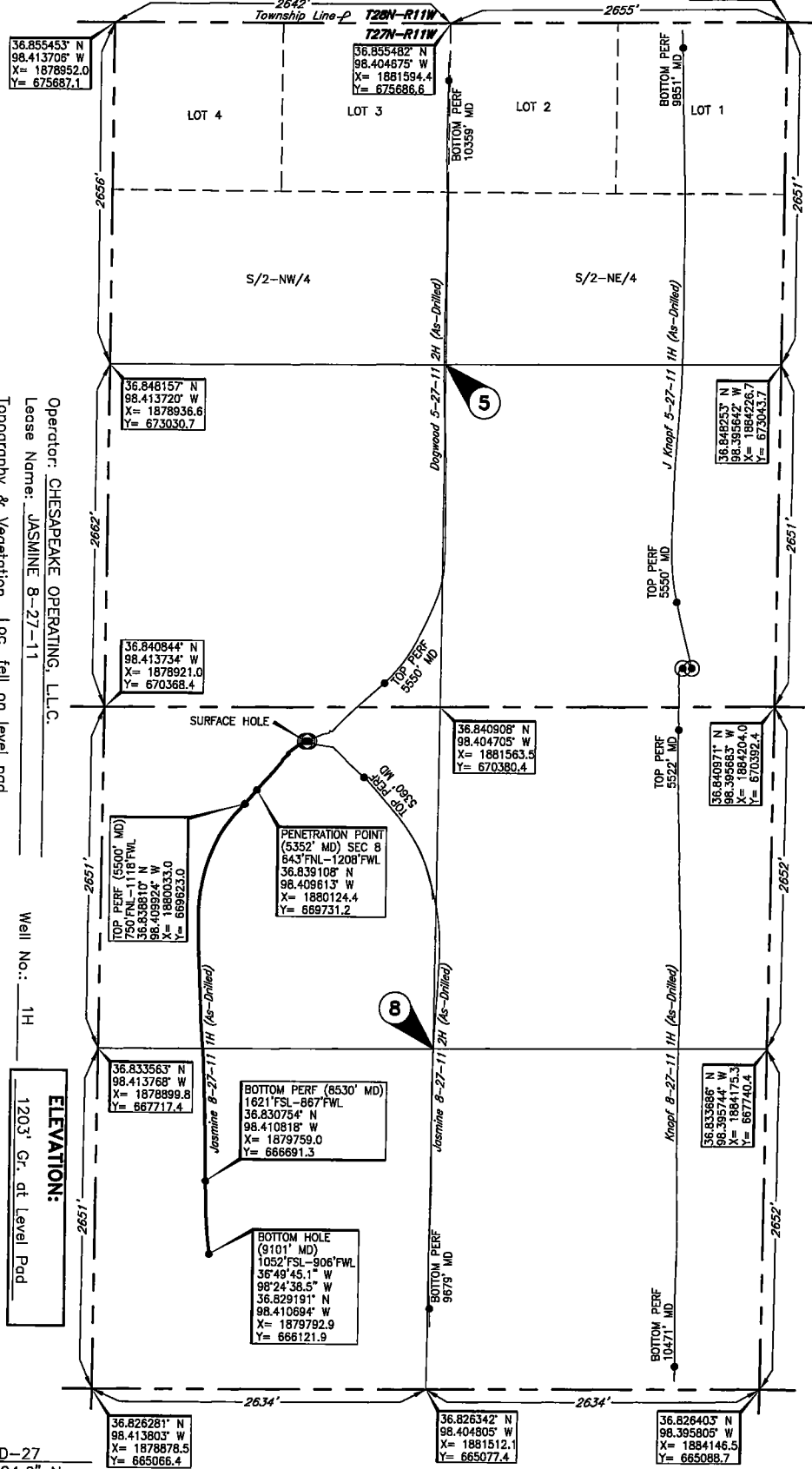
This information was gathered with a GPS receiver with a 1 foot horizontal accuracy.

DATUM: NAD-27
 LAT: 36°50'24.6" N
 LONG: 98°24'30.0" W
 LAT: 36.840154° N
 LONG: 98.408339° W
 STATE PLANE COORDINATES: (US Feet)
 ZONE: OK NORTH
 X: 1880499.0
 Y: 670110.5

268608 Date of Drawing: Dec. 01, 2016
 Invoice # 240162B Date Staked: Feb. 25, 2015 JP

FINAL AS-DRILLED PLAT

AS-DRILLED INFORMATION
 FURNISHED BY CHESAPEAKE OPERATING, L.L.C.



36.826281° N
 98.413803° W
 X= 1878878.5
 Y= 665066.4

36.826342° N
 98.404805° W
 X= 1881512.1
 Y= 665077.4

36.826403° N
 98.395805° W
 X= 1884145.5
 Y= 665098.7