

Oklahoma Corporation Commission
Oil & Gas Conservation Division
Post Office Box 52000
Oklahoma City, Oklahoma 73152-2000
Rule 165: 10-3-25

Form 1002A

API No.: 35003231920001

Completion Report

Spud Date: April 14, 2015

OTC Prod. Unit No.: 003-218161

Drilling Finished Date: June 20, 2015

1st Prod Date: December 01, 2016

Amended

Completion Date: November 01, 2016

Amend Reason: SHOW COMPLETION / CORRECT BOTTOM HOLE LOCATION

Drill Type: HORIZONTAL HOLE

Min Gas Allowable: Yes

Well Name: DOGWOOD 5-27-11 2H

Purchaser/Measurer: CHESAPEAKE OPERATING LLC

Location: ALFALFA 8 27N 11W
NW NW NE NW
265 FNL 1595 FWL of 1/4 SEC
Derrick Elevation: 1226 Ground Elevation: 1203

First Sales Date: 12/01/2016

Operator: CHESAPEAKE OPERATING LLC 17441
PO BOX 18496
6100 N WESTERN AVE
OKLAHOMA CITY, OK 73154-0496

Completion Type		Location Exception		Increased Density	
X	Single Zone	Order No		Order No	
	Multiple Zone	639221		639219	
	Commingled				

Casing and Cement							
Type	Size	Weight	Grade	Feet	PSI	SAX	Top of CMT
SURFACE	13 3/8	48	J-55	365		335	SURFACE
INTERMEDIATE	9 5/8	36	J-55	1197		390	SURFACE
PRODUCTION	7	26	P-110EC	5585		275	2795

Liner								
Type	Size	Weight	Grade	Length	PSI	SAX	Top Depth	Bottom Depth
LINER	4 1/2	11.60	P-110EC	5199	0	605	5301	10500

Total Depth: 10500

Packer	
Depth	Brand & Type
5241	AS-3

Plug	
Depth	Plug Type
There are no Plug records to display.	

Initial Test Data

Test Date	Formation	Oil BBL/Day	Oil-Gravity (API)	Gas MCF/Day	Gas-Oil Ratio Cu FT/BBL	Water BBL/Day	Pumpin or Flowing	Initial Shut-In Pressure	Choke Size	Flow Tubing Pressure
Dec 17, 2016	MISSISSIPPIAN	376		722	1920	989	ARTIFICIA			124

Completion and Test Data by Producing Formation

Formation Name: MISSISSIPPIAN

Code: 359MSSP

Class: OIL

Spacing Orders

Order No	Unit Size
613181	640

Perforated Intervals

From	To
5550	10359

Acid Volumes

12,000 GALLONS HCL ACID

Fracture Treatments

42,457 BARRELS FRAC FLUID

Formation	Top
MISSISSIPPIAN	5376

Were open hole logs run? No

Date last log run:

Were unusual drilling circumstances encountered? No

Explanation:

Other Remarks

OCC - THIS DOCUMENT IS ACCEPTED BASED ON THE DATA SUBMITTED THE FINAL LOCATION EXCEPTION HAS NOT BEEN ISSUED.

Lateral Holes

Sec: 5 TWP: 27N RGE: 11W County: ALFALFA

NE NE NE NW

305 FNL 2631 FWL of 1/4 SEC

Depth of Deviation: 4793 Radius of Turn: 401 Direction: 360 Total Length: 5124

Measured Total Depth: 10500 True Vertical Depth: 5194 End Pt. Location From Release, Unit or Property Line: 305

FOR COMMISSION USE ONLY

1135549

Status: Accepted

PLEASE TYPE OR USE BLACK INK ONLY
FORMATION RECORD

Give formation names and tops, if available, or descriptions and thickness of formations drilled through. Show intervals cored or drillstem tested.

LEASE NAME DOGWOOD 5-27-11

WELL NO. 2H

NAMES OF FORMATIONS	TOP
MISSISSIPPIAN	5,376

FOR COMMISSION USE ONLY

ITD on file YES NO

APPROVED _____ DISAPPROVED _____

2) Reject Codes

Were open hole logs run? yes no

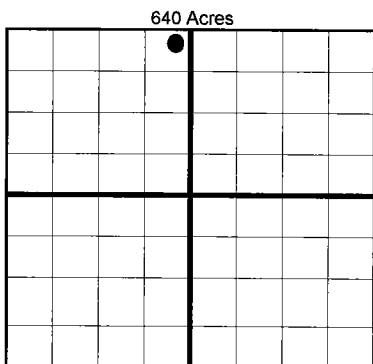
Date Last log was run N/A

Was CO₂ encountered? yes no at what depths?

Was H₂S encountered? yes no at what depths?

Were unusual drilling circumstances encountered? ___ yes no
If yes, briefly explain.

Other remarks:



BOTTOM HOLE LOCATION FOR DIRECTIONAL HOLE

SEC	TWP	RGE	COUNTY			
Spot Location	1/4	1/4	1/4	Feet From 1/4 Sec Lines	FSL	FWL
Measured Total Depth	True Vertical Depth		BHL From Lease, Unit, or Property Line:			

BOTTOM HOLE LOCATION FOR HORIZONTAL HOLE: (LATERALS)

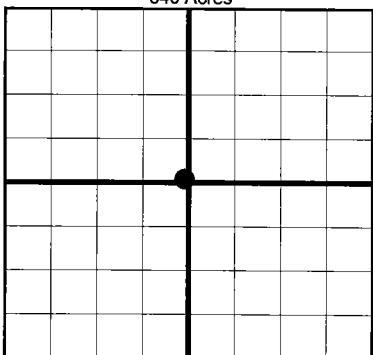
LATERAL #1

SEC	TWP	RGE	COUNTY					
5	27N	11W	ALFALFA					
Spot Location	NE 1/4	NE 1/4	NE 1/4	NW 1/4	Feet From 1/4 Sec Lines	FNL 305	FWL 2,631	
Depth of Deviation	4,793		Radius of Turn	401	Direction	360	Total Length	5,124
Measured Total Depth	10,500		True Vertical Depth	5,194		BHL From Lease, Unit, or Property Line:		305

If more than three drainholes are proposed, attach a separate sheet indicating the necessary information.

Direction must be stated in degrees azimuth. Please note, the horizontal drainhole and its end point must be located within the boundaries of the lease or spacing unit.

Directional surveys are required for all drainholes and directional wells.



LATERAL #2

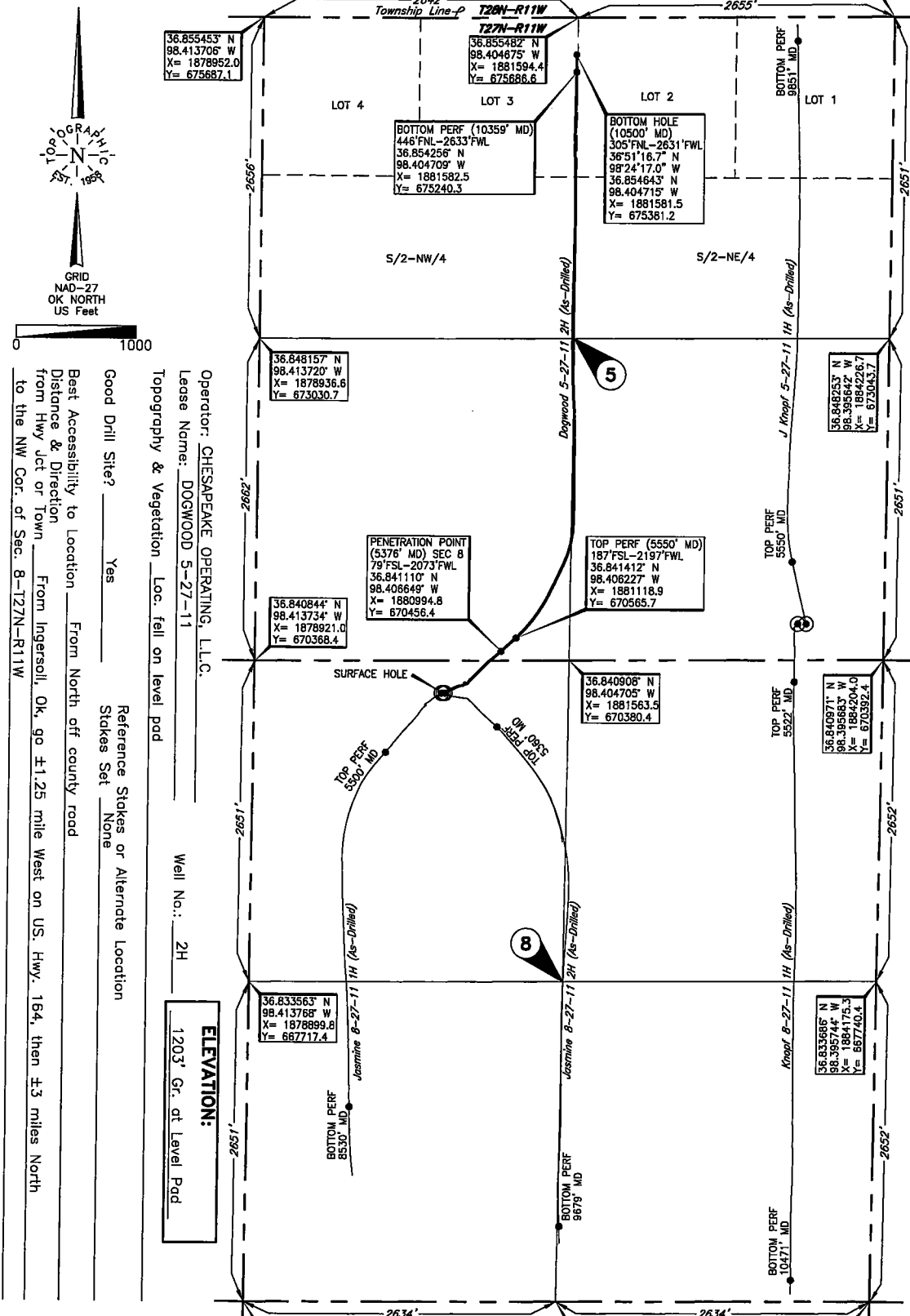
SEC	TWP	RGE	COUNTY				
Spot Location	1/4	1/4	1/4	1/4	Feet From 1/4 Sec Lines	FSL	FWL
Depth of Deviation	Radius of Turn		Direction		Total Length		
Measured Total Depth	True Vertical Depth		BHL From Lease, Unit, or Property Line:				

LATERAL #3

SEC	TWP	RGE	COUNTY				
Spot Location	1/4	1/4	1/4	Feet From 1/4 Sec Lines	FSL	FWL	
Depth of Deviation	Radius of Turn		Direction		Total Length		
Measured Total Depth	True Vertical Depth		BHL From Lease, Unit, or Property Line:				

ALFALFA County, Oklahoma
 265' FNL-1595' FWL Section 8 Township 27N Range 11W I.M.

36.855535° N
 98.395801° W
 X = 1884249.5
 Y = 675695.1



Operator: CHESAPEAKE OPERATING, L.L.C.
 Lease Name: DOGWOOD 5-27-11
 Topography & Vegetation Loc. fell on level pad
 Good Drill Site? Yes
 Reference Stakes or Alternate Location Stakes Set None
 Best Accessibility to Location From North off county road
 Distance & Direction from Hwy lot or Town From Ingersoll, Ok, go ±1.25 mile West on US Hwy. 164, then ±3 miles North to the NW Cor. of Sec. 8-127N-R11W

Well No.: 2H
 ELEVATION:
 1203' Gr. at Level Pad

DATUM: NAD-27
 LAT: 36°50'24.6" N
 LONG: 98°24'29.8" W
 LAT: 36.840155° N
 LONG: 98.408288° W
 STATE PLANE
 COORDINATES: (US Feet)
 ZONE: OK NORTH
 X: 1880513.8
 Y: 670110.7

36.826281° N 98.413803° W X = 1878878.5 Y = 665086.4
 36.826342° N 98.404805° W X = 1881512.1 Y = 665077.4
 36.826403° N 98.395805° W X = 1884146.5 Y = 665088.7

268610 Date of Drawing: Dec. 01, 2016
 Invoice # 240162A Date Staked: Feb. 25, 2015 JP

FINAL AS-DRILLED PLAT

AS-DRILLED INFORMATION
 FURNISHED BY CHESAPEAKE OPERATING, L.L.C.

This information was gathered with a GPS receiver with ±1 foot horizontal accuracy