

Oklahoma Corporation Commission  
Oil & Gas Conservation Division  
Post Office Box 52000  
Oklahoma City, Oklahoma 73152-2000  
Rule 165: 10-3-25

Form 1002A

API No.: 35151243870001

**Completion Report**

Spud Date: May 03, 2015

OTC Prod. Unit No.: 151-218157

Drilling Finished Date: May 15, 2015

1st Prod Date: November 23, 2016

**Amended**

Completion Date: November 03, 2016

Amend Reason: SHOW COMPLETION

**Drill Type: HORIZONTAL HOLE**

Min Gas Allowable: Yes

Well Name: GREGORY 1-27-13 1H

Purchaser/Measurer: CHESAPEAKE OPERATING LLC

Location: WOODS 12 27N 13W  
NW NE NW NE  
200 FNL 1965 FEL of 1/4 SEC  
Derrick Elevation: 1285 Ground Elevation: 1263

First Sales Date: 11/23/2016

Operator: CHESAPEAKE OPERATING LLC 17441  
PO BOX 18496  
6100 N WESTERN AVE  
OKLAHOMA CITY, OK 73154-0496

Completion Type		Location Exception		Increased Density	
X	Single Zone	Order No		Order No	
	Multiple Zone	639022		640275	
	Commingled				

Casing and Cement							
Type	Size	Weight	Grade	Feet	PSI	SAX	Top of CMT
SURFACE	13 3/8	48	J-55	690		570	SURFACE
INTERMEDIATE	9 5/8	36	J-55	1198		319	SURFACE
PRODUCTION	7	26	P-110EC	5593		222	3844

Liner								
Type	Size	Weight	Grade	Length	PSI	SAX	Top Depth	Bottom Depth
LINER	4 1/2	11.6	P-110EC	5118	0	499	5344	10462

**Total Depth: 10464**

Packer	
Depth	Brand & Type
5268	AS-3

Plug	
Depth	Plug Type
There are no Plug records to display.	

Initial Test Data

Test Date	Formation	Oil BBL/Day	Oil-Gravity (API)	Gas MCF/Day	Gas-Oil Ratio Cu FT/BBL	Water BBL/Day	Pumpin or Flowing	Initial Shut-In Pressure	Choke Size	Flow Tubing Pressure
Dec 14, 2016	MISSISSIPPI	152		1180	7763	1827	ARTIFICIA			180

**Completion and Test Data by Producing Formation**

Formation Name: MISSISSIPPI

Code: 351MISS

Class: OIL

**Spacing Orders**

Order No	Unit Size
584640	640

**Perforated Intervals**

From	To
5397	10323

**Acid Volumes**

8,500 GALLONS HCL ACID

**Fracture Treatments**

40,031 BARRELS FRAC FLUID, 216,995 POUNDS PROPPANT

Formation	Top
MISSISSIPPI	5346

Were open hole logs run? No

Date last log run:

Were unusual drilling circumstances encountered? No

Explanation:

**Other Remarks**

OCC - THIS DOCUMENT IS ACCEPTED BASED ON THE DATA SUBMITTED THE FINAL LOCATION EXCEPTION HAS NOT BEEN ISSUED.

**Lateral Holes**

Sec: 1 TWP: 27N RGE: 13W County: WOODS

NW NW NW NE

176 FNL 2639 FEL of 1/4 SEC

Depth of Deviation: 4866 Radius of Turn: 401 Direction: 357 Total Length: 5118

Measured Total Depth: 10464 True Vertical Depth: 5267 End Pt. Location From Release, Unit or Property Line: 176

**FOR COMMISSION USE ONLY**

1135565

Status: Accepted

API NO. 35-151-24387  
 OTC PROD.  
 UNIT NO. 151-218157

PLEASE TYPE OR USE BLACK INK ONLY  
 NOTE: Attach copy of original 1002A if recompletion or reentry.

**OKLAHOMA CORPORATION COMMISSION**  
 Oil & Gas Conservation Division  
 Post Office Box 52000  
 Oklahoma City, Oklahoma 73152-2000  
 Rule 165-10-3-25

**RECEIVED** Form 1002A Rev. 2009

DEC 22 2016

**OKLAHOMA CORPORATION COMMISSION**

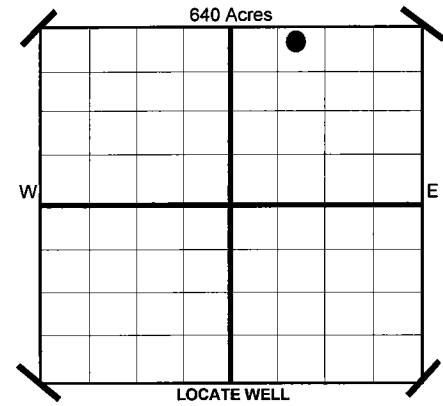
ORIGINAL  
 AMENDED  
 Reason Amended **Show Completion**

**COMPLETION REPORT**

TYPE OF DRILLING OPERATION  
 STRAIGHT HOLE  DIRECTIONAL HOLE  HORIZONTAL HOLE  
 SERVICE WELL  
 If directional or horizontal, see reverse for bottom hole location.

COUNTY	WOODS	SEC	12	TWP	27N	RGE	13W
LEASE NAME	GREGORY 1-27-13		WELL NO	1H			
SHL	NW 1/4	NE 1/4	NW 1/4	NE 1/4	FNL	FEL OF	
ELEVATION	Derrick Fl 1,285		Ground 1,263	Latitude (if Known)	200	1/4 SEC	1,965
OPERATOR NAME	CHESAPEAKE OPERATING, L.L.C.			OTC/OCC OPERATOR NO.	17441		
ADDRESS	P.O. BOX 18496						
CITY	OKLAHOMA CITY		STATE	OK		ZIP	73154

SPUD DATE	5/3/2015
DRLG FINISHED DATE	5/15/2015
DATE OF WELL COMPLETION	11/3/2016
1ST PROD DATE	11/23/2016
RECOMP DATE	
Longitude (if Known)	



**COMPLETION TYPE**

<input checked="" type="checkbox"/>	SINGLE ZONE
<input type="checkbox"/>	MULTIPLE ZONE Application Date
<input type="checkbox"/>	COMMINGLED Application Date
LOCATION EXCEPTION ORDER NO. 639022 (INTERIM)	
INCREASED DENSITY ORDER NO. 640275	

**CASING & CEMENT (Form 1002C must be attached)**

	TYPE	SIZE	WEIGHT	GRADE	FEET	PSI	SAX	TOP	
CONDUCTOR									
SURFACE		13 3/8"	48#	J-55	690		570	SURFACE	
INTERMEDIATE		9 5/8"	36#	J-55	1,198		319	SURFACE	
PRODUCTION		7"	26#	P-110EC	5,593		222	3,844	
LINER		4 1/2"	11.6#	P-110EC	5,344-10,462		499	5,344	
								TOTAL DEPTH	10,464

PACKER @ 5.268 BRAND & TYPE AS-3  
 PACKER @ \_\_\_\_\_ BRAND & TYPE \_\_\_\_\_

PLUG @ \_\_\_\_\_ TYPE \_\_\_\_\_ PLUG @ \_\_\_\_\_ TYPE \_\_\_\_\_  
 PLUG @ \_\_\_\_\_ TYPE \_\_\_\_\_ PLUG @ \_\_\_\_\_ TYPE \_\_\_\_\_

**COMPLETION & TEST DATA BY PRODUCING FORMATION**

FORMATION	Mississippi							<i>Reported Flow Focus</i>
SPACING & SPACING ORDER NUMBER	640 584640							
CLASS: Oil, Gas, Dry, Inj, Disp, Comm Disp, Svc	Oil							
PERFORATED INTERVALS	5397 - 10,323							
ACID/VOLUME	HCL Acid 8500 Gals							
FRACTURE TREATMENT (Fluids/Prop Amounts)	Frac Fluid 40,031 Bbls Proppant 216,995 Lbs							

Minimum Gas Allowable (165:10-17-7)  
 OR Oil Allowable (165:10-13-3)

Gas Purchaser/Masurer Chesapeake Operating, L.L.C.  
 1st Sales Date 11/23/2016

**INITIAL TEST DATA**

INITIAL TEST DATE	12/14/2016
OIL-BBL/DAY	152
OIL-GRAVITY (API)	
GAS-MCF/DAY	1,180
GAS-OIL RATIO CU FT/BBL	7,763
WATER-BBL/DAY	1827
PUMPING OR FLOWING	Artificial Lift
INITIAL SHUT-IN PRESSURE	
CHOKE SIZE	
FLOW TUBING PRESSURE	180

**AS SUBMITTED**

A record of the formations drilled through, and pertinent remarks are presented on the reverse. I declare that I have knowledge of the contents of this report and am authorized by my organization to make this report, which was prepared by me or under my supervision and direction, with the data and facts stated herein to be true, correct, and complete to the best of my knowledge and belief.

Sara Everett Signature  
 Sara Everett, Regulatory Analyst NAME (PRINT OR TYPE)  
 12/20/2016 DATE 405-848-8000 PHONE NUMBER  
 P.O. BOX 18496 OKLAHOMA CITY OK 73154  
 ADDRESS CITY STATE ZIP EMAIL ADDRESS sara.everett@chk.com

PLEASE TYPE OR USE BLACK INK ONLY  
FORMATION RECORD

Give formation names and tops, if available, or descriptions and thickness of formations drilled through. Show intervals cored or drillstem tested.

LEASE NAME GREGORY 1-27-13

WELL NO. 1H

NAMES OF FORMATIONS	TOP
MISSISSIPPI	5,346

FOR COMMISSION USE ONLY

ITD on file  YES  NO

APPROVED \_\_\_\_\_ DISAPPROVED \_\_\_\_\_

2) Reject Codes

\_\_\_\_\_

\_\_\_\_\_

\_\_\_\_\_

\_\_\_\_\_

Were open hole logs run? yes  no

Date Last log was run N/A

Was CO<sub>2</sub> encountered? yes  no  at what depths?

Was H<sub>2</sub>S encountered? yes  no  at what depths?

Were unusual drilling circumstances encountered? yes  no   
If yes, briefly explain.

Other remarks:

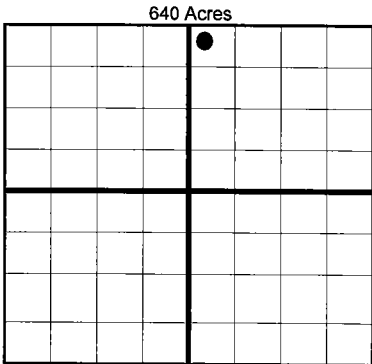
\_\_\_\_\_

\_\_\_\_\_

\_\_\_\_\_

\_\_\_\_\_

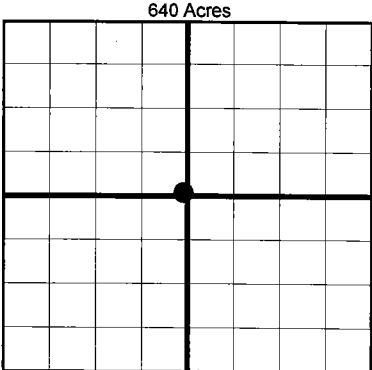
\_\_\_\_\_



If more than three drainholes are proposed, attach a separate sheet indicating the necessary information.

Direction must be stated in degrees azimuth. Please note, the horizontal drainhole and its end point must be located within the boundaries of the lease or spacing unit.

**Directional surveys are required for all drainholes and directional wells.**



**BOTTOM HOLE LOCATION FOR DIRECTIONAL HOLE**

SEC	TWP	RGE	COUNTY			
Spot Location				Feet From 1/4 Sec Lines	FSL	FWL
1/4	1/4	1/4	1/4			
Measured Total Depth		True Vertical Depth		BHL From Lease, Unit, or Property Line:		

**BOTTOM HOLE LOCATION FOR HORIZONTAL HOLE: (LATERALS)**

SEC	TWP	RGE	COUNTY			
1	27N	13W	WOODS			
Spot Location				Feet From 1/4 Sec Lines	FNL	FEL
NW 1/4	NW 1/4	NW 1/4	NE 1/4	176	2,639	
Depth of Deviation		Radius of Turn		Direction	Total Length	
4,866		401		357	5,118	
Measured Total Depth		True Vertical Depth		BHL From Lease, Unit, or Property Line:		
10,464		5,267		176		

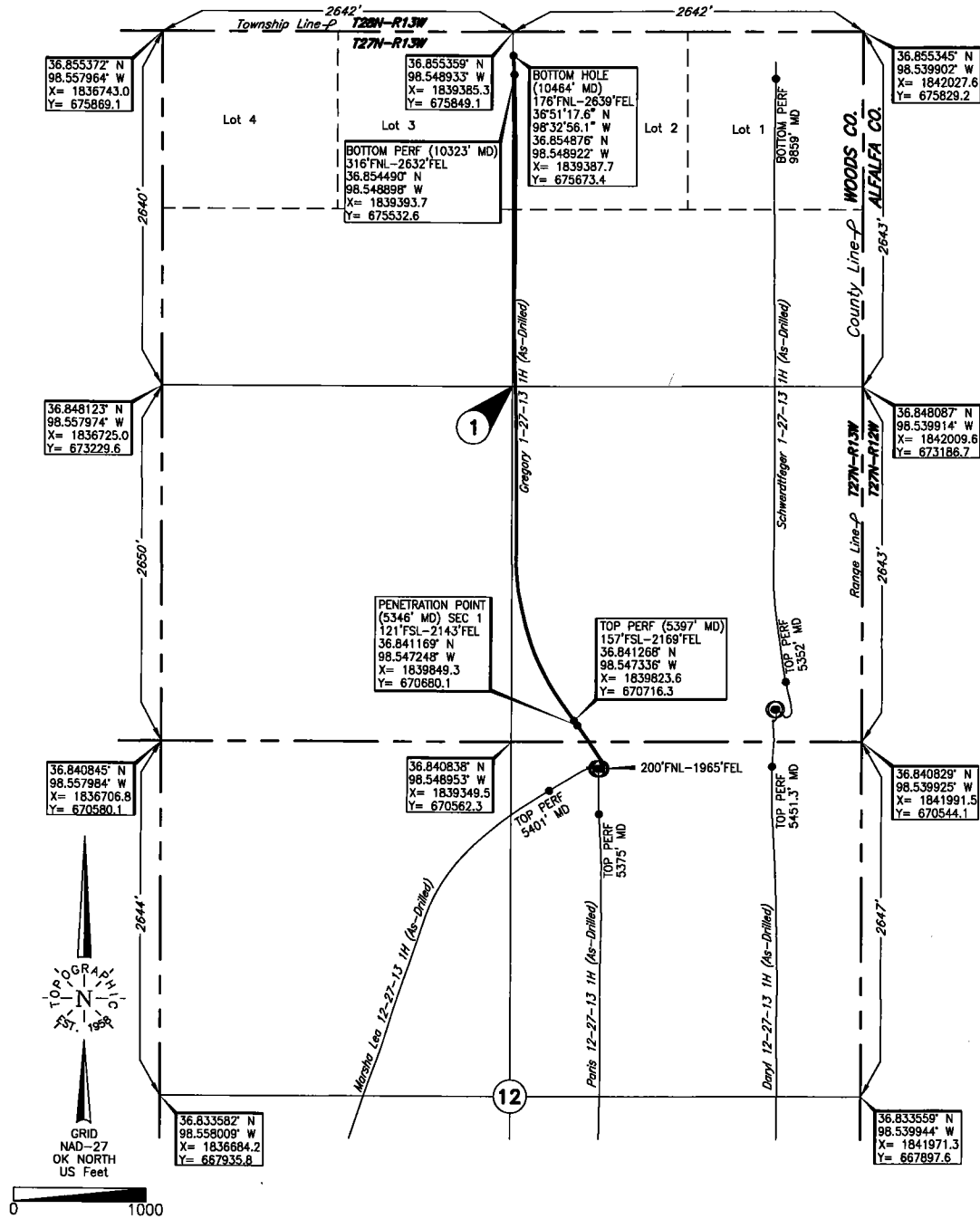
**LATERAL #2**

SEC	TWP	RGE	COUNTY			
Spot Location				Feet From 1/4 Sec Lines	FSL	FWL
1/4	1/4	1/4	1/4			
Depth of Deviation		Radius of Turn		Direction	Total Length	
Measured Total Depth		True Vertical Depth		BHL From Lease, Unit, or Property Line:		

**LATERAL #3**

SEC	TWP	RGE	COUNTY			
Spot Location				Feet From 1/4 Sec Lines	FSL	FWL
1/4	1/4	1/4	1/4			
Depth of Deviation		Radius of Turn		Direction	Total Length	
Measured Total Depth		True Vertical Depth		BHL From Lease, Unit, or Property Line:		

WOODS County, Oklahoma  
 200'FNL-1965'FEL Section 12 Township 27N Range 13W I.M.



Operator: CHESAPEAKE OPERATING, L.L.C.  
 Lease Name: GREGORY 1-27-13 Well No.: 1H **ELEVATION:** 1263' Gr. at Level Pad  
 Topography & Vegetation Loc. fell on the Paris 12-27-13 1H existing pad with wellhead in between two proposed stakes  
 Good Drill Site? Yes Reference Stakes or Alternate Location Stakes Set None  
 Best Accessibility to Location From North off county road  
 Distance & Direction From the Jct. of US. Hwy. 281 North & US. Hwy. 64 E-W, East side of Alva,  
Ok, go ±3 miles North on US. Hwy. 281, then ±6 miles East to the NE Cor. of Sec. 12-T27N-R13W

(This information was gathered with a GPS receiver with ±1 foot Horiz./Vert. accuracy)  
 DATUM: NAD-27  
 LAT: 36°50'25.0" N  
 LONG: 98°32'47.9" W  
 LAT: 36.840286° N  
 LONG: 98.546641° W  
 STATE PLANE COORDINATES: (US Feet)  
 ZONE: OK NORTH  
 X: 1840025.0  
 Y: 670357.6

268214 Date of Drawing: Nov. 18, 2016  
 Invoice # 239536 Date Staked: Jan. 30, 2015 JP

## FINAL AS-DRILLED PLAT

AS-DRILLED INFORMATION  
 FURNISHED BY CHESAPEAKE OPERATING, L.L.C.