

Oklahoma Corporation Commission
 Oil & Gas Conservation Division
 Post Office Box 52000
 Oklahoma City, Oklahoma 73152-2000
 Rule 165: 10-3-25

Form 1002A

API No.: 35151243840001

Completion Report

Spud Date: April 21, 2015

OTC Prod. Unit No.: 151-218156

Drilling Finished Date: May 03, 2015

Amended

1st Prod Date: November 23, 2016

Amend Reason: SHOW COMPLETION

Completion Date: November 04, 2016

Drill Type: HORIZONTAL HOLE

Min Gas Allowable: Yes

Well Name: MARSHA LEA 12-27-13 1H

Purchaser/Measurer: CHESAPEAKE OPERATING LLC

Location: WOODS 12 27N 13W
 NE NW NW NE
 200 FNL 1995 FEL of 1/4 SEC
 Derrick Elevation: 1285 Ground Elevation: 1263

First Sales Date: 11/23/2016

Operator: CHESAPEAKE OPERATING LLC 17441
 PO BOX 18496
 6100 N WESTERN AVE
 OKLAHOMA CITY, OK 73154-0496

Completion Type		Location Exception		Increased Density	
X	Single Zone	Order No		Order No	
	Multiple Zone	659860		639286	
	Commingled				

Casing and Cement							
Type	Size	Weight	Grade	Feet	PSI	SAX	Top of CMT
SURFACE	13 3/8	48	J-55	694		704	SURFACE
INTERMEDIATE	9 5/8	36	J-55	1221		319	SURFACE
PRODUCTION	7	26	P-110EC	5619		224	3227

Liner								
Type	Size	Weight	Grade	Length	PSI	SAX	Top Depth	Bottom Depth
LINER	4 1/2	11.6	HCP-110	5422	0	531	5381	10803

Total Depth: 10805

Packer	
Depth	Brand & Type
5303	AS-3

Plug	
Depth	Plug Type
There are no Plug records to display.	

Initial Test Data

Test Date	Formation	Oil BBL/Day	Oil-Gravity (API)	Gas MCF/Day	Gas-Oil Ratio Cu FT/BBL	Water BBL/Day	Pumpin or Flowing	Initial Shut-In Pressure	Choke Size	Flow Tubing Pressure
Dec 14, 2015	MISSISSIPPIAN	98		1165	11888	2133	ARTIFICIA			160

Completion and Test Data by Producing Formation

Formation Name: MISSISSIPPIAN

Code: 359MSSP

Class: OIL

Spacing Orders

Order No	Unit Size
593710	640

Perforated Intervals

From	To
5401	10668

Acid Volumes

6,525 GALLONS HCL ACID

Fracture Treatments

42,830 BARRELS FRAC FLUID, 433,065 POUNDS PROPPANT

Formation	Top
MISSISSIPPIAN	5334

Were open hole logs run? No

Date last log run:

Were unusual drilling circumstances encountered? No

Explanation:

Other Remarks

There are no Other Remarks.

Lateral Holes

Sec: 12 TWP: 27N RGE: 13W County: WOODS

SW SE SW SW

175 FSL 662 FWL of 1/4 SEC

Depth of Deviation: 4898 Radius of Turn: 452 Direction: 201 Total Length: 5471

Measured Total Depth: 10805 True Vertical Depth: 5350 End Pt. Location From Release, Unit or Property Line: 175

FOR COMMISSION USE ONLY

1135564

Status: Accepted

PLEASE TYPE OR USE BLACK INK ONLY
FORMATION RECORD

Give formation names and tops, if available, or descriptions and thickness of formations drilled through. Show intervals cored or drillstem tested.

LEASE NAME MARSHA LEA 12-27-13

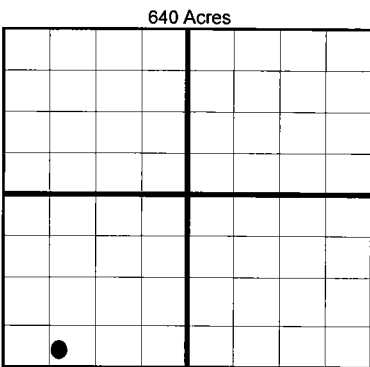
WELL NO. 1H

NAMES OF FORMATIONS	TOP
MISSISSIPPIAN	5,334

FOR COMMISSION USE ONLY	
ITD on file	<input type="checkbox"/> YES <input type="checkbox"/> NO
APPROVED	DISAPPROVED
2) Reject Codes	

Were open hole logs run?	yes	<input checked="" type="checkbox"/> no
Date Last log was run	N/A	
Was CO ₂ encountered?	yes	<input checked="" type="checkbox"/> no at what depths?
Was H ₂ S encountered?	yes	<input checked="" type="checkbox"/> no at what depths?
Were unusual drilling circumstances encountered?	yes	<input checked="" type="checkbox"/> no
If yes, briefly explain.		

Other remarks:



BOTTOM HOLE LOCATION FOR DIRECTIONAL HOLE

SEC	TWP	RGE	COUNTY						
Spot Location				1/4	1/4	1/4	Feet From 1/4 Sec Lines	FSL	FWL
Measured Total Depth		True Vertical Depth		BHL From Lease, Unit, or Property Line:					

BOTTOM HOLE LOCATION FOR HORIZONTAL HOLE: (LATERALS)

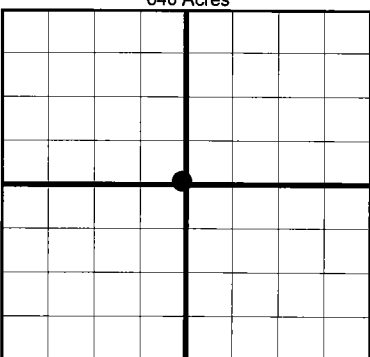
LATERAL #1

SEC	TWP	RGE	COUNTY							
12	27N	13W	WOODS							
Spot Location				SW 1/4	SE 1/4	SW 1/4	SW 1/4	Feet From 1/4 Sec Lines	FSL 175	FWL 662
Depth of Deviation		Radius of Turn		Direction		Total Length				
4,898		452		201		5,471				
Measured Total Depth		True Vertical Depth		BHL From Lease, Unit, or Property Line:						
10,805		5,350		175						

If more than three drainholes are proposed, attach a separate sheet indicating the necessary information.

Direction must be stated in degrees azimuth. Please note, the horizontal drainhole and its end point must be located within the boundaries of the lease or spacing unit.

Directional surveys are required for all drainholes and directional wells.



LATERAL #2

SEC	TWP	RGE	COUNTY							
Spot Location				1/4	1/4	1/4	1/4	Feet From 1/4 Sec Lines	FSL	FWL
Depth of Deviation		Radius of Turn		Direction		Total Length				
Measured Total Depth		True Vertical Depth		BHL From Lease, Unit, or Property Line:						

LATERAL #3

SEC	TWP	RGE	COUNTY							
Spot Location				1/4	1/4	1/4	1/4	Feet From 1/4 Sec Lines	FSL	FWL
Depth of Deviation		Radius of Turn		Direction		Total Length				
Measured Total Depth		True Vertical Depth		BHL From Lease, Unit, or Property Line:						

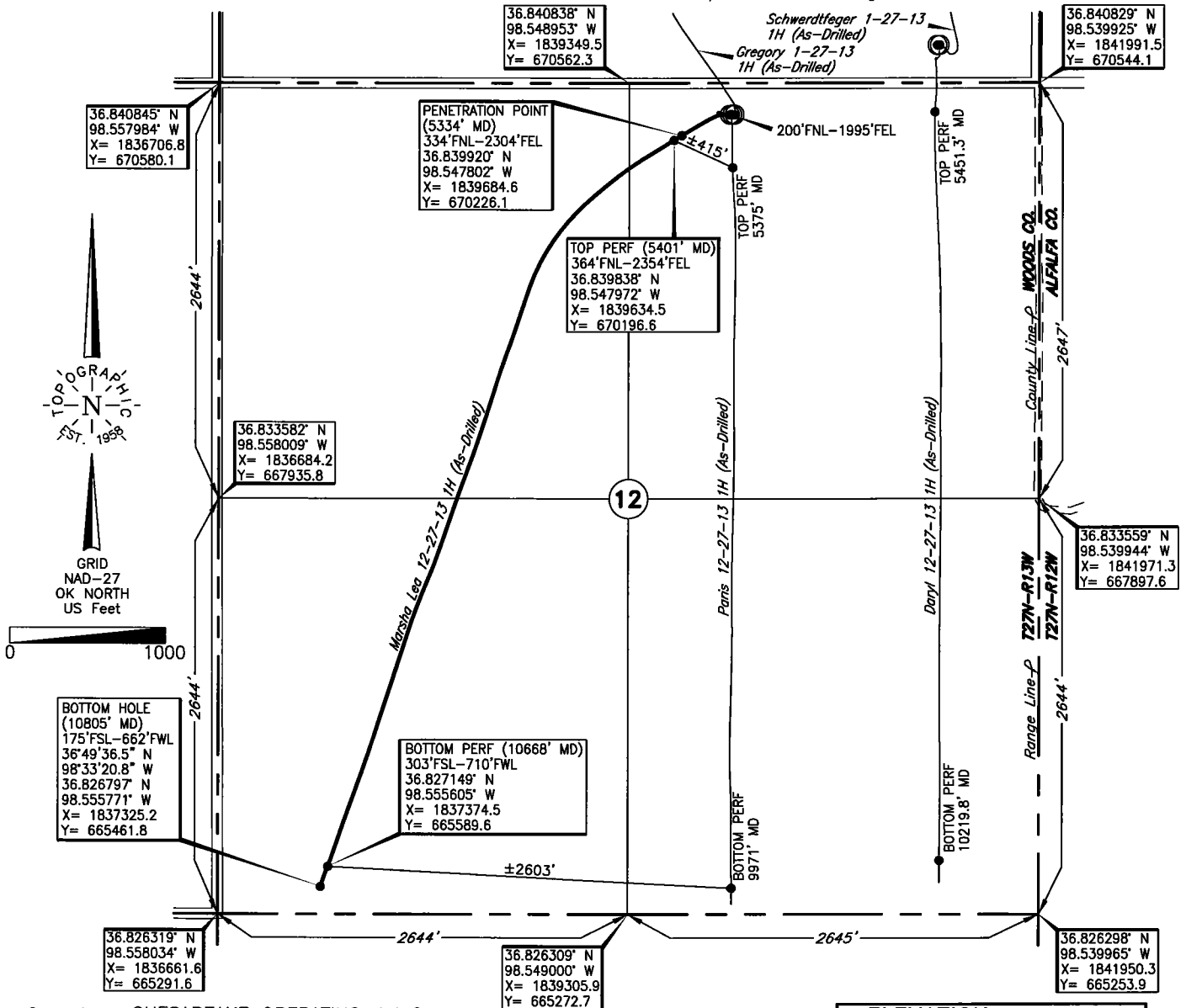
TOPOGRAPHIC LAND SURVEYORS OF OKLAHOMA

6709 NORTH CLASSEN BLVD., OKLA. CITY, OKLA. 73116 * LOCAL (405) 843-4847 * OUT OF STATE (800) 654-3219
 Certificate of Authorization No. 1293, L.S.

WOODS

County, Oklahoma

200'FNL-1995'FEL Section 12 Township 27N Range 13W I.M.



Operator: CHESAPEAKE OPERATING, L.L.C.

Lease Name: MARSHA LEA 12-27-13

Well No.: 1H

ELEVATION:

1263' Gr. at Level Pad

Topography & Vegetation Loc. fell on the Paris 12-27-13 1H existing pad with wellhead in between two proposed stakes

Good Drill Site? Yes Reference Stakes or Alternate Location Stakes Set None

Best Accessibility to Location From North off county road

Distance & Direction From the Jct. of US. Hwy. 281 North & US. Hwy. 64 E-W, East side of Alva,

Ok, go ±3 miles North on US. Hwy. 281, then ±6 miles East to the NE Cor. of Sec. 12-T27N-R13W

DATUM: NAD-27
 LAT: 36°50'25.0"N
 LONG: 98°32'48.3"W
 LAT: 36.840286° N
 LONG: 98.546744° W
 STATE PLANE
 COORDINATES: (US Feet)
 ZONE: OK NORTH
 X: 1839995.0
 Y: 670357.8

268215 Date of Drawing: Nov. 18, 2016
 Invoice # 239536A Date Staked: Jan. 30, 2015 JP

FINAL AS-DRILLED PLAT

AS-DRILLED INFORMATION
 FURNISHED BY CHESAPEAKE OPERATING, L.L.C.

This information was gathered with a GPS receiver with ±1 foot Horiz./Vert. accuracy.