

Oklahoma Corporation Commission
 Oil & Gas Conservation Division
 Post Office Box 52000
 Oklahoma City, Oklahoma 73152-2000
 Rule 165: 10-3-25

Form 1002A

API No.: 35017248530000

Completion Report

Spud Date: January 04, 2016

OTC Prod. Unit No.: 017217769

Drilling Finished Date: January 31, 2016

1st Prod Date: September 28, 2016

Completion Date: September 28, 2016

Drill Type: HORIZONTAL HOLE

Well Name: GUNDY 6-12H

Purchaser/Measurer: XEC

Location: CANADIAN 12 14N 10W
 NW SE SW SE
 434 FSL 1727 FEL of 1/4 SEC
 Derrick Elevation: 0 Ground Elevation: 1453

First Sales Date: 09/28/2016

Operator: CIMAREX ENERGY CO 21194

202 S CHEYENNE AVE STE 1000
 TULSA, OK 74103-3001

Completion Type	
X	Single Zone
	Multiple Zone
	Commingled

Location Exception	
Order No	
	645950
	645853

Increased Density	
Order No	
	645754

Casing and Cement							
Type	Size	Weight	Grade	Feet	PSI	SAX	Top of CMT
SURFACE	13 3/8	54.5	J55	585	2500	600	SURFACE
INTERMEDIATE	9 5/8	40	L80	9729	5000	760	7120
PRODUCTION	5 1/2	20	P110	15555	8000	1590	7650

Liner								
Type	Size	Weight	Grade	Length	PSI	SAX	Top Depth	Bottom Depth
There are no Liner records to display.								

Total Depth: 15555

Packer	
Depth	Brand & Type
There are no Packer records to display.	

Plug	
Depth	Plug Type
There are no Plug records to display.	

Initial Test Data

Test Date	Formation	Oil BBL/Day	Oil-Gravity (API)	Gas MCF/Day	Gas-Oil Ratio Cu FT/BBL	Water BBL/Day	Pumpin or Flowing	Initial Shut-In Pressure	Choke Size	Flow Tubing Pressure
Oct 07, 2016	MISSISSIPPIAN	139	57	2525	18139	1482	FLOWING	3877	16/64	

Completion and Test Data by Producing Formation

Formation Name: MISSISSIPPIAN

Code: 359MSSP

Class: GAS

Spacing Orders

Order No	Unit Size
645304	640

Perforated Intervals

From	To
10978	15549

Acid Volumes

There are no Acid Volume records to display.
--

Fracture Treatments

11263644 GALLONS TOTAL FLUID 13124749 LBS OF SAND
--

Formation	Top
MERAMEC	10968

Were open hole logs run? No

Date last log run:

Were unusual drilling circumstances encountered? No

Explanation:

Other Remarks

OCC: FLE ORDER HAS NOT BEEN ISSUED. WE HAVE ACCEPTED OPERATORS DATA AS SUBMITTED. IRREGULAR SECTION.

Lateral Holes

Sec: 12 TWP: 14N RGE: 10W County: CANADIAN

NE NW NW NE

309 FNL 2111 FEL of 1/4 SEC

Depth of Deviation: 10647 Radius of Turn: 320 Direction: 180 Total Length: 4056

Measured Total Depth: 15555 True Vertical Depth: 10967 End Pt. Location From Release, Unit or Property Line: 309

FOR COMMISSION USE ONLY

1134827

Status: Accepted

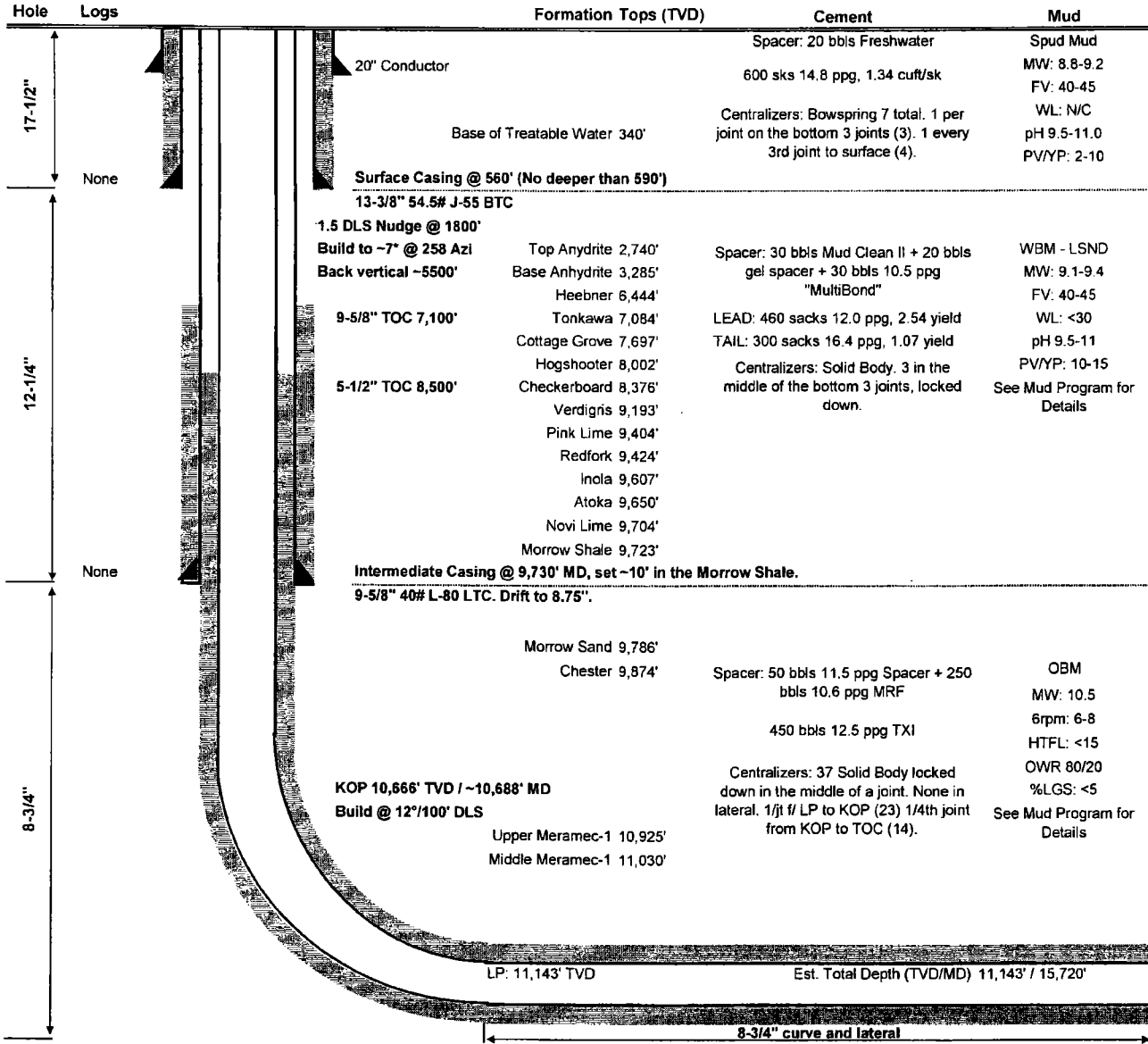


Gundy 6-12H

Wellhead: 13-3/8" SOW X 13-5/8" 5M
B Section: 13-5/8" 5M X 11" 10M
C Section: 11" 10M X 5-1/8" 15M
Tree: 2-9/16" 10M
Tubing: 2-3/8" 4.7# L80 8RD EUE
Rig: Unit 405
Cement: Baker
Directional: Baker
Mud: Baroid
Superintendent: Monte Thiems
Engineer: Spencer Bryant

Offset Wells

XEC Estep 1-1H (WDFD) 11/14 Unit 306
 XEC Leon 1-12H (WDFD) 4/11 H&P 118
 XEC Bomhoff 1H-11X (WDFD) 12/13 Cactus 144
 XEC Bomhoff 2-11H (MRMC) 2/14 Cactus 144
 QEP Virgie wells (9 WDFD wells) 13-14N-10W



Lower Meramec-1 11,210'

Production Casing:

5-1/2" 20# P110 LTC 0' - 10,000'

5-1/2" 20# P110 BTC 10,000' to TD

Marker Joints: 4 (KOP - 50', LP + 100', LP + 1300', LP + 2600')

Weatherford Double Valve Float Shoe with latch-down reciever (non rupturing disk in plug)

2/1/17

Oklahoma Corporation Commission
Oil & Gas Conservation Division
Post Office Box 52000
Oklahoma City, Oklahoma 73152-2000
Rule 165: 10-3-25

Form 1002A

1016EZ

API No.: 017248530000

Completion Report

Spud Date: January 04, 2016

OTC Prod. Unit No.: 017217769

Drilling Finished Date: January 31, 2016

1st Prod Date: September 28, 2016

Completion Date: September 28, 2016

A: 217769 I

Drill Type: HORIZONTAL HOLE

Well Name: GUNDY 6-12H

Purchaser/Measurer: XEC

Location: CANADIAN 12 14N 10W
NW SE SW SE
434 FSL 1727 FEL of 1/4 SEC
Derrick Elevation: 0 Ground Elevation: 1453

First Sales Date: 09/28/2016

Operator: CIMAREX ENERGY CO 21194

202 S CHEYENNE AVE STE 1000
TULSA, OK 74103-3001

Completion Type		Location Exception		Increased Density	
X	Single Zone	Order No		Order No	
	Multiple Zone	645950		645754	
	Commingled	645853			

645945:
sep. allow.

Casing and Cement							
Type	Size	Weight	Grade	Feet	PSI	SAX	Top of CMT
SURFACE	13 3/8	54.5	J55	585	2500	600	SURFACE
INTERMEDIATE	9 5/8	40	L80	9729	5000	760	7120
PRODUCTION	5 1/2	20	P110	15555	8000	1590	7650

Liner								
Type	Size	Weight	Grade	Length	PSI	SAX	Top Depth	Bottom Depth
There are no Liner records to display.								

Total Depth: 15555

Packer	
Depth	Brand & Type
There are no Packer records to display.	

Plug	
Depth	Plug Type
There are no Plug records to display.	

Initial Test Data

10/7/16

359MSSP

3877

January 17, 2017

1 of 2

ER

JR