

Oklahoma Corporation Commission  
Oil & Gas Conservation Division  
Post Office Box 52000  
Oklahoma City, Oklahoma 73152-2000  
Rule 165: 10-3-25

Form 1002A

API No.: 35073253510000

**Completion Report**

Spud Date: September 13, 2016

OTC Prod. Unit No.: 073-218044

Drilling Finished Date: September 25, 2016

1st Prod Date: November 05, 2016

Completion Date: October 19, 2016

**Drill Type: HORIZONTAL HOLE**

Min Gas Allowable: Yes

Well Name: HILL 2-18-6 1H

Purchaser/Measurer: CHESAPEAKE OPERATING LLC

Location: KINGFISHER 2 18N 6W  
SW SW SE SW  
255 FSL 1565 FWL of 1/4 SEC  
Derrick Elevation: 1195 Ground Elevation: 1164

First Sales Date: 11/05/2016

Operator: CHESAPEAKE OPERATING LLC 17441  
PO BOX 18496  
6100 N WESTERN AVE  
OKLAHOMA CITY, OK 73154-0496

Completion Type		Location Exception		Increased Density	
X	Single Zone	Order No		Order No	
	Multiple Zone	657972		There are no Increased Density records to display.	
	Commingled				

Casing and Cement							
Type	Size	Weight	Grade	Feet	PSI	SAX	Top of CMT
SURFACE	9 5/8	36	J-55	1478		610	SURFACE
PRODUCTION	7	26	P-110	6748		261	4318

Liner								
Type	Size	Weight	Grade	Length	PSI	SAX	Top Depth	Bottom Depth
LINER	4 1/2	13.5	P-110EC	4793	0	426	6566	11359

**Total Depth: 11361**

Packer	
Depth	Brand & Type
There are no Packer records to display.	

Plug	
Depth	Plug Type
11272	CIBP

Initial Test Data										
Test Date	Formation	Oil BBL/Day	Oil-Gravity (API)	Gas MCF/Day	Gas-Oil Ratio Cu FT/BBL	Water BBL/Day	Pumpin or Flowing	Initial Shut-In Pressure	Choke Size	Flow Tubing Pressure
Nov 06, 2016	OSWEGO	474		533	1124	1446	ARTIFICIA			518

**Completion and Test Data by Producing Formation**

Formation Name: OSWEGO

Code: 404OSWG

Class: OIL

**Spacing Orders**

Order No	Unit Size
646163	640

**Perforated Intervals**

From	To
6691	11263

**Acid Volumes**

857,325 GALLONS HCL ACID
--------------------------

**Fracture Treatments**

45,355 BARRELS FRAC FLUID, NO PROPPANT USED
---

Formation	Top
OSWEGO	6622

Were open hole logs run? No

Date last log run:

Were unusual drilling circumstances encountered? No

Explanation:

**Other Remarks**

There are no Other Remarks.

**Lateral Holes**

Sec: 2 TWP: 18N RGE: 6W County: KINGFISHER

NE NW NW NW

241 FNL 439 FWL of 1/4 SEC

Depth of Deviation: 5990 Radius of Turn: 345 Direction: 1 Total Length: 4739

Measured Total Depth: 11361 True Vertical Depth: 6335 End Pt. Location From Release, Unit or Property Line: 241

**FOR COMMISSION USE ONLY**

1135372

Status: Accepted

API NO. 35-073-25351  
 OTC PROD.  
 UNIT NO. 073-218044

PLEASE TYPE OR USE BLACK INK ONLY  
 NOTE:  
 Attach copy of original 1002A if recompletion or reentry.

OKLAHOMA CORPORATION COMMISSION

Oil & Gas Conservation Division  
 Post Office Box 52000  
 Oklahoma City, Oklahoma 73152-2000  
 Rule 165-10-3-25

RECEIVED Form 1002A Rev. 2009

DEC 09 2016

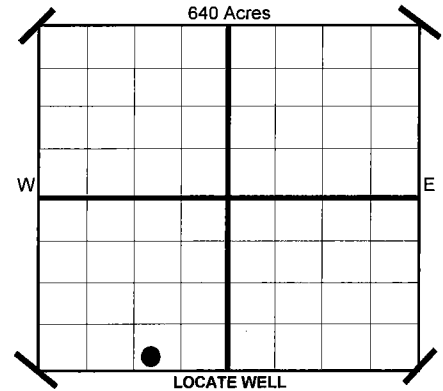
OKLAHOMA CORPORATION COMMISSION

ORIGINAL  
 AMENDED  
 Reason Amended

COMPLETION REPORT

TYPE OF DRILLING OPERATION  
 STRAIGHT HOLE  DIRECTIONAL HOLE  HORIZONTAL HOLE  
 If directional or horizontal, see reverse for bottom hole location.

SPUD DATE 9/13/2016  
 DRLG FINISHED DATE 9/25/2016  
 DATE OF WELL COMPLETION 10/19/2016  
 1ST PROD DATE 11/5/2016  
 RECOMP DATE  
 LONGITUDE (if Known)  
 OTC/OCC OPERATOR NO. 17441



COUNTY KINGFISHER SEC 2 TWP 18N RGE 6W  
 LEASE NAME HILL 2-18-6 WELL NO 1H  
 SHL SW 1/4 SW 1/4 SE 1/4 SW 1/4 FSL 255 FWL OF 1/4 SEC 1,565  
 ELEVATION Derrick Fl 1,195 Ground 1,164 Latitude (if Known)  
 OPERATOR NAME CHESAPEAKE OPERATING, L.L.C. OTC/OCC OPERATOR NO. 17441  
 ADDRESS P.O. BOX 18496  
 CITY OKLAHOMA CITY STATE OK ZIP 73154

COMPLETION TYPE

SINGLE ZONE  
 MULTIPLE ZONE  
 COMMINGLED  
 LOCATION EXCEPTION ORDER NO. 657972 (F.O.)  
 INCREASED DENSITY ORDER NO. N/A

CASING & CEMENT (Form 1002C must be attached)

TYPE	SIZE	WEIGHT	GRADE	FEET	PSI	SAX	TOP	
CONDUCTOR								
SURFACE	9 5/8"	36#	J-55	1,478		610	SURFACE	
INTERMEDIATE								
PRODUCTION	7"	26#	P-110	6,748		261	4,318	
LINER	4 1/2"	13.5#	P-110EC	6566-11,359		426	6,566	
							TOTAL DEPTH	11,361

PACKER @ N/A BRAND & TYPE PLUG @ TYPE PLUG @ 11,272 TYPE CIBP  
 PACKER @ BRAND & TYPE PLUG @ TYPE PLUG @ TYPE

COMPLETION & TEST DATA BY PRODUCING FORMATION

FORMATION	OSWEGO					
SPACING & SPACING ORDER NUMBER	640 646163					
CLASS: Oil, Gas, Dry, Inj. Disp, Comm Disp, Svc	OIL					
PERFORATED INTERVALS	6,691-11,263					
ACID/VOLUME	HCL Acid 857.325 GALS					
FRACTURE TREATMENT (Fluids/Prop Amounts)	Frac Fluid 45,355 BBLs No Proppant used					

*Reported to Frac Focus*

Minimum Gas Allowable (165-10-17-7) Gas Purchaser/Measurer Chesapeake Operating, L.L.C.  
 OR  
 Oil Allowable (165-10-13-3) 1st Sales Date 11/5/2016

INITIAL TEST DATA

INITIAL TEST DATE	11/6/2016			
OIL-BBL/DAY	474			
OIL-GRAVITY ( API)				
GAS-MCF/DAY	533			
GAS-OIL RATIO CU FT/BBL	1,124			
WATER-BBL/DAY	1446			
PUMPING OR FLOWING	ARTIFICIAL LIFT			
INITIAL SHUT-IN PRESSURE				
CHOKE SIZE				
FLOW TUBING PRESSURE	518			

**AS SUBMITTED**

A record of the formations drilled through, and pertinent remarks are presented on the reverse. I declare that I have knowledge of the contents of this report and am authorized by my organization to make this report, which was prepared by me or under my supervision and direction, with the data and facts stated herein to be true, correct, and complete to the best of my knowledge and belief.

*JP Powell* SIGNATURE NAME (PRINT OR TYPE) JP Powell, Sr. Regulatory Analyst  
 P.O. BOX 18496 ADDRESS CITY OKLAHOMA CITY STATE OK ZIP 73154  
 12/8/2016 DATE PHONE NUMBER 405-848-8000  
 jp.powell@chk.com EMAIL ADDRESS

PLEASE TYPE OR USE BLACK INK ONLY  
FORMATION RECORD

Give formation names and tops, if available, or descriptions and thickness of formations drilled through. Show intervals cored or drillstem tested.

LEASE NAME HILL 2-18-6

WELL NO. 1H

NAMES OF FORMATIONS	TOP
OSWEGO	6,622

FOR COMMISSION USE ONLY	
ITD on file	<input type="checkbox"/> YES <input type="checkbox"/> NO
APPROVED	DISAPPROVED
2) Reject Codes	

Were open hole logs run?	yes <input type="checkbox"/> no <input checked="" type="checkbox"/>
Date Last log was run	N/A
Was CO <sub>2</sub> encountered?	yes <input type="checkbox"/> no <input checked="" type="checkbox"/> at what depths?
Was H <sub>2</sub> S encountered?	yes <input type="checkbox"/> no <input checked="" type="checkbox"/> at what depths?
Were unusual drilling circumstances encountered?	yes <input type="checkbox"/> no <input checked="" type="checkbox"/>
If yes, briefly explain.	

Other remarks:

---



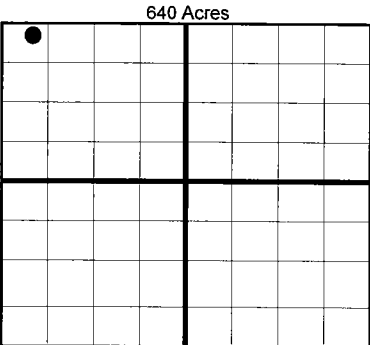
---



---



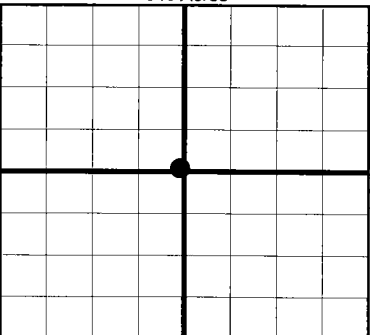
---



If more than three drainholes are proposed, attach a separate sheet indicating the necessary information.

Direction must be stated in degrees azimuth. Please note, the horizontal drainhole and its end point must be located within the boundaries of the lease or spacing unit.

**Directional surveys are required for all drainholes and directional wells.**  
640 Acres



**BOTTOM HOLE LOCATION FOR DIRECTIONAL HOLE**

SEC	TWP	RGE	COUNTY							
Spot Location				1/4	1/4	1/4	1/4	Feet From 1/4 Sec Lines	FSL	FWL
Measured Total Depth				True Vertical Depth		BHL From Lease, Unit, or Property Line:				

**BOTTOM HOLE LOCATION FOR HORIZONTAL HOLE: (LATERALS)**

SEC	TWP	RGE	COUNTY	KINGFISHER									
2	18N	6W		Spot Location				Feet From 1/4 Sec Lines	FNL	241	FWL	439	
				NE 1/4	NW 1/4	NW 1/4	NW 1/4	Direction	Total Length				
Depth of Deviation				5,990		Radius of Turn		345		1		4,739	
Measured Total Depth				11,361		True Vertical Depth		6,335		BHL From Lease, Unit, or Property Line:			
										241			

**LATERAL #2**

SEC	TWP	RGE	COUNTY								
Spot Location				1/4	1/4	1/4	1/4	Feet From 1/4 Sec Lines	FSL	FWL	
Depth of Deviation				Radius of Turn		Direction		Total Length			
Measured Total Depth				True Vertical Depth		BHL From Lease, Unit, or Property Line:					

**LATERAL #3**

SEC	TWP	RGE	COUNTY								
Spot Location				1/4	1/4	1/4	1/4	Feet From 1/4 Sec Lines	FSL	FWL	
Depth of Deviation				Radius of Turn		Direction		Total Length			
Measured Total Depth				True Vertical Depth		BHL From Lease, Unit, or Property Line:					

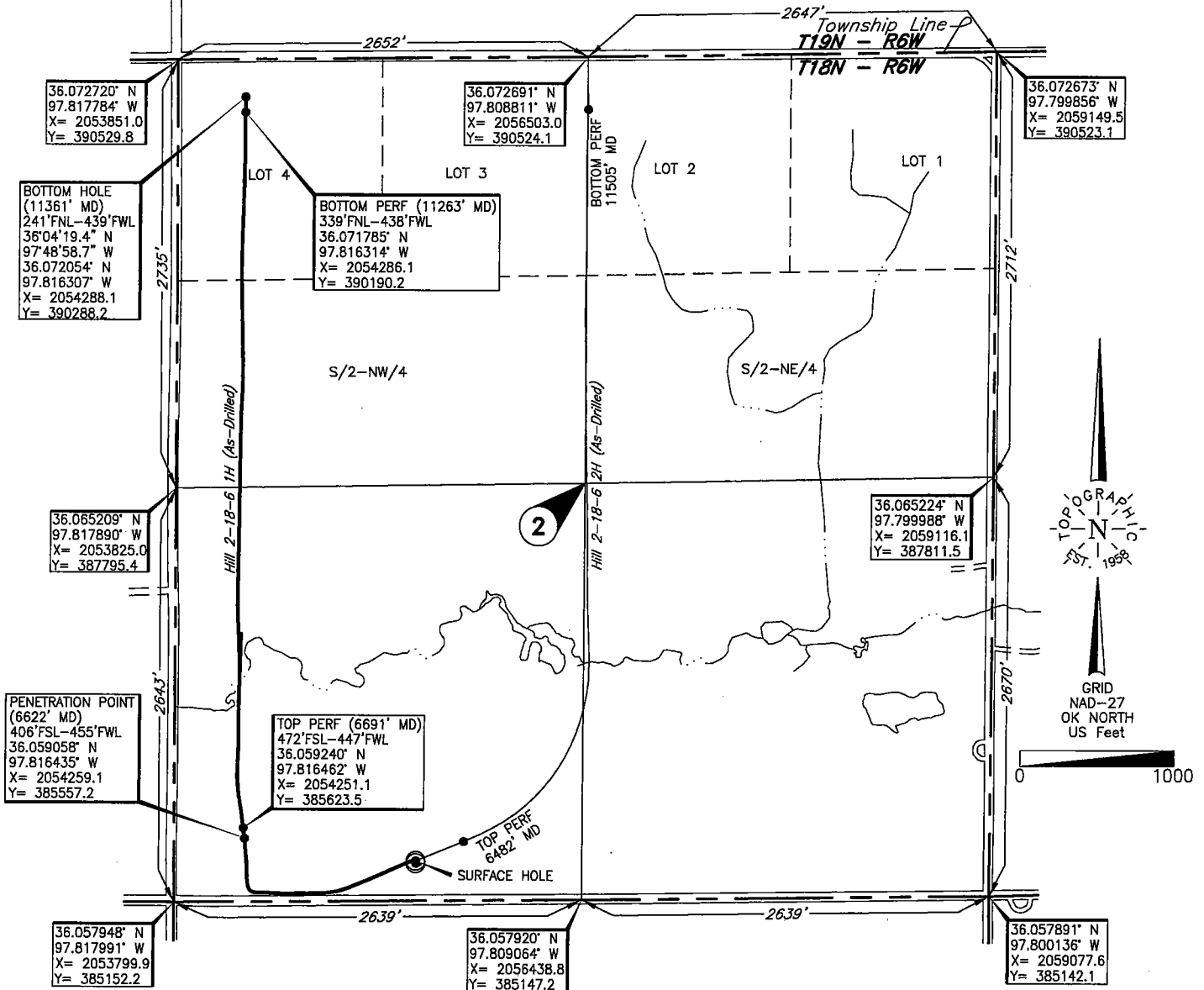
**TOPOGRAPHIC LAND SURVEYS OF OKLAHOMA**

6709 NORTH CLASSEN BLVD., OKLA. CITY, OKLA. 73116 \* LOCAL (405) 843-4847 \* OUT OF STATE (800) 654-3219  
 Certificate of Authorization No. 1293 LS

KINGFISHER

County, Oklahoma

255'FSL-1565FWL Section 2 Township 18N Range 6W I.M.



Operator: CHESAPEAKE OPERATING, L.L.C.

Lease Name: HILL 2-18-6

Well No.: 1H

**ELEVATION:**

1164' Gr. at Level Pad

Topography & Vegetation Loc. fell on level pad, ±224' N of E-W fence and powerline.

Good Drill Site? Yes Reference Stakes or Alternate Location  
 Stakes Set None

Best Accessibility to Location From South off county road

Distance & Direction  
 from Hwy Jct or Town From junction of US Hwy. 81 N-S and St. Hwy. 51 E-W in Hennessey, OK,  
go East on St. Hwy. 51 for ±4.5 miles, then South ±4 miles to the SW Cor. of Sec. 2-T18N-R6W.

DATUM: NAD-27  
 LAT: 36°03'31.1" N  
 LONG: 97°48'45.7" W  
 LAT: 36.058634° N  
 LONG: 97.812685° W  
 STATE PLANE  
 COORDINATES: (US Feet)  
 ZONE: OK NORTH  
 X: 2055367.4  
 Y: 385404.2

267182 Date of Drawing: Oct. 27, 2016  
 Invoice # 262537 Date Staked: Jul. 7, 2016 JP

**FINAL AS-DRILLED PLAT**

AS-DRILLED INFORMATION  
 FURNISHED BY CHESAPEAKE OPERATING, L.L.C.

This information was gathered with a GPS receiver with ±1 foot Horiz./Vert. accuracy.