

Oklahoma Corporation Commission
 Oil & Gas Conservation Division
 Post Office Box 52000
 Oklahoma City, Oklahoma 73152-2000
 Rule 165: 10-3-25

Form 1002A

API No.: 35071248530002

Completion Report

Spud Date: November 02, 2015

OTC Prod. Unit No.: 071-217213

Drilling Finished Date: November 09, 2015

Amended

1st Prod Date: February 12, 2016

Amend Reason: RECOMPLETE

Completion Date: January 22, 2016

Recomplete Date: September 07, 2016

Drill Type: STRAIGHT HOLE

Well Name: STORMY 2

Purchaser/Measurer:

Location: KAY 33 25N 1W
 S2 NE SE NE
 800 FSL 2310 FWL of 1/4 SEC
 Derrick Elevation: 985 Ground Elevation: 972

First Sales Date:

Operator: DONRAY PETROLEUM LLC 21690

2525 NW EXPRESSWAY STE 640
 OKLAHOMA CITY, OK 73112-7230

Completion Type	
X	Single Zone
	Multiple Zone
	Commingled

Location Exception	
Order No	
There are no Location Exception records to display.	

Increased Density	
Order No	
There are no Increased Density records to display.	

Casing and Cement							
Type	Size	Weight	Grade	Feet	PSI	SAX	Top of CMT
SURFACE	8 5/8	26		300		185	SURFACE
PRODUCTION	5.5	17		4800		350	1670

Liner								
Type	Size	Weight	Grade	Length	PSI	SAX	Top Depth	Bottom Depth
There are no Liner records to display.								

Total Depth: 4850

Packer	
Depth	Brand & Type
There are no Packer records to display.	

Plug	
Depth	Plug Type
4250	CIBP
4800	CIBP

Initial Test Data

Test Date	Formation	Oil BBL/Day	Oil-Gravity (API)	Gas MCF/Day	Gas-Oil Ratio Cu FT/BBL	Water BBL/Day	Pumpin or Flowing	Initial Shut-In Pressure	Choke Size	Flow Tubing Pressure
Sep 07, 2016	COTTAGE GROVE			20		960	SWAB	110		

Completion and Test Data by Producing Formation

Formation Name: COTTAGE GROVE

Code: 405CGGV

Class: GAS

Spacing Orders

Order No	Unit Size
647452	40

Perforated Intervals

From	To
3192	3220

Acid Volumes

750 GALLONS 10%

Fracture Treatments

500 BSW, 20,000 POUNDS SAND

Formation	Top
COTTAGE GROVE	3150

Were open hole logs run? Yes

Date last log run: November 09, 2015

Were unusual drilling circumstances encountered? No

Explanation:

Other Remarks

SENDING IN THIS 1002A LATE BECAUSE WE MISSED SENDING IN EARLIER.

FOR COMMISSION USE ONLY

Status: Accepted

1135284

API NO. 07124853
 OTC PROD. UNIT NO. 071217213

PLEASE TYPE OR USE BLACK INK ONLY
 NOTE:

Attach copy of original 1002A if recompletion or reentry.

OKLAHOMA CORPORATION COMMISSION
 Oil & Gas Conservation Division
 Post Office Box 52000
 Oklahoma City, Oklahoma 73152-2000
 Rule 165:10-3-25

RECEIVED

Form 1002A
 Rev. 2009

DEC 01 2016

OKLAHOMA CORPORATION COMMISSION

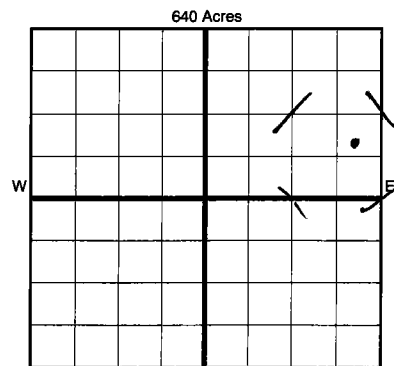
ORIGINAL
 AMENDED (Reason) recomplete

COMPLETION REPORT

TYPE OF DRILLING OPERATION
 STRAIGHT HOLE DIRECTIONAL HOLE HORIZONTAL HOLE
 SERVICE WELL

COUNTY kay SEC 33 TWP 25n RGE 1w
 LEASE NAME stormy WELL NO. 2
 s2 1/4 ne 1/4 se 1/4 ne 1/4 FSL OF 1/4 SEC 800 FWL OF 1/4 SEC 2310
 ELEVATIO N Derrick 985 Ground 972 Latitude (if known)
 OPERATOR NAME donray petroleum llc. OTC/OCC OPERATOR NO. 21690
 ADDRESS 2525 nw expressway #640
 CITY okc STATE okla ZIP 73112

SPUD DATE 11/2/15
 DRLG FINISHED DATE 11/9/15
 DATE OF WELL COMPLETION 1/22/16
 1st PROD DATE 2/12/16
 RECOMP DATE 9/7/16
 Longitude (if known)
 OPERATOR NO. 21690



LOCATE WELL

COMPLETION TYPE
 SINGLE ZONE
 MULTIPLE ZONE
 COMMINGLED
 LOCATION EXCEPTION ORDER
 INCREASED DENSITY ORDER NO.

CASING & CEMENT (Form 1002C must be attached)

TYPE	SIZE	WEIGHT	GRADE	FEET	PSI	SAX	TOP OF CMT
CONDUCTOR							
SURFACE	8 5/8	26		300		185	surface
INTERMEDIATE							
PRODUCTION	5.5	17		4800		350	1670
LINER							
TOTAL DEPTH							4,850

PACKER @ _____ BRAND & TYPE _____ PLUG @ 4800 TYPE cibp PLUG @ _____ TYPE _____
 PACKER @ _____ BRAND & TYPE _____ PLUG @ 4250 TYPE cibp PLUG @ _____ TYPE _____

COMPLETION & TEST DATA BY PRODUCING FORMATION 405 CGBV

FORMATION	<u>cottage grove</u>							<i>Monitor Report to Frac Focus for recomplete</i>
SPACING & SPACING ORDER NUMBER	<u>647452 (40)</u>							
CLASS: Oil, Gas, Dry, Inj, Disp, Comm Disp, Svc	<u>oil Gas</u>	<u>per initial test</u>						
PERFORATED INTERVALS	<u>3192/3220</u>							
ACID/VOLUME	<u>750 gals 10 %</u>							
FRACTURE TREATMENT (Fluids/Prop Amounts)	<u>500bsw</u> <u>20 k # snd</u>							

Min Gas Allowable (165:10-17-7) OR Gas Purchaser/Measurer First Sales Date
 Oil Allowable (165:10-13-3)

INITIAL TEST DATA

INITIAL TEST DATE	<u>9/7/2016</u>				
OIL-BBL/DAY	<u>trace</u>				
OIL-GRAVITY (API)					
GAS-MCF/DAY	<u>20mcfpd</u>				
GAS-OIL RATIO CU FT/BBL					
WATER-BBL/DAY	<u>960</u>				
PUMPING OR FLOWING	<u>swab</u>				
INITIAL SHUT-IN PRESSURE	<u>110#</u>				
CHOKE SIZE					
FLOW TUBING PRESSURE					

AS SUBMITTED

A record of the formations drilled through, and pertinent remarks are presented on the reverse. I declare that I have knowledge of the contents of this report and am authorized by my organization to make this report, which was prepared by me or under my supervision and direction, with the data and facts stated herein to be true, correct, and complete to the best of my knowledge and belief.

SIGNATURE: ray corbitt jr NAME (PRINT OR TYPE)
 ADDRESS: 2525 nw expressway #640 CITY: okc STATE: ok ZIP: 73112
 DATE: 11/30/2016 PHONE NUMBER: (405) 418-4348
 EMAIL ADDRESS: ray@donraypetroleum.com

PLEASE TYPE OR USE BLACK INK ONLY
FORMATION RECORD

Give formation names and tops, if available, or descriptions and thickness of formations drilled through. Show intervals cored or drillstem tested.

LEASE NAME stormy WELL NO. #2

NAMES OF FORMATIONS	TOP
cottage grove	3,150

FOR COMMISSION USE ONLY

ITD on file YES NO

APPROVED _____ DISAPPROVED _____

2) Reject Codes

Were open hole logs run? yes no

Date Last log was run 11/9/2015

Was CO₂ encountered? yes no at what depths? _____

Was H₂S encountered? yes no at what depths? _____

Were unusual drilling circumstances encountered? yes no

If yes, briefly explain below

Other remarks: att. Sending in this 1002a in late because we missed sending in earlier.

640 Acres

If more than three drainholes are proposed, attach a separate sheet indicating the necessary information.

Direction must be stated in degrees azimuth. Please note, the horizontal drainhole and its end point must be located within the boundaries of the lease or spacing unit.

Directional surveys are required for all drainholes and directional wells.

640 Acres

BOTTOM HOLE LOCATION FOR DIRECTIONAL HOLE

SEC	TWP	RGE	COUNTY
Spot Location			
1/4	1/4	1/4	1/4
Measured Total Depth		True Vertical Depth	BHL From Lease, Unit, or Property Line:

BOTTOM HOLE LOCATION FOR HORIZONTAL HOLE: (LATERALS)

LATERAL #1

SEC	TWP	RGE	COUNTY
Spot Location			
1/4	1/4	1/4	1/4
Depth of Deviation		Radius of Turn	Direction
			Total Length
Measured Total Depth		True Vertical Depth	BHL From Lease, Unit, or Property Line:

LATERAL #2

SEC	TWP	RGE	COUNTY
Spot Location			
1/4	1/4	1/4	1/4
Depth of Deviation		Radius of Turn	Direction
			Total Length
Measured Total Depth		True Vertical Depth	BHL From Lease, Unit, or Property Line:

LATERAL #3

SEC	TWP	RGE	COUNTY
Spot Location			
1/4	1/4	1/4	1/4
Depth of Deviation		Radius of Turn	Direction
			Total Length
Measured Total Depth		True Vertical Depth	BHL From Lease, Unit, or Property Line:

2/12/16

-02

RECEIVED

Form 1002A Rev. 2009

MAR 08 2016

1016EZ

API NO. 07124853
 OTC PROD. ~~217213~~
 UNIT NO. 071-217213
 ORIGINAL
 AMENDED (Reason)

PLEASE TYPE OR USE BLACK INK ONLY NOTE:

Attach copy of original 1002A if recompletion or reentry.

OKLAHOMA CORPORATION COMMISSION
 Oil & Gas Conservation Division
 Post Office Box 52000
 Oklahoma City, Oklahoma 73152-2000
 Rule 165:10-3-25

COMPLETION REPORT

OKLAHOMA CORPORATION COMMISSION
640 Acres

TYPE OF DRILLING OPERATION
 STRAIGHT HOLE DIRECTIONAL HOLE HORIZONTAL HOLE
 SERVICE WELL

SPUD DATE 11/2/15
 DRLG FINISHED DATE 11/9/15

If directional or horizontal, see reverse for bottom hole location.

COUNTY kay SEC 33 TWP 25n RGE 1w

DATE OF WELL COMPLETION 1/22/16

LEASE NAME stormy WELL NO. 2

1st PROD DATE wtg.on elec

s2 1/4 ne 1/4 se 1/4 ne 1/4 FSL OF 1/4 SEC 800 FWL OF 1/4 SEC 2310

RECOMP DATE

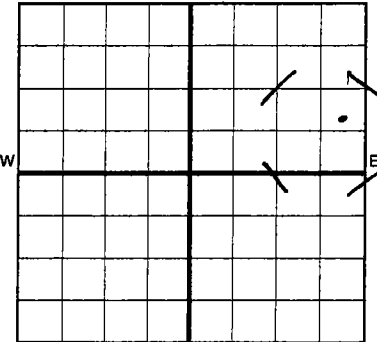
ELEVATIO N Derrick Ground Latitude (if known)

Longitude (if known)

OPERATOR NAME donray petroleum llc. OTC/OCC OPERATOR NO. 21690

ADDRESS 2525 nw expressway # 640

CITY okc STATE okla ZIP 73112



COMPLETION TYPE
 SINGLE ZONE
 MULTIPLE ZONE
 COMMINGLED
 LOCATION
 EXCEPTION ORDER
 INCREASED DENSITY
 ORDER NO.

CASING & CEMENT (Form 1002C must be attached)

TYPE	SIZE	WEIGHT	GRADE	FEET	PSI	SAX	TOP OF CMT	
CONDUCTOR								
SURFACE	8.5/8	26		300		185	surf	
INTERMEDIATE								
PRODUCTION	5.5	17		4800		350	1670	
LINER								
							TOTAL DEPTH	4,850

PACKER @ _____ BRAND & TYPE _____ PLUG @ 4800 TYPE sibp PLUG @ _____ TYPE _____
 PACKER @ _____ BRAND & TYPE _____ PLUG @ _____ TYPE _____ PLUG @ _____ TYPE _____

COMPLETION & TEST DATA BY PRODUCING FORMATION (202 SMPSG)

FORMATION	simpson group						
SPACING & SPACING ORDER NUMBER	647452 (40)						
CLASS: Oil, Gas, Dry, Inj, Disp, Comm Disp, Svc	oil Gas	per initial test					Monitor Report to Focuss
PERFORATED INTERVALS	4322-4378						
ACID/VOLUME	500 gal 10 % hci						
FRACTURE TREATMENT (Fluids/Prop Amounts)	1000 bsw 20k# 20/40snd 10k# 12/20snd						

AS SUBMITTED

Min Gas Allowable (165:10-17-7) OR Oil Allowable (165:10-13-3) Gas Purchaser/Measurer First Sales Date 02/12/2016?

INITIAL TEST DATA

INITIAL TEST DATE	1/22/2016				
OIL-BBL/DAY	trace				
OIL-GRAVITY (API)	40				
GAS-MCF/DAY	100mcf				
GAS-OIL RATIO CU FT/BBL					
WATER-BBL/DAY	800				
PUMPING OR FLOWING	swab				
INITIAL SHUT-IN PRESSURE	350#				
CHOKE SIZE					
FLOW TUBING PRESSURE					

A record of the formations drilled through, and pertinent remarks are presented on the reverse. I declare that I have knowledge of the contents of this report and am authorized by my organization to make this report, which was prepared by me or under my supervision and direction, with the data and facts stated herein to be true, correct, and complete to the best of my knowledge and belief.

SIGNATURE: ray corbitt jr
 ADDRESS: 2525 nw expressway #640
 CITY: okc STATE: ok ZIP: 73112

DATE: 2/18/2016
 PHONE NUMBER: (405) 418-4348
 EMAIL ADDRESS: ray@donraypetroleum.com

EZ

ER

11/17

RECEIVED

Form 1002A Rev. 2009

DEC 01 2016

OKLAHOMA CORPORATION COMMISSION

1016EZ

API NO. 07 24853
OTC PROD. UNIT NO. 071217213

PLEASE TYPE OR USE BLACK INK ONLY
NOTE:

Attach copy of original 1002A if recompletion or reentry.

OKLAHOMA CORPORATION COMMISSION
Oil & Gas Conservation Division
Post Office Box 52000
Oklahoma City, Oklahoma 73152-2000
Rule 165:10-3-25

COMPLETION REPORT

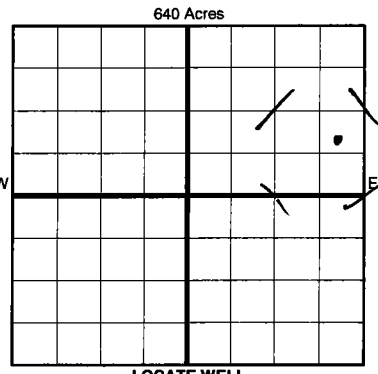
ORIGINAL
 AMENDED (Reason) recomplete

TYPE OF DRILLING OPERATION
 STRAIGHT HOLE DIRECTIONAL HOLE HORIZONTAL HOLE
 SERVICE WELL

If directional or horizontal, see reverse for bottom hole location.

COUNTY kay SEC 33 TWP 25n RGE 1w
LEASE NAME stormy WELL NO. 2
s2 1/4 ne 1/4 se 1/4 ne 1/4 FSL OF 1/4 SEC 800 FWL OF 1/4 SEC 2310
ELEVATIO N Derrick 985 Ground 972 Latitude (if known)
OPERATOR NAME donray petroleum llc. OTC/OCC OPERATOR NO. 21690
ADDRESS 2525 nw expressway #640
CITY okc STATE okla ZIP 73112

SPUD DATE 11/2/15
DRLG FINISHED DATE 11/9/15
DATE OF WELL COMPLETION 1/22/16
1st PROD DATE 2/12/16
RECOMP DATE 9/7/16
Longitude (if known)
OTC/OCC OPERATOR NO. 21690



COMPLETION TYPE
 SINGLE ZONE
 MULTIPLE ZONE
Application Date
 COMMINGLED
Application Date
LOCATION
EXCEPTION ORDER
INCREASED DENSITY
ORDER NO.

CASING & CEMENT (Form 1002C must be attached)

TYPE	SIZE	WEIGHT	GRADE	FEET	PSI	SAX	TOP OF CMT
CONDUCTOR							
SURFACE	8 5/8	26		300		185	surface
INTERMEDIATE							
PRODUCTION	5.5	17		4800		350	1670
LINER							
TOTAL DEPTH'							4,850

PACKER @ _____ BRAND & TYPE _____ PLUG @ 4800 TYPE cibp PLUG @ _____ TYPE _____
PACKER @ _____ BRAND & TYPE _____ PLUG @ 4250 TYPE cibp PLUG @ _____ TYPE _____

COMPLETION & TEST DATA BY PRODUCING FORMATION 405 CGGV

FORMATION	cottage grove							Monitor Report to Frac Focus for recomplete
SPACING & SPACING ORDER NUMBER	647452 (40)							
CLASS: Oil, Gas, Dry, Inj, Disp, Comm Disp, Svc	oil Gas	per initial test						
PERFORATED INTERVALS	3192/3220							
ACID/VOLUME	750 gals 10 %							
FRACTURE TREATMENT (Fluids/Prop Amounts)	500bsw 20 k # snd							

Min Gas Allowable (165:10-17-7) OR Gas Purchaser/Measurer First Sales Date
 Oil Allowable (165:10-13-3)

INITIAL TEST DATA

INITIAL TEST DATE	9/7/2016							
OIL-BBL/DAY	trace							
OIL-GRAVITY (API)								
GAS-MCF/DAY	20mcfpd							
GAS-OIL RATIO CU FT/BBL								
WATER-BBL/DAY	960							
PUMPING OR FLOWING	swab							
INITIAL SHUT-IN PRESSURE	110#							
CHOKE SIZE								
FLOW TUBING PRESSURE								

AS SUBMITTED

9/7/16
SCANNED

A record of the formations drilled through, and pertinent remarks are presented on the reverse. I declare that I have knowledge of the contents of this report and am authorized by my organization to make this report, which was prepared by me or under my supervision and direction, with the data and facts stated herein to be true, correct, and complete to the best of my knowledge and belief.

ray corbitt jr 11/30/2016 (405) 418-4348
SIGNATURE NAME (PRINT OR TYPE) DATE PHONE NUMBER
2525 nw expressway #640 okc ok 73112 ray@donraypetroleum.com
ADDRESS CITY STATE ZIP EMAIL ADDRESS

EZ

AS