

Oklahoma Corporation Commission
 Oil & Gas Conservation Division
 Post Office Box 52000
 Oklahoma City, Oklahoma 73152-2000
 Rule 165: 10-3-25

Form 1002A

API No.: 35073252800001

Completion Report

Spud Date: May 23, 2016

OTC Prod. Unit No.: 073-217840

Drilling Finished Date: July 13, 2016

1st Prod Date: August 18, 2016

Completion Date: August 17, 2016

Drill Type: HORIZONTAL HOLE

Min Gas Allowable: Yes

Well Name: CLEAR CREEK 1H-4X

Purchaser/Measurer: NEWFIELD

Location: KINGFISHER 4 15N 6W
 NE4 NW4 NW4 NW4
 265 FNL 370 FWL of 1/4 SEC
 Latitude: 35.81226 Longitude: -97.85033
 Derrick Elevation: 1192 Ground Elevation: 1164

First Sales Date: 08/18/2016

Operator: NEWFIELD EXPLORATION MID-CON INC 20944

24 WATERWAY AVE STE 900
 THE WOODLANDS, TX 77380-3197

Completion Type	
X	Single Zone
	Multiple Zone
	Commingled

Location Exception	
Order No	
	645007
	657490

Increased Density	
Order No	
There are no Increased Density records to display.	

Casing and Cement							
Type	Size	Weight	Grade	Feet	PSI	SAX	Top of CMT
SURFACE	9 5/8	40	J-55	1512	2000	420	SURFACE
PRODUCTION	5 1/2	20	P-110-ICY	17830	2500	2410	4893

Liner								
Type	Size	Weight	Grade	Length	PSI	SAX	Top Depth	Bottom Depth
There are no Liner records to display.								

Total Depth: 17833

Packer	
Depth	Brand & Type
There are no Packer records to display.	

Plug	
Depth	Plug Type
There are no Plug records to display.	

Initial Test Data										
Test Date	Formation	Oil BBL/Day	Oil-Gravity (API)	Gas MCF/Day	Gas-Oil Ratio Cu FT/BBL	Water BBL/Day	Pumpin or Flowing	Initial Shut-In Pressure	Choke Size	Flow Tubing Pressure
Sep 14, 2016	MISSISSIPPIAN (EX CHESTER)	236	39.6	110	466	1310	FLOWING	1000	64	

Completion and Test Data by Producing Formation										
Formation Name: MISSISSIPPIAN (EX CHESTER)			Code: 359MSNLC			Class: OIL				
Spacing Orders				Perforated Intervals						
Order No		Unit Size		From			To			
644690		640		7500			17688			
645006		MULTIUNIT								
Acid Volumes				Fracture Treatments						
There are no Acid Volume records to display.				There are no Fracture Treatments records to display.						

Formation	Top
-----------	-----

Were open hole logs run? No

Date last log run:

Were unusual drilling circumstances encountered? No

Explanation:

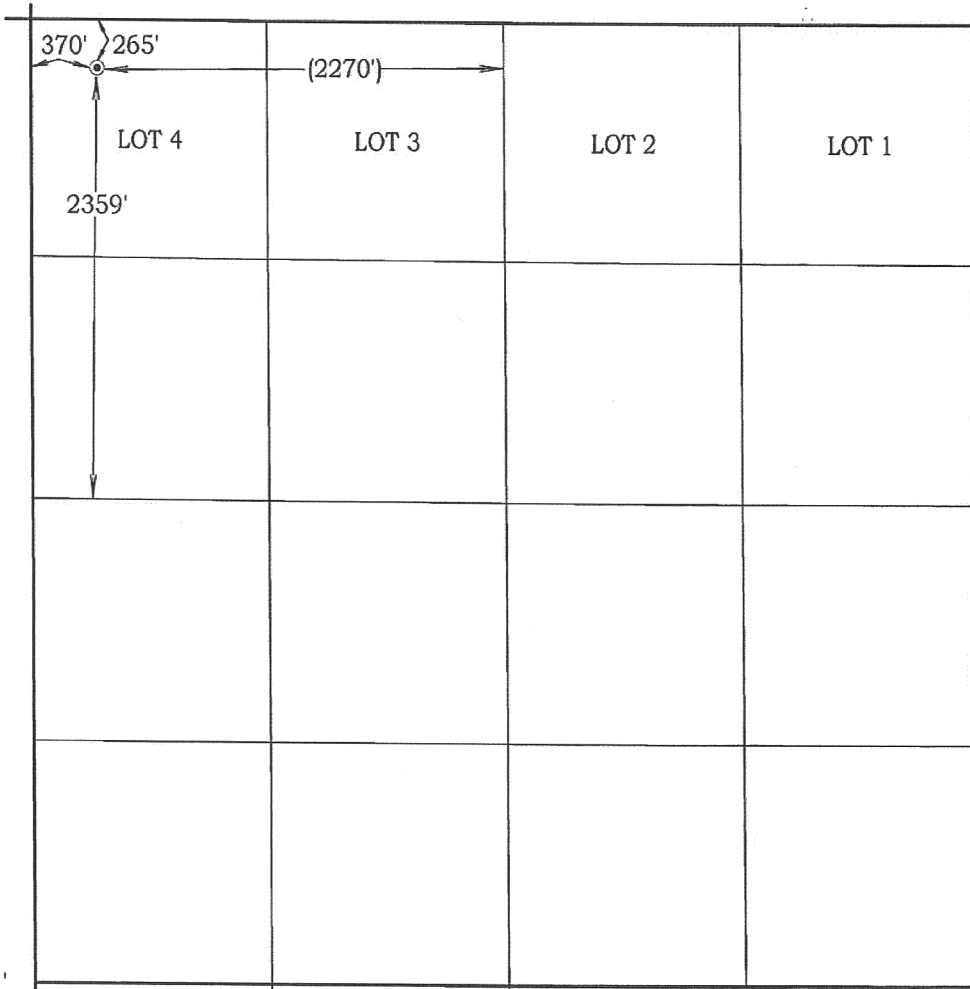
Other Remarks
IRREGULAR SECTION.

Lateral Holes
Sec: 9 TWP: 15N RGE: 6W County: KINGFISHER
SE SW SW SW
51 FSL 409 FWL of 1/4 SEC
Depth of Deviation: 2198 Radius of Turn: 5872 Direction: 360 Total Length: 10188
Measured Total Depth: 17833 True Vertical Depth: 7665 End Pt. Location From Release, Unit or Property Line: 51

FOR COMMISSION USE ONLY	
Status: Accepted	1134605

Well Location Plat
M & M Land Surveying, Inc.
 520 "E" Street NW. Ardmore, OK 73401
 Office 580-226-0446 Mobile 580-221-4999

Company Name: Newfield Exploration Mid-Continent, Inc. Lease Name: Clear Creek #1H-4X
 Section 4 Township 15 North Range 6 West County Kingfisher Oklahoma
 Surface Location 265' FNL - 370' FWL Elevation 1164' Good Location? Yes
 Topography Location fell in wheat, ±257' North of pipeline.



Scale: 1" = 1000'
 Invoice #16174
 Date 4/27/16

Coordinates were derived from GPS RTK methods and are only accurate within ±10 feet

Location GPS NAD 27
 Oklahoma North
 Surface Location
 Latitude: 35.81226°
 Longitude: 97.85033°
 Y= 295,703'
 X = 2,044,377'

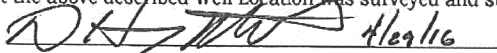
Location NAD 83
 Surface Location
 Latitude: 35.81230°
 Longitude: 97.85066°
 Y= 295,727'
 X = 2,012,779'

Best Accessibility to Location
From the North

Distance & Direction From From the Jct. of U.S. #81 and S.H. #33, go 3.5 miles East on S.H. #33, then 3 miles South and 1 mile West on county roads to the Northwest corner of Section 4.
 Highway or Town _____

CERTIFICATE:

I, D. Harry McClintick, a Registered Land Surveyor in the state of Oklahoma, do hereby certify that the above described Well Location was surveyed and staked on the ground as shown.


 D. Harry McClintick, R.P.L.S. # 1367, CA # 3093

This location has been staked according to the best official survey records available to us, but its accuracy is not guaranteed. Please review this plat and notify us immediately of any discrepancy.

The distances shown in parenthesis () are calculated distances based on the quarter section being 2640' and have not been measured.

