

Oklahoma Corporation Commission
Oil & Gas Conservation Division
Post Office Box 52000
Oklahoma City, Oklahoma 73152-2000
Rule 165: 10-3-25

Form 1002A

API No.: 35063245930000

Completion Report

Spud Date: May 21, 2016

OTC Prod. Unit No.: 063-217869

Drilling Finished Date: May 28, 2016

1st Prod Date: July 08, 2016

Completion Date: June 07, 2016

Drill Type: HORIZONTAL HOLE

Min Gas Allowable: Yes

Well Name: FIELDS 19-1HX

Purchaser/Measurer: ENABLE

Location: HUGHES 30 9N 11E
SW NE NW NW
350 FNL 807 FWL of 1/4 SEC
Latitude: 35.2310114 Longitude: -96.1905564
Derrick Elevation: 0 Ground Elevation: 714

First Sales Date: 09/01/2016

Operator: CALYX ENERGY III LLC 23515

6120 S YALE AVE STE 1480
TULSA, OK 74136-4226

Completion Type	
X	Single Zone
	Multiple Zone
	Commingled

Location Exception
Order No
655661

Increased Density
Order No
There are no Increased Density records to display.

Casing and Cement							
Type	Size	Weight	Grade	Feet	PSI	SAX	Top of CMT
CONDUCTOR	20			52		50	SURFACE
SURFACE	13 3/8	54.5	J-55	519		410	SURFACE
INTERMEDIATE	9 5/8	40	J-55	3790		255	2224
PRODUCTION	5.5	17	P-110	12215		1895	1925

Liner								
Type	Size	Weight	Grade	Length	PSI	SAX	Top Depth	Bottom Depth
There are no Liner records to display.								

Total Depth: 12258

Packer	
Depth	Brand & Type
There are no Packer records to display.	

Plug	
Depth	Plug Type
There are no Plug records to display.	

Initial Test Data										
Test Date	Formation	Oil BBL/Day	Oil-Gravity (API)	Gas MCF/Day	Gas-Oil Ratio Cu FT/BBL	Water BBL/Day	Pumpin or Flowing	Initial Shut-In Pressure	Choke Size	Flow Tubing Pressure
Jun 27, 2016	MISSISSIPPIAN			1834		2949	FLOWING	726	64/128	321

Completion and Test Data by Producing Formation										
Formation Name: MISSISSIPPIAN			Code: 359MSSP			Class: GAS				
Spacing Orders				Perforated Intervals						
Order No	Unit Size			From			To			
651705	640			3835			12149			
651752	640									
655524	MULTIUNIT									
Acid Volumes				Fracture Treatments						
1,924 BARRELS 15% HCL				249,920 BARRELS FLUID, 6,550,820 POUNDS SAND						

Formation	Top
BOOCH	2133
UNION VALLEY	3024
MISSISSIPPIAN	3704

Were open hole logs run? No

Date last log run:

Were unusual drilling circumstances encountered? No

Explanation:

Other Remarks
There are no Other Remarks.

Lateral Holes
Sec: 18 TWP: 9N RGE: 11E County: HUGHES
SW NE SW NW
1858 FNL 840 FWL of 1/4 SEC
Depth of Deviation: 2852 Radius of Turn: 1424 Direction: 5 Total Length: 7982
Measured Total Depth: 12258 True Vertical Depth: 3396 End Pt. Location From Release, Unit or Property Line: 840

FOR COMMISSION USE ONLY
Status: Accepted
1135064

RECEIVED

NOV 14 2016

Form 1002A Rev. 2009

OKLAHOMA CORPORATION COMMISSION

API NO. 3506324593
OTC PROD. UNIT NO. 063-217869

PLEASE TYPE OR USE BLACK INK ONLY
NOTE:

Attach copy of original 1002A if recompletion or reentry.

OKLAHOMA CORPORATION COMMISSION
Oil & Gas Conservation Division
Post Office Box 52000
Oklahoma City, Oklahoma 73152-2000
Rule 165:10-3-25

ORIGINAL
 AMENDED (Reason)

COMPLETION REPORT

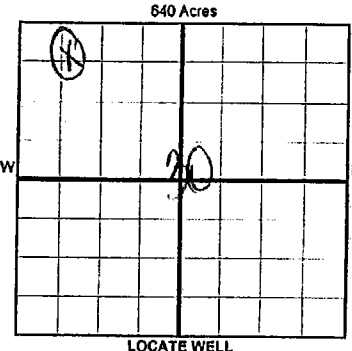
TYPE OF DRILLING OPERATION

STRAIGHT HOLE DIRECTIONAL HOLE HORIZONTAL HOLE
 SERVICE WELL

If directional or horizontal, see reverse for bottom hole location.

COUNTY Hughes SEC 30 TWP 9N RGE 11E
LEASE NAME FIELDS WELL NO. 19-1HX
SW 1/4 NE 1/4 NW 1/4 NW 1/4 (FNL OF 1/4 SEC 350 FWL OF 1/4 SEC 807)
ELEVATIO N Derrick Ground 714 Latitude (if known) 35.2310114 Longitude (if known) -96.1905564
OPERATOR NAME CALYX ENERGY III, LLC OTC/OCC OPERATOR NO. 23515
ADDRESS 6120 S. Yale, #1480
CITY Tulsa STATE OK ZIP 74136

SPUD DATE 5/21/16
DRLG FINISHED DATE 5/28/16
DATE OF WELL COMPLETION 6/7/16
1st PROD DATE 7/8/16
RECOMP DATE
OTC/OCC OPERATOR NO. 23515



COMPLETION TYPE

SINGLE ZONE
 MULTIPLE ZONE
 COMINGLED
LOCATION EXCEPTION ORDER INCREASED DENSITY ORDER NO. 655661 F.O., N/A

CASING & CEMENT (Form 1002C must be attached)

TYPE	SIZE	WEIGHT	GRADE	FEET	PSI	SAX	TOP OF CMT
CONDUCTOR	20"			52'		50	Surface
SURFACE	13-3/8"	54.5	J-55	519'		410	Surface
INTERMEDIATE	9-5/8"	40	J-55	3790'		255	2224'
PRODUCTION	5.5"	17	P-110	12215'		1895	1925
LINER							
TOTAL DEPTH							12,258'

PACKER @ _____ BRAND & TYPE _____ PLUG @ _____ TYPE _____ PLUG @ _____ TYPE _____
PACKER @ _____ BRAND & TYPE _____ PLUG @ _____ TYPE _____ PLUG @ _____ TYPE _____

COMPLETION & TEST DATA BY PRODUCING FORMATION 359 MSSP

FORMATION	SPACING & SPACING ORDER NUMBER	CLASS: Oil, Gas, Dry, Inj, Disp, Comm Disp, Svc	PERFORATED INTERVALS	ACID/VOLUME	FRACTURE TREATMENT (Fluids/Prop Amounts)
Mississippian	640/651752, 651705	GAS	3835' - 12149'	1924 Bbls 15% HCl	249,920 Bbls Fluid 6,550,820 # Sd

Monitor Report to Fractures

Min Gas Allowable (165:10-17-7) OR Oil Allowable (165:10-13-3) Gas Purchaser/Measurer Enable First Sales Date 9/1/2016

INITIAL TEST DATA

INITIAL TEST DATE	6/27/2016
OIL-BBL/DAY	0
OIL-GRAVITY (API)	
GAS-MCF/DAY	1834
GAS-OIL RATIO CU FT/BBL	
WATER-BBL/DAY	2949
PUMPING OR FLOWING	Flowing
INITIAL SHUT-IN PRESSURE	726
CHOKE SIZE	64/128
FLOW TUBING PRESSURE	321

AS SUBMITTED

A record of the formations drilled through, and pertinent remarks are presented on the reverse. I declare that I have knowledge of the contents of this report and am authorized by my organization to make this report, which was prepared by me or under my supervision and direction, with the data and facts stated herein to be true, correct, and complete to the best of my knowledge and belief.

Teresa Wade
SIGNATURE
161/16
DATE
918-949-4224
PHONE NUMBER
6120 S. Yale, #1480
ADDRESS
Tulsa OK 74136
CITY STATE ZIP
twade@calyxenergy.com
EMAIL ADDRESS

PLEASE TYPE OR USE BLACK INK ONLY
FORMATION RECORD

Give formation names and tops, if available, or descriptions and thickness of formations drilled through. Show intervals cored or drillstem tested.

LEASE NAME **FIELDS**

WELL NO. **19-1HX**

NAMES OF FORMATIONS	TOP
BOOCH	MD (GL) 2133'
UNION VALLEY	3024'
MISSISSIPPIAN	3704'

FOR COMMISSION USE ONLY

ITD on file YES NO

APPROVED DISAPPROVED

2) Reject Codes

Were open hole logs run? yes no

Date Last log was run _____

Was CO₂ encountered? yes no at what depths? _____

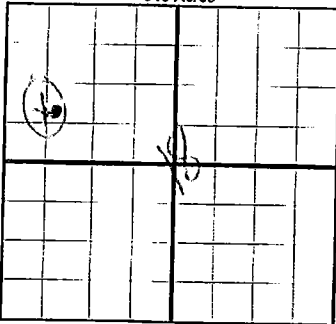
Was H₂S encountered? yes no at what depths? _____

Were unusual drilling circumstances encountered? yes no

If yes, briefly explain below _____

Other remarks:

640 Acres

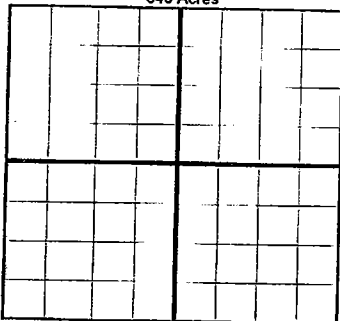


If more than three drainholes are proposed, attach a separate sheet indicating the necessary information.

Direction must be stated in degrees azimuth. Please note, the horizontal drainhole and its end point must be located within the boundaries of the lease or spacing unit.

Directional surveys are required for all drainholes and directional wells.

640 Acres



BOTTOM HOLE LOCATION FOR DIRECTIONAL HOLE

SEC	TWP	RGE	COUNTY
Spot Location			
1/4	1/4	1/4	1/4
Measured Total Depth		True Vertical Depth	
		BHL From Lease, Unit, or Property Line:	
		Feet From 1/4 Sec Lines	FSL
		FWL	

BOTTOM HOLE LOCATION FOR HORIZONTAL HOLE: (LATERALS)

LATERAL #1

SEC	TWP	RGE	COUNTY
18	9N	11E	HUGHES
Spot Location			
SW 1/4	NE 1/4	SW 1/4	NW 1/4
Depth of Deviation		Radius of Turn	
2,852		1424	
Measured Total Depth		True Vertical Depth	
12,258		3,396	
		BHL From Lease, Unit, or Property Line:	
		Feet From 1/4 Sec Lines	FSL
		1858	
		FWL	
		840	
		Direction	Total Length
		N5E 7,982	
		840'	

LATERAL #2

SEC	TWP	RGE	COUNTY
Spot Location			
1/4	1/4	1/4	1/4
Depth of Deviation		Radius of Turn	
Measured Total Depth		True Vertical Depth	
		BHL From Lease, Unit, or Property Line:	
		Feet From 1/4 Sec Lines	FSL
		FWL	
		Direction	Total Length

LATERAL #3

SEC	TWP	RGE	COUNTY
Spot Location			
1/4	1/4	1/4	1/4
Depth of Deviation		Radius of Turn	
Measured Total Depth		True Vertical Depth	
		BHL From Lease, Unit, or Property Line:	
		Feet From 1/4 Sec Lines	FSL
		FWL	
		Direction	Total Length

