

Oklahoma Corporation Commission
Oil & Gas Conservation Division
Post Office Box 52000
Oklahoma City, Oklahoma 73152-2000
Rule 165: 10-3-25

Form 1002A

API No.: 35129240750000

Completion Report

Spud Date: May 14, 2016

OTC Prod. Unit No.: 23429

Drilling Finished Date: July 04, 2016

1st Prod Date: July 27, 2016

Completion Date: July 20, 2016

Drill Type: HORIZONTAL HOLE

Well Name: MATTHEWS 1-4HC

Purchaser/Measurer: MARKWEST

Location: ROGER MILLS 4 11N 23W
SW SE SE SE
230 FSL 430 FEL of 1/4 SEC
Latitude: 35.4512417 Longitude: -99.6299333
Derrick Elevation: 2185 Ground Elevation: 2160

First Sales Date: 7/26/2016

Operator: FOURPOINT ENERGY LLC 23429

100 SAINT PAUL ST STE 400
DENVER, CO 80206-5140

Completion Type	
X	Single Zone
	Multiple Zone
	Commingled

Location Exception
Order No
649965

Increased Density
Order No
There are no Increased Density records to display.

Casing and Cement							
Type	Size	Weight	Grade	Feet	PSI	SAX	Top of CMT
SURFACE	13-3/8"	48	H-40	662	740	970	SURFACE
PRODUCTION	5-1/2"	20	P-110	18084	11100	2245	12711
INTERMEDIATE	9-5/8"	40	J-55	6541	2570	550	3997

Liner								
Type	Size	Weight	Grade	Length	PSI	SAX	Top Depth	Bottom Depth
There are no Liner records to display.								

Total Depth: 18114

Packer	
Depth	Brand & Type
There are no Packer records to display.	

Plug	
Depth	Plug Type
There are no Plug records to display.	

Initial Test Data										
Test Date	Formation	Oil BBL/Day	Oil-Gravity (API)	Gas MCF/Day	Gas-Oil Ratio Cu FT/BBL	Water BBL/Day	Pumpin or Flowing	Initial Shut-In Pressure	Choke Size	Flow Tubing Pressure
Aug 17, 2016	MARMATON	135	53.2	5634	41733	1828	FLOWING	1750	32/64"	1725

Completion and Test Data by Producing Formation										
Formation Name: MARMATON			Code: 404MRMN			Class: GAS				
Spacing Orders				Perforated Intervals						
Order No		Unit Size		From			To			
184759		640		13701			18036			
Acid Volumes				Fracture Treatments						
26693 GAL 15HCL				126726 BBLS SLICKWATER, 19451 BBLS LINEAR GEL, 528300 LBS 100 MESH, 2208020 LBS 40/70 WHITE SAND, 1169280 LBS 40/70 CRC-C						

Formation	Top
MARMATON	12851

Were open hole logs run? No

Date last log run:

Were unusual drilling circumstances encountered? No

Explanation:

Other Remarks
OCC: FLE ORDER HAS NOT BEEN ISSUED. WE HAVE ACCEPTED OPERATORS DATA AS SUBMITTED. IRREGULAR SECTION.

Lateral Holes
Sec: 4 TWP: 11N RGE: 23W County: ROGER MILLS
NE NW NE NE
271 FNL 708 FEL of 1/4 SEC
Depth of Deviation: 12720 Radius of Turn: 10 Direction: 358 Total Length: 18114
Measured Total Depth: 18114 True Vertical Depth: 13096 End Pt. Location From Release, Unit or Property Line: 271

FOR COMMISSION USE ONLY
Status: Accepted
1134545

TOPOGRAPHIC LAND SURVEYORS OF OKLAHOMA

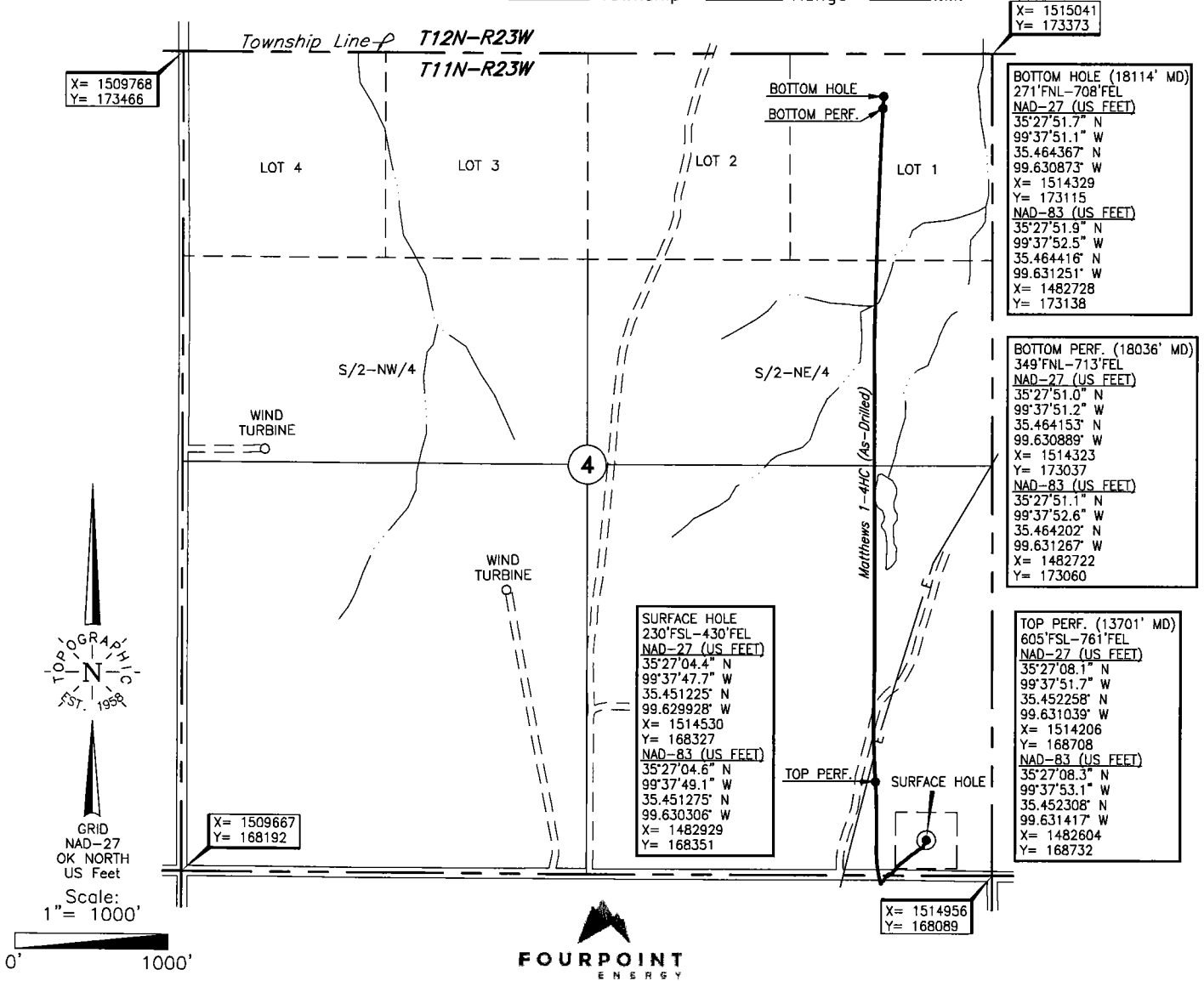
6709 NORTH CLASSEN BLVD., OKLA. CITY, OKLA. 73116 * LOCAL (405) 843-4847 * OUT OF STATE (800) 654-3219
 Certificate of Authorization No. 1293 LS

REVISION "A"
 10-08-2016

ROGER MILLS

County, Oklahoma

230'FSL - 430'FEL Section 4 Township 11N Range 23W I.M.



X= 1515041
 Y= 173373

X= 1509768
 Y= 173466

BOTTOM HOLE (18114' MD)
 271'FNL-708'FEL
 NAD-27 (US FEET)
 35°27'51.7" N
 99°37'51.1" W
 35.464367' N
 99.630873' W
 X= 1514329
 Y= 173115
 NAD-83 (US FEET)
 35°27'51.9" N
 99°37'52.5" W
 35.464416' N
 99.631251' W
 X= 1482728
 Y= 173138

BOTTOM PERF. (18036' MD)
 349'FNL-713'FEL
 NAD-27 (US FEET)
 35°27'51.0" N
 99°37'51.2" W
 35.464153' N
 99.630889' W
 X= 1514323
 Y= 173037
 NAD-83 (US FEET)
 35°27'51.1" N
 99°37'52.6" W
 35.464202' N
 99.631267' W
 X= 1482722
 Y= 173060

SURFACE HOLE
 230'FSL-430'FEL
 NAD-27 (US FEET)
 35°27'04.4" N
 99°37'47.7" W
 35.451225' N
 99.629928' W
 X= 1514530
 Y= 168327
 NAD-83 (US FEET)
 35°27'04.6" N
 99°37'49.1" W
 35.451275' N
 99.630306' W
 X= 1482929
 Y= 168351

TOP PERF. (13701' MD)
 605'FSL-761'FEL
 NAD-27 (US FEET)
 35°27'08.1" N
 99°37'51.7" W
 35.452258' N
 99.631039' W
 X= 1514206
 Y= 168708
 NAD-83 (US FEET)
 35°27'08.3" N
 99°37'53.1" W
 35.452308' N
 99.631417' W
 X= 1482604
 Y= 168732

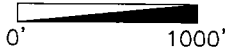
X= 1509667
 Y= 168192

X= 1514956
 Y= 168089



GRID
 NAD-27
 OK NORTH
 US Feet

Scale:
 1" = 1000'



Operator: FOURPOINT ENERGY, LLC.

Lease Name: MATTHEWS

Well No.: 1-4HC

ELEVATION:

2161' Gr. at Stake

Topography & Vegetation Loc. fell in pasture, ±196' North of E-W fence

Good Drill Site? Yes Reference Stakes or Alternate Location
 Stakes Set None

Best Accessibility to Location From South off county road

Distance & Direction
 from Hwy Jct or Town From Jct. US Hwy. 283 N-S and St. Hwy. 6 E-W, go ±3.0 mi. North
on US Hwy. 283, then ±1.5 mi. East on county road E 1080 to the SE Cor. of Sec. 4-T11N-R23W

This information was gathered with a GPS receiver with ±1 foot horiz./vert. accuracy.

DATUM: NAD-27
 LAT: 35°27'04.4"N
 LONG: 99°37'47.7"W
 LAT: 35.451225' N
 LONG: 99.629928' W
 STATE PLANE
 COORDINATES: (US Feet)
 ZONE: OK NORTH
 X: 1514530
 Y: 168327

266013 Date of Drawing: Sep. 27, 2016
 Invoice # 257821 Date Staked: Mar. 07, 2016 JP

FINAL AS-DRILLED PLAT

AS-DRILLED INFORMATION
 FURNISHED BY FOURPOINT ENERGY, LLC.

12/1/16

Oklahoma Corporation Commission
Oil & Gas Conservation Division
Post Office Box 52000
Oklahoma City, Oklahoma 73152-2000
Rule 165: 10-3-25

Form 1002A

1016EZ

API No.: 129240750000

Completion Report

Spud Date: May 14, 2016

OTC Prod. Unit No.: ~~22129~~ 129-217763

Drilling Finished Date: July 04, 2016

A: 217763 I

1st Prod Date: July 27, 2016

Completion Date: July 20, 2016

Drill Type: HORIZONTAL HOLE

Well Name: MATTHEWS 1-4HC

Purchaser/Measurer: MARKWEST

Location: ROGER MILLS 4 11N 23W
SW SE SE SE
230 FSL 430 FEL of 1/4 SEC
Latitude: 35.4512417 Longitude: -99.6299333
Derrick Elevation: 2185 Ground Elevation: 2160

First Sales Date: 7/26/2016

Operator: FOURPOINT ENERGY LLC 23429

100 SAINT PAUL ST STE 400
DENVER, CO 80206-5140

Completion Type	
X	Single Zone
	Multiple Zone
	Commingled

Location Exception	
Order No	
649965	

Increased Density	
Order No	
There are no Increased Density records to display.	

Casing and Cement							
Type	Size	Weight	Grade	Feet	PSI	SAX	Top of CMT
SURFACE	13-3/8"	48	H-40	662	740	970	SURFACE
PRODUCTION	5-1/2"	20	P-110	18084	11100	2245	12711
INTERMEDIATE	9-5/8"	40	J-55	6541	2570	550	3997

Liner								
Type	Size	Weight	Grade	Length	PSI	SAX	Top Depth	Bottom Depth
There are no Liner records to display.								

Total Depth: 18114

Packer	
Depth	Brand & Type
There are no Packer records to display.	

Plug	
Depth	Plug Type
There are no Plug records to display.	

November 21, 2016

8/17/16

404MRMN

1750

1 of 2

E2

R

RECEIVED

Form 1016
Rev. 2018TEST: INITIAL
 ANNUAL
 RETESTOKLAHOMA CORPORATION COMMISSION
Oil & Gas Conservation Division
Post Office Box 52000
Oklahoma City, Oklahoma 73152-2000

JUL 23 2019

Oklahoma Corporation
Commission**BACK PRESSURE TEST FOR NATURAL GAS WELLS**

OAC 165-10-17-6

DATE OF TEST:

6/5/2019

DATE OF 1ST SALES:

7/26/2016

Operator FourPoint Energy LLC			Operator # 23429		
Address 100 ST Paul Street, Suite 400		City Denver		ST CO	ZIP 80206
E-mail tcopeland@fourpointenergy.com		Ph 303-290-0990	Fax		Well Name/# Matthews 1-4HC ✓
Gas Volumes to be Reported to OCC by: FOURPOINTS ENERGY LLC		Gas Volume Reporter # 23429		API # 35-129-24075 ✓	
Producing Zone Marmaton 404MRMN ✓			OTC Lease # 129-217763		
Surface Location SW 1/4 SE 1/4 SE 1/4 SE 1/4		Sec 4	Twp 11N	Rge 23W	(OCC use) Allowable # 217763 I
Zone Location (if different) 1/4 1/4 1/4 1/4		Sec	Twp	Rge	County Roger Mills
Field					Spacing Size 640/SP#164759

COMPLETION: Single Multiple Zone Commingled Recompletion Date of Completion 07/20/16

Total Depth 18114	Plug Back Depth		Packer Set Depth		Elevation 2160 GL
Csg Size 5 1/2	WT 20	d 4.78	Depth Set 18084		Perfs. 13701 - 18036
Tbg Size 2 3/8	WT 4.70	d 2.00	Depth Set 12936		Perfs.
Prod. Thru Tubing		Res. Temp. F 237 @ 13239	Mean Grd. Temp. F 60		Atm. Press. PSIA 14.4
L 15869	H 15869	G _v .7136	%CO ₂ .808	%N ₂ .649	H ₂ S(ppm) Prover
				Meter Run X	Taps Flange

SHUT-IN DATA		FLOW DATA						TUBING DATA		CASING DATA		BHP DATA		FLOW (HRS)
PRESS	(HRS)	PROVER		DIFF		PRESS	TEMP	PRESS	TEMP	PRESS	TEMP	PRESS	TEMP	
		LINE SIZE	X	ORIFICE SIZE	PRESS (PSIG)	(INCHES) (ROOTS)	TEMP (F)	(PSIG)	(F)	(PSIG)	(F)	(PSIG)	(F)	
745	24	3.068		1.5	73	10	80	85	80	740	80			24

RATE OF FLOW CALCULATIONS

COEFFICIENT (24 HOUR)	$\sqrt{h_w P_m}$	PRESSURE P _m	FLOW TEMP. FACTOR F _t	GRAVITY FACTOR F _g	SUPER COMPRESS FACTOR F _{pv}	RATE OF FLOW (Q) MCFD
11.41	29.5635	87.4	.9813	1.1813	1.0087	395

P _r	TEMP. R	T _r	Z
.1311	539.7	1.3795	.9829

Gas/Liquid Hydrocarbon Ratio	131.75	MCF/BBL
API Gravity of Liquid Hydrocarbons	60	Deg.
Specific Gravity Separator Gas	.7136	
Specific Gravity Flowing Fluid	.7346	
Critical Pressure	666.8	PSIA
Critical Pressure	665.98	PSIA
Critical Temperature	391.21	R
Critical Temperature	397.72	R

P_c 759.4 (PSIA) P_c² 576.69

P _w	P _w ²	P _c ² - P _w ²
*683.4	467.04	109.65

$$[1] \frac{P_c^2}{P_c^2 - P_w^2} = \frac{5.2592}{(Not\ to\ exceed\ 5.263)}$$

$$[2] \left[\frac{P_c^2}{P_c^2 - P_w^2} \right]^n = 4.100 \quad \text{WHAOF=Q} \quad \left[\frac{P_c^2}{P_c^2 - P_w^2} \right]^n = \frac{1620}{1609}$$

Calculated wellhead open flow 1620 MCFD @ 14.65 Angle of Slope Slope, n .850

Remarks *90% shut in - No Packer test calculated using casing pressures

Oil Produced 3 BBLs Water Produced 98 BBLs

Approved by Commission: *JR* Conducted by: John Digby Calculated by: Thurmond-McGlothlin Checked by:WITNESSED - OCC FIELD STAFF: Y N NAME: Kyle Juey (over) DATE: 6-13-19*EZ**JR*