

Oklahoma Corporation Commission  
 Oil & Gas Conservation Division  
 Post Office Box 52000  
 Oklahoma City, Oklahoma 73152-2000  
 Rule 165: 10-3-25

Form 1002A

API No.: 35003232300000

**Completion Report**

Spud Date: August 07, 2015

OTC Prod. Unit No.: 003-218019

Drilling Finished Date: August 28, 2015

1st Prod Date: October 05, 2016

Completion Date: September 25, 2016

**Drill Type: HORIZONTAL HOLE**

Min Gas Allowable: Yes

Well Name: LESLIE LIVING TRUST 20-25-12 1H

Purchaser/Measurer: CHESAPEAKE OPERATING LLC

Location: ALFALFA 20 25N 12W  
 NE NE NE NE  
 273 FNL 320 FEL of 1/4 SEC  
 Derrick Elevation: 1410 Ground Elevation: 1388

First Sales Date: 10/05/2016

Operator: CHESAPEAKE OPERATING LLC 17441  
 PO BOX 18496  
 6100 N WESTERN AVE  
 OKLAHOMA CITY, OK 73154-0496

Completion Type	
X	Single Zone
	Multiple Zone
	Commingled

Location Exception
Order No
643437

Increased Density
Order No
643436

Casing and Cement							
Type	Size	Weight	Grade	Feet	PSI	SAX	Top of CMT
SURFACE	9 5/8	36	J-55	1217		455	SURFACE
PRODUCTION	7	26	P-110EC	6589		305	3451

Liner								
Type	Size	Weight	Grade	Length	PSI	SAX	Top Depth	Bottom Depth
LINER	4 1/2	11.6	P-110EC	4466	0	0	6174	10640

**Total Depth: 10640**

Packer	
Depth	Brand & Type
6106	AS-3

Plug	
Depth	Plug Type
There are no Plug records to display.	

Initial Test Data										
Test Date	Formation	Oil BBL/Day	Oil-Gravity (API)	Gas MCF/Day	Gas-Oil Ratio Cu FT/BBL	Water BBL/Day	Pumpin or Flowing	Initial Shut-In Pressure	Choke Size	Flow Tubing Pressure
Oct 30, 2016	MISSISSIPPI LIME	63		1697	26937	2704	ARTIFICIA			151

Completion and Test Data by Producing Formation										
Formation Name: MISSISSIPPI LIME			Code: 351MSSLM			Class: GAS				
<b>Spacing Orders</b>				<b>Perforated Intervals</b>						
<b>Order No</b>	<b>Unit Size</b>			<b>From</b>			<b>To</b>			
43678	640			There are no Perf. Intervals records to display.						
<b>Acid Volumes</b>				<b>Fracture Treatments</b>						
9,500 GALLONS HCL ACID				99,139 BARRELS FRAC FLUID, 1,002,280 POUNDS PROPPANT						

Formation	Top
MISSISSIPPI LIME	6222

Were open hole logs run? No

Date last log run:

Were unusual drilling circumstances encountered? No

Explanation:

Other Remarks
UNCEMENTED LINER; OPEN HOLE PACKER SYSTEM. OCC - THIS WELL IS AN OPEN HOLE COMPLETION FROM BOTTOM OF THE 7" CASING AT 6,589' TO TERMINUS AT 10,640'. THE 4 1/2" LINER, AS MENTIONED, IS NOT CEMENTED. THIS DOCUMENT IS ACCEPTED BASED ON THE DATA SUBMITTED THE FINAL LOCATION EXCEPTION HAS NOT BEEN SUBMITTED.

Lateral Holes
Sec: 20 TWP: 25N RGE: 12W County: ALFALFA
SE SW SE SE
184 FSL 672 FEL of 1/4 SEC
Depth of Deviation: 5625 Radius of Turn: 477 Direction: 180 Total Length: 4418
Measured Total Depth: 10640 True Vertical Depth: 6102 End Pt. Location From Release, Unit or Property Line: 184

FOR COMMISSION USE ONLY
Status: Accepted
1134898

API NO. 35-003-23230  
 OTC PROD.  
 UNIT NO. 003-218019

PLEASE TYPE OR USE BLACK INK ONLY  
 NOTE: Attach copy of original 1002A if recompletion or reentry.

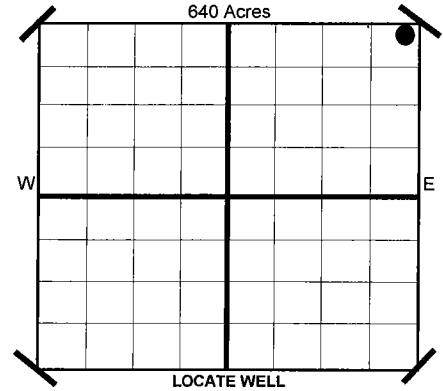
OKLAHOMA CORPORATION COMMISSION  
 Oil & Gas Conservation Division  
 Post Office Box 52000  
 Oklahoma City, Oklahoma 73152-2000  
 Rule 165:10-3-25

RECEIVED NOV 02 2016

ORIGINAL AMENDED  
 Reason Amended  
 TYPE OF DRILLING OPERATION  
 STRAIGHT HOLE SERVICE WELL  DIRECTIONAL HOLE  HORIZONTAL HOLE  
 If directional or horizontal, see reverse for bottom hole location.

COMPLETION REPORT

COUNTY	ALFALFA	SEC	20	TWP	25N	RGE	12W	SPUD DATE	8/7/2015	
LEASE NAME	LESLIE LIVING TRUST 20-25-12	WELL NO	1H	DATE OF WELL COMPLETION	8/28/2015					
SHL	NE 1/4 NE 1/4 NE 1/4 NE 1/4	FNL	273	FEL	1/4 SEC	320	DATE OF WELL COMPLETION	9/25/2016	1ST PROD DATE	10/5/2016
ELEVATION	Derrick Ft 1,410	Ground	1,388	Latitude (if Known)						
OPERATOR NAME	CHESAPEAKE OPERATING, L.L.C.				OTC/OCC OPERATOR NO.	17441				
ADDRESS	P.O. BOX 18496									
CITY	OKLAHOMA CITY	STATE	OK	ZIP	73154					



COMPLETION TYPE  
 SINGLE ZONE  
 MULTIPLE ZONE  
 Application Date  
 COMMINGLED  
 Application Date  
 LOCATION EXCEPTION ORDER NO. 643437 (INTERIM)  
 INCREASED DENSITY ORDER NO. 643436

CASING & CEMENT (Form 1002C must be attached)

TYPE	SIZE	WEIGHT	GRADE	FEET	PSI	SAX	TOP	
CONDUCTOR								
SURFACE	9 5/8"	36#	J-55	1,217		455	SURFACE	
INTERMEDIATE								
PRODUCTION	7"	26#	P-110EC	6,589		305	3,451	
UNCEMENTED LINER	4 1/2"	11.6#	P-110EC	6,174-10,640		*	0	
							TOTAL DEPTH	10,640

PACKER @ 6.106 BRAND & TYPE AS-3 PLUG @ TYPE PLUG @ TYPE  
 PACKER @ BRAND & TYPE PLUG @ TYPE PLUG @ TYPE

COMPLETION & TEST DATA BY PRODUCING FORMATION

FORMATION	MISSISSIPPI LIME						
SPACING & SPACING ORDER NUMBER	640 43678						
CLASS: Oil, Gas, Dry, Inj. Disp, Comm Disp, Svc	GAS						
PERFORATED INTERVALS	OPEN HOLE PACKER SYSTEM						
ACID/VOLUME	HCL Acid 9,500 GALS						
FRACTURE TREATMENT (Fluids/Prop Amounts)	Frac Fluid 99,139 BBLs Proppant 1,002,280 LBS						

Report to Frac Focus

Minimum Gas Allowable (165:10-17-7) Gas Purchaser/Measurer Chesapeake Operating, L.L.C.  
 OR Oil Allowable (165:10-13-3) 1st Sales Date 10/5/2016

INITIAL TEST DATA

INITIAL TEST DATE	10/30/2016			
OIL-BBL/DAY	63			
OIL-GRAVITY ( API)				
GAS-MCF/DAY	1,697			
GAS-OIL RATIO CU FT/BBL	26,937			
WATER-BBL/DAY	2,704			
PUMPING OR FLOWING	ARTIFICIAL LIFT			
INITIAL SHUT-IN PRESSURE				
CHOKE SIZE				
FLOW TUBING PRESSURE	151			

AS SUBMITTED

A record of the formations drilled through, and pertinent remarks are presented on the reverse. I declare that I have knowledge of the contents of this report and am authorized by my organization to make this report, which was prepared by me or under my supervision and direction, with the data and facts stated herein to be true, correct, and complete to the best of my knowledge and belief.

*JP Powell*  
 SIGNATURE JP Powell, Sr. Regulatory Analyst 11/1/2016 405-848-8000  
 P.O. BOX 18496 OKLAHOMA CITY OK 73154 ip.powell@chk.com  
 ADDRESS CITY STATE ZIP EMAIL ADDRESS

PLEASE TYPE OR USE BLACK INK ONLY  
FORMATION RECORD

Give formation names and tops, if available, or descriptions and thickness of formations drilled through. Show intervals cored or drillstem tested.

LEASE NAME LESLIE LIVING TRUST 20-25-12

WELL NO. 1H

NAMES OF FORMATIONS	TOP
MISSISSIPPI LIME	6,222

FOR COMMISSION USE ONLY

ITD on file  YES  NO

APPROVED \_\_\_\_\_ DISAPPROVED \_\_\_\_\_

2) Reject Codes

\_\_\_\_\_

\_\_\_\_\_

\_\_\_\_\_

\_\_\_\_\_

Were open hole logs run?  yes  no

Date last log was run N/A

Was CO<sub>2</sub> encountered?  yes  no at what depths?

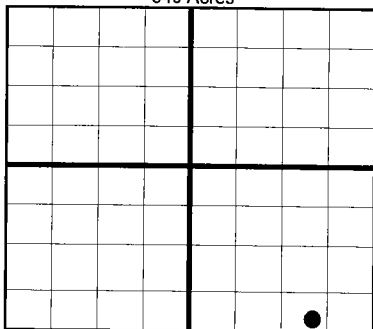
Was H<sub>2</sub>S encountered?  yes  no at what depths?

Were unusual drilling circumstances encountered?  yes  no  
If yes, briefly explain.

Other remarks: \*UNCEMENTED LINER; OPEN HOLE PACKER SYSTEM

*OCC - This well is an open hole completion from bottom of the 7" casing at 6,589' to terminus at 10,640'. The 4 1/2" liner as mentioned is not cemented*

640 Acres

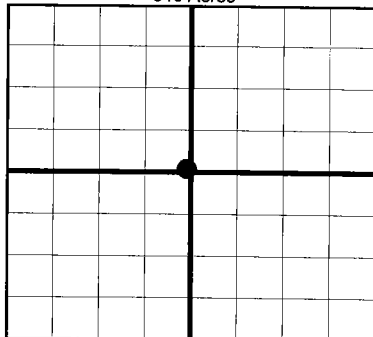


If more than three drainholes are proposed, attach a separate sheet indicating the necessary information.

Direction must be stated in degrees azimuth. Please note, the horizontal drainhole and its end point must be located within the boundaries of the lease or spacing unit.

**Directional surveys are required for all drainholes and directional wells.**

640 Acres



**BOTTOM HOLE LOCATION FOR DIRECTIONAL HOLE**

SEC	TWP	RGE	COUNTY				
Spot Location	1/4	1/4	1/4	1/4	Feet From 1/4 Sec Lines	FSL	FWL
Measured Total Depth	True Vertical Depth		BHL From Lease, Unit, or Property Line:				

**BOTTOM HOLE LOCATION FOR HORIZONTAL HOLE: (LATERALS)**

LATERAL #1

SEC	TWP	RGE	COUNTY				
20	25N	12W	ALFALFA				
Spot Location	SE 1/4	SW 1/4	SE 1/4	SE 1/4	Feet From 1/4 Sec Lines	FSL	FEL
Depth of Deviation	5,625	Radius of Turn	477	Direction	180	Total Length	4,418
Measured Total Depth	10,640	True Vertical Depth	6,102	BHL From Lease, Unit, or Property Line: 184			

**LATERAL #2**

SEC	TWP	RGE	COUNTY				
Spot Location	1/4	1/4	1/4	1/4	Feet From 1/4 Sec Lines	FSL	FWL
Depth of Deviation	Radius of Turn		Direction		Total Length		
Measured Total Depth	True Vertical Depth		BHL From Lease, Unit, or Property Line:				

**LATERAL #3**

SEC	TWP	RGE	COUNTY				
Spot Location	1/4	1/4	1/4	1/4	Feet From 1/4 Sec Lines	FSL	FWL
Depth of Deviation	Radius of Turn		Direction		Total Length		
Measured Total Depth	True Vertical Depth		BHL From Lease, Unit, or Property Line:				

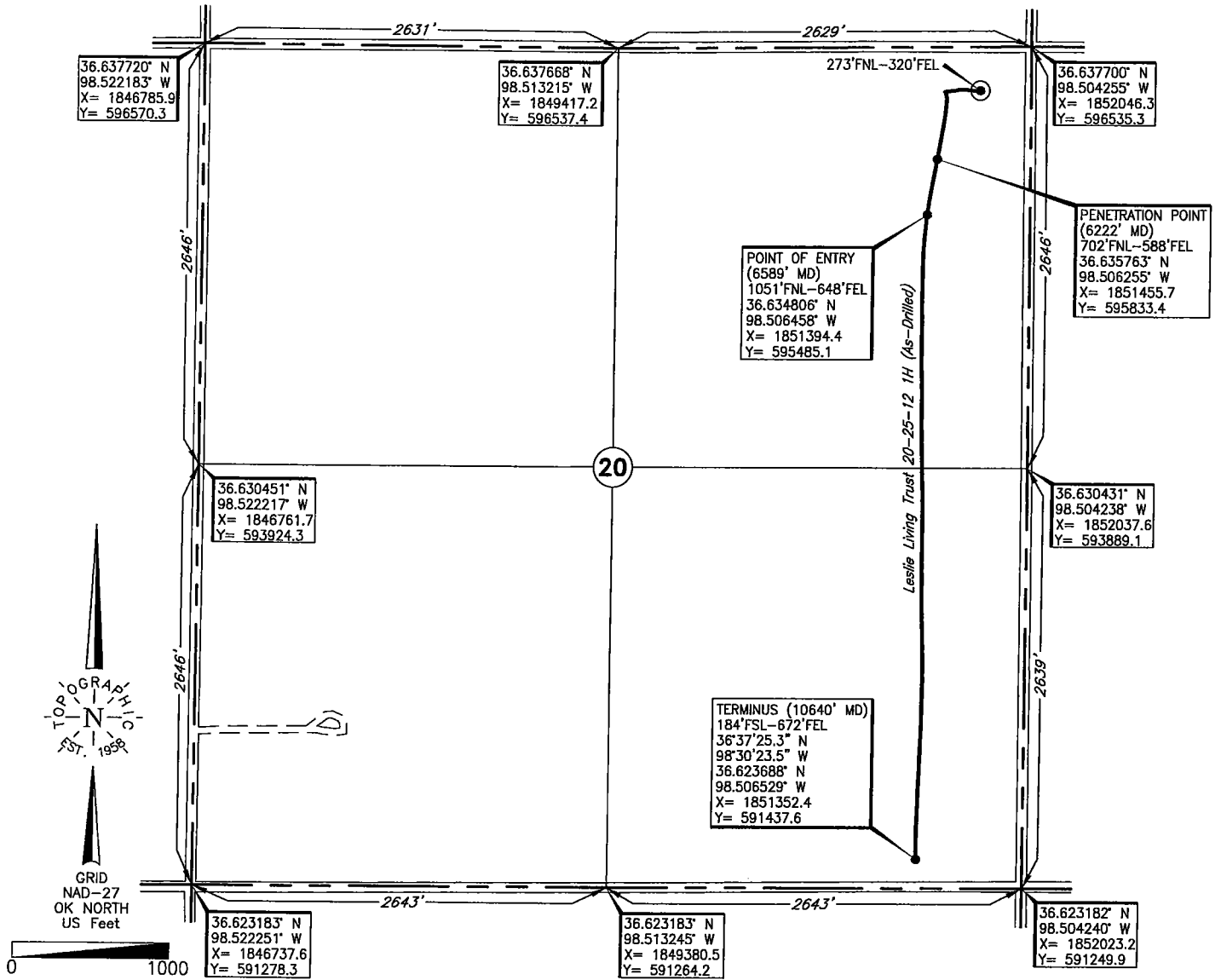
**TOPOGRAPHIC LAND SURVEYORS OF OKLAHOMA**

6709 NORTH CLASSEN BLVD., OKLA. CITY, OKLA. 73116 \* LOCAL (405) 843-4847 \* OUT OF STATE (800) 654-3219  
 Certificate of Authorization No. 1293. LS

ALFALFA

County, Oklahoma

273'FNL-320'FEL Section 20 Township 25N Range 12W I.M.



Operator: CHESAPEAKE OPERATING, L.L.C.

Lease Name: LESLIE LIVING TRUST 20-25-12

Well No.: 1H

**ELEVATION:**  
1388' Gr. at Level Pad

Topography & Vegetation Loc. fell on level pad, ±238' South of E-W power line

Good Drill Site? Yes Reference Stakes or Alternate Location  
 Stakes Set None

Best Accessibility to Location From North off county road

Distance & Direction  
 from Hwy Jct or Town From Carmen, Ok, go ±4 miles North on black top, then ±2  
miles West to the NE Cor. of Sec. 20-T25N-R12W

DATUM: NAD-27  
 LAT: 36°38'13.0"N  
 LONG: 98°30'19.2"W  
 LAT: 36.636946° N  
 LONG: 98.505344° W  
 STATE PLANE  
 COORDINATES: (US Feet)  
 ZONE: OK NORTH  
 X: 1851725.4  
 Y: 596262.6

266657 Date of Drawing: Oct. 11, 2016  
 Invoice # 245404 Date Staked: Jun. 2, 2015 JP

**FINAL AS-DRILLED PLAT**

AS-DRILLED INFORMATION  
 FURNISHED BY CHESAPEAKE OPERATING, L.L.C.

This information was gathered with a GPS receiver with ±1 foot Horiz./Vert. accuracy

API NO. 35-003-23230  
 OTC PROD. UNIT NO. 003-218019

PLEASE TYPE OR USE BLACK INK ONLY  
 NOTE: Attach copy of original 1002A if recompletion or reentry.

10/5/16

OKLAHOMA CORPORATION COMMISSION  
 Oil & Gas Conservation Division  
 Post Office Box 52000  
 Oklahoma City, Oklahoma 73152-2000  
 Rule 165-10-3-25

RECEIVED NOV 02 2016 1016EZ

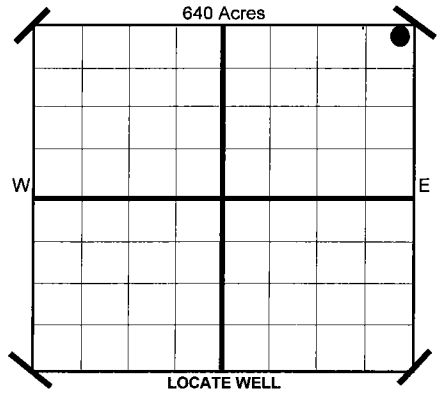
A: 000639 #25

ORIGINAL AMENDED Reason Amended

COMPLETION REPORT

TYPE OF DRILLING OPERATION  
 STRAIGHT HOLE SERVICE WELL  DIRECTIONAL HOLE  HORIZONTAL HOLE  
 If directional or horizontal, see reverse for bottom hole location.

SPUD DATE 8/7/2015  
 DRLG FINISHED DATE 8/28/2015  
 DATE OF WELL COMPLETION 9/25/2016  
 1ST PROD DATE 10/5/2016  
 RECOMP DATE  
 Longitude (if Known)  
 OTC/OCC OPERATOR NO. 17441



COUNTY ALFALFA SEC 20 TWP 25N RGE 12W  
 LEASE NAME LESLIE LIVING TRUST 20-25-12 WELL NO 1H  
 SHL NE 1/4 NE 1/4 NE 1/4 NE 1/4 273 1/4 SEC 320  
 ELEVATION Derrick Fl 1,410 Ground 1,388  
 OPERATOR NAME CHESAPEAKE OPERATING, L.L.C. ADDRESS P.O. BOX 18496  
 CITY OKLAHOMA CITY STATE OK ZIP 73154

COMPLETION TYPE  
 SINGLE ZONE  
 MULTIPLE ZONE Application Date  
 COMMINGLED Application Date  
 LOCATION EXCEPTION ORDER NO. 643437 (INTERIM)  
 INCREASED DENSITY ORDER NO. 643436

CASING & CEMENT (Form 1002C must be attached)

TYPE	SIZE	WEIGHT	GRADE	FEET	PSI	SAX	TOP	
CONDUCTOR								
SURFACE	9 5/8"	36#	J-55	1,217		455	SURFACE	
INTERMEDIATE								
PRODUCTION	7"	26#	P-110EC	6,589		305	3,451	
UNCEMENTED LINER	4 1/2"	11.6#	P-110EC	6,174-10,640		*	0	
							TOTAL DEPTH	10,640

PACKER @ 6.106 BRAND & TYPE AS-3 PLUG @ TYPE PLUG @ TYPE  
 PACKER @ BRAND & TYPE PLUG @ TYPE PLUG @ TYPE

COMPLETION & TEST DATA BY PRODUCING FORMATION

FORMATION	SPACING & SPACING ORDER NUMBER	CLASS: Oil, Gas, Dry, Inj. Disp, Comm Disp, Svc	PERFORATED INTERVALS	ACID/VOLUME	FRACTURE TREATMENT (Fluids/Prop Amounts)
MISSISSIPPI LIME	640 43678	GAS	OPEN HOLE PACKER SYSTEM	HCL Acid 9,500 GALS Frac Fluid 99,139 BBLs Proppant 1,002,280 LBS	

351MSSLM

Report to Frac Focus

Minimum Gas Allowable (165-10-17-7) Gas Purchaser/Measurer Chesapeake Operating, L.L.C.  
 OR Oil Allowable (165-10-13-3) 1st Sales Date 10/5/2016

INITIAL TEST DATA

INITIAL TEST DATE	10/30/2016
OIL-BBL/DAY	63
OIL-GRAVITY (API)	
GAS-MCF/DAY	1,697
GAS-OIL RATIO CU FT/BBL	26,937
WATER-BBL/DAY	2,704
PUMPING OR FLOWING	ARTIFICIAL LIFT
INITIAL SHUT-IN PRESSURE	
CHOKE SIZE	
FLOW TUBING PRESSURE	151

AS SUBMITTED

A record of the formations drilled through, and pertinent remarks are presented on the reverse. I declare that I have knowledge of the contents of this report and am authorized by my organization to make this report which was prepared by me or under my supervision and direction, with the data and facts stated herein to be true, correct, and complete to the best of my knowledge and belief.

JP Powell, Sr. Regulatory Analyst  
 SIGNATURE NAME (PRINT OR TYPE) DATE 11/1/2016 PHONE NUMBER 405-848-8000  
 P.O. BOX 18496 OKLAHOMA CITY OK 73154  
 ADDRESS CITY STATE ZIP EMAIL ADDRESS jp.powell@chk.com

EZ

SCANNED

Form 1004