

Oklahoma Corporation Commission  
 Oil & Gas Conservation Division  
 Post Office Box 52000  
 Oklahoma City, Oklahoma 73152-2000  
 Rule 165: 10-3-25

Form 1002A

API No.: 35103237290003

**Completion Report**

Spud Date: April 22, 2002

OTC Prod. Unit No.: 103-109310

Drilling Finished Date: April 26, 2002

**Amended**

1st Prod Date: June 08, 2002

Amend Reason: CHANGE WELL CLASSIFICATION TO TEMPORARILY ABANDONED

Completion Date: June 10, 2002

Recomplete Date: October 25, 2016

**Drill Type: STRAIGHT HOLE**

Well Name: YOST 5-22

Purchaser/Measurer:

Location: NOBLE 22 23N 2W  
 S2 NW SW NE  
 909 FSL 330 FWL of 1/4 SEC  
 Derrick Elevation: 1054 Ground Elevation: 1044

First Sales Date:

Operator: CHESAPEAKE OPERATING LLC 17441  
 PO BOX 18496  
 6100 N WESTERN AVE  
 OKLAHOMA CITY, OK 73154-0496

Completion Type	
<input type="checkbox"/>	Single Zone
<input type="checkbox"/>	Multiple Zone
<input checked="" type="checkbox"/>	Commingled

Location Exception
Order No
There are no Location Exception records to display.

Increased Density
Order No
There are no Increased Density records to display.

Casing and Cement							
Type	Size	Weight	Grade	Feet	PSI	SAX	Top of CMT
SURFACE	8 5/8	24	J-55	330		220	SURFACE
PRODUCTION	5 1/2	17	J-55	3090		310	1700

Liner								
Type	Size	Weight	Grade	Length	PSI	SAX	Top Depth	Bottom Depth
There are no Liner records to display.								

**Total Depth: 3090**

Packer	
Depth	Brand & Type
There are no Packer records to display.	

Plug	
Depth	Plug Type
2750	CIBP

Initial Test Data										
Test Date	Formation	Oil BBL/Day	Oil-Gravity (API)	Gas MCF/Day	Gas-Oil Ratio Cu FT/BBL	Water BBL/Day	Pumpin or Flowing	Initial Shut-In Pressure	Choke Size	Flow Tubing Pressure
There are no Initial Data records to display.										

**Completion and Test Data by Producing Formation**

Formation Name: PAWHUSKA

Code: 406PHSK

Class: TA

**Spacing Orders**

**Order No**

**Unit Size**

There are no Spacing Order records to display.

**Perforated Intervals**

**From**

**To**

2088

2104

**Acid Volumes**

There are no Acid Volume records to display.

**Fracture Treatments**

There are no Fracture Treatments records to display.

Formation Name: HOOVER

Code: 406HOVR

Class: TA

**Spacing Orders**

**Order No**

**Unit Size**

There are no Spacing Order records to display.

**Perforated Intervals**

**From**

**To**

2128

2194

**Acid Volumes**

There are no Acid Volume records to display.

**Fracture Treatments**

There are no Fracture Treatments records to display.

Formation Name: ELGIN

Code: 406ELGN

Class: TA

**Spacing Orders**

**Order No**

**Unit Size**

There are no Spacing Order records to display.

**Perforated Intervals**

**From**

**To**

2329

2418

**Acid Volumes**

There are no Acid Volume records to display.

**Fracture Treatments**

There are no Fracture Treatments records to display.

Formation Name: OREAD

Code: 406ORED

Class: TA

**Spacing Orders**

**Order No**

**Unit Size**

There are no Spacing Order records to display.

**Perforated Intervals**

**From**

**To**

2450

2485

**Acid Volumes**

There are no Acid Volume records to display.

**Fracture Treatments**

There are no Fracture Treatments records to display.

Formation Name: ENDICOTT

Code: 406ENDC

Class: TA

**Spacing Orders**

Order No	Unit Size
There are no Spacing Order records to display.	

**Perforated Intervals**

From	To
2539	2574

**Acid Volumes**

There are no Acid Volume records to display.
--

**Fracture Treatments**

There are no Fracture Treatments records to display.
--

Formation Name: TONKAWA

Code: 406TNKW

Class: DRY

**Spacing Orders**

Order No	Unit Size
There are no Spacing Order records to display.	

**Perforated Intervals**

From	To
2843	2877

**Acid Volumes**

There are no Acid Volume records to display.
--

**Fracture Treatments**

There are no Fracture Treatments records to display.
--

Formation Name: PAWHUSKA-HOOVER-ELGIN  
-OREAD-ENDICOTT

Code:

Class: TA

Formation	Top
HERINGTON	583
FT RILEY	774
EBERT	1816
PAWHUSKA	2086
HOOVER	2127
ELGIN	2329
OREAD	2443
ENDICOTT	2539
LOVELL	2633
HASKELL	2793
TONKAWA	2844

Were open hole logs run? Yes

Date last log run: April 26, 2002

Were unusual drilling circumstances encountered? No

Explanation:

**Other Remarks**

OCC - COMMINGLED BY ORDER NUMBER 535497

**FOR COMMISSION USE ONLY**

1134893

Status: Accepted

API NO. 35-103-23729  
 OTC PROD.  
 UNIT NO. 103-109310

PLEASE TYPE OR USE BLACK INK ONLY  
 NOTE: Attach copy of original 1002A if recompletion or reentry.

OKLAHOMA CORPORATION COMMISSION  
 Oil & Gas Conservation Division  
 Post Office Box 52000  
 Oklahoma City, Oklahoma 73152-2000  
 Rule 165-10-3-25

RECEIVED

Form 1002A  
 July, 2009

NOV 02 2016

ORIGINAL  
 AMENDED  
 Reason Amended *Change well class to Temporarily Abandoned*

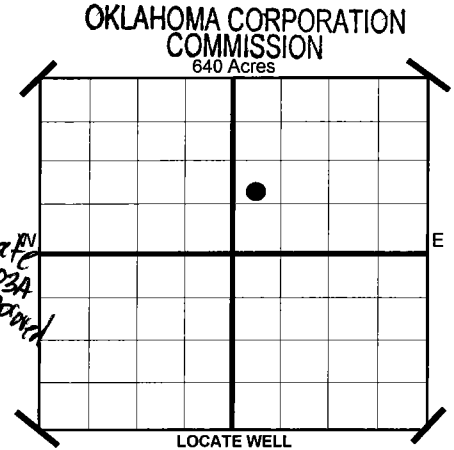
TYPE OF DRILLING OPERATION  
 STRAIGHT HOLE  DIRECTIONAL HOLE  HORIZONTAL HOLE

If directional or horizontal, see reverse for bottom hole location.

COUNTY NOBLE SEC 22 TWP 23N RGE 02W  
 LEASE NAME YOST WELL NO 5-22  
 SPBL S2 1/4 NW 1/4 SW 1/4 NE 1/4 FSL 909 FWL OF 1/4 SEC 330  
 ELEVATION Derrick Fl 1,054 Ground 1,044 Latitude (if Known)  
 OPERATOR NAME CHESAPEAKE OPERATING, L.L.C. OTC/OCC OPERATOR NO. 17441  
 ADDRESS P.O. BOX 18496  
 CITY OKLAHOMA CITY STATE OK ZIP 73154

COMPLETION REPORT

SPUD DATE 4/22/2002  
 DRLG FINISHED DATE 4/26/2002  
 DATE OF WELL COMPLETION 6/10/2002  
 1ST PROD DATE 6/8/2002  
 RECOMP DATE *10-25-2016*  
 Longitude (if Known)  
 OPERATOR NAME CHESAPEAKE OPERATING, L.L.C. OTC/OCC OPERATOR NO. 17441



COMPLETION TYPE

SINGLE ZONE  
 MULTIPLE ZONE  
 COMMINGLED  
 Application Date 535497  
 Order No.  
 LOCATION EXCEPTION ORDER NO. N/A  
 INCREASED DENSITY ORDER NO. N/A

CASING & CEMENT (Form 1002C must be attached)

TYPE	SIZE	WEIGHT	GRADE	FEET	PSI	SAX	TOP	
CONDUCTOR								
SURFACE	8 5/8"	24#	J-55	330		220	Surface	
INTERMEDIATE								
PRODUCTION	5 1/2"	17#	J-55	3,090		310	1,700	
LINER								
							TOTAL DEPTH	3,090

PACKER @ \_\_\_\_\_ BRAND & TYPE \_\_\_\_\_  
 PLUG @ \_\_\_\_\_ TYPE \_\_\_\_\_

PLUG @ \_\_\_\_\_ TYPE \_\_\_\_\_ PLUG @ 2,750 TYPE CIBP  
 PLUG @ \_\_\_\_\_ TYPE \_\_\_\_\_ PLUG @ \_\_\_\_\_ TYPE \_\_\_\_\_

COMPLETION & TEST DATA BY PRODUCING FORMATION

FORMATION	PAWHUSKA	HOOVER	ELGIN	OREAD	ENDICOTT	TONKAWA
SPACING & SPACING ORDER NUMBER	UNSPACED	UNSPACED	UNSPACED	UNSPACED	UNSPACED	UNSPACED
CLASS: Oil, Gas, Dry, Inj, Disp, Comm Disp, Svc	Temporarily Abandon	Temporarily Abandon	Temporarily Abandon	Temporarily Abandon	Temporarily Abandon	Below Bridge Plug <i>BY</i>
PERFORATED INTERVALS	2088-2104	2128-2194	2329-2418	2450-2485	2539-2574	2843-2877
ACID/VOLUME						
FRACTURE TREATMENT (Fluids/Prop Amounts)						

**AS SUBMITTED**

Minimum Gas Allowable (165:10-17-7)  OR Gas Purchaser/Measurer \_\_\_\_\_  
 Oil Allowable (165:10-13-3) \_\_\_\_\_ 1st Sales Date \_\_\_\_\_

INITIAL TEST DATA

INITIAL TEST DATE	N/A
OIL-BBL/DAY	
OIL-GRAVITY ( API)	
GAS-MCF/DAY	
GAS-OIL RATIO CU FT/BBL	Commingled the Pawhuska, Hoover, Elgin, Oread & Endicott
WATER-BBL/DAY	
PUMPING OR FLOWING	
INITIAL SHUT-IN PRESSURE	
CHOKE SIZE	
FLOW TUBING PRESSURE	

A record of the formations drilled through, and pertinent remarks are presented on the reverse. I declare that I have knowledge of the contents of this report and am authorized by my organization to make this report, which was prepared by me or under my supervision and direction, with the data and facts stated herein to be true, correct, and complete to the best of my knowledge and belief.

*JP Powell*  
 SIGNATURE JP POWELL, SR. REGULATORY ANALYST  
 P.O. BOX 18496 OKLAHOMA CITY OK 73154  
 ADDRESS CITY STATE ZIP  
 10/24/2016 DATE  
 405-848-8000 PHONE NUMBER  
 ip.powell@chk.com EMAIL ADDRESS

PLEASE TYPE OR USE BLACK INK ONLY  
FORMATION RECORD

Give formation names and tops, if available, or descriptions and thickness of formations drilled through. Show intervals cored or drillstem tested.

LEASE NAME YOST

WELL NO. 5-22

NAMES OF FORMATIONS	TOP
HERRINGTON	583
FT. RILEY	774
EBERT	1,816
PAWHUSKA	2,086
HOOVER	2,127
ELGIN	2,329
OREAD	2,443
ENDICOTT	2,539
LOVELL	2,633
HASKELL	2,793
TONKAWA	2,844

FOR COMMISSION USE ONLY

ITD on file  YES  NO

APPROVED \_\_\_\_\_ DISAPPROVED \_\_\_\_\_

2) Reject Codes \_\_\_\_\_

\_\_\_\_\_

\_\_\_\_\_

\_\_\_\_\_

Were open hole logs run?  yes  no

Date Last log was run 4/26/2002

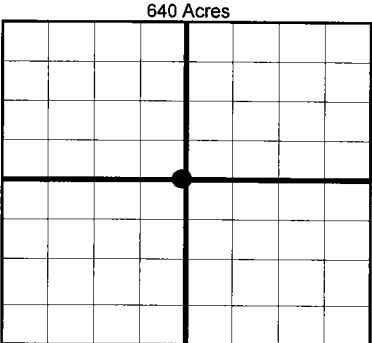
Was CO<sub>2</sub> encountered?  yes  no at what depths?

Was H<sub>2</sub>S encountered?  yes  no at what depths?

Were unusual drilling circumstances encountered?  yes  no

If yes, briefly explain.

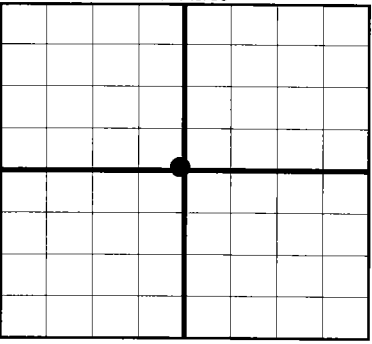
Other remarks: occ - commingled by order 535497



If more than three drainholes are proposed, attach a separate sheet indicating the necessary information.

Direction must be stated in degrees azimuth. Please note, the horizontal drainhole and its end point must be located within the boundaries of the lease or spacing unit.

**Directional surveys are required for all drainholes and directional wells.**



**BOTTOM HOLE LOCATION FOR DIRECTIONAL HOLE**

SEC	TWP	RGE	COUNTY				
Spot Location	1/4	1/4	1/4	1/4	Feet From 1/4 Sec Lines	FSL	FWL
Measured Total Depth	True Vertical Depth		BHL From Lease, Unit, or Property Line:				

**BOTTOM HOLE LOCATION FOR HORIZONTAL HOLE: (LATERALS)**

**LATERAL #1**

SEC	TWP	RGE	COUNTY				
Spot Location	1/4	1/4	1/4	1/4	Feet From 1/4 Sec Lines	FSL	FWL
Depth of Deviation	Radius of Turn		Direction	Total Length			
Measured Total Depth	True Vertical Depth		BHL From Lease, Unit, or Property Line:				

**LATERAL #2**

SEC	TWP	RGE	COUNTY				
Spot Location	1/4	1/4	1/4	1/4	Feet From 1/4 Sec Lines	FSL	FWL
Depth of Deviation	Radius of Turn		Direction	Total Length			
Measured Total Depth	True Vertical Depth		BHL From Lease, Unit, or Property Line:				

**LATERAL #3**

SEC	TWP	RGE	COUNTY				
Spot Location	1/4	1/4	1/4	1/4	Feet From 1/4 Sec Lines	FSL	FWL
Depth of Deviation	Radius of Turn		Direction	Total Length			
Measured Total Depth	True Vertical Depth		BHL From Lease, Unit, or Property Line:				