

Oklahoma Corporation Commission
Oil & Gas Conservation Division
Post Office Box 52000
Oklahoma City, Oklahoma 73152-2000
Rule 165: 10-3-25

Form 1002A

API No.: 35045236200000

Completion Report

Spud Date: August 07, 2016

OTC Prod. Unit No.: 04521793300000

Drilling Finished Date: August 21, 2016

1st Prod Date: September 22, 2016

Completion Date: August 24, 2016

Drill Type: HORIZONTAL HOLE

Well Name: NIGHTENGALE 8 11HX

Purchaser/Measurer: ETC FIELD SERVICES

Location: ELLIS 17 20N 26W
SW SE SE NE
222 FSL 500 FEL of 1/4 SEC
Latitude: 99.592542 Longitude: 36.123666
Derrick Elevation: 2362 Ground Elevation: 2343

First Sales Date: 09-24-2016

Operator: JONES ENERGY LLC 21043

807 LAS CIMAS PKWY STE 350
AUSTIN, TX 78746-6193

Completion Type	
X	Single Zone
	Multiple Zone
	Commingled

Location Exception
Order No
655234

Increased Density
Order No
655264

Casing and Cement							
Type	Size	Weight	Grade	Feet	PSI	SAX	Top of CMT
SURFACE	9.625	36	J55	716		430	SURFACE
INTERMEDIATE	7	26	9110	8252		370	2584

Liner								
Type	Size	Weight	Grade	Length	PSI	SAX	Top Depth	Bottom Depth
LINER	4.5	14	L80	7822	0	0	7222	15044

Total Depth: 15065

Packer	
Depth	Brand & Type
There are no Packer records to display.	

Plug	
Depth	Plug Type
There are no Plug records to display.	

Initial Test Data										
Test Date	Formation	Oil BBL/Day	Oil-Gravity (API)	Gas MCF/Day	Gas-Oil Ratio Cu FT/BBL	Water BBL/Day	Pumpin or Flowing	Initial Shut-In Pressure	Choke Size	Flow Tubing Pressure
Oct 01, 2016	CLEVELAND	497	44	1882	3787	351	FLOWING	1300	47/64	500

Completion and Test Data by Producing Formation											
Formation Name: CLEVELAND				Code: 405CLVD				Class: OIL			
Spacing Orders						Perforated Intervals					
Order No			Unit Size			From			To		
132531			640			8521			15044		
Acid Volumes						Fracture Treatments					
There are no Acid Volume records to display.						88642 BBLS FLUID 3583600 LBS PROPPANT					

Formation	Top
CLEVELAND	8050

Were open hole logs run? No

Date last log run:

Were unusual drilling circumstances encountered? No

Explanation:

Other Remarks
OCC: THE FINAL LOCATION EXCEPTION ORDER HAS NOT BEEN ISSUED. WE HAVE ACCEPTED OPERATORS DATA AS SUBMITTED. IRREGULAR SECTION.

Lateral Holes
Sec: 8 TWP: 20N RGE: 26W County: ELLIS SW NE NE NW 361 FNL 543 FEL of 1/4 SEC Depth of Deviation: 7404 Radius of Turn: 650 Direction: 360 Total Length: 6813 Measured Total Depth: 15065 True Vertical Depth: 7988 End Pt. Location From Release, Unit or Property Line: 361

FOR COMMISSION USE ONLY	
Status: Accepted	1134835

"AS-DRILLED" WELL LOCATION PLAT

COMPANY: JONES ENERGY, LLC LEASE: NIGHTINGALE WELL NO. 8-11HX
 SECTION 17 TOWNSHIP 20-N RANGE 26-WM LOCATION 2440' FNL 500' FEL
 COUNTY ELIS STATE OKLAHOMA TOPOGRAPHY AND VEGETATION EXISTING PAD
 LATITUDE 36°12'36.66" LONGITUDE -99°59'25.42" NAD27 ELEVATION 2343' NGVD29 DATE STAKED 5/2/16
 DIRECTION FROM NEAREST TOWN APPROXIMATELY 7.5 MILES SOUTHWEST OF SHATTUCK, OKLAHOMA



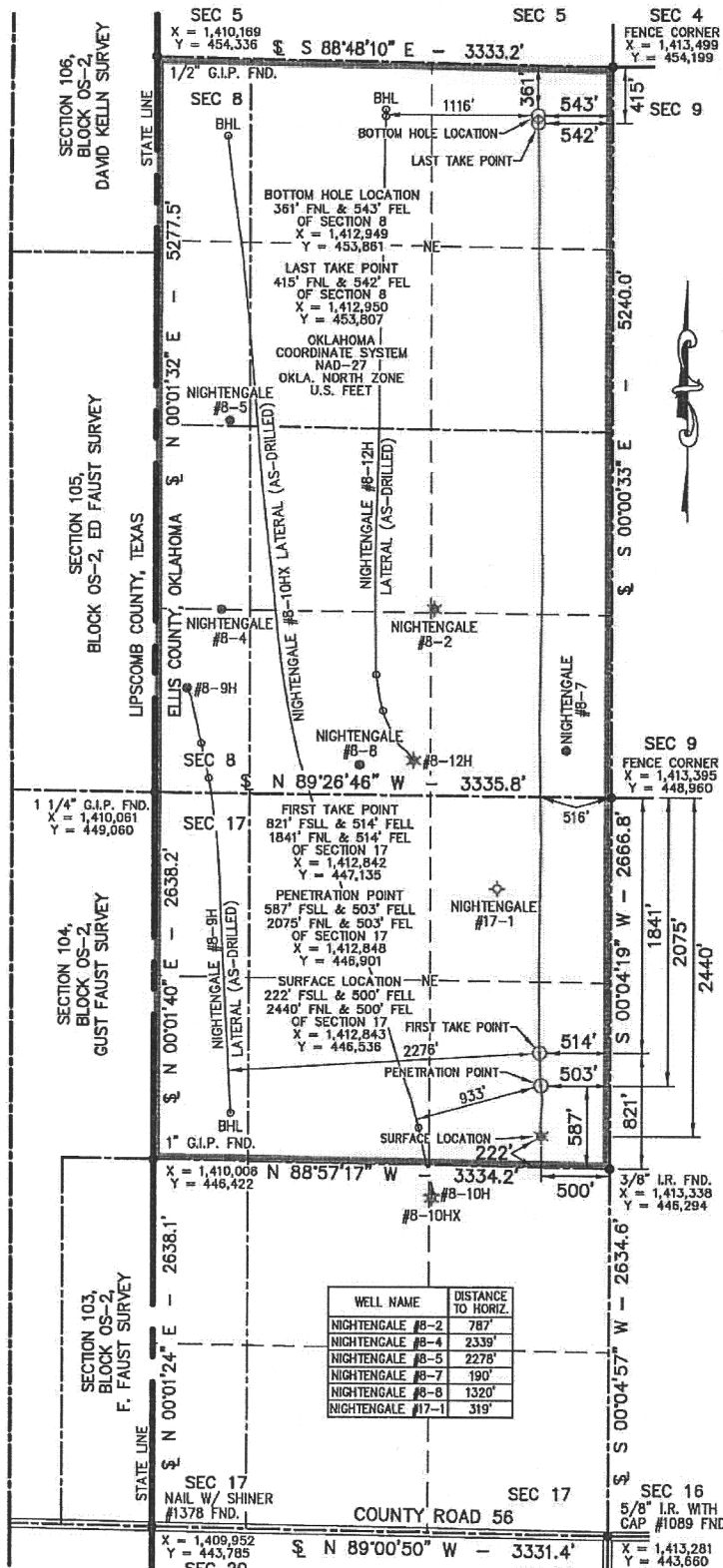
THIS IS TO CERTIFY THAT THE ABOVE PLAT WAS PREPARED FROM FIELD NOTES OF ACTUAL SURVEYS MADE BY MYSELF OR OTHERS UNDER MY SUPERVISION AND THAT THE SAME ARE TRUE AND CORRECT TO THE BEST OF MY KNOWLEDGE AND BELIEF.

SIGNED: _____ DATE: 10/19/16

WELL LEGEND
 ○ PERMITTED
 ○ OIL
 ☆ GAS
 ☆ OIL/GAS
 ☆ PLUGGED OIL
 ☆ PLUGGED GAS
 ☆ PLUGGED OIL/GAS

SEC 528
 SEC 441

SECTION 3, BLOCK JW, JOHN L. WORTHAM SURVEY



WELL NAME	DISTANCE TO HWY
NIGHTINGALE #8-2	787'
NIGHTINGALE #8-4	2339'
NIGHTINGALE #8-5	2278'
NIGHTINGALE #8-7	190'
NIGHTINGALE #8-8	1320'
NIGHTINGALE #17-1	319'

Scale 1" = 1000'

- NOTE:**
- This plat is intended for Oklahoma Corporation Commission Permit purposes only and is NOT to be relied upon as a boundary survey and is NOT to be used to convey or establish real property interests.
 - Bearings and dimensions shown are based on Geodetic Azimuth and Ground distances. All XY coordinates are based on NAD27, Oklahoma North Zone, U.S. Feet.
 - XY Coordinates were derived from GPS RTK methods and are only accurate within +/- 10 feet.
 - As-drilled data shown on this plat was provided by client and/or third party. Information was not nor has not been field verified by Surveyor.

APEX
 SURVEYING & MAPPING, INC.
 TEXAS • OKLAHOMA • KANSAS
 105 HACKBERRY TRAIL
 CANTABRIA, TEXAS 77014
 808-323-9773



FIELD: N/A
 DRAWN: CM
 DATE: 10/19/16
 CHECKED: MLS
 REVISION:

JOB NO. C216-051-5

Certificate of Authorization No. 3418, Exp. June 30, 2018

807 LAS CHAAS PARKWAY • SUITE 300 • AUSTIN, TEXAS 78748