

Oklahoma Corporation Commission
Oil & Gas Conservation Division
Post Office Box 52000
Oklahoma City, Oklahoma 73152-2000
Rule 165: 10-3-25

Form 1002A

API No.: 35045236070000

Completion Report

Spud Date: May 29, 2016

OTC Prod. Unit No.: 04521764400000

Drilling Finished Date: June 11, 2016

1st Prod Date: June 30, 2016

Completion Date: June 14, 2016

Drill Type: HORIZONTAL HOLE

Well Name: BAYLESS 26 2H

Purchaser/Measurer: ETC FIELD SERVICES

Location: ELLIS 26 20N 24W
SE SE SW SE
280 FSL 1600 FEL of 1/4 SEC
Derrick Elevation: 2481 Ground Elevation: 2462

First Sales Date: 06-30-2016

Operator: JONES ENERGY LLC 21043

807 LAS CIMAS PKWY STE 350
AUSTIN, TX 78746-6193

Completion Type	
X	Single Zone
	Multiple Zone
	Commingled

Location Exception	
Order No	
654294	

Increased Density	
Order No	
656796	

Casing and Cement							
Type	Size	Weight	Grade	Feet	PSI	SAX	Top of CMT
SURFACE	9.625	36	J55	746		450	SURFACE
INTERMEDIATE	7	26	P110	8990		420	3742

Liner								
Type	Size	Weight	Grade	Length	PSI	SAX	Top Depth	Bottom Depth
LINER	4.5	13.5	P110	4094	0	0	8799	

Total Depth: 12895

Packer	
Depth	Brand & Type
There are no Packer records to display.	

Plug	
Depth	Plug Type
There are no Plug records to display.	

Initial Test Data										
Test Date	Formation	Oil BBL/Day	Oil-Gravity (API)	Gas MCF/Day	Gas-Oil Ratio Cu FT/BBL	Water BBL/Day	Pumpin or Flowing	Initial Shut-In Pressure	Choke Size	Flow Tubing Pressure
Jul 20, 2016	CLEVELAND	26	44.5	87	3346	643	FLOWING	660	34/64	300

Completion and Test Data by Producing Formation										
Formation Name: CLEVELAND			Code: 405CLVD			Class: OIL				
Spacing Orders				Perforated Intervals						
Order No	Unit Size			From			To			
101239	640			There are no Perf. Intervals records to display.						
Acid Volumes				Fracture Treatments						
There are no Acid Volume records to display.				50136 BBLs FLUID, 2255960 LBS PROPPANT.						

Formation	Top
CLEVELAND	8550

Were open hole logs run? No

Date last log run:

Were unusual drilling circumstances encountered? No

Explanation:

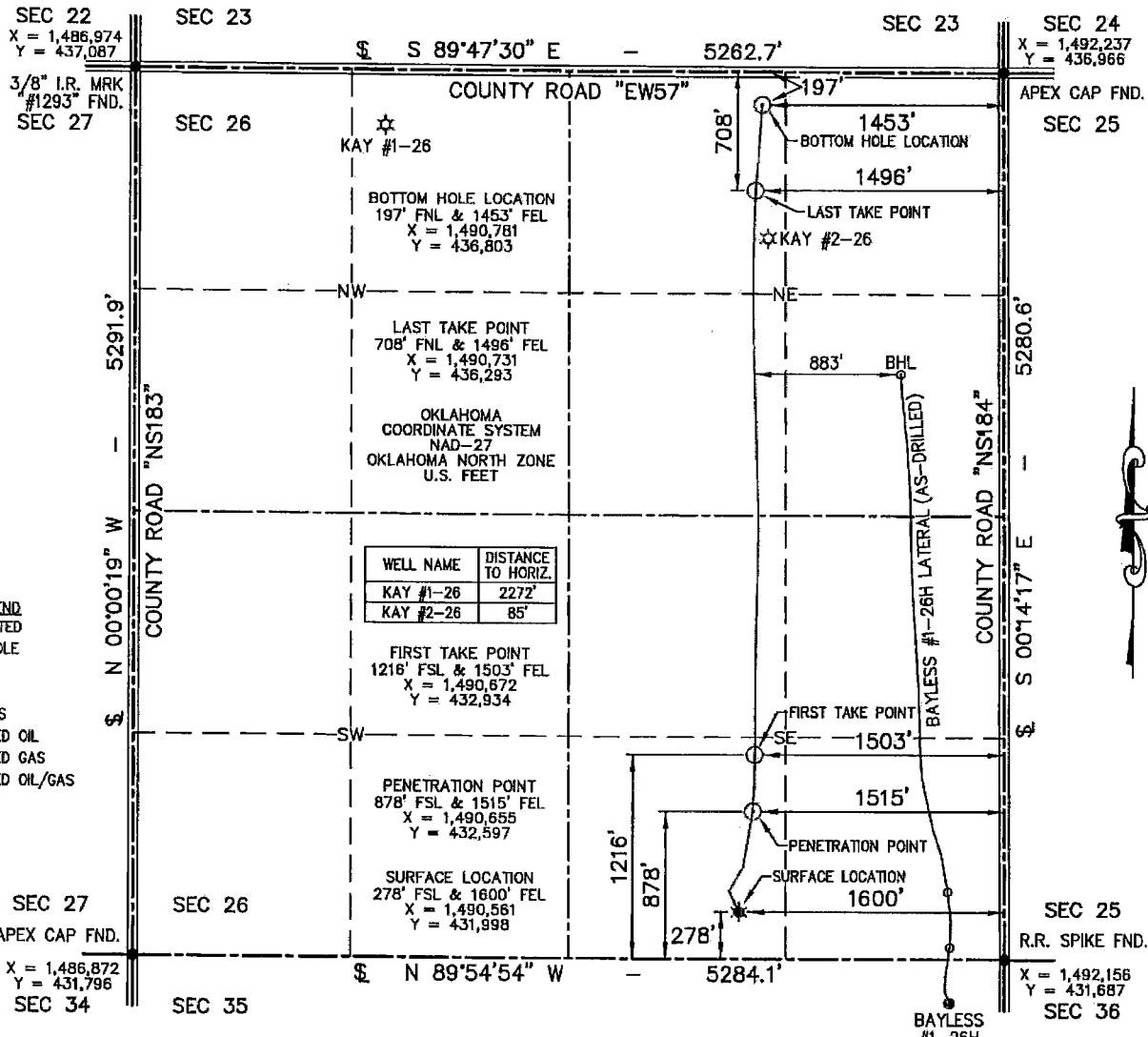
Other Remarks
OPEN HOLE COMPLETION FROM 8990' TO TOTAL DEPTH OF 12895'. IRREGULAR SECTION.

Lateral Holes
Sec: 26 TWP: 20N RGE: 24W County: ELLIS
NE NE NW NE
197 FNL 1453 FEL of 1/4 SEC
Depth of Deviation: 7889 Radius of Turn: 650 Direction: 1 Total Length: 3905
Measured Total Depth: 12895 True Vertical Depth: 8460 End Pt. Location From Release, Unit or Property Line: 197

FOR COMMISSION USE ONLY
Status: Accepted
1134733

"AS-DRILLED" WELL LOCATION PLAT

COMPANY JONES ENERGY, LLC LEASE BAYLESS 26 WELL NO. 2H
 SECTION 26 TOWNSHIP 20-N RANGE 24-WM LOCATION 278' FSL 1800' FEL
 COUNTY ELLIS STATE OKLAHOMA TOPOGRAPHY AND VEGETATION EXISTING PAD
 LATITUDE 36°10'27.62" LONGITUDE -99°43'34.04" NAD27 ELEVATION 2469' NGVD29 DATE STAKED N/A
 DIRECTION FROM NEAREST TOWN APPROXIMATELY 6.0 MILES NORTHEAST OF ARNETT, OKLAHOMA



NOTE:

- This plat is intended for Oklahoma Corporation Commission Permit purposes only and is NOT to be relied upon as a boundary survey and is NOT to be used to convey or establish real property interests.
- Bearings and dimensions shown are based on Geodetic Azimuth and Ground distance. All X,Y coordinates are based on NAD27, Oklahoma North Zone, U.S. Feet.
- X,Y Coordinates were derived from GPS RTK methods and are only accurate within +/- 10 feet.
- As-drilled data shown on this plat was provided by client and /or third party. Information was not nor has not been field verified by Surveyor.

Scale 1" = 1000'

-1000 -500 0 1000

THIS IS TO CERTIFY THAT THE ABOVE PLAT WAS PREPARED FROM FIELD NOTES OF ACTUAL SURVEYS MADE BY MYSELF OR OTHERS UNDER MY SUPERVISION AND THAT THE SAME ARE TRUE AND CORRECT TO THE BEST OF MY KNOWLEDGE AND BELIEF.

SIGNED: DATED: 10/18/16



APEX
 SURVEYING & MAPPING, INC.
 TEXAS • OKLAHOMA • KANSAS
 105 HACKBERRY TRAIL
 CANADIAN, TEXAS 79014
 806-323-9773

JONES

FIELD:	N/A
DRAWN:	CM
DATE:	10/18/16
CHECKED:	MLS
REVISION:	

807 LAS CHIAS PARKWAY • SUITE 350 • AUSTIN, TEXAS 78748

JOB NO. | C216-161-1

Certificate of Authorization No. 3415, Exp. June 30, 2018