

Oklahoma Corporation Commission
Oil & Gas Conservation Division
Post Office Box 52000
Oklahoma City, Oklahoma 73152-2000
Rule 165: 10-3-25

Form 1002A

API No.: 35045236130000

Completion Report

Spud Date: June 19, 2016

OTC Prod. Unit No.: 04521784900000

Drilling Finished Date: June 29, 2016

1st Prod Date: August 02, 2016

Completion Date: July 02, 2016

Drill Type: HORIZONTAL HOLE

Well Name: BAY 15 5H

Purchaser/Measurer: ETC FIELD SERVICES

Location: ELLIS 10 20N 26W
SW SE SW SE
295 FSL 1875 FEL of 1/4 SEC
Derrick Elevation: 2458 Ground Elevation: 2439

First Sales Date: 08-02-2016

Operator: JONES ENERGY LLC 21043

807 LAS CIMAS PKWY STE 350
AUSTIN, TX 78746-6193

Completion Type	
X	Single Zone
	Multiple Zone
	Commingled

Location Exception	
Order No	
654078	
654809	

Increased Density	
Order No	
656411	

Casing and Cement							
Type	Size	Weight	Grade	Feet	PSI	SAX	Top of CMT
SURFACE	9.265	36	J55	845		505	SURFACE
INTERMEDIATE	7	26	P110	8516		405	3742

Liner								
Type	Size	Weight	Grade	Length	PSI	SAX	Top Depth	Bottom Depth
LINER	4.5	14	P110	6186	0	0	6882	13068

Total Depth: 13188

Packer	
Depth	Brand & Type
There are no Packer records to display.	

Plug	
Depth	Plug Type
There are no Plug records to display.	

Initial Test Data										
Test Date	Formation	Oil BBL/Day	Oil-Gravity (API)	Gas MCF/Day	Gas-Oil Ratio Cu FT/BBL	Water BBL/Day	Pumpin or Flowing	Initial Shut-In Pressure	Choke Size	Flow Tubing Pressure
Aug 04, 2016	CLEVELAND	56	44.5	221	3946	140	FLOWING	760	1-64	150

Completion and Test Data by Producing Formation									
Formation Name: CLEVELAND				Code: 405CLVD			Class: OIL		
Spacing Orders				Perforated Intervals					
Order No		Unit Size		From			To		
555427		640		8629			13158		
Acid Volumes				Fracture Treatments					
There are no Acid Volume records to display.				58185 BBLS FLUID 2459576 LBS PROPPANT					

Formation	Top
CLEVELAND	8183

Were open hole logs run? No

Date last log run:

Were unusual drilling circumstances encountered? No

Explanation:

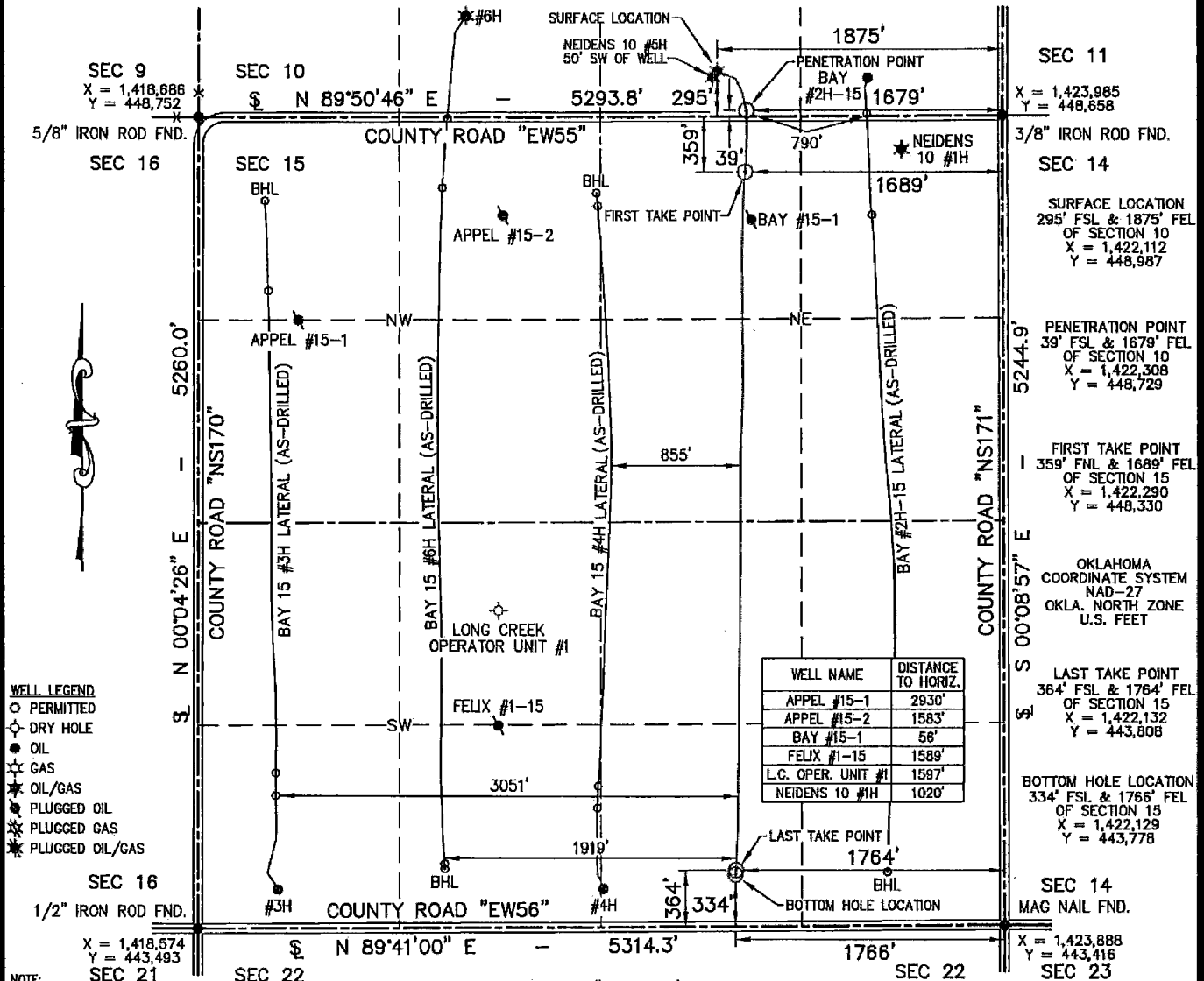
Other Remarks
OCC: FLE ORDER HAS NOT BEEN ISSUED. WE HAVE ACCEPTED OPERATORS DATA AS SUBMITTED. IRREGULAR SECTION.

Lateral Holes
Sec: 15 TWP: 20N RGE: 26W County: ELLIS
NW SE SW SE
334 FSL 1766 FEL of 1/4 SEC
Depth of Deviation: 7200 Radius of Turn: 650 Direction: 180 Total Length: 4609
Measured Total Depth: 13188 True Vertical Depth: 8214 End Pt. Location From Release, Unit or Property Line: 334

FOR COMMISSION USE ONLY
Status: Accepted
1134740

"AS-DRILLED" WELL LOCATION PLAT

COMPANY JONES ENERGY, LLC LEASE BAY 15 WELL NO. 5H
 SECTION 10 TOWNSHIP 20-N RANGE 26-WIM LOCATION 295' FSL 1875' FEL
 COUNTY ELLIS STATE OKLAHOMA TOPOGRAPHY AND VEGETATION EXISTING PAD
 LATITUDE 36°13'02.76" LONGITUDE -99°57'32.93" NAD27 ELEVATION 2439' NGVD29 DATE STAKED 5/2/16
 DIRECTION FROM NEAREST TOWN APPROXIMATELY 6.0 MILES SOUTHWEST OF SHATTUCK, OKLAHOMA



WELL LEGEND
 ○ PERMITTED
 ◇ DRY HOLE
 ● OIL
 ☆ GAS
 ★ OIL/GAS
 ✱ PLUGGED OIL
 ✱ PLUGGED GAS
 ✱ PLUGGED OIL/GAS

NOTE:

- This plat is intended for Oklahoma Corporation Commission Permit purposes only and is NOT to be relied upon as a boundary survey and is NOT to be used to convey or establish real property interests.
- Bearings and dimensions shown are based on Geodetic Azimuth and Ground distance. All X,Y coordinates are based on NAD27, Oklahoma North Zone, U.S. Feet.
- X,Y Coordinates were derived from GPS RTK methods and are only accurate within +/- 10 feet.
- As-drilled data shown on this plat was provided by client and /or third party. Information was not nor has not been field verified by Surveyor.

THIS IS TO CERTIFY THAT THE ABOVE PLAT WAS PREPARED FROM FIELD NOTES OF ACTUAL SURVEYS MADE BY MYSELF OR OTHERS UNDER MY SUPERVISION AND THAT THE SAME ARE TRUE AND CORRECT TO THE BEST OF MY KNOWLEDGE AND BELIEF.

SIGNED: _____

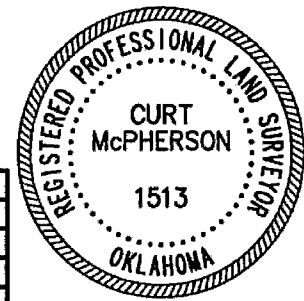
DATED: 10/19/16

APEX
 SURVEYING & MAPPING, INC.
 TEXAS • OKLAHOMA • KANSAS
 105 HACKBERRY TRAIL
 CANADIAN, TEXAS 79014
 806-323-9773



JONES
 807 LAS CIMAS PARKWAY • SUITE 350 • AUSTIN, TEXAS 78746

FIELD:	N/A
DRAWN:	CM
DATE:	10/19/16
CHECKED:	MLS
REVISION:	



Certificate of Authorization No. 3415, Exp. June 30, 2018

JOB NO. C216-053-5