

Oklahoma Corporation Commission  
Oil & Gas Conservation Division  
Post Office Box 52000  
Oklahoma City, Oklahoma 73152-2000  
Rule 165: 10-3-25

Form 1002A

API No.: 35045236120000

**Completion Report**

Spud Date: June 18, 2016

OTC Prod. Unit No.: 04521785000000

Drilling Finished Date: July 01, 2016

1st Prod Date: August 04, 2016

Completion Date: July 03, 2016

**Drill Type: HORIZONTAL HOLE**

Well Name: BAY 15 6H

Purchaser/Measurer: ETC FIELD SERVICES

Location: ELLIS 10 20N 26W  
NE SW SE SW  
656 FSL 1760 FWL of 1/4 SEC  
Derrick Elevation: 2450 Ground Elevation: 2431

First Sales Date: 08-14-2016

Operator: JONES ENERGY LLC 21043

807 LAS CIMAS PKWY STE 350  
AUSTIN, TX 78746-6193

Completion Type		Location Exception		Increased Density	
X	Single Zone	Order No		Order No	
	Multiple Zone	654079		656411	
	Commingled	655447			

Casing and Cement							
Type	Size	Weight	Grade	Feet	PSI	SAX	Top of CMT
SURFACE	9.625	36	J55	803		505	SURFACE
INTERMEDIATE	7	26	P110	8886		405	2553

Liner								
Type	Size	Weight	Grade	Length	PSI	SAX	Top Depth	Bottom Depth
LINER	4.5	14	P110	4664	0	0	8679	13343

**Total Depth: 13345**

Packer	
Depth	Brand & Type
There are no Packer records to display.	

Plug	
Depth	Plug Type
There are no Plug records to display.	

Initial Test Data										
Test Date	Formation	Oil BBL/Day	Oil-Gravity (API)	Gas MCF/Day	Gas-Oil Ratio Cu FT/BBL	Water BBL/Day	Pumpin or Flowing	Initial Shut-In Pressure	Choke Size	Flow Tubing Pressure
Aug 17, 2016	CLEVELAND	148	44.7	23	155	168	FLOWING	900	1-64	175

Completion and Test Data by Producing Formation														
Formation Name: CLEVELAND	Code: 405CLVD	Class: OIL												
<table border="1" style="width: 100%;"> <tr> <th colspan="2">Spacing Orders</th> </tr> <tr> <th>Order No</th> <th>Unit Size</th> </tr> <tr> <td>555427</td> <td>640</td> </tr> </table>		Spacing Orders		Order No	Unit Size	555427	640	<table border="1" style="width: 100%;"> <tr> <th colspan="2">Perforated Intervals</th> </tr> <tr> <th>From</th> <th>To</th> </tr> <tr> <td>8907</td> <td>13324</td> </tr> </table>	Perforated Intervals		From	To	8907	13324
Spacing Orders														
Order No	Unit Size													
555427	640													
Perforated Intervals														
From	To													
8907	13324													
<table border="1" style="width: 100%;"> <tr> <th>Acid Volumes</th> </tr> <tr> <td>There are no Acid Volume records to display.</td> </tr> </table>		Acid Volumes	There are no Acid Volume records to display.	<table border="1" style="width: 100%;"> <tr> <th>Fracture Treatments</th> </tr> <tr> <td>56039 BBLS FLUID 2486980 LBS PROPPANT</td> </tr> </table>	Fracture Treatments	56039 BBLS FLUID 2486980 LBS PROPPANT								
Acid Volumes														
There are no Acid Volume records to display.														
Fracture Treatments														
56039 BBLS FLUID 2486980 LBS PROPPANT														

Formation	Top
CLEVELAND	8175

Were open hole logs run? No

Date last log run:

Were unusual drilling circumstances encountered? No

Explanation:

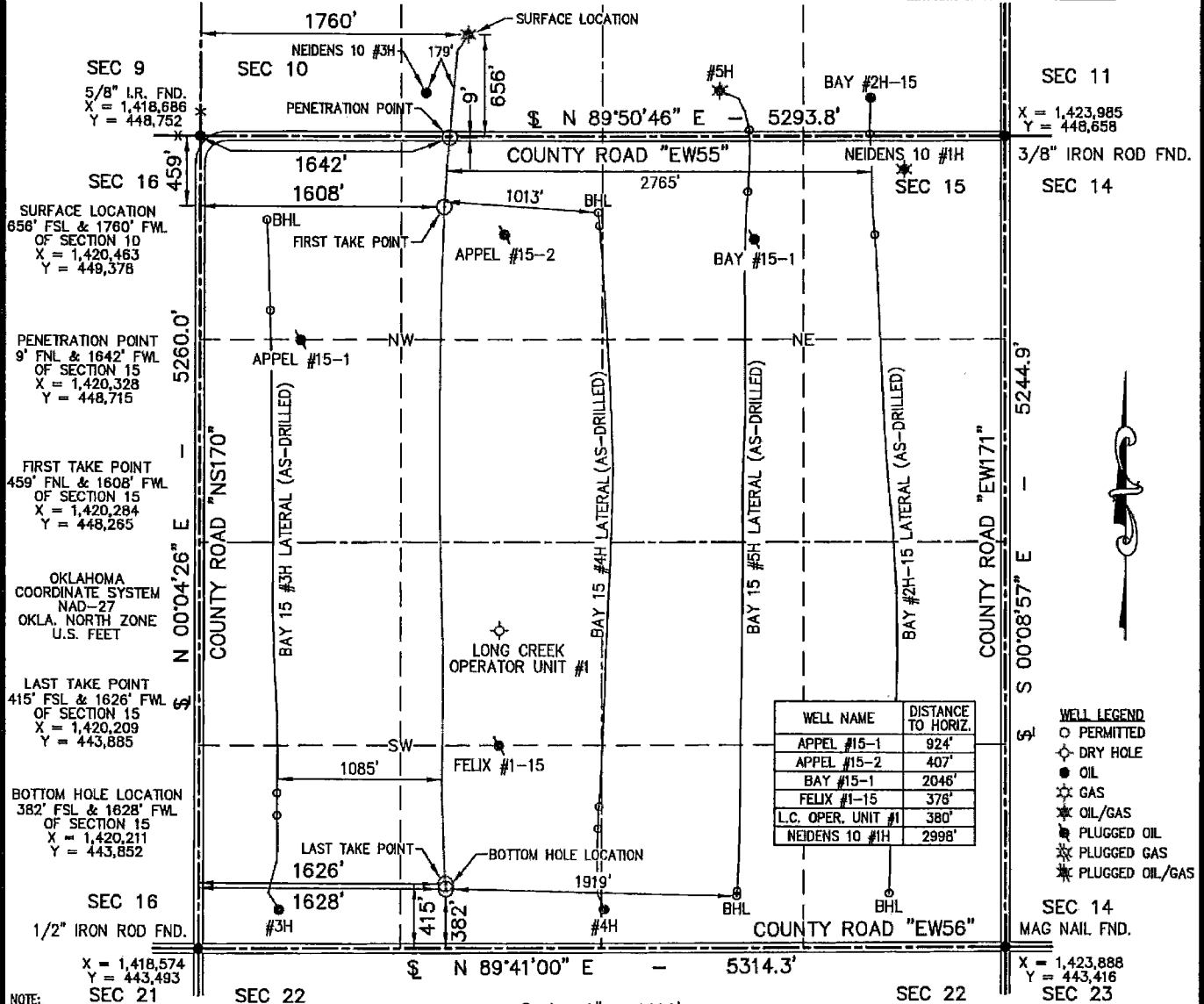
Other Remarks
OCC: FLE ORDER HAS NOT BEEN ISSUED. WE HAVE ACCEPTED OPERATORS DATA AS SUBMITTED. IRREGULAR SECTION.

Lateral Holes
<p>Sec: 15 TWP: 20N RGE: 26W County: ELLIS</p> <p>NW SW SE SW</p> <p>382 FSL 1628 FWL of 1/4 SEC</p> <p>Depth of Deviation: 7247 Radius of Turn: 650 Direction: 180 Total Length: 4470</p> <p>Measured Total Depth: 13345 True Vertical Depth: 8192 End Pt. Location From Release, Unit or Property Line: 382</p>

FOR COMMISSION USE ONLY	
Status: Accepted	1134764

# "AS-DRILLED" WELL LOCATION PLAT

COMPANY JONES ENERGY, LLC LEASE BAY 15 WELL NO. 6H  
 SECTION 10 TOWNSHIP 20-N RANGE 26-WIM LOCATION 656' FSL 1760' FWL  
 COUNTY ELLIS STATE OKLAHOMA TOPOGRAPHY AND VEGETATION EXISTING PAD  
 LATITUDE 36°13'06.29" LONGITUDE -99°57'53.15" NAD27 ELEVATION 2431' NGVD29 DATE STAKED 5/13/16  
 DIRECTION FROM NEAREST TOWN APPROXIMATELY 6.0 MILES SOUTHWEST OF SHATTUCK, OKLAHOMA



**APEX**  
 SURVEYING & MAPPING, INC.  
 TEXAS • OKLAHOMA • KANSAS  
 105 HACKBERRY TRAIL  
 CANADIAN, TEXAS 79014  
 806-323-9773



**JONES**

FIELD: N/A  
 DRAWN: CM  
 DATE: 10/19/16  
 CHECKED: MLS  
 REVISION:



Certificate of Authorization No. 3415, Exp. June 30, 2018

807 LAS CIMAS PARKWAY • SUITE 350 • AUSTIN, TEXAS 78748

JOB NO. C216-054-5.1