

Oklahoma Corporation Commission
Oil & Gas Conservation Division
Post Office Box 52000
Oklahoma City, Oklahoma 73152-2000
Rule 165: 10-3-25

Form 1002A

API No.: 35087217990002

Completion Report

Spud Date: April 29, 2008

OTC Prod. Unit No.:

Drilling Finished Date: May 26, 2008

Amended

1st Prod Date:

Amend Reason: RECOMPLETE

Completion Date: July 05, 2008

Recomplete Date: September 01, 2016

Drill Type: DIRECTIONAL HOLE

Well Name: ROY 1

Purchaser/Measurer:

Location: MCCLAIN 25 8N 4W
SW NW SW NE
882 FSL 154 FWL of 1/4 SEC
Derrick Elevation: 1171 Ground Elevation: 1156

First Sales Date:

Operator: GLB EXPLORATION INC 18634

7716 MELROSE LN
OKLAHOMA CITY, OK 73127-6002

Completion Type	
X	Single Zone
	Multiple Zone
	Commingled

Location Exception	
Order No	
654877	

Increased Density	
Order No	
There are no Increased Density records to display.	

Casing and Cement							
Type	Size	Weight	Grade	Feet	PSI	SAX	Top of CMT
CONDUCTOR	16	36	J-55	70	500	200	SURFACE
SURFACE	8 5/8	23	J-55	643	1000	375	SURFACE
PRODUCTION	5 1/2	17	N-80	10666	2400	435	8320

Liner								
Type	Size	Weight	Grade	Length	PSI	SAX	Top Depth	Bottom Depth
There are no Liner records to display.								

Total Depth: 10667

Packer	
Depth	Brand & Type
There are no Packer records to display.	

Plug	
Depth	Plug Type
10055	CIBP

Initial Test Data										
Test Date	Formation	Oil BBL/Day	Oil-Gravity (API)	Gas MCF/Day	Gas-Oil Ratio Cu FT/BBL	Water BBL/Day	Pumpin or Flowing	Initial Shut-In Pressure	Choke Size	Flow Tubing Pressure
Sep 01, 2016	OSBORN		36							

Completion and Test Data by Producing Formation									
Formation Name: OSBORN				Code: 404OSBR			Class: DRY		
Spacing Orders				Perforated Intervals					
Order No		Unit Size		From			To		
246600		80		9038			9068		
Acid Volumes				Fracture Treatments					
3,000 GALLONS DIESEL				There are no Fracture Treatments records to display.					

Formation	Top
OSBORN	6038

Were open hole logs run? No

Date last log run:

Were unusual drilling circumstances encountered? No

Explanation:

Other Remarks
OSBORN SAND WAS DEPLETED FROM OFFSET WELLS.

Bottom Holes
<p>Sec: 25 TWP: 8N RGE: 4W County: MCCLAIN</p> <p>NW NE SE NW</p> <p>1197 FSL 351 FEL of 1/4 SEC</p> <p>Depth of Deviation: 0 Radius of Turn: 0 Direction: 0 Total Length: 0</p> <p>Measured Total Depth: 10667 True Vertical Depth: 10590 End Pt. Location From Release, Unit or Property Line: 351</p>

FOR COMMISSION USE ONLY
<div>Status: Accepted</div> <div>1134745</div>

PLEASE TYPE OR USE BLACK INK ONLY
FORMATION RECORD

Give formation names and tops, if available, or descriptions and thickness of formations drilled through. Show intervals cored or drillstem tested.

NAMES OF FORMATIONS	TOP
OSBORN	6038

LEASE NAME

ROY

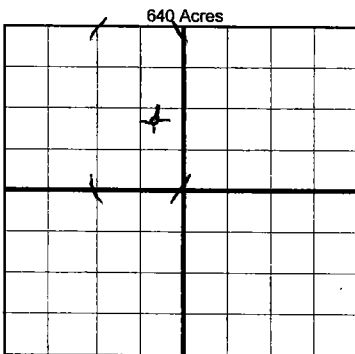
WELL NO. 1

FOR COMMISSION USE ONLY	
ITD on file	<input type="checkbox"/> YES <input type="checkbox"/> NO
APPROVED	DISAPPROVED
2) Reject Codes	

Were open hole logs run?	yes <input type="checkbox"/> no <input checked="" type="checkbox"/>
Date Last log was run	
Was CO ₂ encountered?	yes <input type="checkbox"/> no <input checked="" type="checkbox"/> at what depths?
Was H ₂ S encountered?	yes <input type="checkbox"/> no <input checked="" type="checkbox"/> at what depths?
Were unusual drilling circumstances encountered?	yes <input type="checkbox"/> no <input type="checkbox"/>
If yes, briefly explain below	

Other remarks:

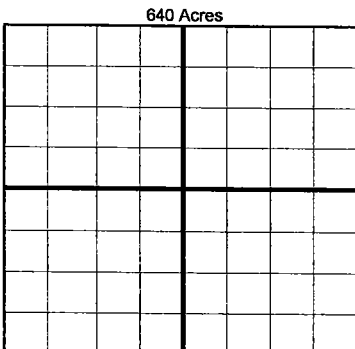
OSBORN SAND WAS DEPLETED FROM OFFSET WELLS.



If more than three drainholes are proposed, attach a separate sheet indicating the necessary information.

Direction must be stated in degrees azimuth. Please note, the horizontal drainhole and its end point must be located within the boundaries of the lease or spacing unit.

Directional surveys are required for all drainholes and directional wells.



BOTTOM HOLE LOCATION FOR DIRECTIONAL HOLE

SEC	TWP	RGE	COUNTY
25	8N	4W	McClain
Spot Location			
NW 1/4	NE 1/4	SE 1/4	SW 1/4
Measured Total Depth		True Vertical Depth	
10667		10590	
Feet From 1/4 Sec Lines		FSL	FWL
		1197	351
BHL From Lease, Unit, or Property Line:			

BOTTOM HOLE LOCATION FOR HORIZONTAL HOLE: (LATERALS)

LATERAL #1

SEC	TWP	RGE	COUNTY
Spot Location			
1/4	1/4	1/4	1/4
Feet From 1/4 Sec Lines		FSL	FWL
Depth of Deviation	Radius of Turn	Direction	Total Length
Measured Total Depth	True Vertical Depth	BHL From Lease, Unit, or Property Line:	

LATERAL #2

SEC	TWP	RGE	COUNTY
Spot Location			
1/4	1/4	1/4	1/4
Feet From 1/4 Sec Lines		FSL	FWL
Depth of Deviation	Radius of Turn	Direction	Total Length
Measured Total Depth	True Vertical Depth	BHL From Lease, Unit, or Property Line:	

LATERAL #3

SEC	TWP	RGE	COUNTY
Spot Location			
1/4	1/4	1/4	1/4
Feet From 1/4 Sec Lines		FSL	FWL
Depth of Deviation	Radius of Turn	Direction	Total Length
Measured Total Depth	True Vertical Depth	BHL From Lease, Unit, or Property Line:	