

Oklahoma Corporation Commission
Oil & Gas Conservation Division
Post Office Box 52000
Oklahoma City, Oklahoma 73152-2000
Rule 165: 10-3-25

Form 1002A

API No.: 35073253490000

Completion Report

Spud Date: August 12, 2016

OTC Prod. Unit No.: 073-217878

Drilling Finished Date: August 21, 2016

1st Prod Date: September 23, 2016

Completion Date: September 09, 2016

Drill Type: HORIZONTAL HOLE

Min Gas Allowable: Yes

Well Name: COPELAND 29-17-6 1H

Purchaser/Measurer: CHESAPEAKE OPERATING LLC

Location: KINGFISHER 29 17N 6W
SE SW SE SW
235 FSL 1880 FWL of 1/4 SEC
Derrick Elevation: 1062 Ground Elevation: 1038

First Sales Date: 09/23/2016

Operator: CHESAPEAKE OPERATING LLC 17441
PO BOX 18496
6100 N WESTERN AVE
OKLAHOMA CITY, OK 73154-0496

Completion Type		Location Exception		Increased Density	
X	Single Zone	Order No		Order No	
	Multiple Zone	653487		There are no Increased Density records to display.	
	Commingled				

Casing and Cement								
Type		Size	Weight	Grade	Feet	PSI	SAX	Top of CMT
SURFACE		9 5/8	36	J-55	1496		610	SURFACE
PRODUCTION		7	26	P-110	6946		269	4373

Liner								
Type	Size	Weight	Grade	Length	PSI	SAX	Top Depth	Bottom Depth
LINER	4 1/2	11.6	P-110EC	4740	0	426	6696	11436

Total Depth: 11438

Packer		Plug	
Depth	Brand & Type	Depth	Plug Type
There are no Packer records to display.		11305	CIBP

Initial Test Data										
Test Date	Formation	Oil BBL/Day	Oil-Gravity (API)	Gas MCF/Day	Gas-Oil Ratio Cu FT/BBL	Water BBL/Day	Pumpin or Flowing	Initial Shut-In Pressure	Choke Size	Flow Tubing Pressure
Sep 25, 2016	OSWEGO	383		452	1180	1562	ARTIFICIA			289

Completion and Test Data by Producing Formation										
Formation Name: OSWEGO			Code: 404OSWG			Class: OIL				
Spacing Orders				Perforated Intervals						
Order No		Unit Size		From			To			
644881		640		6956			11290			
Acid Volumes				Fracture Treatments						
871,200 GALLONS HCL ACID				23,876 BARRELS FRAC FLUID, NO PROPPANT						

Formation	Top
OSWEGO	6823

Were open hole logs run? No

Date last log run:

Were unusual drilling circumstances encountered? No

Explanation:

Other Remarks
OCC - THIS DOCUMENT IS ACCEPTED BASED ON THE DATA SUBMITTED THE FINAL LOCATION EXCEPTION HAS NOT BEEN SUBMITTED.

Lateral Holes
Sec: 29 TWP: 17N RGE: 6W County: KINGFISHER NW NW NE NW 239 FNL 1350 FWL of 1/4 SEC Depth of Deviation: 6254 Radius of Turn: 372 Direction: 2 Total Length: 4615 Measured Total Depth: 11438 True Vertical Depth: 6626 End Pt. Location From Release, Unit or Property Line: 239

FOR COMMISSION USE ONLY	
Status: Accepted	1134743

API
NO. 35-073-25349
OTC PROD.
UNIT NO. 073-217878

PLEASE TYPE OR USE BLACK INK ONLY

NOTE:

Attach copy of original 1002A if recompletion or reentry.

OKLAHOMA CORPORATION COMMISSION

Oil & Gas Conservation Division

Post Office Box 52000

Oklahoma City, Oklahoma 73152-2000

Rule 165:10-3-25

RECEIVED
656951

Form 1002A

Rev 2009

OCT 21 2016

☒ ORIGINAL
☐ AMENDED
Reason Amended

TYPE OF DRILLING OPERATION

☐ STRAIGHT HOLE ☐ DIRECTIONAL HOLE ☒ HORIZONTAL HOLE
If directional or horizontal, see reverse for bottom hole location.

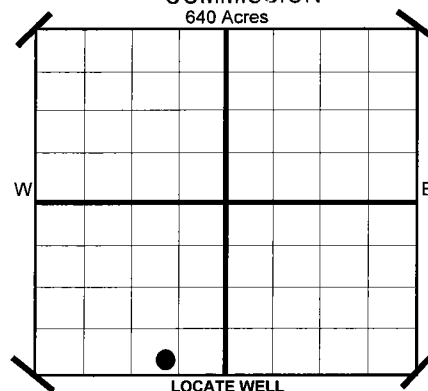
COUNTY	KINGFISHER	SEC	29	TWP	17N	RGE	6W
LEASE NAME	COPELAND 29-17-6		WELL NO	1H		DATE OF WELL COMPLETION	9/9/2016
SHL	SE 1/4 SW 1/4 SE 1/4 SW 1/4	FSL	235	FWL OF 1/4 SEC	1,880	1ST PROD DATE	9/23/2016
ELEVATION	Derrick Fl 1,062 Ground 1,038		Latitude (if Known)			RECOMP DATE	
OPERATOR NAME	CHESAPEAKE OPERATING, L.L.C.			OTC/OCC OPERATOR NO.	17441		
ADDRESS	P.O. BOX 18496						
CITY	OKLAHOMA CITY		STATE	OK		ZIP	73154

COMPLETION REPORT

SPUD DATE	8/12/2016
DRLG FINISHED DATE	8/21/2016
DATE OF WELL COMPLETION	9/9/2016
1ST PROD DATE	9/23/2016
RECOMP DATE	
Longitude (if Known)	

OKLAHOMA CORPORATION COMMISSION

640 Acres



COMPLETION TYPE

<input checked="" type="checkbox"/> SINGLE ZONE	
<input type="checkbox"/> MULTIPLE ZONE	
Application Date	
<input type="checkbox"/> COMMINGLED	
Application Date	
LOCATION EXCEPTION ORDER NO.	653487 (INTERIM)
INCREASED DENSITY ORDER NO.	N/A

CASING & CEMENT (Form 1002C must be attached)

TYPE	SIZE	WEIGHT	GRADE	FEET	PSI	SAX	TOP
CONDUCTOR							
SURFACE	9 5/8"	36#	J-55	1,496		610	SURFACE
INTERMEDIATE							
PRODUCTION	7"	26#	P-110	6,946		269	4,373
LINER	4 1/2"	11.6#	P-110EC	6,696-11,436		426	6,696
				TOTAL DEPTH	11,438		

PACKER @ N/A BRAND & TYPE
PACKER @ BRAND & TYPE

PLUG @ TYPE PLUG @ 11,305 TYPE CIBP
PLUG @ TYPE PLUG @ TYPE

COMPLETION & TEST DATA BY PRODUCING FORMATION

FORMATION	OSWEGO						
SPACING & SPACING	640						
ORDER NUMBER	644881						
CLASS: Oil, Gas, Dry, Inj.							
Disp, Comm Disp, Svc	OIL						
PERFORATED INTERVALS	6,956-11,290						
ACID/VOLUME	HCL Acid 871,200 GALS						
FRACTURE TREATMENT (Fluids/Prop Amounts)	Frac Fluid 23,876 BBLs No Proppant						

Minimum Gas Allowable

(165:10-17-7)

Gas Purchaser/Measurer

Chesapeake Operating, L.L.C.

☒

OR

1st Sales Date

9/23/2016

INITIAL TEST DATA

Oil Allowable

(165:10-13-3)

INITIAL TEST DATE	9/25/2016						
OIL-BBL/DAY	383						
OIL-GRAVITY (API)							
GAS-MCF/DAY	452						
GAS-OIL RATIO CU FT/BBL	1,180						
WATER-BBL/DAY	1562						
PUMPING OR FLOWING	ARTIFICIAL LIFT						
INITIAL SHUT-IN PRESSURE							
CHOKE SIZE							
FLOW TUBING PRESSURE	289						

AS SUBMITTED

A record of the formations drilled through, and pertinent remarks are presented on the reverse. I declare that I have knowledge of the contents of this report and am authorized by my organization to make this report, which was prepared by me or under my supervision and direction, with the data and facts stated herein to be true, correct, and complete to the best of my knowledge and belief.

SIGNATURE	JP Powell, Sr. Regulatory Analyst	DATE	10/13/2016	PHONE NUMBER	405-848-8000
P.O. BOX 18496	OKLAHOMA CITY	OK	73154	EMAIL ADDRESS	jp.powell@chk.com
ADDRESS	CITY	STATE	ZIP		

Give formation names and tops, if available, or descriptions and thickness of formations drilled through. Show intervals cored or drillstem tested.

WELL NO. 1H

NAMES OF FORMATIONS	TOP
OSWEGO	6,823

FOR COMMISSION USE ONLY	
ITD on file <input type="checkbox"/> YES <input type="checkbox"/> NO	
APPROVED DISAPPROVED	2) Reject Codes

Were open hole logs run?	_____ yes	<u>X</u> no
Date Last log was run	N/A	
Was CO ₂ encountered?	_____ yes	<u>X</u> no at what depths?
Was H ₂ S encountered?	_____ yes	<u>X</u> no at what depths?
Were unusual drilling circumstances encountered?	_____ yes	<u>X</u> no
If yes, briefly explain.		

Other remarks:

640 Acres

If more than three drainholes are proposed, attach a separate sheet indicating the necessary information.

Direction must be stated in degrees azimuth.
Please note, the horizontal drainhole and its end point must be located within the boundaries of the lease or spacing unit.

Directional surveys are required for all drainholes and directional wells.
640 Acres

SEC	TWP	RGE	COUNTY
Spot Location	1/4	1/4	1/4
Measured Total Depth	True Vertical Depth	Feet From 1/4 Sec Lines	FSL
		FWL	
BHL From Lease, Unit, or Property Line:			

LATERAL #1		SEC 29		TWP 17N	RGE 6W	COUNTY KINGFISHER	
Spot Location		NW 1/4		NE 1/4	NW 1/4	Feet From 1/4 Sec Lines	FNL 239
Depth of Deviation		6,254		Radius of Turn	372	Direction 2	FWL 1,350
Measured Total Depth		11,438		True Vertical Depth	6,626	Total Length 4,615	
						BHL From Lease, Unit, or Property Line:	
						239	

SEC	TWP	RGE	COUNTY			
Spot Location				Feet From 1/4 Sec Lines	FSL	FWL
1/4	1/4	1/4	1/4			
Depth of Deviation		Radius of Turn		Direction	Total Length	
Measured Total Depth		True Vertical Depth		BHL From Lease, Unit, or Property Line:		

SEC	TWP	RGE	COUNTY			
Spot Location				Feet From 1/4 Sec Lines	FSL	FWL
1/4	1/4	1/4	1/4			
Depth of Deviation		Radius of Turn		Direction	Total Length	
Measured Total Depth		True Vertical Depth		BHL From Lease, Unit, or Property Line:		

TOPOGRAPHIC LAND SURVEYORS OF OKLAHOMA

6709 NORTH CLASSEN BLVD., OKLA. CITY, OKLA. 73116 * LOCAL (405) 843-4847 * OUT OF STATE (800) 654-3219

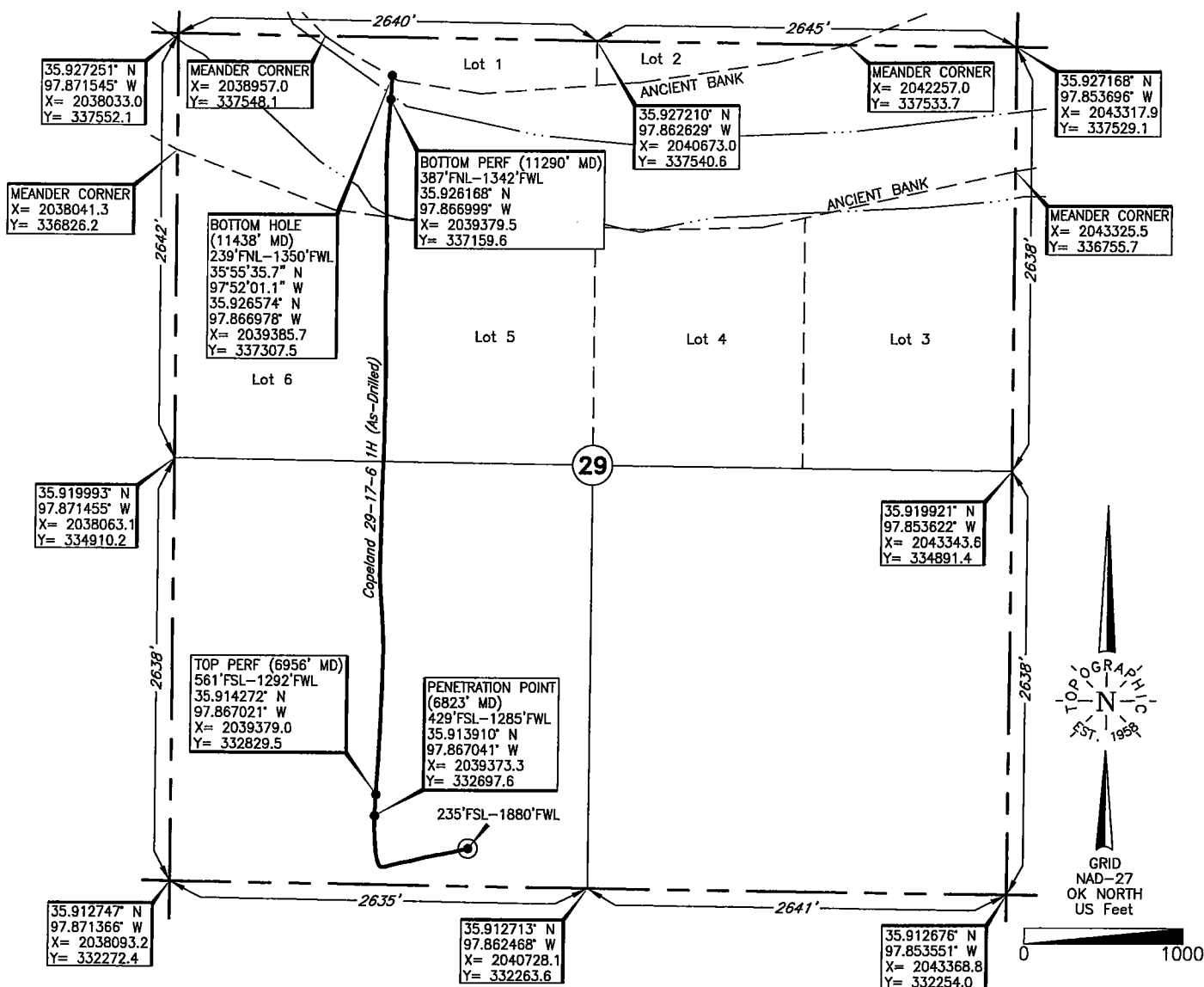
Certificate of Authorization No. 1293 LS

KINGFISHER

County, Oklahoma

REVISION "A"
10-05-2016

235'FSL - 1880'FWL Section 29 Township 17N Range 6W I.M.



Operator: CHESAPEAKE OPERATING, L.L.C.

Lease Name: COPELAND 29-17-6

Well No.: 1H

ELEVATION:

1038' Gr. at Level Pad

Topography & Vegetation Loc. fell on level pad

Good Drill Site? Yes

Reference Stakes or Alternate Location

Stakes Set None

Best Accessibility to Location From South off county road

Distance & Direction

from Hwy Jct or Town From Jct. US Hwy. 81 N-S and St. Hwy 33 S-E and St. Hwy. 3 S-W, in Kingfisher, OK,

go ±3.7 mi. North on US Hwy. 81, then ±3.5 mi. East on paved road to the SW Cor. of Sec. 29-T17N-R6W

DATUM: NAD-27
LAT: 35°54'48.1"N
LONG: 97°51'54.1"W
LAT: 35.913368° N
LONG: 97.865024° W
STATE PLANE
COORDINATES: (US Feet)
ZONE: OK NORTH
X: 2039970.7
Y: 332501.2

265760 Date of Drawing: Sep. 21, 2016
Invoice # 261539 Date Staked: Jun. 13, 2016 JP

FINAL AS-DRILLED PLAT

AS-DRILLED INFORMATION
FURNISHED BY CHESAPEAKE OPERATING, L.L.C.