

Oklahoma Corporation Commission  
Oil & Gas Conservation Division  
Post Office Box 52000  
Oklahoma City, Oklahoma 73152-2000  
Rule 165: 10-3-25

Form 1002A

API No.: 35073253350000

**Completion Report**

Spud Date: July 31, 2016

OTC Prod. Unit No.: 073-217924

Drilling Finished Date: August 10, 2016

1st Prod Date: September 14, 2016

Completion Date: September 03, 2016

**Drill Type: HORIZONTAL HOLE**

Min Gas Allowable: Yes

Well Name: LIGHTLE 4-18-6 1H

Purchaser/Measurer: CHESAPEAKE OPERATING LLC

Location: KINGFISHER 4 18N 6W  
SE SE SW SE  
218 FSL 1630 FEL of 1/4 SEC  
Derrick Elevation: 1195 Ground Elevation: 1170

First Sales Date: 09/14/2016

Operator: CHESAPEAKE OPERATING LLC 17441  
PO BOX 18496  
6100 N WESTERN AVE  
OKLAHOMA CITY, OK 73154-0496

Completion Type	
X	Single Zone
	Multiple Zone
	Commingled

Location Exception
Order No
656859

Increased Density
Order No
There are no Increased Density records to display.

Casing and Cement							
Type	Size	Weight	Grade	Feet	PSI	SAX	Top of CMT
SURFACE	9 5/8	36	J-55	1486		610	SURFACE
PRODUCTION	7	26	P-110	6779		251	4100

Liner								
Type	Size	Weight	Grade	Length	PSI	SAX	Top Depth	Bottom Depth
LINER	4 1/2	11.6	P-110EC	4769	0	560	6472	11241

**Total Depth: 11241**

Packer	
Depth	Brand & Type
There are no Packer records to display.	

Plug	
Depth	Plug Type
There are no Plug records to display.	

Initial Test Data										
Test Date	Formation	Oil BBL/Day	Oil-Gravity (API)	Gas MCF/Day	Gas-Oil Ratio Cu FT/BBL	Water BBL/Day	Pumpin or Flowing	Initial Shut-In Pressure	Choke Size	Flow Tubing Pressure
Sep 16, 2016	OSWEGO	496		426	859	1557	ARTIFICIA			370

Completion and Test Data by Producing Formation										
Formation Name: OSWEGO			Code: 404OSWG			Class: OIL				
<b>Spacing Orders</b>				<b>Perforated Intervals</b>						
<b>Order No</b>		<b>Unit Size</b>		<b>From</b>			<b>To</b>			
646210		320		6662			11101			
<b>Acid Volumes</b>				<b>Fracture Treatments</b>						
968,400 GALLONS HCL ACID				24,789 BARRELS FRAC FLUID, NO PROPPANT USED						

Formation	Top
OSWEGO	6590

Were open hole logs run? No

Date last log run:

Were unusual drilling circumstances encountered? No

Explanation:

Other Remarks
PERFORATIONS BELOW CIBP ARE FROM 11,135'-11,176'.

Lateral Holes
Sec: 4 TWP: 18N RGE: 6W County: KINGFISHER
NE NW NE NE
239 FNL 983 FEL of 1/4 SEC
Depth of Deviation: 6062 Radius of Turn: 318 Direction: 360 Total Length: 4651
Measured Total Depth: 11241 True Vertical Depth: 6380 End Pt. Location From Release, Unit or Property Line: 239

FOR COMMISSION USE ONLY
Status: Accepted
1134695

API NO. 35-073-25335  
OTC PROD  
UNIT NO. 073--217924

PLEASE TYPE OR USE BLACK INK ONLY  
NOTE: Attach copy of original 1002A if recompletion or reentry.

OKLAHOMA CORPORATION COMMISSION  
Oil & Gas Conservation Division  
Post Office Box 52000  
Oklahoma City, Oklahoma 73152-2000  
Rule 165:10-3-25

**RECEIVED**

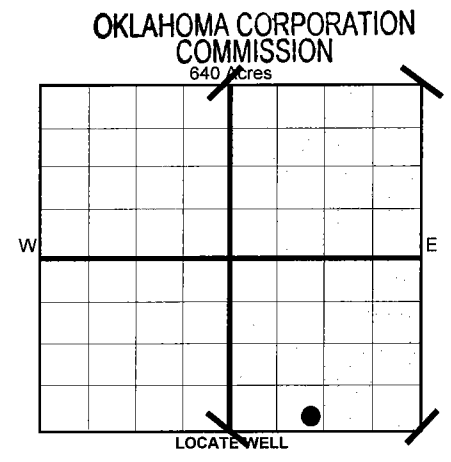
OCT 14 2016

ORIGINAL  
 AMENDED  
Reason Amended  
TYPE OF DRILLING OPERATION  
 STRAIGHT HOLE  DIRECTIONAL HOLE  HORIZONTAL HOLE  
If directional or horizontal, see reverse for bottom hole location.

COMPLETION REPORT

COUNTY KINGFISHER SEC 4 TWP 18N RGE 6W  
LEASE NAME LIGHTLE 4-18-6 WELL NO 1H  
SHL SE 1/4 SE 1/4 SW 1/4 SE 1/4 218 1/4 SEC 1,630  
ELEVATION Derrick Fl 1,195 Ground 1,170  
OPERATOR NAME CHESAPEAKE OPERATING, L.L.C. OTC/OCC OPERATOR NO. 17441  
ADDRESS P.O. BOX 18496  
CITY OKLAHOMA CITY STATE OK ZIP 73154

SPUD DATE 7/31/2016  
DRLG FINISHED DATE 8/10/2016  
DATE OF WELL COMPLETION 9/3/2016  
1ST PROD DATE 9/14/2016  
RECOMP DATE  
Longitude (if Known)



COMPLETION TYPE  
 SINGLE ZONE  
 MULTIPLE ZONE  
 COMMINGLED  
LOCATION EXCEPTION ORDER NO. 656859 F.O.  
INCREASED DENSITY ORDER NO. N/A

CASING & CEMENT (Form 1002C must be attached)

TYPE	SIZE	WEIGHT	GRADE	FEET	PSI	SAX	TOP
CONDUCTOR							
SURFACE	9 5/8"	36#	J-55	1,486		610	SURFACE
INTERMEDIATE							
PRODUCTION	7"	26#	P-110	6,779		251	4,100
LINER	4 1/2"	11.6#	P-110EC	6472-11,241		560	6,472
							11,241

PACKER @ N/A BRAND & TYPE  
PLUG @ 11,108 TYPE CIBP  
TOTAL DEPTH 11,241

COMPLETION & TEST DATA BY PRODUCING FORMATION

FORMATION	OSWEGO						
SPACING & SPACING	320						
ORDER NUMBER	646210						
CLASS: Oil, Gas, Dry, Inj, Disp, Comm Disp, Svc	OIL						
PERFORATED INTERVALS	6662-11,101*	<i>← productive interval (see remarks)</i>					
ACID/VOLUME	HCL Acid 968,400 GALS						
FRACTURE TREATMENT (Fluids/Prop Amounts)	Frac Fluid 24,789 BBLs No Proppant Used						

*Reported to Frac Focus*

Minimum Gas Allowable (165:10-17-7) Gas Purchaser/Mesaurer Chesapeake Operating, L.L.C.  
 OR 1st Sales Date 9/14/2016  
Oil Allowable (165:10-13-3)

INITIAL TEST DATA							
INITIAL TEST DATE	9/16/2016						
OIL-BBL/DAY	496						
OIL-GRAVITY (API)							
GAS-MCF/DAY	426						
GAS-OIL RATIO CU FT/BBL	859						
WATER-BBL/DAY	1557						
PUMPING OR FLOWING	ARTIFICIAL LIFT						
INITIAL SHUT-IN PRESSURE							
CHOKE SIZE							
FLOW TUBING PRESSURE	370						

**AS SUBMITTED**

A record of the formations drilled through, and pertinent remarks are presented on the reverse. I declare that I have knowledge of the contents of this report and am authorized by my organization to make this report, which was prepared by me or under my supervision and direction, with the data and facts stated herein to be true, correct, and complete to the best of my knowledge and belief.

*JP Powell*  
JP Powell, Sr. Regulatory Analyst  
10/13/2016 405-848-8000  
P.O. BOX 18496 OKLAHOMA CITY OK 73154  
ip.powell@chk.com

**PLEASE TYPE OR USE BLACK INK ONLY**  
FORMATION RECORD

Give formation names and tops, if available, or descriptions and thickness of formations drilled through. Show intervals cored or drillstem tested.

LEASE NAME LIGHTLE 4-18-6

WELL NO. 1H

NAMES OF FORMATIONS	TOP
OSWEGO	6,590

FOR COMMISSION USE ONLY

ITD on file  YES  NO

APPROVED \_\_\_\_\_ DISAPPROVED \_\_\_\_\_

2) Reject Codes

\_\_\_\_\_

\_\_\_\_\_

\_\_\_\_\_

\_\_\_\_\_

Were open hole logs run?  yes  no

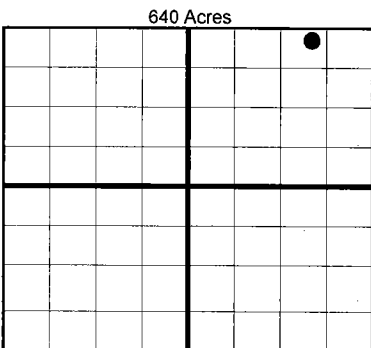
Date last log was run N/A

Was CO<sub>2</sub> encountered?  yes  no at what depths?

Was H<sub>2</sub>S encountered?  yes  no at what depths?

Were unusual drilling circumstances encountered?  yes  no  
If yes, briefly explain.

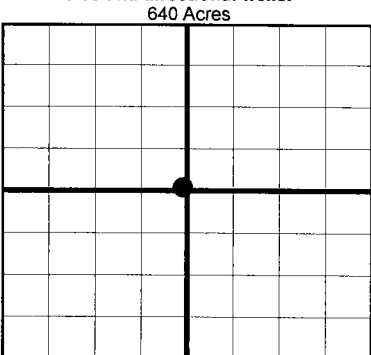
Other remarks: \* PERFORATIONS BELOW CIBP ARE FROM 11,135' - 11,176'



If more than three drainholes are proposed, attach a separate sheet indicating the necessary information.

Direction must be stated in degrees azimuth. Please note, the horizontal drainhole and its end point must be located within the boundaries of the lease or spacing unit.

**Directional surveys are required for all drainholes and directional wells.**



**BOTTOM HOLE LOCATION FOR DIRECTIONAL HOLE**

SEC	TWP	RGE	COUNTY				
Spot Location	1/4	1/4	1/4	1/4	Feet From 1/4 Sec Lines	FSL	FWL
Measured Total Depth	True Vertical Depth		BHL From Lease, Unit, or Property Line:				

**BOTTOM HOLE LOCATION FOR HORIZONTAL HOLE: (LATERALS)**

**LATERAL #1**

SEC	TWP	RGE	COUNTY						
SEC	4	TWP	18N	RGE	6W	COUNTY	KINGFISHER		
Spot Location	NE 1/4	NW 1/4	NE 1/4	NE 1/4	Feet From 1/4 Sec Lines	FNL	239	FEL	983
Depth of Deviation	6,062		Radius of Turn	318	Direction	360	Total Length	4,651	
Measured Total Depth	11,241		True Vertical Depth	6,380		BHL From Lease, Unit, or Property Line: 239			

**LATERAL #2**

SEC	TWP	RGE	COUNTY				
Spot Location	1/4	1/4	1/4	1/4	Feet From 1/4 Sec Lines	FSL	FWL
Depth of Deviation	Radius of Turn		Direction		Total Length		
Measured Total Depth	True Vertical Depth		BHL From Lease, Unit, or Property Line:				

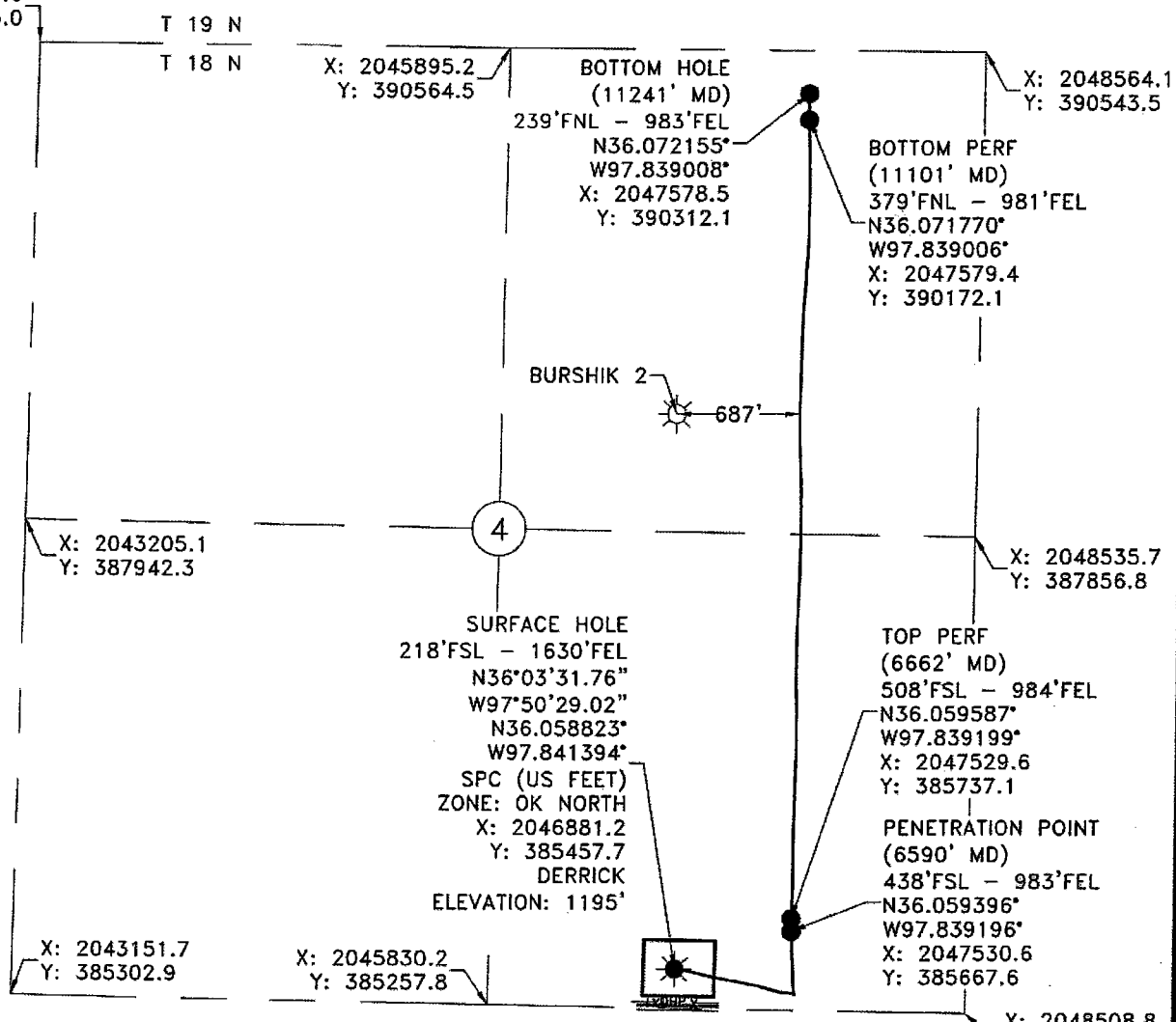
**LATERAL #3**

SEC	TWP	RGE	COUNTY				
Spot Location	1/4	1/4	1/4	1/4	Feet From 1/4 Sec Lines	FSL	FWL
Depth of Deviation	Radius of Turn		Direction		Total Length		
Measured Total Depth	True Vertical Depth		BHL From Lease, Unit, or Property Line:				

SECTION 4, T 18 N - R 06 W, I.M.,  
KINGFISHER COUNTY, OKLAHOMA

X: 2043258.6  
Y: 390585.0

BEARINGS ARE GRID  
OKLAHOMA SPC, NAD 27, NORTH ZONE



Operator: CHESAPEAKE OPERATING, L.L.C. Date Staked: 6/2/2016  
 Lease Name: LIGHTLE 4-18-6 Well No.: 1H Ground Elevation: 1170'  
 Topography and Vegetation: PASTURE  
 Good Drill Site? YES Reference or Alt. Location Stakes Set: NONE  
 Best Accessibility to Location: FROM COUNTY ROAD  
 Distance and Direction from Hwy. Jct. or town: FROM HENNESSEY, OK, HEAD SOUTH ON US HWY 81  
3.5 MILES, THEN EAST ON CO. RD. E0660 3.2 MILES, TURN NORTH INTO LOCATION

Chesapeake Operating, Inc. 

 Gateway Services Group, LLC

PO. BOX 960  
MEEKER, OK 74855  
OFF. (405) 273-0954  
FAX (405) 273-0580  
C.A. NO. 4091 (LS)  
EXP. DATE 6-30-2016

# FINAL AS-DRILLED PLAT

As-drilled information, including final ground elevation furnished by Chesapeake Operating, Inc.

**EXHIBIT "A" AS-DRILLED**  
 LIGHTLE 4-18-6 1H  
 218'FSL - 1630'FEL  
 SE/4 SECTION 4, T 18 N - R 06 W, I.M.,  
 KINGFISHER COUNTY, OKLAHOMA

DRAWN BY: JE	DATE: 9/8/16	CHK'D: RLG
GATEWAY NO.: 16-0107-104AD R1	SCALE: 1"=1000'	
PAD PN#: 928752	WELL PN#: 656369	
REV.   DWN.	DESCRIPTION	DATE
1   RLG	BOTTOM PERF. REVISION	10/3/16