

Oklahoma Corporation Commission
Oil & Gas Conservation Division
Post Office Box 52000
Oklahoma City, Oklahoma 73152-2000
Rule 165: 10-3-25

Form 1002A

API No.: 35093250290000

Completion Report

Spud Date: July 16, 2016

OTC Prod. Unit No.: 093-217875

Drilling Finished Date: August 17, 2016

1st Prod Date: September 15, 2016

Completion Date: September 11, 2016

Drill Type: HORIZONTAL HOLE

Min Gas Allowable: Yes

Well Name: SCHOEPPEL 16-20-12 1H

Purchaser/Measurer: CHESAPEAKE OPERATING LLC

Location: MAJOR 16 20N 12W
S2 S2 S2 SW
275 FSL 1320 FWL of 1/4 SEC
Derrick Elevation: 1423 Ground Elevation: 1398

First Sales Date: 09/15/2016

Operator: CHESAPEAKE OPERATING LLC 17441
PO BOX 18496
6100 N WESTERN AVE
OKLAHOMA CITY, OK 73154-0496

Completion Type	
X	Single Zone
	Multiple Zone
	Commingled

Location Exception	
Order No	
654446	

Increased Density	
Order No	
654445	

Casing and Cement							
Type	Size	Weight	Grade	Feet	PSI	SAX	Top of CMT
SURFACE	13 3/8	54.5	J-55	1513		1509	SURFACE
INTERMEDIATE	9 5/8	40	L-80HC	7707		468	4952
PRODUCTION	5 1/2	20	P-110-IC	13193		991	6700

Liner								
Type	Size	Weight	Grade	Length	PSI	SAX	Top Depth	Bottom Depth
There are no Liner records to display.								

Total Depth: 13193

Packer	
Depth	Brand & Type
There are no Packer records to display.	

Plug	
Depth	Plug Type
13078	CIBP

Initial Test Data										
Test Date	Formation	Oil BBL/Day	Oil-Gravity (API)	Gas MCF/Day	Gas-Oil Ratio Cu FT/BBL	Water BBL/Day	Pumpin or Flowing	Initial Shut-In Pressure	Choke Size	Flow Tubing Pressure
Sep 20, 2016	MISSISSIPPI SOLID	242		636	394	937	FLOWING	1350	22/64	

Completion and Test Data by Producing Formation										
Formation Name: MISSISSIPPI SOLID			Code: 351MSSSD			Class: OIL				
Spacing Orders				Perforated Intervals						
Order No	Unit Size			From			To			
108819	640			8304			13068			
Acid Volumes				Fracture Treatments						
2,600 GALLONS HCL ACID				182,343 BARRELS FRAC FLUID, 13,016,150 POUNDS PROPPANT						

Formation	Top
MISSISSIPPI SOLID	8301

Were open hole logs run? Yes
Date last log run: August 07, 2016

Were unusual drilling circumstances encountered? No
Explanation:

Other Remarks
PILOT HOLE DRILLED FROM 7,841' TO 9,430' AND CEMENTED ENTIRE PILOT HOLE SETTING TWO CEMENT PLUGS AT 7,430' AND 8,430' USING A TOTAL OF 128 SACKS OF CEMENT. OCC - THIS DOCUMENT IS ACCEPTED BASED ON THE DATA SUBMITTED THE FINAL LOCATION EXCEPTION HAS NOT BEEN SUBMITTED.

Lateral Holes
Sec: 16 TWP: 20N RGE: 12W County: MAJOR NE NW NW NW 35 FNL 385 FWL of 1/4 SEC Depth of Deviation: 7851 Radius of Turn: 232 Direction: 358 Total Length: 4892 Measured Total Depth: 13193 True Vertical Depth: 8083 End Pt. Location From Release, Unit or Property Line: 35

FOR COMMISSION USE ONLY
Status: Accepted
1134651

API NO. 093-25029
OTC PROD. UNIT NO. 093-217875

PLEASE TYPE OR USE BLACK INK ONLY
NOTE: Attach copy of original 1002A if recompletion or reentry.

OKLAHOMA CORPORATION COMMISSION
Oil & Gas Conservation Division
Post Office Box 52000
Oklahoma City, Oklahoma 73152-2000
Rule 165:10-3-25

RECEIVED

OCT 07 2016

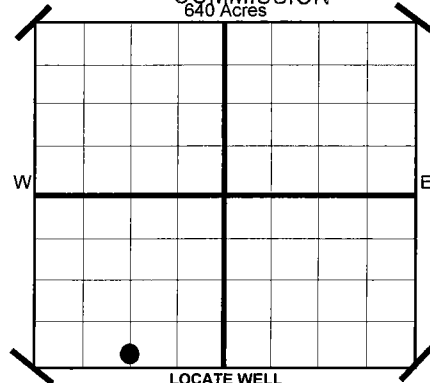
ORIGINAL
 AMENDED
Reason Amended _____
TYPE OF DRILLING OPERATION
 STRAIGHT HOLE DIRECTIONAL HOLE HORIZONTAL HOLE
 SERVICE WELL
If directional or horizontal, see reverse for bottom hole location.

COMPLETION REPORT

SPUD DATE 7/16/2016
DRLG FINISHED DATE 8/17/2016
DATE OF WELL COMPLETION 9/11/2016
1ST PROD DATE 9/15/2016
RECOMP DATE _____
Longitude (if Known) _____

COUNTY MAJOR SEC 16 TWP 20N RGE 12W
LEASE NAME SCHOEPEL 16-20-12 WELL NO 1H
SFL S2 1/4 S2 1/4 S2 1/4 SW 1/4 FSL 275 FWL OF 1/4 SEC 1,320
ELEVATION Latitude (if Known) Longitude (if Known)
Derrick Ft 1,423 Ground 1,398
OPERATOR NAME CHESAPEAKE OPERATING, L.L.C. OTC/OCC OPERATOR NO. 17441
ADDRESS P.O. BOX 18496
CITY OKLAHOMA CITY STATE OK ZIP 73154

OKLAHOMA CORPORATION COMMISSION
640 Acres



COMPLETION TYPE
 SINGLE ZONE
 MULTIPLE ZONE
 COMMINGLED
LOCATION EXCEPTION ORDER NO. 654446 (INTERIM)
INCREASED DENSITY ORDER NO. 654445

CASING & CEMENT (Form 1002C must be attached)

TYPE	SIZE	WEIGHT	GRADE	FEET	PSI	SAX	TOP
CONDUCTOR							
SURFACE	13 3/8"	54.5#	J-55	1,513		1509	SURFACE
INTERMEDIATE	9 5/8"	40#	L-80HC	7,707		468	4,952
PRODUCTION	5 1/2"	20#	P-110-IC	13,193		991	6,700
LINER							

PACKER @ N/A BRAND & TYPE _____ PLUG @ 13,078 TYPE CIBP TOTAL DEPTH 13,193
PACKER @ _____ BRAND & TYPE _____ PLUG @ _____ TYPE _____ PLUG @ _____ TYPE _____

COMPLETION & TEST DATA BY PRODUCING FORMATION

FORMATION	SPACING & SPACING	ORDER NUMBER	CLASS: Oil, Gas, Dry, Inj. Disp, Comm Disp, Svc	PERFORATED INTERVALS	ACID/VOLUME	FRACTURE TREATMENT (Fluids/Prop Amounts)
MISSISSIPPI SOLID	640	108819	OIL	8304-13,068	HCL Acid 2600 GALS Frac Fluid 182,343 BBLs Proppant 13,016,150 LBS	

351 M955D
Reported to Frac Focus

Minimum Gas Allowable (165:10-17-7) OR Gas Purchaser/Measurer Chesapeake Operating, L.L.C.
Oil Allowable (165:10-13-3) 1st Sales Date 9/15/2016

INITIAL TEST DATA

INITIAL TEST DATE	9/20/2016
OIL-BBL/DAY	242
OIL-GRAVITY (API)	
GAS-MCF/DAY	636
GAS-OIL RATIO CU FT/BBL	394
WATER-BBL/DAY	937
PUMPING OR FLOWING	FLOWING
INITIAL SHUT-IN PRESSURE	1,350
CHOKE SIZE	22/64
FLOW TUBING PRESSURE	N/A

AS SUBMITTED

A record of the formations drilled through, and pertinent remarks are presented on the reverse. I declare that I have knowledge of the contents of this report and am authorized by my organization to make this report, which was prepared by me or under my supervision and direction, with the data and facts stated herein to be true, correct, and complete to the best of my knowledge and belief.

JP Powell
SIGNATURE: JP Powell, Sr. Regulatory Analyst
P.O. BOX 18496 OKLAHOMA CITY OK 73154
ADDRESS CITY STATE ZIP
DATE: 10/6/2016
PHONE NUMBER: 405-848-8000
EMAIL ADDRESS: jp.powell@chk.com

PLEASE TYPE OR USE BLACK INK ONLY
FORMATION RECORD

Give formation names and tops, if available, or descriptions and thickness of formations drilled through. Show intervals cored or drillstem tested.

LEASE NAME SCHOEPEL 16-20-12

WELL NO. 1H

NAMES OF FORMATIONS	TOP
MISSISSIPPI SOLID	8,301

FOR COMMISSION USE ONLY

ITD on file YES NO

APPROVED _____ DISAPPROVED _____

2) Reject Codes

Were open hole logs run? yes no

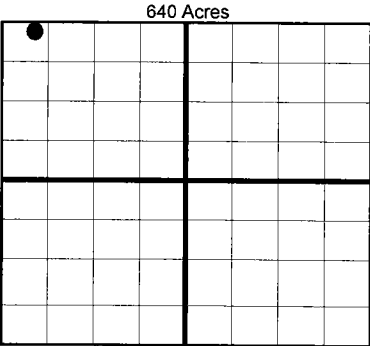
Date Last log was run 8/7/2016

Was CO₂ encountered? yes no at what depths?

Was H₂S encountered? yes no at what depths?

Were unusual drilling circumstances encountered? yes no
If yes, briefly explain.

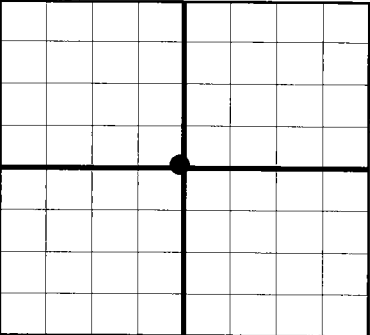
Other remarks: Pilot hole drilled from 7841' to 9430' and cemented entire pilot hole setting two cement plugs at 7430' and 8430' using a total of 128
sax of cement.



If more than three drainholes are proposed, attach a separate sheet indicating the necessary information.

Direction must be stated in degrees azimuth. Please note, the horizontal drainhole and its end point must be located within the boundaries of the lease or spacing unit.

Directional surveys are required for all drainholes and directional wells.
640 Acres



BOTTOM HOLE LOCATION FOR DIRECTIONAL HOLE

SEC	TWP	RGE	COUNTY				
Spot Location	1/4	1/4	1/4	1/4	Feet From 1/4 Sec Lines	FSL	FWL
Measured Total Depth	True Vertical Depth		BHL From Lease, Unit, or Property Line:				

BOTTOM HOLE LOCATION FOR HORIZONTAL HOLE: (LATERALS)

SEC	TWP	RGE	COUNTY	MAJOR					
LATERAL #1	16	20N	12W						
Spot Location	NE 1/4	NW 1/4	NW 1/4	NW 1/4	Feet From 1/4 Sec Lines	FNL	35	FWL	385
Depth of Deviation	7,851		Radius of Turn	232	Direction	358		Total Length	4,892
Measured Total Depth	13,193		True Vertical Depth		8,083		BHL From Lease, Unit, or Property Line:		
							35		

LATERAL #2

SEC	TWP	RGE	COUNTY					
Spot Location	1/4	1/4	1/4	1/4	Feet From 1/4 Sec Lines	FSL	FWL	
Depth of Deviation			Radius of Turn	Direction		Total Length		
Measured Total Depth			True Vertical Depth		BHL From Lease, Unit, or Property Line:			

LATERAL #3

SEC	TWP	RGE	COUNTY					
Spot Location	1/4	1/4	1/4	1/4	Feet From 1/4 Sec Lines	FSL	FWL	
Depth of Deviation			Radius of Turn	Direction		Total Length		
Measured Total Depth			True Vertical Depth		BHL From Lease, Unit, or Property Line:			

TOPOGRAPHIC LAND SURVEYORS OF OKLAHOMA

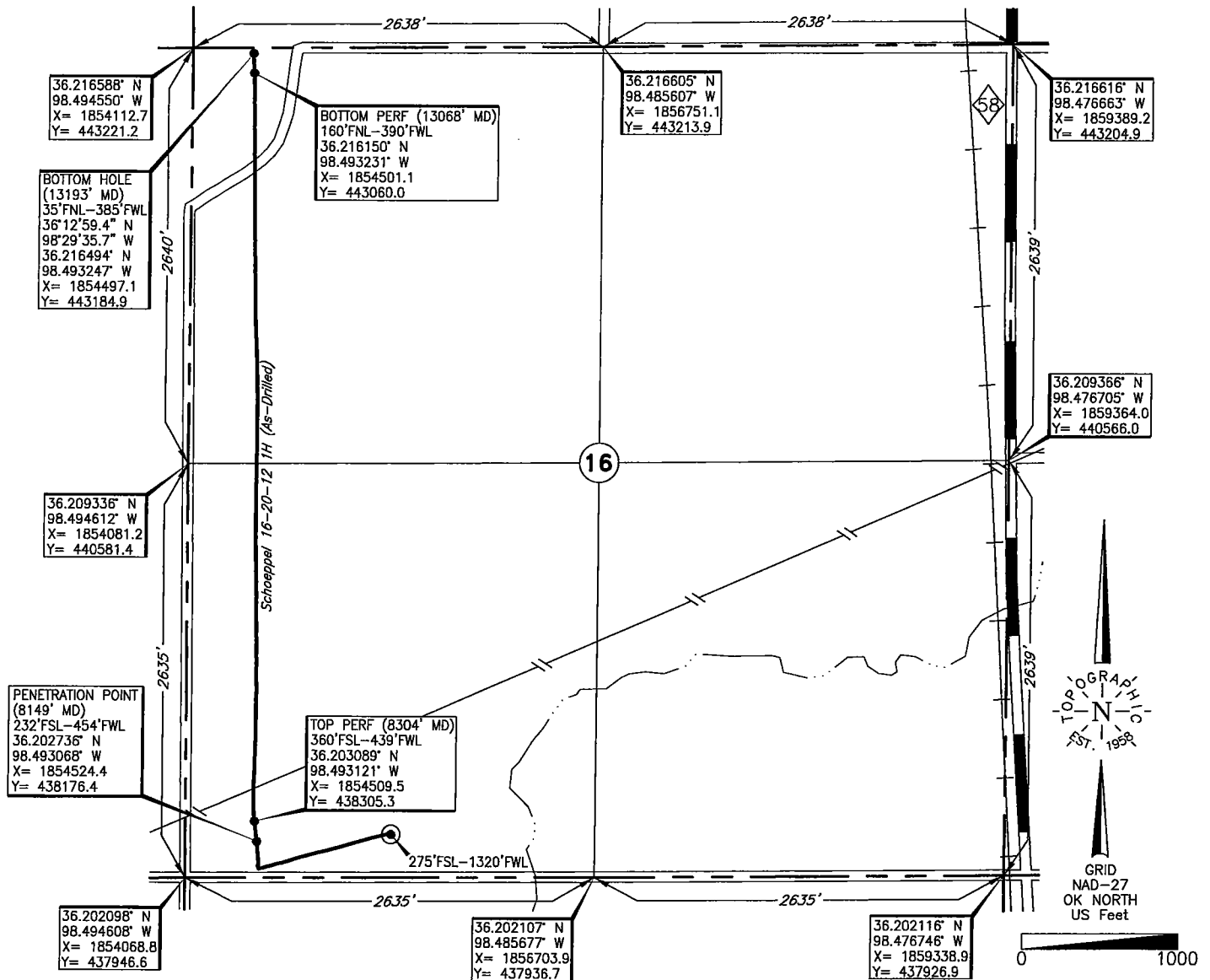
6709 NORTH CLASSEN BLVD., OKLA. CITY, OKLA. 73116 * LOCAL (405) 843-4847 * OUT OF STATE (800) 654-3219
 Certificate of Authorization No. 1293 LS

REVISION "B"
 10-27-2016

MAJOR

County, Oklahoma

275'FSL - 1320'FWL Section 16 Township 20N Range 12W I.M.



Operator: CHESAPEAKE OPERATING, L.L.C.

Lease Name: SCHOEPPEL 16-20-12

Well No.: 1H

ELEVATION:
1398' Gr. at Level Pad

Topography & Vegetation Loc. fell on level pad, ±245' North of E-W fence, ±247' North of power line

Good Drill Site? Yes Reference Stakes or Alternate Location
 Stakes Set None

Best Accessibility to Location From South off county road

Distance & Direction
 from Hwy Jct or Town From Jct. US Hwy. 60 West and St. Hwy. 58, Southside of Fairview, OK,
go 4.0 mi. South on St. Hwy. 58, then ±1.0 mi. West to the SW. Cor. of Sec. 16-T20N-R12W

(This information was gathered with a GPS receiver with ±1 foot Horiz./Vert. accuracy.)
 DATUM: NAD-27
 LAT: 36°12'10.3"N
 LONG: 98°29'24.5"W
 LAT: 36.202858' N
 LONG: 98.490134' W
 STATE PLANE
 COORDINATES: (US Feet)
 ZONE: OK NORTH
 X: 1855390.2
 Y: 438216.7

265390 Date of Drawing: Sep. 13, 2016
 Invoice # 260729 Date Staked: May 18, 2016 JP

FINAL AS-DRILLED PLAT

AS-DRILLED INFORMATION
 FURNISHED BY CHESAPEAKE OPERATING, L.L.C.