

Oklahoma Corporation Commission
Oil & Gas Conservation Division
Post Office Box 52000
Oklahoma City, Oklahoma 73152-2000
Rule 165: 10-3-25

Form 1002A

API No.: 35129240760000

Completion Report

Spud Date: May 29, 2016

OTC Prod. Unit No.: 129-217752

Drilling Finished Date: June 11, 2016

1st Prod Date: September 27, 2016

Completion Date: August 24, 2016

Drill Type: STRAIGHT HOLE

Min Gas Allowable: Yes

Well Name: 507 RANCH 18-8

Purchaser/Measurer: ENBRIDGE PIPELINE

Location: ROGER MILLS 18 13N 24W
N2 N2 S2 NE
1600 FNL 1320 FEL of 1/4 SEC
Derrick Elevation: 2216 Ground Elevation: 2193

First Sales Date: 09/27/2016

Operator: REDLAND RESOURCES LLC 18774

6001 NW 23RD ST
OKLAHOMA CITY, OK 73127-1253

| Completion Type | |
|-----------------|---------------|
| X | Single Zone |
| | Multiple Zone |
| | Commingled |

| Location Exception | |
|---|--|
| Order No | |
| There are no Location Exception records to display. | |

| Increased Density | |
|--|--|
| Order No | |
| There are no Increased Density records to display. | |

| Casing and Cement | | | | | | | |
|-------------------|-------|--------|-------|------|-----|-----|------------|
| Type | Size | Weight | Grade | Feet | PSI | SAX | Top of CMT |
| CONDUCTOR | 20 | | | 80 | | 8 | SURFACE |
| SURFACE | 8.625 | 24 | | 750 | | 315 | SURFACE |
| PRODUCTION | 5.5 | 17 | L-80 | 9476 | | 220 | 7470 |

| Liner | | | | | | | | |
|--|------|--------|-------|--------|-----|-----|-----------|--------------|
| Type | Size | Weight | Grade | Length | PSI | SAX | Top Depth | Bottom Depth |
| There are no Liner records to display. | | | | | | | | |

Total Depth: 9482

| Packer | |
|---|--------------|
| Depth | Brand & Type |
| There are no Packer records to display. | |

| Plug | |
|---------------------------------------|-----------|
| Depth | Plug Type |
| There are no Plug records to display. | |

| Initial Test Data | | | | | | | | | | |
|-------------------|-----------|-------------|-------------------|-------------|-------------------------|---------------|-------------------|--------------------------|------------|----------------------|
| Test Date | Formation | Oil BBL/Day | Oil-Gravity (API) | Gas MCF/Day | Gas-Oil Ratio Cu FT/BBL | Water BBL/Day | Pumpin or Flowing | Initial Shut-In Pressure | Choke Size | Flow Tubing Pressure |
| Oct 04, 2016 | TONKAWA | 127 | 40 | 325 | 2559 | 32 | FLOWING | 1600 | 18/74 | 260 |

| Completion and Test Data by Producing Formation | | |
|---|------------------|--|
| Formation Name: TONKAWA | Code: 406TNKW | Class: OIL |
| Spacing Orders | | Perforated Intervals |
| Order No | Unit Size | From To |
| 126799 | 640 | 9297 9428 |
| Acid Volumes | | Fracture Treatments |
| 3,500 GALLONS 7.5% NE/FE HCL | | 4,630 BARRELS 25 POUNDS X-LINK GEL, 4% KCL, 250,000 POUNDS 20/40 OTTAWA SAND IN 2 STAGES |

| Formation | Top |
|-----------------|------|
| TOP VIRGIL WASH | 8189 |
| TOP DOUGLAS | 8416 |
| DOUGLAS LIME | 8760 |
| TONKAWA MARKER | 9233 |
| TOP TONKAWA | 9292 |

Were open hole logs run? Yes
Date last log run: June 29, 2016

Were unusual drilling circumstances encountered? No
Explanation:

| Other Remarks |
|-----------------------------|
| There are no Other Remarks. |

| FOR COMMISSION USE ONLY | |
|-------------------------|---------|
| Status: Accepted | 1134675 |

RECEIVED

Form 1002A Rev. 2009

OCT 12 2016

OKLAHOMA CORPORATION COMMISSION

API NO. 129-24076
OTC FRAC-217752
UNIT NO.

PLEASE TYPE OR USE BLACK INK ONLY
NOTE:

Attach copy of original 1002A if recompletion or reentry.

OKLAHOMA CORPORATION COMMISSION
Oil & Gas Conservation Division
Post Office Box 52000
Oklahoma City, Oklahoma 73152-2000
Rule 165:10-3-25

COMPLETION REPORT

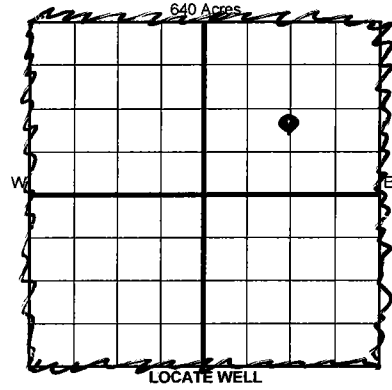
ORIGINAL
AMENDED (Reason)

TYPE OF DRILLING OPERATION

STRAIGHT HOLE
DIRECTIONAL HOLE
HORIZONTAL HOLE
SERVICE WELL

If directional or horizontal, see reverse for bottom hole location.

SPUD DATE 5-29-16
DRLG FINISHED DATE 8-11-16
DATE OF WELL COMPLETION 8-24-16
1st PROD DATE 9-27-16
RECOMP DATE
COUNTY ROGER MILLS SEC 18 TWP 13N RGE 24W
LEASE 507 RANCH NAME
WELL NO. 18-8
ELEVATION 2216 Ground 2193
OPERATOR REDLAND RESOURCES, LLC
ADDRESS 6001 N.W. 23RD
CITY OKLA. CITY STATE OKLA. ZIP 73127



COMPLETION TYPE

SINGLE ZONE
MULTIPLE ZONE
COMMINGLED
LOCATION EXCEPTION ORDER
INCREASED DENSITY ORDER NO.

CASING & CEMENT (Form 1002C must be attached)

Table with columns: TYPE, SIZE, WEIGHT, GRADE, FEET, PSI, SAX, TOP OF CMT. Rows include CONDUCTOR, SURFACE, INTERMEDIATE, PRODUCTION, LINER.

PACKER @ BRAND & TYPE PLUG @ TYPE PLUG @ TYPE
PACKER @ BRAND & TYPE PLUG @ TYPE PLUG @ TYPE

TOTAL DEPTH 9482

COMPLETION & TEST DATA BY PRODUCING FORMATION

Table with columns: FORMATION, SPACING & SPACING ORDER NUMBER, CLASS, PERFORATED INTERVALS, ACID/VOLUME, FRACTURE TREATMENT. Includes handwritten notes like '406TNKW' and 'Reported to Frac Focus'.

Min Gas Allowable (165:10-17-7) Gas Purchaser/Measurer ENBRIDGE PIPELINE
Oil Allowable (165:10-13-3) First Sales Date 9-27-16

INITIAL TEST DATA

Table with columns: INITIAL TEST DATE, OIL-BBL/DAY, OIL-GRAVITY (API), GAS-MCF/DAY, GAS-OIL RATIO CU FT/BBL, WATER-BBL/DAY, PUMPING OR FLOWING, INITIAL SHUT-IN PRESSURE, CHOKE SIZE, FLOW TUBING PRESSURE.

AS SUBMITTED

A record of the formations drilled through, and pertinent remarks are presented on the reverse. I declare that I have knowledge of the contents of this report and am authorized by my organization to make this report, which was prepared by me or under my supervision and direction, with the data and facts stated herein to be true, correct, and complete to the best of my knowledge and belief.

SIGNATURE: LEROY A. BUCK
NAME (PRINT OR TYPE): LEROY A. BUCK
DATE: 10-10-16
PHONE NUMBER: 405 789-7104
ADDRESS: 6001 N.W. 23RD
CITY: OKLA. CITY STATE: OKLA. ZIP: 73127
EMAIL ADDRESS: redlab5841@gmail.com

PLEASE TYPE OR USE BLACK INK ONLY
FORMATION RECORD

Give formation names and tops, if available, or descriptions and thickness of formations drilled through. Show intervals cored or drillstem tested.

507 RANCH

18-8

LEASE NAME _____ WELL NO. _____

| NAMES OF FORMATIONS | TOP |
|---------------------|------|
| TOP VIRGIL WASH | 8189 |
| TOP DOUGLAS | 8416 |
| DOUGLAS LIME | 8760 |
| TONKAWA MARKER | 9233 |
| TOP TONKAWA | 9292 |

FOR COMMISSION USE ONLY

ITD on file YES NO

APPROVED _____ DISAPPROVED _____

2) Reject Codes _____

Were open hole logs run? yes no

Date Last log was run 6-29-16 BOND LOG

Was CO₂ encountered? yes no at what depths? _____

Was H₂S encountered? yes no at what depths? _____

Were unusual drilling circumstances encountered? yes no
If yes, briefly explain below

Other remarks: _____

640 Acres

| | | | | | | | | | |
|--|--|--|--|--|--|--|--|--|--|
| | | | | | | | | | |
| | | | | | | | | | |
| | | | | | | | | | |
| | | | | | | | | | |
| | | | | | | | | | |
| | | | | | | | | | |
| | | | | | | | | | |
| | | | | | | | | | |
| | | | | | | | | | |
| | | | | | | | | | |

If more than three drainholes are proposed, attach a separate sheet indicating the necessary information.

Direction must be stated in degrees azimuth. Please note, the horizontal drainhole and its end point must be located within the boundaries of the lease or spacing unit.

Directional surveys are required for all drainholes and directional wells.

640 Acres

| | | | | | | | | | |
|--|--|--|--|--|--|--|--|--|--|
| | | | | | | | | | |
| | | | | | | | | | |
| | | | | | | | | | |
| | | | | | | | | | |
| | | | | | | | | | |
| | | | | | | | | | |
| | | | | | | | | | |
| | | | | | | | | | |
| | | | | | | | | | |
| | | | | | | | | | |

BOTTOM HOLE LOCATION FOR DIRECTIONAL HOLE

| SEC | TWP | RGE | COUNTY | | |
|----------------------|-----|---------------------|---|-----|-----|
| Spot Location | | | Feet From 1/4 Sec Lines | FSL | FWL |
| 1/4 | 1/4 | 1/4 | 1/4 | | |
| Measured Total Depth | | True Vertical Depth | BHL From Lease, Unit, or Property Line: | | |

BOTTOM HOLE LOCATION FOR HORIZONTAL HOLE: (LATERALS)

LATERAL #1

| SEC | TWP | RGE | COUNTY | | |
|----------------------|-----|---------------------|---|--------------|-----|
| Spot Location | | | Feet From 1/4 Sec Lines | FSL | FWL |
| 1/4 | 1/4 | 1/4 | 1/4 | | |
| Depth of Deviation | | Radius of Turn | Direction | Total Length | |
| Measured Total Depth | | True Vertical Depth | BHL From Lease, Unit, or Property Line: | | |

LATERAL #2

| SEC | TWP | RGE | COUNTY | | |
|----------------------|-----|---------------------|---|--------------|-----|
| Spot Location | | | Feet From 1/4 Sec Lines | FSL | FWL |
| 1/4 | 1/4 | 1/4 | 1/4 | | |
| Depth of Deviation | | Radius of Turn | Direction | Total Length | |
| Measured Total Depth | | True Vertical Depth | BHL From Lease, Unit, or Property Line: | | |

LATERAL #3

| SEC | TWP | RGE | COUNTY | | |
|----------------------|-----|---------------------|---|--------------|-----|
| Spot Location | | | Feet From 1/4 Sec Lines | FSL | FWL |
| 1/4 | 1/4 | 1/4 | 1/4 | | |
| Depth of Deviation | | Radius of Turn | Direction | Total Length | |
| Measured Total Depth | | True Vertical Depth | BHL From Lease, Unit, or Property Line: | | |