

Oklahoma Corporation Commission
Oil & Gas Conservation Division
Post Office Box 52000
Oklahoma City, Oklahoma 73152-2000
Rule 165: 10-3-25

Form 1002A

API No.: 35045236090000

Completion Report

Spud Date: June 03, 2016

OTC Prod. Unit No.: 045217853

Drilling Finished Date: June 14, 2016

1st Prod Date: July 31, 2016

Completion Date: June 17, 2016

Drill Type: HORIZONTAL HOLE

Well Name: NEIDENS 10 5H

Purchaser/Measurer: ETC FIELD SERVICES

Location: ELLIS 10 20N 26W
SW SE SW SE
255 FSL 1905 FEL of 1/4 SEC
Latitude: 36.130237 Longitude: 99.57333
Derrick Elevation: 2456 Ground Elevation: 2438

First Sales Date: 07/31/2016

Operator: JONES ENERGY LLC 21043

807 LAS CIMAS PKWY STE 350
AUSTIN, TX 78746-6193

Completion Type	
X	Single Zone
	Multiple Zone
	Commingled

Location Exception
Order No
645849

Increased Density
Order No
646047

Casing and Cement							
Type	Size	Weight	Grade	Feet	PSI	SAX	Top of CMT
SURFACE	13.375	55	J55	668		745	SURFACE
INTERMEDIATE	7	26	P110	8539		405	8537

Liner								
Type	Size	Weight	Grade	Length	PSI	SAX	Top Depth	Bottom Depth
LINER	8.750	26	P110	4511	0	0	8328	12839

Total Depth: 12841

Packer	
Depth	Brand & Type
There are no Packer records to display.	

Plug	
Depth	Plug Type
There are no Plug records to display.	

Initial Test Data										
Test Date	Formation	Oil BBL/Day	Oil-Gravity (API)	Gas MCF/Day	Gas-Oil Ratio Cu FT/BBL	Water BBL/Day	Pumpin or Flowing	Initial Shut-In Pressure	Choke Size	Flow Tubing Pressure
Aug 31, 2016	CLEVELAND	61	44	910	14918	91	FLOWING	1860	1/64	280

Completion and Test Data by Producing Formation									
Formation Name: CLEVELAND				Code: 405CLVD			Class: OIL		
Spacing Orders				Perforated Intervals					
Order No		Unit Size		From			To		
566183		640		8567			12811		
Acid Volumes				Fracture Treatments					
There are no Acid Volume records to display.				59459 BBLS FLUID 2430704 LBS PROPPANT					

Formation	Top
CLEVELAND	8345

Were open hole logs run? No
Date last log run:

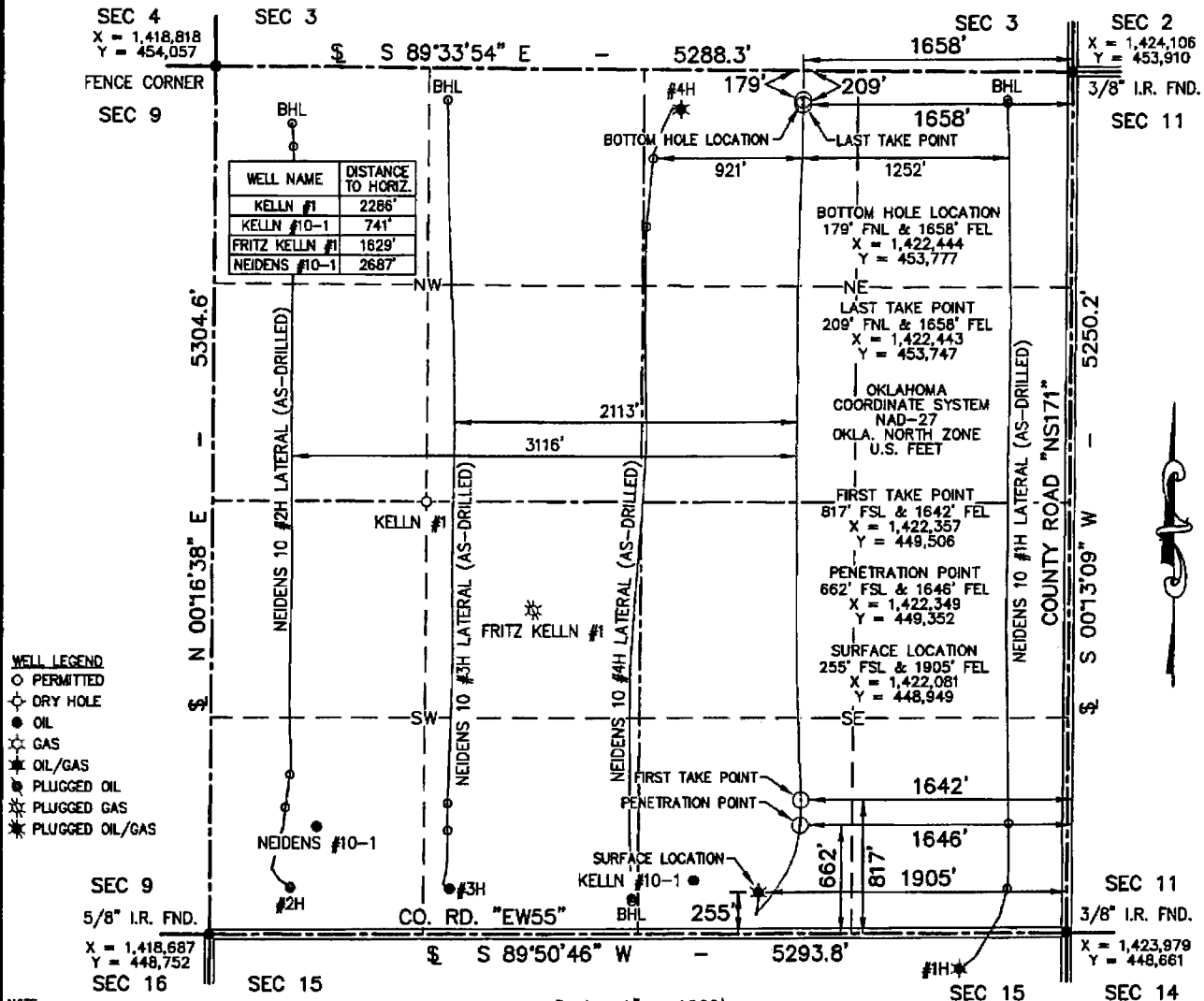
Were unusual drilling circumstances encountered? No
Explanation:

Other Remarks
OCC: FLE ORDER HAS NOT BEEN ISSUED. WE HAVE ACCEPTED OPERATORS DATA AS SUBMITTED. IRREGULAR SECTION. OPEN HOLE COMPLETION FROM 8539' TO TOTAL DEPTH OF 12841'.

Lateral Holes
Sec: 10 TWP: 20N RGE: 26W County: ELLIS NW NE NW NE 179 FNL 1658 FEL of 1/4 SEC Depth of Deviation: 7398 Radius of Turn: 650 Direction: 3 Total Length: 4304 Measured Total Depth: 12841 True Vertical Depth: 8128 End Pt. Location From Release, Unit or Property Line: 179

FOR COMMISSION USE ONLY
<div>Status: Accepted</div> <div>1134487</div>

COMPANY JONES ENERGY, LLC LEASE NEIDENS 10 WELL NO. 5H
SECTION 10 TOWNSHIP 20-N RANGE 26-WM LOCATION 255' FSL 1905' FEL
COUNTY ELLIS STATE OKLAHOMA TOPOGRAPHY AND VEGETATION EXISTING PAD
LATITUDE 36°13'02.37" LONGITUDE -99°57'33.30" NAD27 ELEVATION 2438' NGVD29 DATE STAKED 6/12/15
DIRECTION FROM NEAREST TOWN APPROXIMATELY 6.0 MILES SOUTHWEST OF SHATTUCK, OKLAHOMA



1. This plat is intended for Oklahoma Corporation Commission Permit purposes only and is NOT to be relied upon as a boundary survey and is NOT to be used to convey or establish real property interests.
2. Bearings and dimensions shown are based on Geodetic Azimuth and Ground distances. All X,Y coordinates are based on NAD27, Oklahoma State Plane, U.S. Feet.
3. X,Y Coordinates were derived from GPS RTK methods and are only accurate within +/- 10 feet.
4. As-drawn data shown on this plat was provided by client and /or third party. Information was not nor has not been field verified by Surveyor.

THIS IS TO CERTIFY THAT THE ABOVE PLAT WAS PREPARED FROM FIELD NOTES OF ACTUAL SURVEYS MADE BY MYSELF OR OTHERS UNDER MY SUPERVISION AND THAT THE SAME ARE TRUE AND CORRECT TO THE BEST OF MY KNOWLEDGE AND BELIEF.

SIGNED:

DATED: 10/4/16



Certificate of Authorization No. 3415, Exp. June 30, 2018



JONES

807 LAS CINAS PARKWAY • SUITE 350 • AUSTIN, TEXAS 78748

FIELD:	N/A
DRAWN:	CM
DATE:	10/4/16
CHECKED:	MLS
REVISION:	



JOB NO.	215-258-5
---------	-----------