

Oklahoma Corporation Commission  
Oil & Gas Conservation Division  
Post Office Box 52000  
Oklahoma City, Oklahoma 73152-2000  
Rule 165: 10-3-25

Form 1002A

API No.: 35043234430000

**Completion Report**

Spud Date: December 06, 2015

OTC Prod. Unit No.:

Drilling Finished Date: January 07, 2016

1st Prod Date: July 03, 2016

Completion Date: July 03, 2016

**Drill Type: HORIZONTAL HOLE**  
**DIRECTIONAL HOLE**

Well Name: BETTY 34-1H

Purchaser/Measurer:

Location: DEWEY 33 20N 17W  
NW SE SE SE  
500 FSL 2240 FWL of 1/4 SEC  
Latitude: 36.1601346 Longitude: -99.0105479  
Derrick Elevation: 0 Ground Elevation: 1836

First Sales Date:

Operator: ORCA OPERATING COMPANY LLC 22354

427 S BOSTON AVE STE 400  
TULSA, OK 74103-4114

Completion Type	
X	Single Zone
	Multiple Zone
	Commingled

Location Exception
Order No
There are no Location Exception records to display.

Increased Density
Order No
There are no Increased Density records to display.

Casing and Cement							
Type	Size	Weight	Grade	Feet	PSI	SAX	Top of CMT
CONDUCTOR	20		0.25	90		9	SURFACE
SURFACE	9 5/8	36	J-55	2018		680	SURFACE
PRODUCTION	7	26	L-80	9821		370	5399

Liner								
Type	Size	Weight	Grade	Length	PSI	SAX	Top Depth	Bottom Depth
There are no Liner records to display.								

**Total Depth: 9821**

Packer	
Depth	Brand & Type
There are no Packer records to display.	

Plug	
Depth	Plug Type
There are no Plug records to display.	

Initial Test Data										
Test Date	Formation	Oil BBL/Day	Oil-Gravity (API)	Gas MCF/Day	Gas-Oil Ratio Cu FT/BBL	Water BBL/Day	Pumpin or Flowing	Initial Shut-In Pressure	Choke Size	Flow Tubing Pressure
Jun 23, 2016	CHESTER UP	51		418	8196	872	PUMPING		OPEN	

Completion and Test Data by Producing Formation										
Formation Name: CHESTER UP			Code: 354CSTRU			Class: OIL				
<b>Spacing Orders</b>				<b>Perforated Intervals</b>						
<b>Order No</b>		<b>Unit Size</b>		<b>From</b>			<b>To</b>			
648851		640		There are no Perf. Intervals records to display.						
<b>Acid Volumes</b>				<b>Fracture Treatments</b>						
39,668 GALLONS				There are no Fracture Treatments records to display.						

Formation	Top
OSWEGO	7828
RED FORK	8290
INOLA	8424
THIRTEEN FINGER	8495
MORROW	9374
BRITT	9423

Were open hole logs run? No

Date last log run:

Were unusual drilling circumstances encountered? Yes

Explanation: UNABLE TO RUN LOGS DUE TO SHALE COLLAPSING. HAVE MUD LOGS AND GR FROM MWD TOOLS ONLY.

Other Remarks
OCC - THIS WELL CONSISTS OF TWO LATERALS DRILLED OPEN HOLE THROUGH WINDOW CUT IN THE 7" CASING AT 9,421'. BOTH LATERALS ARE OPEN HOLE TO TERMINUS OF EACH LATERAL. THEY ARE AT A LEGAL DISTANCE FROM THE OUTSIDE BOUNDARY OF THE UNIT.

**Bottom Holes**

Sec: 34 TWP: 20N RGE: 17W County: WOODWARD

SW SE NW SW

1554 FSL 963 FWL of 1/4 SEC

Depth of Deviation: 0 Radius of Turn: 0 Direction: 0 Total Length: 0

Measured Total Depth: 9821 True Vertical Depth: 8947 End Pt. Location From Release, Unit or Property Line: 963

**Lateral Holes**

Sec: 34 TWP: 20N RGE: 17W County: WOODWARD

SW SE NE NW

1523 FSL 2145 FWL of 1/4 SEC

Depth of Deviation: 7172 Radius of Turn: 3533 Direction: 45 Total Length: 1981

Measured Total Depth: 12686 True Vertical Depth: 8700 End Pt. Location From Release, Unit or Property Line: 1117

Sec: 34 TWP: 20N RGE: 17W County: WOODWARD

NW NE NW SE

2504 FSL 993 FWL of 1/4 SEC

Depth of Deviation: 7172 Radius of Turn: 3533 Direction: 75 Total Length: 2019

Measured Total Depth: 12724 True Vertical Depth: 8740 End Pt. Location From Release, Unit or Property Line: 1647

**FOR COMMISSION USE ONLY**

1134558

Status: Accepted

API NO. 043-23443  
 OTC PROD.  
 UNIT NO.

PLEASE TYPE OR USE BLACK INK ONLY  
 NOTE:

Attach copy of original 1002A  
 if recompletion or reentry.

OKLAHOMA CORPORATION COMMISSION  
 Oil & Gas Conservation Division  
 Post Office Box 52000  
 Oklahoma City, Oklahoma 73152-2000  
 Rule 165:10-3-25

RECEIVED

Form 1002A  
 Rev. 2009

AUG 04 2016

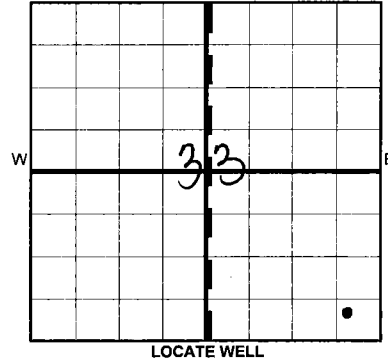
OKLAHOMA CORPORATION COMMISSION  
 640 Acres

ORIGINAL  
 AMENDED (Reason)

COMPLETION REPORT

TYPE OF DRILLING OPERATION  
 STRAIGHT HOLE  DIRECTIONAL HOLE  HORIZONTAL HOLE  
 SERVICE WELL  
 If directional or horizontal, see reverse for bottom hole location.

SPUD DATE 12-6-2015  
 DRLG FINISHED DATE 1-7-2016  
 DATE OF WELL COMPLETION 7-3-16  
 1st PROD DATE 7-3-16  
 RECOMP DATE  
 OPERATOR NAME ORCA Operating Company LLC  
 OTC/OCC OPERATOR NO. 22354  
 CITY Tulsa STATE OK ZIP 74103-4114



COUNTY DEWEY SEC 33 TWP 20N RGE 17W  
 LEASE NAME BETTY WELL NO. 34-1H  
 NW 1/4 SE 1/4 SE 1/4 SE 1/4 FSL OF 1/4 SEC 500 FWL OF 1/4 SEC 2240  
 ELEVATIO N Derrick Ground 1836 Latitude (if known) 36.1601346 Longitude (if known) -99.0105479  
 ADDRESS 427 S Boston Ste 400  
 CITY Tulsa STATE OK ZIP 74103-4114

COMPLETION TYPE  
 SINGLE ZONE  
 MULTIPLE ZONE  
 COMMINGLED  
 LOCATION EXCEPTION ORDER INCREASED DENSITY ORDER NO. N/A

CASING & CEMENT (Form 1002C must be attached)								
TYPE	SIZE	WEIGHT	GRADE	FEET	PSI	SAX	TOP OF CMT	
CONDUCTOR	20"		0.25	90		9 yds	Surface	
SURFACE	9-5/8"	36	J55	2018		680	Surface	
INTERMEDIATE								
PRODUCTION	7"	26	L80	9821		370	5399 est	
LINER								
							TOTAL DEPTH	9,821

PACKER @ \_\_\_\_\_ BRAND & TYPE \_\_\_\_\_ PLUG @ \_\_\_\_\_ TYPE \_\_\_\_\_ PLUG @ \_\_\_\_\_ TYPE \_\_\_\_\_  
 PACKER @ \_\_\_\_\_ BRAND & TYPE \_\_\_\_\_ PLUG @ \_\_\_\_\_ TYPE \_\_\_\_\_ PLUG @ \_\_\_\_\_ TYPE \_\_\_\_\_

COMPLETION & TEST DATA BY PRODUCING FORMATION **354CSTRU**

FORMATION	UPPER CHESTER
SPACING & SPACING ORDER NUMBER	648851 - 640 acres
CLASS: Oil, Gas, Dry, Inj, Disp, Comm Disp, Svc	OIL
PERFORATED INTERVALS	<del>9424-12686</del> <del>9916-12724</del> <i>open hole</i>
ACID/VOLUME	39,668 GAL
FRACTURE TREATMENT (Fluids/Prop Amounts)	NONE

**AS SUBMITTED**

Min Gas Allowable (165:10-17-7) OR  Oil Allowable (165:10-13-3)  
 Gas Purchaser/Measurer N/A  
 First Sales Date N/A

INITIAL TEST DATA

INITIAL TEST DATE	6/23/2016
OIL-BBL/DAY	51
OIL-GRAVITY ( API)	N/A
GAS-MCF/DAY	418
GAS-OIL RATIO CU FT/BBL	8196:1
WATER-BBL/DAY	872
PUMPING OR FLOWING	PUMPING
INITIAL SHUT-IN PRESSURE	0
CHOKE SIZE	OPEN
FLOW TUBING PRESSURE	N/A

A record of the formations drilled through, and pertinent remarks are presented on the reverse. I declare that I have knowledge of the contents of this report and am authorized by my organization to make this report, which was prepared by me or under my supervision and direction, with the data and facts stated herein to be true, correct, and complete to the best of my knowledge and belief.

*Jason Andrews*  
 SIGNATURE NAME (PRINT OR TYPE) Jason Andrews  
 427 S. Boston Ave. STE 400 Tulsa OK 74103  
 ADDRESS CITY STATE ZIP  
 DATE 8/2/16  
 PHONE NUMBER 918-587-3104  
 EMAIL ADDRESS jandrews@orcaoperating.com

PLEASE TYPE OR USE BLACK INK ONLY  
FORMATION RECORD

Give formation names and tops, if available, or descriptions and thickness of formations drilled through. Show intervals cored or drillstem tested.

LEASE NAME BETTY WELL NO. 34-1H

NAMES OF FORMATIONS	TOP
Oswego	7,828
Red Fork	8,290
Inola	8424
13 Fingers	8,495
Morrow	9,374
Britt	9,423

FOR COMMISSION USE ONLY

ITD on file  YES  NO

APPROVED \_\_\_\_\_ DISAPPROVED \_\_\_\_\_

2) Reject Codes \_\_\_\_\_  
\_\_\_\_\_  
\_\_\_\_\_  
\_\_\_\_\_

Were open hole logs run? \_\_\_ yes  no

Date Last log was run \_\_\_\_\_

Was CO<sub>2</sub> encountered? \_\_\_ yes  no at what depths? \_\_\_\_\_

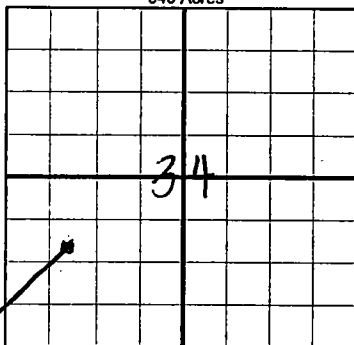
Was H<sub>2</sub>S encountered? \_\_\_ yes  no at what depths? \_\_\_\_\_

Were unusual drilling circumstances encountered?  yes \_\_\_ no  
If yes, briefly explain below \_\_\_\_\_

Other remarks: Unable to run logs due to shale collapsing, have mud logs and GR from MWD tools only.

OCC - This well consist of 2 laterals drilled open hole thru window cut in the 7" casing at 9421' both laterals are open hole to terminus of each lateral. They are at a legal distance from the outside boundary of the units.

640 Acres

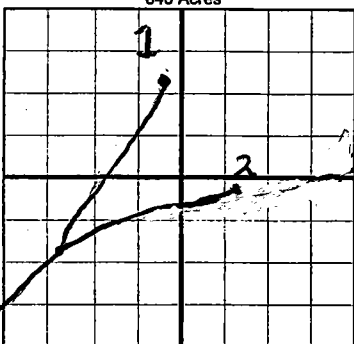


If more than three drainholes are proposed, attach a separate sheet indicating the necessary information.

Direction must be stated in degrees azimuth. Please note, the horizontal drainhole and its end point must be located within the boundaries of the lease or spacing unit.

Directional surveys are required for all drainholes and directional wells.

640 Acres



BOTTOM HOLE LOCATION FOR DIRECTIONAL HOLE

SEC 34	TWP 20N	RGE 17W	COUNTY	WOODWARD					
Spot Location			SW 1/4	SE 1/4	NW 1/4	SW 1/4	Feet From 1/4 Sec Lines	FSL 1554	FWL 963
Measured Total Depth			9821		True Vertical Depth		8947		
					BHL From Lease, Unit, or Property Line:		963 FT		

BOTTOM HOLE LOCATION FOR HORIZONTAL HOLE: (LATERALS)

LATERAL #1

SEC 34	TWP 20N	RGE 17W	COUNTY	WOODWARD					
Spot Location			SW 1/4	SE 1/4	NE 1/4	NW 1/4	Feet From 1/4 Sec Lines	FSL 1523	FWL 2145
Depth of Deviation			7,172		Radius of Turn		3533		Direction 45° NNE
Measured Total Depth			12,686		True Vertical Depth		8,700		Total Length 1981-3,265
					BHL From Lease, Unit, or Property Line:		1117		

LATERAL #2

SEC 34	TWP 20N	RGE 17W	COUNTY	WOODWARD					
Spot Location			NW 1/4	NE 1/4	NW 1/4	SE 1/4	Feet From 1/4 Sec Lines	FSL 2504	FWL 993
Depth of Deviation			7172-9945		Radius of Turn		3533		Direction 75° ENE
Measured Total Depth			12,724		True Vertical Depth		8740		Total Length 2019-2809
					BHL From Lease, Unit, or Property Line:		993 1647		

LATERAL #3

SEC	TWP	RGE	COUNTY						
Spot Location			1/4	1/4	1/4	1/4	Feet From 1/4 Sec Lines	FSL	FWL
Depth of Deviation					Radius of Turn		Direction		Total Length
Measured Total Depth					True Vertical Depth		BHL From Lease, Unit, or Property Line:		