

Oklahoma Corporation Commission
Oil & Gas Conservation Division
Post Office Box 52000
Oklahoma City, Oklahoma 73152-2000
Rule 165: 10-3-25

Form 1002A

API No.: 35003231850001

Completion Report

Spud Date: April 23, 2015

OTC Prod. Unit No.: 003-218711

Drilling Finished Date: May 07, 2015

1st Prod Date: August 31, 2016

Amended

Completion Date: August 12, 2016

Amend Reason: SHOW COMPLETION

Drill Type: HORIZONTAL HOLE

Min Gas Allowable: Yes

Well Name: ARLENE 26-26-11 1H

Purchaser/Measurer: CHESAPEAKE OPERATING LLC

Location: ALFALFA 26 26N 11W
NW NE NW NE
225 FNL 1940 FEL of 1/4 SEC
Derrick Elevation: 1202 Ground Elevation: 1180

First Sales Date: 08/31/2016

Operator: CHESAPEAKE OPERATING LLC 17441
PO BOX 18496
6100 N WESTERN AVE
OKLAHOMA CITY, OK 73154-0496

Completion Type	
X	Single Zone
	Multiple Zone
	Commingled

Location Exception
Order No
656513

Increased Density
Order No
637899

Casing and Cement							
Type	Size	Weight	Grade	Feet	PSI	SAX	Top of CMT
SURFACE	13 3/8	48	J-55	620		675	SURFACE
INTERMEDIATE	9 5/8	36	J-55	1217		345	SURFACE
PRODUCTION	7	26	P-110EC	5700		305	2562

Liner								
Type	Size	Weight	Grade	Length	PSI	SAX	Top Depth	Bottom Depth
LINER	4 1/2	11.6	P-110	5138	0	515	5347	10485

Total Depth: 10485

Packer	
Depth	Brand & Type
5282	AS-3

Plug	
Depth	Plug Type
There are no Plug records to display.	

Initial Test Data										
Test Date	Formation	Oil BBL/Day	Oil-Gravity (API)	Gas MCF/Day	Gas-Oil Ratio Cu FT/BBL	Water BBL/Day	Pumpin or Flowing	Initial Shut-In Pressure	Choke Size	Flow Tubing Pressure
Sep 15, 2016	MISSISSIPPIAN	92		1777	19315	1987	ARTIFICIA			221

Completion and Test Data by Producing Formation										
Formation Name: MISSISSIPPIAN			Code: 359MSSP			Class: GAS				
Spacing Orders				Perforated Intervals						
Order No	Unit Size			From			To			
618842	640			5715			10346			
Acid Volumes				Fracture Treatments						
9,000 GALLONS HCL ACID				45,811 BARRELS FRAC FLUID, 437,600 POUNDS PROPPANT						

Formation	Top
MISSISSIPPIAN	5551

Were open hole logs run? No

Date last log run:

Were unusual drilling circumstances encountered? No

Explanation:

Other Remarks
There are no Other Remarks.

Lateral Holes
Sec: 26 TWP: 26N RGE: 11W County: ALFALFA
SW SW SE SE
181 FSL 1102 FEL of 1/4 SEC
Depth of Deviation: 5262 Radius of Turn: 386 Direction: 176 Total Length: 4934
Measured Total Depth: 10485 True Vertical Depth: 5648 End Pt. Location From Release, Unit or Property Line: 181

FOR COMMISSION USE ONLY
Status: Accepted
1134555

API NO. 35-003-23185
 OTC PROD.
 UNIT NO. 003-218711

PLEASE TYPE OR USE BLACK INK ONLY
 NOTE: Attach copy of original 1002A if recompletion or reentry.

OKLAHOMA CORPORATION COMMISSION
 Oil & Gas Conservation Division
 Post Office Box 52000
 Oklahoma City, Oklahoma 73152-2000
 Rule 165:10-3-25

RECEIVED
 009

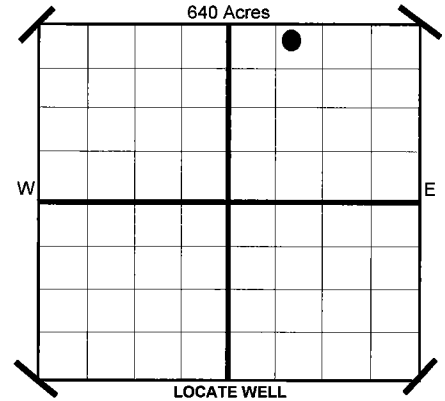
SEP 27 2016

ORIGINAL AMENDED
 Reason Amended
 show completion
 Reclassify as Producing Well

TYPE OF DRILLING OPERATION
 STRAIGHT HOLE SERVICE WELL
 DIRECTIONAL HOLE
 HORIZONTAL HOLE

ALFALFA COUNTY SEC 26 TWP 26N RGE 11W
 ARLENE 26-26-11 LEASE NAME
 NW 1/4 NE 1/4 NW 1/4 NE 1/4 225 1/4 SEC 1,940
 ELEVATION 1,202 Ground 1,180
 OPERATOR NAME CHESAPEAKE OPERATING, L.L.C.
 ADDRESS P.O. BOX 18496
 CITY OKLAHOMA CITY STATE OK ZIP 73154

COMPLETION REPORT
 SPUD DATE 4/23/2015
 DRLG FINISHED DATE 5/7/2015
 DATE OF WELL COMPLETION 8/12/2016
 1ST PROD DATE 8/31/2016
 RECOMP DATE
 Longitude (if Known)



COMPLETION TYPE
 SINGLE ZONE
 MULTIPLE ZONE
 COMMINGLED
 LOCATION EXCEPTION ORDER NO. 637000 (INTERIM)
 INCREASED DENSITY ORDER NO. 637899

TYPE	SIZE	WEIGHT	GRADE	FEET	PSI	SAX	TOP	
CONDUCTOR								
SURFACE	13 3/8"	48#	J-55	620		675	SURFACE	
INTERMEDIATE	9 5/8"	36#	J-55	1,217		345	SURFACE	
PRODUCTION	7"	26#	P-110EC	5,700		305	2,562	
LINER	4 1/2"	11.6#	P-110	5,347-10,485		515	5,348	
							TOTAL DEPTH	10,485

PACKER @ 5.282 BRAND & TYPE AS-3
 PLUG @ TYPE PLUG @ TYPE
 PLUG @ TYPE PLUG @ TYPE

COMPLETION & TEST DATA BY PRODUCING FORMATION
 359MSSP

FORMATION	Mississippian						
SPACING & SPACING ORDER NUMBER	640 618842						
CLASS: Oil, Gas, Dry, Inj. Disp, Comm Disp, Svc	GAS						
PERFORATED INTERVALS	5,715-10,346						
ACID/VOLUME	HCL ACID 9,000 GALS						
FRACTURE TREATMENT (Fluids/Prop Amounts)	FRAC FLUID 45.811 BBLS PROPPANT 437,600 LBS						

AS SUBMITTED

Reported to Frac Focus

Minimum Gas Allowable (165:10-17-7) OR Gas Purchaser/Measurer CHESAPEAKE OPERATING, L.L.C.
 Oil Allowable (165:10-13-3) 1st Sales Date 8/31/2016

INITIAL TEST DATE	9/15/2016			
OIL-BBL/DAY	92			
OIL-GRAVITY (API)				
GAS-MCF/DAY	1,777			
GAS-OIL RATIO CU FT/BBL	19,315			
WATER-BBL/DAY	1987			
PUMPING OR FLOWING	Artificial Lift			
INITIAL SHUT-IN PRESSURE				
CHOKE SIZE				
FLOW TUBING PRESSURE	221			

A record of the formations drilled through, and pertinent remarks are presented on the reverse. I declare that I have knowledge of the contents of this report and am authorized by my organization to make this report, which was prepared by me or under my supervision and direction, with the data and facts stated herein to be true, correct, and complete to the best of my knowledge and belief.

Sara Everett, Regulatory Analyst
 SIGNATURE NAME (PRINT OR TYPE) DATE 9/26/2016 PHONE NUMBER 405-848-8000
 P.O. BOX 18496 OKLAHOMA CITY OK 73154
 ADDRESS CITY STATE ZIP EMAIL ADDRESS sara.everett@chk.com

PLEASE TYPE OR USE BLACK INK ONLY
FORMATION RECORD

Give formation names and tops, if available, or descriptions and thickness of formations drilled through. Show intervals cored or drillstem tested.

LEASE NAME ARLENE 26-26-11

WELL NO. 1H

NAMES OF FORMATIONS	TOP
MISSISSIPPIAN	5,551

FOR COMMISSION USE ONLY

ITD on file YES NO

APPROVED _____ DISAPPROVED _____

2) Reject Codes _____

Were open hole logs run? yes no

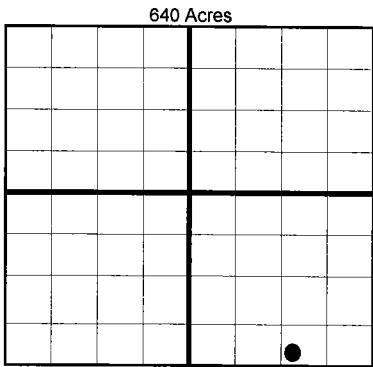
Late Last log was run N/A

Was CO₂ encountered? yes no at what depths?

Was H₂S encountered? yes no at what depths?

Were unusual drilling circumstances encountered? yes no
If yes, briefly explain.

Other remarks:



BOTTOM HOLE LOCATION FOR DIRECTIONAL HOLE

SEC	TWP	RGE	COUNTY				
Spot Location	1/4	1/4	1/4	1/4	Feet From 1/4 Sec Lines	FSL	FWL
Measured Total Depth	True Vertical Depth		BHL From Lease, Unit, or Property Line:				

BOTTOM HOLE LOCATION FOR HORIZONTAL HOLE: (LATERALS)

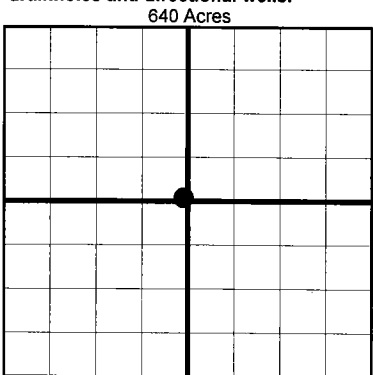
LATERAL #1

SEC	TWP	RGE	COUNTY				
26	26N	11W	ALFALFA				
Spot Location	SW 1/4	SW 1/4	SE 1/4	SE 1/4	Feet From 1/4 Sec Lines	FSL 181	FEL 1,102
Depth of Deviation	5,262	Radius of Turn	386	Direction	176	Total Length	4,934
Measured Total Depth	True Vertical Depth		BHL From Lease, Unit, or Property Line:				
	10,485	5,648	181				

If more than three drainholes are proposed, attach a separate sheet indicating the necessary information.

Direction must be stated in degrees azimuth. Please note, the horizontal drainhole and its end point must be located within the boundaries of the lease or spacing unit.

Directional surveys are required for all drainholes and directional wells.



LATERAL #2

SEC	TWP	RGE	COUNTY				
Spot Location	1/4	1/4	1/4	1/4	Feet From 1/4 Sec Lines	FSL	FWL
Depth of Deviation	Radius of Turn		Direction		Total Length		
Measured Total Depth	True Vertical Depth		BHL From Lease, Unit, or Property Line:				

LATERAL #3

SEC	TWP	RGE	COUNTY				
Spot Location	1/4	1/4	1/4	1/4	Feet From 1/4 Sec Lines	FSL	FWL
Depth of Deviation	Radius of Turn		Direction		Total Length		
Measured Total Depth	True Vertical Depth		BHL From Lease, Unit, or Property Line:				

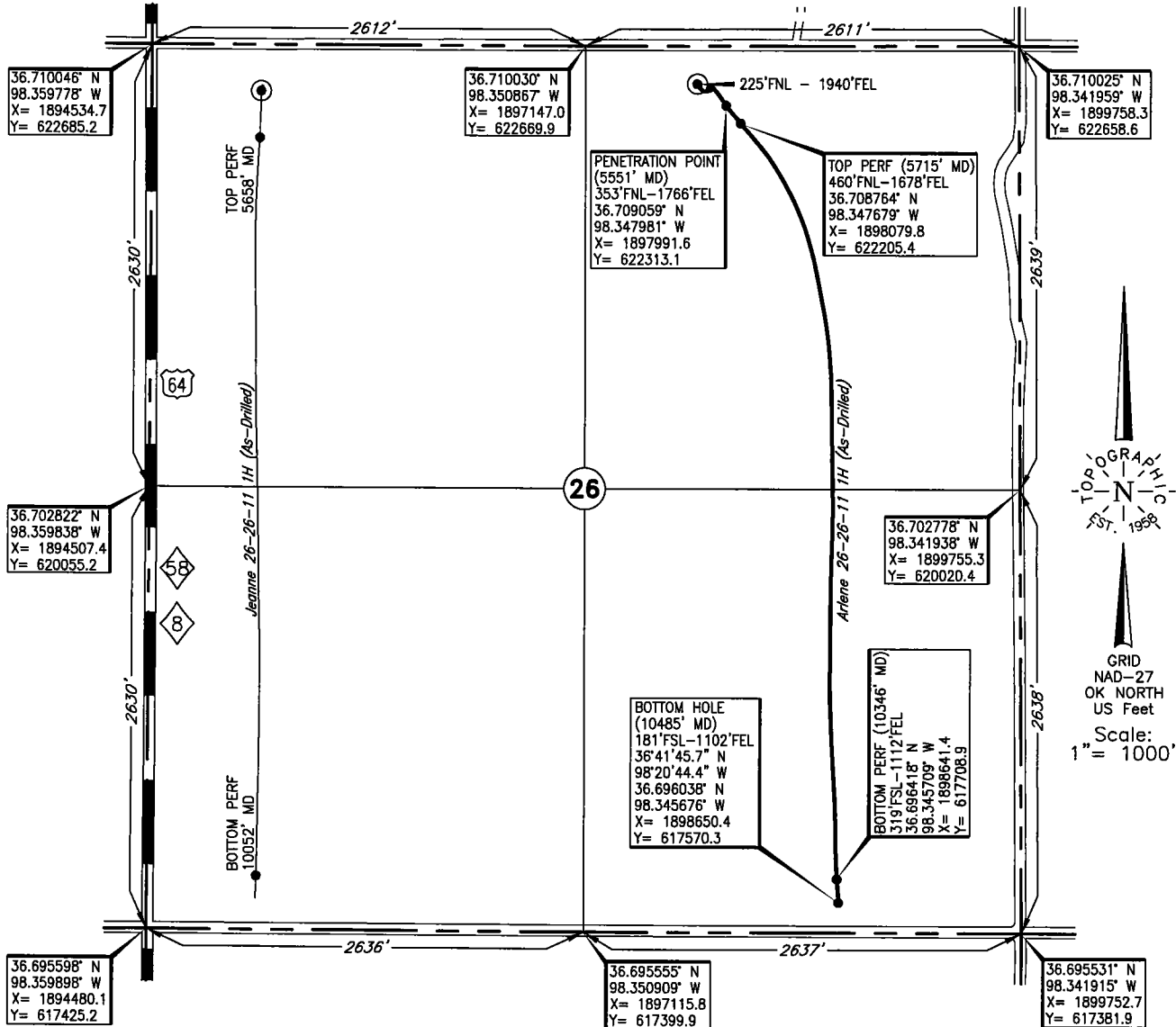
TOPOGRAPHIC LAND SURVEYORS OF OKLAHOMA

6709 NORTH CLASSEN BLVD., OKLA. CITY, OKLA. 73116 * LOCAL (405) 843-4847 * OUT OF STATE (800) 654-3219
 Certificate of Authorization No. 1293 LS.

ALFALFA

County, Oklahoma

225'FNL - 1940'FEL Section 26 Township 26N Range 11W I.M.



Operator: CHESAPEAKE OPERATING, INC.

Lease Name: ARLENE 26-26-11

Well No.: 1H

ELEVATION:
1180' Gr. at Level Pad

Topography & Vegetation Loc. fell on level pad, ±180' South of E-W pipeline

Good Drill Site? Yes Reference Stakes or Alternate Location
 Stakes Set None

Best Accessibility to Location From North off county road

Distance & Direction

from Hwy Jct or Town From Jct. US Hwy. 8 N-S and St. Hwy. 58 East, South of Cherokee, OK,

go ±3.0 mi. North on St. Hwy. 8, then ±1.0 mi. East to the NE Cor. of Sec. 26-T26N-R11W

This information was gathered with a GPS receiver with ±1 foot Horiz./Vert. accuracy.

DATUM: NAD-27
 LAT: 36°42'33.9" N
 LONG: 98°20'54.9" W
 LAT: 36.709411° N
 LONG: 98.348575° W
 STATE PLANE
 COORDINATES: (US Feet)
 ZONE: OK NORTH
 X: 1897818.0
 Y: 622442.0

264176 Date of Drawing: Aug. 18, 2016
 Invoice # 240160 Date Staked: Feb. 05, 2015 JP

FINAL AS-DRILLED PLAT

AS-DRILLED INFORMATION
 FURNISHED BY CHESAPEAKE OPERATING

API NO. 35-003-23185
 OTC PROD.
 UNIT NO. ~~003-210714~~

PLEASE TYPE OR USE BLACK INK ONLY
 NOTE: Attach copy of original 1002A if recompletion or reentry.

8/31/16
 OKLAHOMA CORPORATION COMMISSION
 Oil & Gas Conservation Division
 Post Office Box 52000
 Oklahoma City, Oklahoma 73152-2000
 Rule 165:10-3-25

RECEIVED 1002A
 7654965 72009

SEP 27 2016 1016EZ

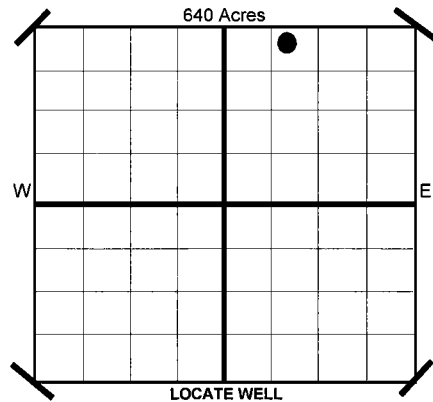
ORIGINAL
 AMENDED
 Reason Amended **Reclassify as Producing Well**

show completion
 003-217811 A=217811 S

COMPLETION REPORT

TYPE OF DRILLING OPERATION
 STRAIGHT HOLE DIRECTIONAL HOLE HORIZONTAL HOLE
 SERVICE WELL

SPUD DATE 4/23/2015
 DRLG FINISHED DATE 5/7/2015
 DATE OF WELL COMPLETION 8/12/2016
 1ST PROD DATE 8/31/2016
 RECOMP DATE
 Longitude (if Known)
 OTC/OCC OPERATOR NO. 17441



COUNTY ALFALFA SEC 26 TWP 26N RGE 11W
 LEASE NAME ARLENE 26-26-11 WELL NO 1H
 SHL NW 1/4 NE 1/4 NW 1/4 NE 1/4 225 1/4 SEC 1,940
 ELEVATION Derrick Fl 1,202 Ground 1,180
 OPERATOR NAME CHESAPEAKE OPERATING, L.L.C.
 ADDRESS P.O. BOX 18496
 CITY OKLAHOMA CITY STATE OK ZIP 73154

COMPLETION TYPE
 SINGLE ZONE
 MULTIPLE ZONE
 Application Date
 COMMINGLED
 Application Date
 LOCATION EXCEPTION ORDER NO. 637900 (INTERIM)
 INCREASED DENSITY ORDER NO. 637899

CASING & CEMENT (Form 1002C must be attached)

TYPE	SIZE	WEIGHT	GRADE	FEET	PSI	SAX	TOP
CONDUCTOR							
SURFACE	13 3/8"	48#	J-55	620		675	SURFACE
INTERMEDIATE	9 5/8"	36#	J-55	1,217		345	SURFACE
PRODUCTION	7"	26#	P-110EC	5,700		305	2,562
LINER	4 1/2"	11.6#	P-110	5,347-10,485		515	5,348
				TOTAL DEPTH		10,485	

PACKER @ 5.282 BRAND & TYPE AS-3 PLUG @ TYPE PLUG @ TYPE
 PACKER @ BRAND & TYPE PLUG @ TYPE PLUG @ TYPE

COMPLETION & TEST DATA BY PRODUCING FORMATION
 359MSSP

FORMATION	Mississippian								
SPACING & SPACING ORDER NUMBER	640 618842								
CLASS: Oil, Gas, Dry, Inj. Disp, Comm Disp, Svc	GAS								
PERFORATED INTERVALS	5,715-10,346								
ACID/VOLUME	HCL ACID 9,000 GALS								
FRACTURE TREATMENT (Fluids/Prop Amounts)	FRAC FLUID 45.811 BBLS PROPPANT 437,600 LBS								

Reported to Frac Focus

AS SUBMITTED

Minimum Gas Allowable (165:10-17-7) Gas Purchaser/Measurer CHESAPEAKE OPERATING, L.L.C.
 OR 1st Sales Date 8/31/2016

INITIAL TEST DATA

INITIAL TEST DATE	9/15/2016				
OIL-BBL/DAY	92				
OIL-GRAVITY (API)					
GAS-MCF/DAY	1,777				
GAS-OIL RATIO CU FT/BBL	19,315				
WATER-BBL/DAY	1987				
PUMPING OR FLOWING	Artificial Lift				
INITIAL SHUT-IN PRESSURE					
CHOKE SIZE					
FLOW TUBING PRESSURE	221				

A record of the formations drilled through, and pertinent remarks are presented on the reverse. I declare that I have knowledge of the contents of this report and am authorized by my organization to make this report, which was prepared by me or under my supervision and direction, with the data and facts stated herein to be true, correct, and complete to the best of my knowledge and belief.

Sara Everett
 SIGNATURE NAME (PRINT OR TYPE) Sara Everett, Regulatory Analyst
 P.O. BOX 18496 OKLAHOMA CITY OK 73154
 ADDRESS CITY STATE ZIP
 9/26/2016 405-848-8000
 DATE PHONE NUMBER
 sara.everett@chk.com
 EMAIL ADDRESS

CR

FORM 1004