

Oklahoma Corporation Commission  
Oil & Gas Conservation Division  
Post Office Box 52000  
Oklahoma City, Oklahoma 73152-2000  
Rule 165: 10-3-25

Form 1002A

API No.: 35073252690000

**Completion Report**

Spud Date: April 28, 2016

OTC Prod. Unit No.: 07321788300000

Drilling Finished Date: May 14, 2016

1st Prod Date: August 29, 2016

Completion Date: August 29, 2016

**Drill Type: HORIZONTAL HOLE**

Min Gas Allowable: Yes

Well Name: PRESERVE 27-16N-8W 1H

Purchaser/Measurer:

Location: KINGFISHER 27 16N 8W  
S2 SW SW SE  
300 FSL 2310 FEL of 1/4 SEC  
Derrick Elevation: 1126 Ground Elevation: 1096

First Sales Date: 8/29/2016

Operator: DEVON ENERGY PRODUCTION CO LP 20751

333 W SHERIDAN AVE  
OKLAHOMA CITY, OK 73102-5010

Completion Type	
X	Single Zone
	Multiple Zone
	Commingled

Location Exception	
Order No	
651732	

Increased Density	
Order No	
There are no Increased Density records to display.	

Casing and Cement							
Type	Size	Weight	Grade	Feet	PSI	SAX	Top of CMT
SURFACE	9 5/8	40#	HCK-55	1986		835	SURFACE
PRODUCTION	5 1/2	20#	P-110EC	13562		1630	3295

Liner								
Type	Size	Weight	Grade	Length	PSI	SAX	Top Depth	Bottom Depth
There are no Liner records to display.								

**Total Depth: 13562**

Packer	
Depth	Brand & Type
There are no Packer records to display.	

Plug	
Depth	Plug Type
13466	CEMENT

Initial Test Data										
Test Date	Formation	Oil BBL/Day	Oil-Gravity (API)	Gas MCF/Day	Gas-Oil Ratio Cu FT/BBL	Water BBL/Day	Pumpin or Flowing	Initial Shut-In Pressure	Choke Size	Flow Tubing Pressure
Sep 13, 2016	MISSISSIPPIAN (LESS CHESTER)	978		1534	1569	859	FLOWING	199	20/64	658

Completion and Test Data by Producing Formation										
Formation Name: MISSISSIPPIAN (LESS CHESTER)			Code: 359MSNLC			Class: OIL				
<b>Spacing Orders</b>				<b>Perforated Intervals</b>						
<b>Order No</b>		<b>Unit Size</b>		<b>From</b>			<b>To</b>			
641076		640		8650			13395			
<b>Acid Volumes</b>				<b>Fracture Treatments</b>						
There are no Acid Volume records to display.				275,236 BBLS FLUID						
				12,365,600 # SAND						

Formation	Top
MISSISSIPPIAN (LESS CHESTER)	8548

Were open hole logs run? No

Date last log run:

Were unusual drilling circumstances encountered? No

Explanation:

Other Remarks
IRREGULAR SECTION. OCC: FLE ORDER HAS NOT BEEN ISSUED. WE HAVE ACCEPTED OPERATORS DATA AS SUBMITTED. IRREGULAR SECTION.

**Lateral Holes**

Sec: 27 TWP: 16N RGE: 8W County: KINGFISHER

NE NW NW NE

32 FNL 2273 FEL of 1/4 SEC

Depth of Deviation: 8223 Radius of Turn: 410 Direction: 359 Total Length: 4929

Measured Total Depth: 13562 True Vertical Depth: 8587 End Pt. Location From Release, Unit or Property Line: 32

**FOR COMMISSION USE ONLY**

1134376

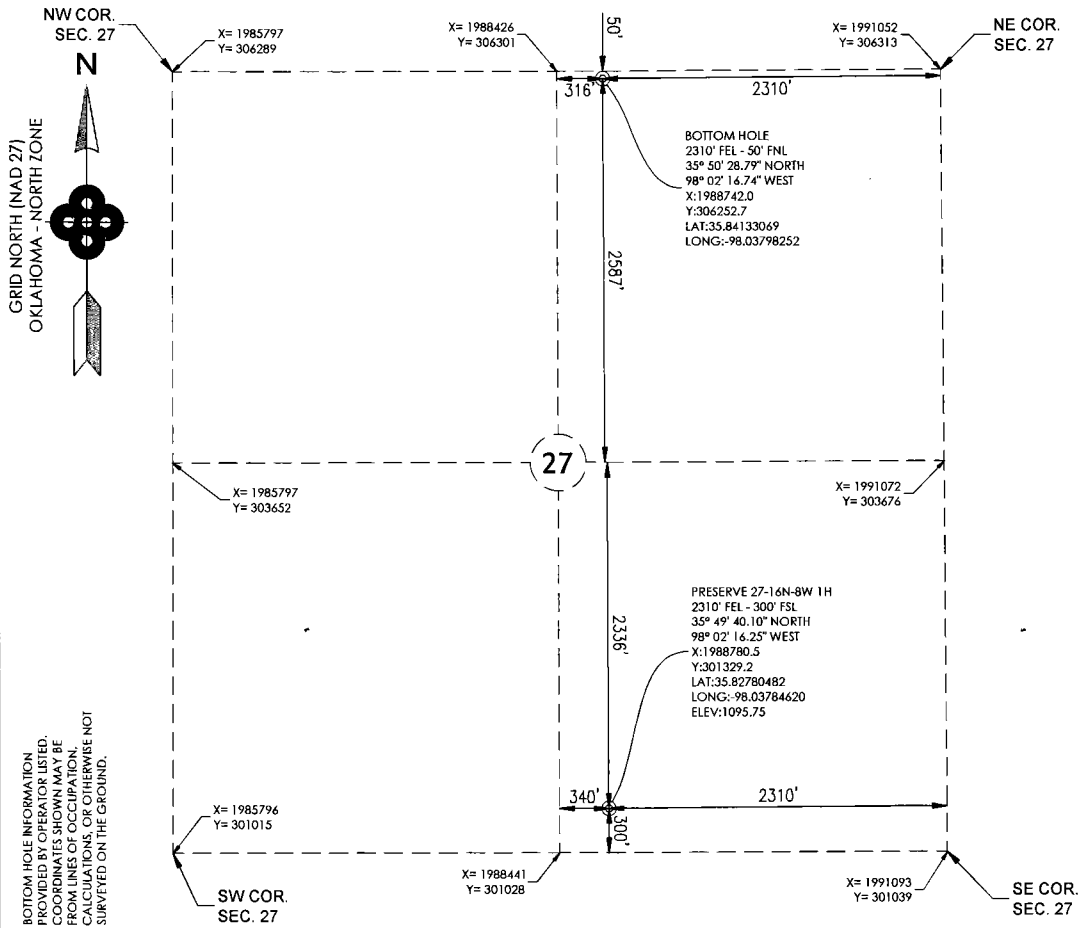
Status: Accepted



214 East Main  
Oklahoma City, OK 73104  
405.787.6270 f 405.787.6276 f  
www.craffontull.com  
**Craffon Tull**  
SURVEYING

API: 073-25269

KINGFISHER COUNTY, OKLAHOMA  
2310' FEL - 300' FSL SECTION 27 TOWNSHIP 16N RANGE 8W I.M.



OPERATOR: Devon Energy Production Company, L.P.

WELL NO: 1H

**ELEVATION:**  
1095.75' GR. AT STAKE

LEASE NAME: PRESERVE 27-16N-8W

TOPOGRAPHIC & VEGETATION: LOCATION FELL IN A FIELD

GOOD DRILL SITE: YES  
REFERENCE STAKES OR ALTERNATE LOCATION STAKES SET: NONE

BEST ACCESSIBILITY TO LOCATION: FROM SOUTH LINE

DISTANCE & DIRECTION FROM HWY JCT OR TOWN: AT THE JCT. OF US-81 AND OK-33, HEAD WEST 5.5M± TO N2790RD, HEAD SOUTH 2M± TO E0820RD, HEAD WEST 0.5±. SITE IS ON THE NORTH SIDE OF THE ROAD

(THE FOLLOWING INFORMATION WAS GATHERED USING A GPS RECEIVER ACCURACY ±2-3 METERS)

GPS DATUM:	STATE PLANE COORDINATES:	GPS DATUM:	STATE PLANE COORDINATES:
NAD27	OK-NORTH NAD27	NAD83	OK-NORTH NAD83
LAT: 35.82780482	X: 1988780.5	LAT: 35.82784808	X: 1957181.8
LONG: -98.03784620	Y: 301329.2	LONG: -98.03818024	Y: 301353.0

DATE STAKED: 3/17/2016

GENERAL NOTES:

THE TIES AND FOOTAGES SHOWN ON THIS PLAT ARE FROM LINES OF OCCUPATION FROM A SURVEY MADE ON THE GROUND AND / OR BEARING AND DISTANCES FROM THE GENERAL LAND OFFICE PLAT OF THE AREA SHOWN AND MAY NOT BE THE ACTUAL PROPERTY CORNERS. THIS PLAT DOES NOT REPRESENT A TRUE BOUNDARY SURVEY.



GRAPHIC SCALE IN FEET



REVISION	"PRESERVE 27-16N-8W 1H" PART OF THE SE/4 OF SECTION 27, T-16-N, R-8-W PROPOSED DRILL SITE KINGFISHER COUNTY, OKLAHOMA		
	SCALE: 1" = 1000'	DRAWN BY:	
	PLOT DATE: 03-21-2016	DW	SHEET NO.: 1 OF 6