

Oklahoma Corporation Commission  
Oil & Gas Conservation Division  
Post Office Box 52000  
Oklahoma City, Oklahoma 73152-2000  
Rule 165: 10-3-25

Form 1002A

API No.: 35073252150000

**Completion Report**

Spud Date: March 03, 2016

OTC Prod. Unit No.: 073-217661-0-0000

Drilling Finished Date: March 16, 2016

1st Prod Date: August 18, 2016

Completion Date: July 14, 2016

**Drill Type: HORIZONTAL HOLE**

Well Name: CLEVELAND 1805 2-26MH

Purchaser/Measurer:

Location: KINGFISHER 26 18N 5W  
SW SW SE SW  
208 FSL 1125 FEL of 1/4 SEC  
Latitude: 36.0008 Longitude: -97.70628  
Derrick Elevation: 0 Ground Elevation: 1127

First Sales Date:

Operator: OKLAHOMA ENERGY ACQUISITIONS LP 23509

15021 KATY FWY STE 400  
HOUSTON, TX 77094-1900

Completion Type	
X	Single Zone
	Multiple Zone
	Commingled

Location Exception
Order No
655607

Increased Density
Order No
There are no Increased Density records to display.

Casing and Cement							
Type	Size	Weight	Grade	Feet	PSI	SAX	Top of CMT
CONDUCTOR	16		X42	123		27	SURFACE
SURFACE	9 5/8	36	J55	449		300	SURFACE
INTERMEDIATE	7	26	P110	7056		280	4109

Liner								
Type	Size	Weight	Grade	Length	PSI	SAX	Top Depth	Bottom Depth
LINER	4 1/2	11.6	P110	4994	0	0	6922	11916

**Total Depth: 11917**

Packer	
Depth	Brand & Type
6880	ASIII

Plug	
Depth	Plug Type
There are no Plug records to display.	

Initial Test Data										
Test Date	Formation	Oil BBL/Day	Oil-Gravity (API)	Gas MCF/Day	Gas-Oil Ratio Cu FT/BBL	Water BBL/Day	Pumpin or Flowing	Initial Shut-In Pressure	Choke Size	Flow Tubing Pressure
Sep 16, 2016	MISS'AN (EX CHESTER)	402	39	431	1072	907	GAS LIFT		OPEN	148

Completion and Test Data by Producing Formation			
Formation Name: MISS'AN (EX CHESTER)		Code: 359MSNLC	Class: OIL
<b>Spacing Orders</b>		<b>Perforated Intervals</b>	
<b>Order No</b>	<b>Unit Size</b>	<b>From</b>	<b>To</b>
645699	640	There are no Perf. Intervals records to display.	
<b>Acid Volumes</b>		<b>Fracture Treatments</b>	
There are no Acid Volume records to display.		SEE FRAC FOCUS REPORT	

Formation	Top
COTTAGE GROVE	5484
HOGSHOOTER	5655
CHECKERBOARD	5764
CLEVELAND	5818
BIG LIME	5969
OSWEGO (4TH)	6098
PRUE	6176
VERDIGRIS	6197
SKINNER	6261
PINK LIME	6300
RED FORK	6323
INOLA	6372
MRMC	6401
MLM	6677

Were open hole logs run? No

Date last log run:

Were unusual drilling circumstances encountered? No

Explanation:

Other Remarks
THIS WELL IS AN OPEN HOLE COMPLETION FROM THE BOTTOM OF THE 7" CASING AT 7056' TO TERMINUS AT 11,917'. THE 4 1/2" LINER IS NOT CEMENTED. IRREGULAR SECTION.

**Lateral Holes**

Sec: 26 TWP: 18N RGE: 5W County: KINGFISHER

NE NE NW NW

205 FNL 1127 FWL of 1/4 SEC

Depth of Deviation: 6427 Radius of Turn: 533 Direction: 359 Total Length: 4633

Measured Total Depth: 11917 True Vertical Depth: 6825 End Pt. Location From Release, Unit or Property Line: 205

**FOR COMMISSION USE ONLY**

1134362

Status: Accepted

API



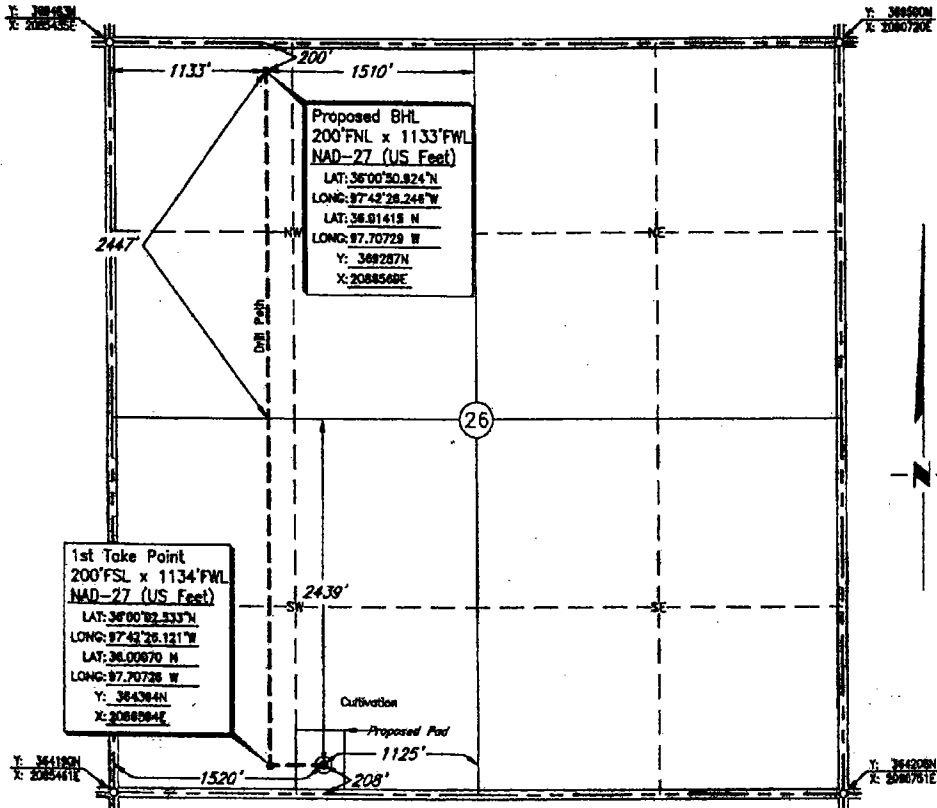
**CIMARRON**  
SURVEYING & MAPPING CO.

Oklahoma City, OK  
(405) 692-7748  
CIMSURVEY.COM

C.A. No. 1780 Expires June 30, 2016

KINGFISHER County, Oklahoma

208'FSL - 1520'FWL Section 26 Township 18N Range 5W I.M.



Scale: 1" = 1000'

Date Staked: October 12, 2015

GPS Observation: Latitude 36°00'02.609" N  
Longitude 97°42'21.427" W  
Latitude 36.00072 N  
Longitude 97.70595 W

State Plane NAD27 Y: 364403N  
Oklahoma North Zone: X: 2086980E

Operator: OKLAHOMA ENERGY ACQUISITIONS, LP Elevation: 1127'

Lease Name: CLEVELAND 1805 Well No.: 2-26MH

Topography & Vegetation: Cultivation

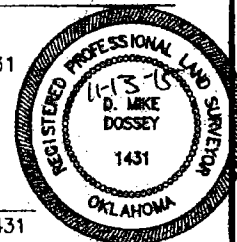
Alternate Location Stakes Set: No Good Drill Site? Yes

Best Accessibility to Location: From the South Line

Distance & Direction  
from Hwy Jct or Town: From the town of Dover; Thence north approx. 1 1/2 miles along  
U.S. Hwy. 81; Thence east 11 miles to the Southwest Corner of Section 26.

**SURVEYOR'S CERTIFICATE:**

I, D. MIKE DOSSEY, Registered Professional Land Surveyor, No. 1431 do hereby certify that the above described well location was carefully staked on the ground as shown and that all ties and distances shown are from existing lines of occupation.



JOB NO.:	1514218A				
DATE:	10/13/15				
DRAWN BY:	N.J.S.	NO.	REVISION	DATE	BY

*D. Mike Dossey*  
D. MIKE DOSSEY R.P.L.S. # 1431