

Oklahoma Corporation Commission  
Oil & Gas Conservation Division  
Post Office Box 52000  
Oklahoma City, Oklahoma 73152-2000  
Rule 165: 10-3-25

Form 1002A

API No.: 35073252980000

**Completion Report**

Spud Date: June 16, 2016

OTC Prod. Unit No.: 073-217760-0-0000

Drilling Finished Date: July 02, 2016

1st Prod Date: August 13, 2016

Completion Date: August 05, 2016

**Drill Type: HORIZONTAL HOLE**

Well Name: EVELYN 1706 5-18MH

Purchaser/Measurer:

Location: KINGFISHER 7 17N 6W  
NE SE SW SE  
400 FSL 1464 FEL of 1/4 SEC  
Latitude: 35.95758 Longitude: -97.87687  
Derrick Elevation: 0 Ground Elevation: 1020

First Sales Date:

Operator: OKLAHOMA ENERGY ACQUISITIONS LP 23509

15021 KATY FWY STE 400  
HOUSTON, TX 77094-1900

Completion Type	
X	Single Zone
	Multiple Zone
	Commingled

Location Exception
Order No
652436

Increased Density
Order No
There are no Increased Density records to display.

Casing and Cement							
Type	Size	Weight	Grade	Feet	PSI	SAX	Top of CMT
CONDUCTOR	16		X42	125		27	SURFACE
SURFACE	9 5/8	36	J55	480		300	SURFACE
INTERMEDIATE	7	26	P110	7945		280	4996

Liner								
Type	Size	Weight	Grade	Length	PSI	SAX	Top Depth	Bottom Depth
LINER	4 1/2	13.5	P110	5225	0	0	7582	12807

**Total Depth: 12808**

Packer	
Depth	Brand & Type
7535	ASIII

Plug	
Depth	Plug Type
There are no Plug records to display.	

Initial Test Data										
Test Date	Formation	Oil BBL/Day	Oil-Gravity (API)	Gas MCF/Day	Gas-Oil Ratio Cu FT/BBL	Water BBL/Day	Pumpin or Flowing	Initial Shut-In Pressure	Choke Size	Flow Tubing Pressure
Sep 11, 2016	MISS'AN (EX CHESTER)	787	39	1222	1553	686	GAS LIFT		OPEN	155

Completion and Test Data by Producing Formation										
Formation Name: MISS'AN (EX CHESTER)			Code: 359MSNLC			Class: OIL				
<b>Spacing Orders</b>					<b>Perforated Intervals</b>					
<b>Order No</b>		<b>Unit Size</b>			<b>From</b>			<b>To</b>		
651170		640			There are no Perf. Intervals records to display.					
<b>Acid Volumes</b>					<b>Fracture Treatments</b>					
4519 BBLs HCL					267,858 BBLs SW; 3,335,265 LBS SAND					

Formation	Top
BIG LIME	6436
OSWEGO (4TH)	6583
PRUE	6664
VERDIGRIS	6691
SKINNER	6760
PINK LIME	6815
RED FORK	6860
INOLA	6903
MANNING	6952
MERAMEC	7156
MLM	7470

Were open hole logs run? No

Date last log run:

Were unusual drilling circumstances encountered? No

Explanation:

Other Remarks
THIS WELL IS AN OPEN HOLE COMPLETION FROM THE BOTTOM OF THE 7" CASING AT 7945' TO TERMINUS AT 12,808'. THE 4 1/2" LINER IS NOT CEMENTED. OCC: FLE ORDER HAS NOT BEEN ISSUED. WE HAVE ACCEPTED OPERATORS DATA AS SUBMITTED. IRREGULAR SECTION.

**Lateral Holes**

Sec: 18 TWP: 17N RGE: 6W County: KINGFISHER

SW SE SW SE

212 FSL 1881 FEL of 1/4 SEC

Depth of Deviation: 7172 Radius of Turn: 1011 Direction: 178 Total Length: 4349

Measured Total Depth: 12808 True Vertical Depth: 7622 End Pt. Location From Release, Unit or Property Line: 212

**FOR COMMISSION USE ONLY**

1134356

Status: Accepted



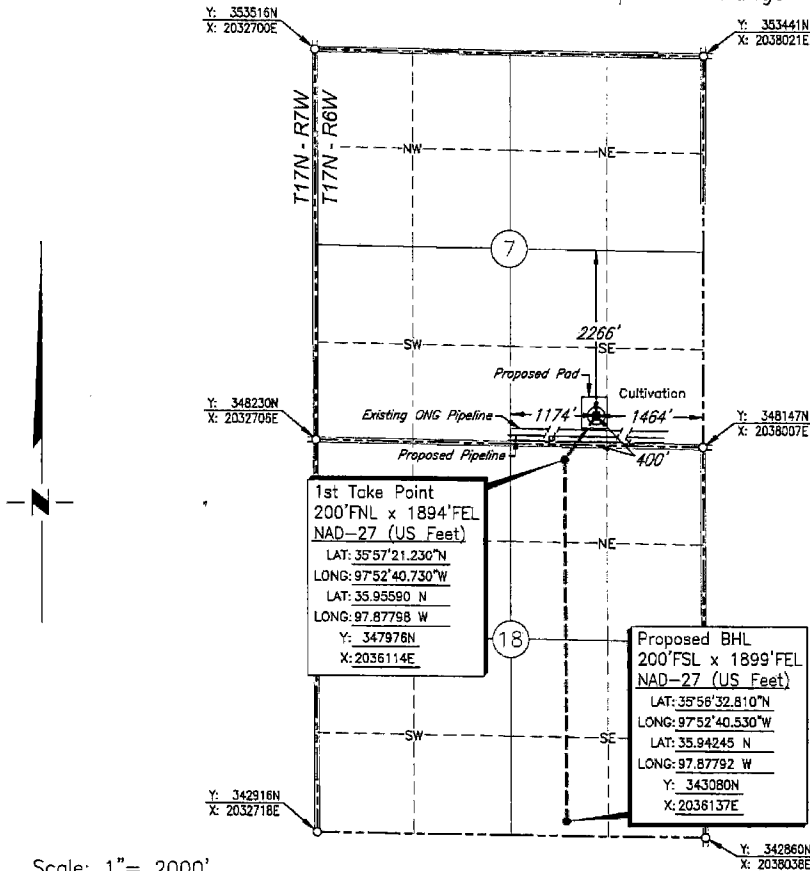
**CIMARRON**  
SURVEYING & MAPPING CO.

Oklahoma City, OK  
(405) 692-7348  
CIMSURVEY.COM

C.A. No. 1780 Expires June 30, 2016

KINGFISHER County, Oklahoma

400' FSL - 1464' FEL Section 7 Township 17N Range 6W I.M.



Scale: 1" = 2000'

Date Staked: April 1, 2016

GPS Observation: Latitude 35°57'27.097" N  
Longitude 97°52'35.491" W  
Latitude 35.95753 N  
Longitude 97.87653 W

State Plane NAD27 Y: 348570N  
Oklahoma North Zone: X: 2036544E

Operator: OKLAHOMA ENERGY ACQUISITIONS, LP Elevation: 1020'

Lease Name: Evelyn 1706 Well No.: 5-18MH

Topography & Vegetation: Cultivation

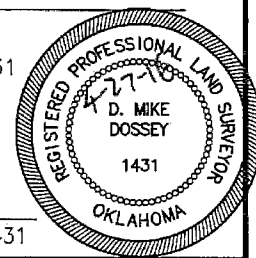
Alternate Location Stakes Set: No Good Drill Site? Yes

Best Accessibility to Location: From the South Line

Distance & Direction  
from Hwy Jct or Town: From the town of Dover; Thence south along U.S. Hwy. 81  
approx. 1¼ miles; Thence east approx. 2½ miles to the Southeast Corner of Section 7.

**SURVEYOR'S CERTIFICATE:**

I, D. MIKE DOSSEY, Registered Professional Land Surveyor, No. 1431 do hereby certify that the above described well location was carefully staked on the ground as shown and that all ties and distances shown are from existing lines of occupation.



JOB NO.:	161470B			
DATE:	04/06/16			
DRAWN BY:	T.A.W.	NO.	REVISION	DATE BY

*D. Mike Dossey*  
D. MIKE DOSSEY R.P.L.S. # 1431