

Oklahoma Corporation Commission
 Oil & Gas Conservation Division
 Post Office Box 52000
 Oklahoma City, Oklahoma 73152-2000
 Rule 165: 10-3-25

Form 1002A

API No.: 35081242590000

Completion Report

Spud Date: April 12, 2016

OTC Prod. Unit No.: 081-217591-0-0000

Drilling Finished Date: April 18, 2016

1st Prod Date: August 24, 2016

Completion Date: August 24, 2016

Drill Type: HORIZONTAL HOLE

Min Gas Allowable: Yes

Well Name: TRUITT 20-16N-4E 2MH

Purchaser/Measurer: TALL OAK (#23587)

Location: LINCOLN 20 16N 4E
 NE NE NW NW
 248 FNL 1162 FWL of 1/4 SEC
 Derrick Elevation: 1036 Ground Elevation: 1013

First Sales Date: 08/24/2016

Operator: WHITE STAR PETROLEUM LLC 23358
 PO BOX 13360
 301 NW 63RD ST STE 600
 OKLAHOMA CITY, OK 73113-1360

Completion Type	
X	Single Zone
	Multiple Zone
	Commingled

Location Exception
Order No
651568

Increased Density
Order No
651746

Casing and Cement							
Type	Size	Weight	Grade	Feet	PSI	SAX	Top of CMT
SURFACE	9-5/8"	36#	J-55	631		255	SURFACE
PRODUCTION	5-1/2"	17#	HCP-110	9015		855	4322

Liner								
Type	Size	Weight	Grade	Length	PSI	SAX	Top Depth	Bottom Depth
There are no Liner records to display.								

Total Depth: 9015

Packer	
Depth	Brand & Type
There are no Packer records to display.	

Plug	
Depth	Plug Type
8901	FRAC PLUG

Initial Test Data										
Test Date	Formation	Oil BBL/Day	Oil-Gravity (API)	Gas MCF/Day	Gas-Oil Ratio Cu FT/BBL	Water BBL/Day	Pumpin or Flowing	Initial Shut-In Pressure	Choke Size	Flow Tubing Pressure
Sep 18, 2016	MISSISSIPPIAN	29		154	5310	689	PUMPING			

Completion and Test Data by Producing Formation										
Formation Name: MISSISSIPPIAN			Code: 359MSSP			Class: OIL				
Spacing Orders				Perforated Intervals						
Order No	Unit Size			From			To			
651310	640			5046			8881			
Acid Volumes				Fracture Treatments						
1370 BLS ACID				96,269 BLS WATER						
				3,592,010 LBS SAND						

Formation	Top
MISSISSIPPIAN	4382

Were open hole logs run? No

Date last log run:

Were unusual drilling circumstances encountered? No

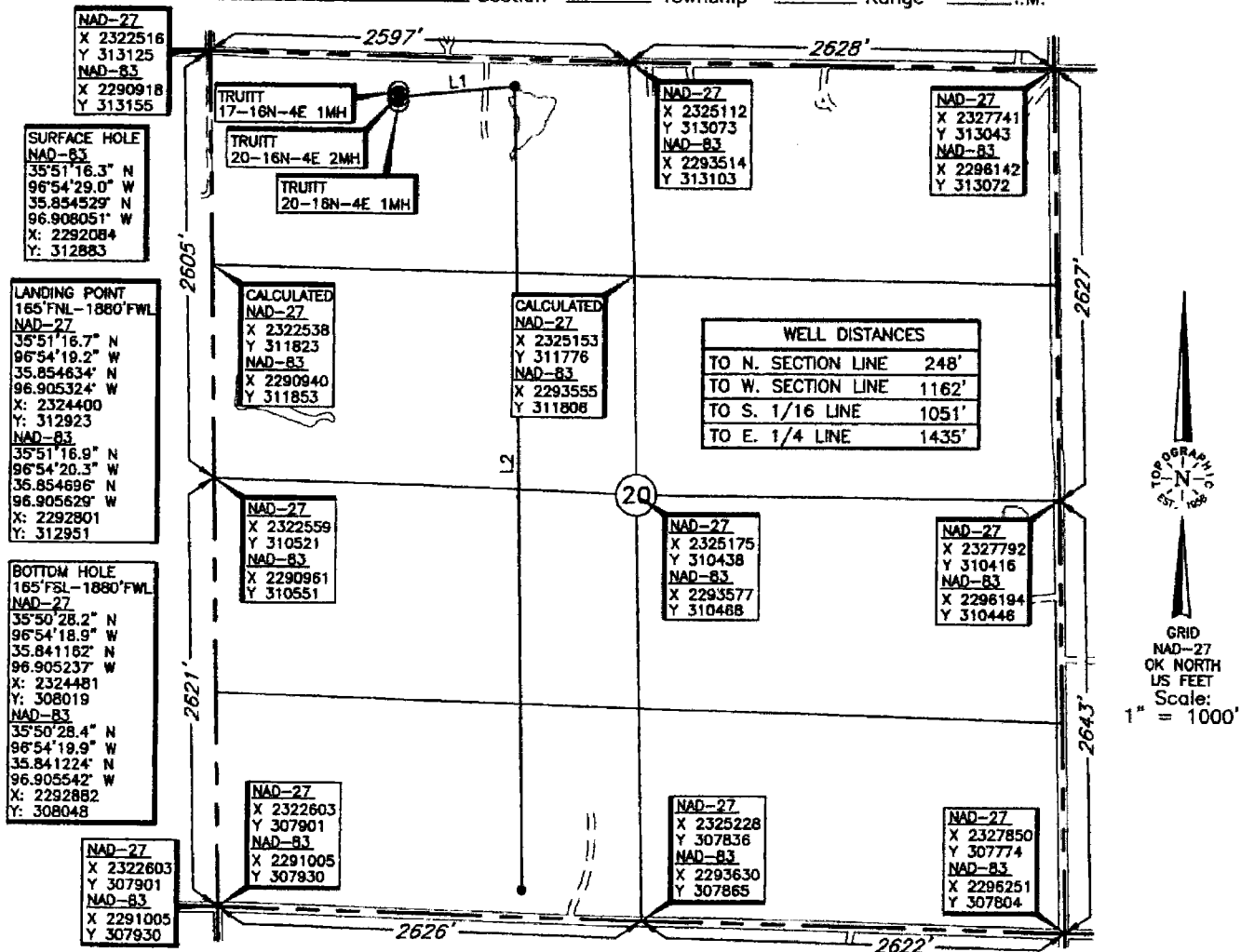
Explanation:

Other Remarks
OCC: FLE ORDER HAS NOT BEEN ISSUED. WE HAVE ACCEPTED OPERATORS DATA AS SUBMITTED. IRREGULAR SECTION.

Lateral Holes
Sec: 20 TWP: 16N RGE: 4E County: LINCOLN
NE SW SE SW
384 FSL 1863 FWL of 1/4 SEC
Depth of Deviation: 3734 Radius of Turn: 1353 Direction: 181 Total Length: 3928
Measured Total Depth: 9015 True Vertical Depth: 4530 End Pt. Location From Release, Unit or Property Line: 384

FOR COMMISSION USE ONLY
Status: Accepted
1134351

LINCOLN County, Oklahoma
 248' FNL - 1162' FWL Section 20 Township 16N Range 4E I.M.



BOTTOM HOLE, LANDING POINT AND DRILL PATH INFORMATION PROVIDED BY OPERATOR LISTED, NOT SURVEYED.

PROPOSED DRILL PATH	
LINE	DISTANCE
L1	720'
L2	4904'

THE INFORMATION SHOWN HEREIN IS FOR CONSTRUCTION PURPOSES ONLY

Operator: AMERICAN ENERGY - WOODFORD, LLC
 Lease Name: TRUITT 20-16N-4E Well No.: 2MH **ELEVATION:** 1013' Gr. at Stake

Topography & Vegetation Loc. fell in open grass land
 Good Drill Site? Yes Reference Stakes or Alternate Location Stakes Set None
 Best Accessibility to Location From North off county road
 Distance & Direction From the junction of St. Hwy 105 E-W & St. Hwy 18 N-S, go ± 2 miles West on St. Hwy 105, then ± 1 mile South to the Northwest Corner of Section 20, T16N-R4E.

This information was gathered with a GPS receiver with ±1 foot horiz./vert. accuracy

DATUM: NAD-27
 LAT: 35°51'16.1" N
 LONG: 96°54'27.9" W
 STATE PLANE COORDINATES (US FEET):
 ZONE: OK NORTH
 X: 2323683
 Y: 312854

Revision A Date of Drawing: Feb. 8, 2016
 Invoice # 255967A Date Staked: Feb. 1, 2016 NMB

CERTIFICATE:
 I, Thomas L. Howell an Oklahoma Licensed Land Surveyor and an authorized agent of Topographic Land Surveyors of Oklahoma, do hereby certify to the information shown herein.
Thomas L. Howell
 Oklahoma Reg. No. 1433

