

Oklahoma Corporation Commission
Oil & Gas Conservation Division
Post Office Box 52000
Oklahoma City, Oklahoma 73152-2000
Rule 165: 10-3-25

Form 1002A

API No.: 35003231080001

Completion Report

Spud Date: December 07, 2014

OTC Prod. Unit No.: 003-217785

Drilling Finished Date: January 29, 2015

1st Prod Date: August 19, 2016

Amended

Completion Date: July 24, 2016

Amend Reason: SHOW COMPLETION

Drill Type: HORIZONTAL HOLE

Min Gas Allowable: Yes

Well Name: MORGAN FAMILY 2-27-11 1H

Purchaser/Measurer: CHESAPEAKE OPERATING LLC

Location: ALFALFA 2 27N 11W
SW SE SE SW
261 FSL 2018 FWL of 1/4 SEC
Derrick Elevation: 1202 Ground Elevation: 1180

First Sales Date: 08/19/2016

Operator: CHESAPEAKE OPERATING LLC 17441
PO BOX 18496
6100 N WESTERN AVE
OKLAHOMA CITY, OK 73154-0496

Completion Type	
X	Single Zone
	Multiple Zone
	Commingled

Location Exception
Order No
629602

Increased Density
Order No
629601

Casing and Cement							
Type	Size	Weight	Grade	Feet	PSI	SAX	Top of CMT
SURFACE	13 3/8	48	J-55	415		265	SURFACE
INTERMEDIATE	9 5/8	36	J-55	1205		305	SURFACE
PRODUCTION	7	26	P-110EC	5440		260	3000

Liner								
Type	Size	Weight	Grade	Length	PSI	SAX	Top Depth	Bottom Depth
LINER	4 1/2	11.60	P-110EC	4699	0	535	5324	10023

Total Depth: 10023

Packer	
Depth	Brand & Type
5215	AS-3

Plug	
Depth	Plug Type
There are no Plug records to display.	

Initial Test Data										
Test Date	Formation	Oil BBL/Day	Oil-Gravity (API)	Gas MCF/Day	Gas-Oil Ratio Cu FT/BBL	Water BBL/Day	Pumpin or Flowing	Initial Shut-In Pressure	Choke Size	Flow Tubing Pressure
Aug 28, 2016	MISSISSIPPIAN	197		1147	5822	2090	ARTIFICIA			159

Completion and Test Data by Producing Formation										
Formation Name: MISSISSIPPIAN			Code: 359MSSP			Class: OIL				
Spacing Orders				Perforated Intervals						
Order No	Unit Size			From			To			
615585	640			5360			9886			
Acid Volumes				Fracture Treatments						
8,000 GALLONS HCL ACID				39,884 BARRELS FRAC FLUID, 381,480 POUNDS PROPPANT						

Formation	Top
MISSISSIPPIAN	5267

Were open hole logs run? No

Date last log run:

Were unusual drilling circumstances encountered? No

Explanation:

Other Remarks
OCC - THIS DOCUMENT IS ACCEPTED BASED ON THE DATA SUBMITTED THE FINAL LOCATION EXCEPTION HAS NOT BEEN SUBMITTED.

Lateral Holes
Sec: 2 TWP: 27N RGE: 11W County: ALFALFA
NW NE NW NW
318 FNL 877 FWL of 1/4 SEC
Depth of Deviation: 4909 Radius of Turn: 271 Direction: 359 Total Length: 4756
Measured Total Depth: 10023 True Vertical Depth: 5180 End Pt. Location From Release, Unit or Property Line: 318

FOR COMMISSION USE ONLY
Status: Accepted
1134350

API NO. 35-003-23108
OTC PROD.
UNIT NO. 003-217785

PLEASE TYPE OR USE BLACK INK ONLY
NOTE: Attach copy of original 1002A if recompletion or reentry.

OKLAHOMA CORPORATION COMMISSION
Oil & Gas Conservation Division
Post Office Box 52000
Oklahoma City, Oklahoma 73152-2000
Rule 165:10-3-25

RECEIVED
Form 1002A
Rev. 2009

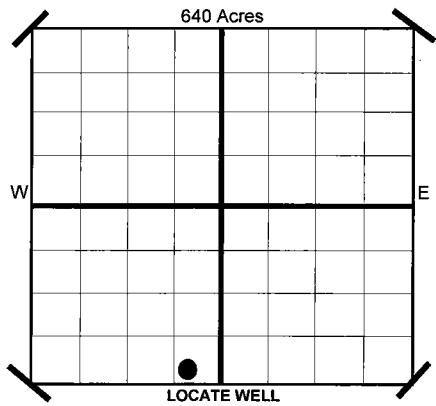
SEP 02 2016

ORIGINAL AMENDED
Reason Amended *show completion*
Reclassify as Producing Well

COMPLETION REPORT

TYPE OF DRILLING OPERATION
 STRAIGHT HOLE DIRECTIONAL HOLE HORIZONTAL HOLE
SERVICE WELL
If directional or horizontal, see reverse for bottom hole location.

SPUD DATE 12/7/2014
DRLG FINISHED DATE 1/29/2015
DATE OF WELL COMPLETION 7/24/2016
1ST PROD DATE 8/19/2016
RECOMP DATE
Longitude (if Known)



COUNTY ALFALFA SEC 2 TWP 27N RGE 11W
LEASE NAME MORGAN FAMILY 2-27-11
WELL NO 1H
SHL SW 1/4 SE 1/4 SE 1/4 SW 1/4 FSL 261 FWL OF 1/4 SEC 2,018
ELEVATION Derrick Fl 1,202 Ground 1,180
Latitude (if Known)
OPERATOR NAME CHESAPEAKE OPERATING, L.L.C. OTC/OCC OPERATOR NO. 17441
ADDRESS P.O. BOX 18496
CITY OKLAHOMA CITY STATE OK ZIP 73154

COMPLETION TYPE

SINGLE ZONE
 MULTIPLE ZONE
Application Date
 COMMINGLED
Application Date
LOCATION EXCEPTION ORDER NO. 629602 (INTERIM)
INCREASED DENSITY ORDER NO. 629601

CASING & CEMENT (Form 1002C must be attached)

TYPE	SIZE	WEIGHT	GRADE	FEET	PSI	SAX	TOP
CONDUCTOR							
SURFACE	13 3/8'	48#	J-55	415		265	SURFACE
INTERMEDIATE	9 5/8"	36#	J-55	1,205		305	SURFACE
PRODUCTION	7"	26#	P-110EC	5,440		260	3,000
LINER	4 1/2"	11.60#	P-110EC	5,324-10,023		535	5,324

PACKER @ 5.215 BRAND & TYPE AS-3 PLUG @ TYPE PLUG @ TYPE TOTAL DEPTH 10,023
PACKER @ BRAND & TYPE PLUG @ TYPE PLUG @ TYPE

COMPLETION & TEST DATA BY PRODUCING FORMATION

359MSSP

FORMATION	MISSISSIPPIAN							<i>Reported to Frac Focus</i>
SPACING & SPACING ORDER NUMBER	640 615585							
CLASS: Oil, Gas, Dry, Inj, Disp, Comm Disp, Svc	OIL							
PERFORATED INTERVALS	5,360-9,886							
ACID/VOLUME	HCL ACID 8,000 GALS FRAC FLUID 39,884 BBLs PROPPANT 381,480 LBS							
FRACTURE TREATMENT (Fluids/Prop Amounts)								

Minimum Gas Allowable (165:10-17-7) Gas Purchaser/Measurer Chesapeake Operating, L.L.C.
OR 1st Sales Date 8/19/2016
 Oil Allowable (165:10-13-3)

INITIAL TEST DATA

INITIAL TEST DATE	8/28/2016							
OIL-BBL/DAY	197							
OIL-GRAVITY (API)								
GAS-MCF/DAY	1,147							
GAS-OIL RATIO CU FT/BBL	5,822							
WATER-BBL/DAY	2090							
PUMPING OR FLOWING	Artificial Lift							
INITIAL SHUT-IN PRESSURE								
CHOKE SIZE								
FLOW TUBING PRESSURE	159							



A record of the formations drilled through, and pertinent remarks are presented on the reverse. I declare that I have knowledge of the contents of this report and am authorized by my organization to make this report, which was prepared by me or under my supervision and direction, with the data and facts stated herein to be true, correct, and complete to the best of my knowledge and belief.

Sara Everett SIGNATURE Sara Everett, Regulatory Analyst NAME (PRINT OR TYPE) 9/1/2016 DATE 405-848-8000 PHONE NUMBER
P.O. BOX 18496 OKLAHOMA CITY OK 73154 ADDRESS CITY STATE ZIP sara.everett@chk.com EMAIL ADDRESS

PLEASE TYPE OR USE BLACK INK ONLY
FORMATION RECORD

Give formation names and tops, if available, or descriptions and thickness of formations drilled through. Show intervals cored or drillstem tested.

LEASE NAME MORGAN FAMILY 2-27-11

WELL NO. 1H

NAMES OF FORMATIONS	TOP
MISSISSIPPIAN	5,267

FOR COMMISSION USE ONLY

ITD on file YES NO

APPROVED _____ DISAPPROVED _____

2) Reject Codes

Were open hole logs run? _____ yes no

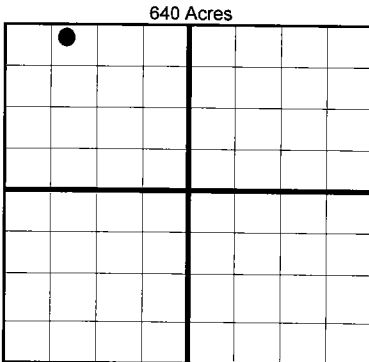
Date Last log was run N/A

Was CO₂ encountered? _____ yes no at what depths?

Was H₂S encountered? _____ yes no at what depths?

Were unusual drilling circumstances encountered? _____ yes no
If yes, briefly explain.

Other remarks:



BOTTOM HOLE LOCATION FOR DIRECTIONAL HOLE

SEC	TWP	RGE	COUNTY							
Spot Location				1/4	1/4	1/4	1/4	Feet From 1/4 Sec Lines	FSL	FWL
Measured Total Depth				True Vertical Depth		BHL From Lease, Unit, or Property Line:				

BOTTOM HOLE LOCATION FOR HORIZONTAL HOLE: (LATERALS)

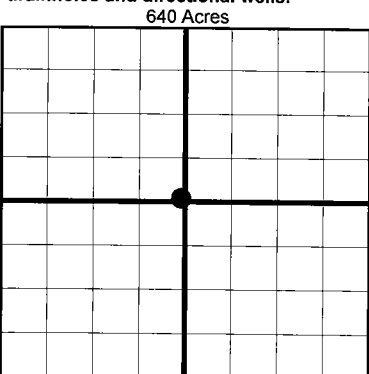
LATERAL #1

SEC	TWP	RGE	COUNTY							
2	27N	11W		ALFALFA						
Spot Location				NW 1/4	NE 1/4	NW 1/4	NW 1/4	Feet From 1/4 Sec Lines	FNL 318	FWL 877
Depth of Deviation				4,909		Radius of Turn 271		Direction 359		Total Length 4,756
Measured Total Depth				10,023		True Vertical Depth 5,180		BHL From Lease, Unit, or Property Line: 318		

If more than three drainholes are proposed, attach a separate sheet indicating the necessary information.

Direction must be stated in degrees azimuth. Please note, the horizontal drainhole and its end point must be located within the boundaries of the lease or spacing unit.

Directional surveys are required for all drainholes and directional wells.



LATERAL #2

SEC	TWP	RGE	COUNTY							
Spot Location				1/4	1/4	1/4	1/4	Feet From 1/4 Sec Lines	FSL	FWL
Depth of Deviation				Radius of Turn		Direction		Total Length		
Measured Total Depth				True Vertical Depth		BHL From Lease, Unit, or Property Line:				

LATERAL #3

SEC	TWP	RGE	COUNTY							
Spot Location				1/4	1/4	1/4	1/4	Feet From 1/4 Sec Lines	FSL	FWL
Depth of Deviation				Radius of Turn		Direction		Total Length		
Measured Total Depth				True Vertical Depth		BHL From Lease, Unit, or Property Line:				

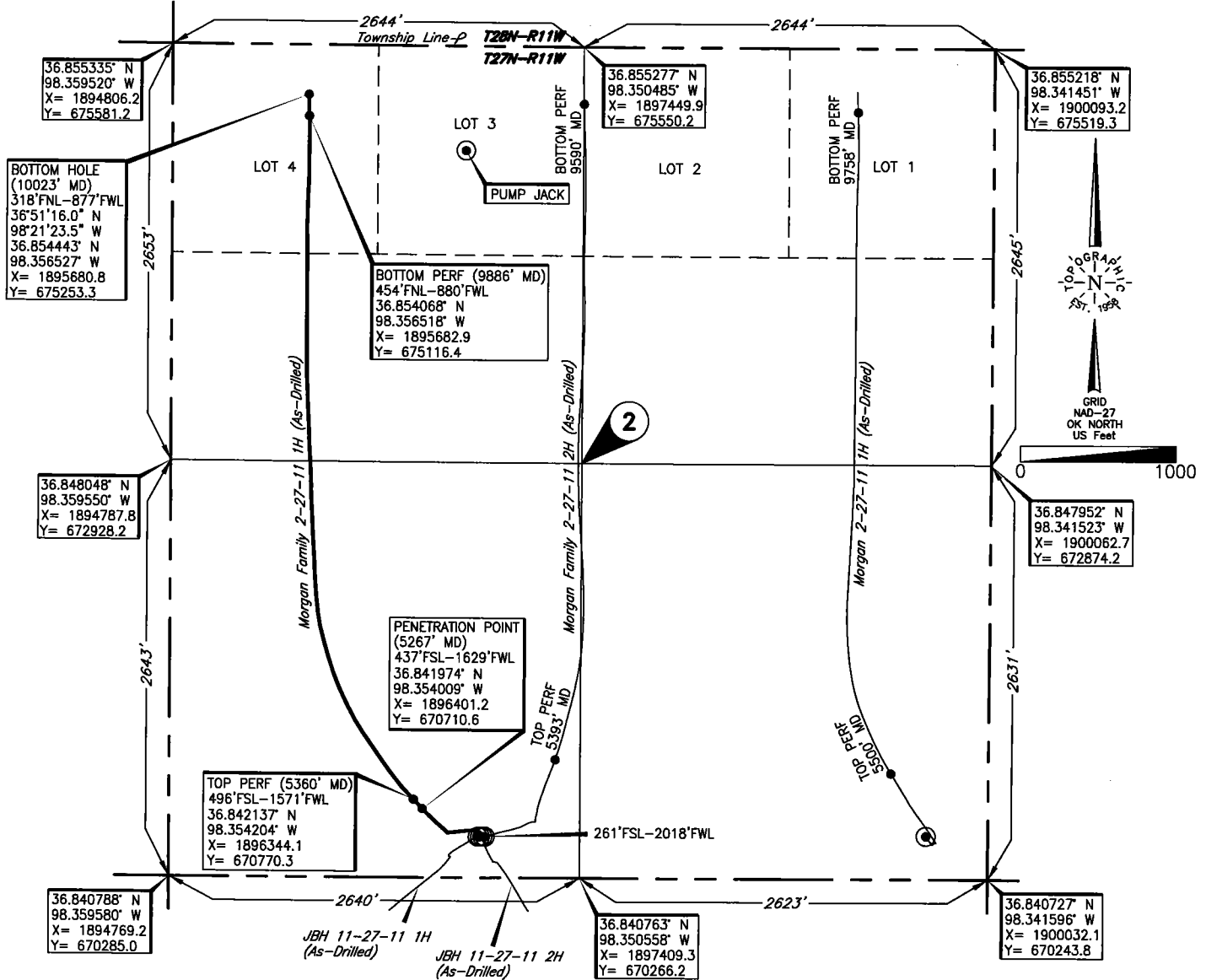
TOPOGRAPHIC LAND SURVEYORS OF OKLAHOMA

6709 NORTH CLASSEN BLVD., OKLA. CITY, OKLA. 73116 * LOCAL (405) 843-4847 * OUT OF STATE (800) 654-3219
 Certificate of Authorization No. 1293 LS

ALFALFA

County, Oklahoma

261'FSL-2018'FWL Section 2 Township 27N Range 11W I.M.



Operator: CHESAPEAKE OPERATING, L.L.C.
 Lease Name: MORGAN FAMILY 2-27-11 Well No.: 1H **ELEVATION:** 1180' Gr. at Level Pad
 Topography & Vegetation Loc. fell on level pad, ±140' North of E-W pipeline, ±185' North of E-W pipeline, ±239' East of N-S pipeline, ±280' East of N-S pipeline
 Good Drill Site? Yes Reference Stakes or Alternate Location Stakes Set None
 Best Accessibility to Location From South off county road
 Distance & Direction From the Jct. of US. Hwy. 64 W-S and St. Hwy. 11 E-N, go ±3 miles North on St. Hwy. 11 to the SW Cor. of Sec. 2-T27N-R11W

This information was gathered with a GPS receiver with ±1 foot Horiz./Vert. accuracy.

DATUM: NAD-27
 LAT: 36°50'29.3"N
 LONG: 98°21'09.7"W
 LAT: 36.841485° N
 LONG: 98.352682° W
 STATE PLANE COORDINATES: (US Feet)
 ZONE: OK NORTH
 X: 1896788.8
 Y: 670531.4

263809 Date of Drawing: Aug. 08, 2016
 Invoice # 230076B Date Staked: Sep. 4, 2014 JP

FINAL AS-DRILLED PLAT

AS-DRILLED INFORMATION
 FURNISHED BY CHESAPEAKE OPERATING, L.L.C.