

Oklahoma Corporation Commission
Oil & Gas Conservation Division
Post Office Box 52000
Oklahoma City, Oklahoma 73152-2000
Rule 165: 10-3-25

Form 1002A

API No.: 35003231100001

Completion Report

Spud Date: December 04, 2014

OTC Prod. Unit No.: 003-217782

Drilling Finished Date: February 11, 2015

1st Prod Date: August 18, 2016

Amended

Completion Date: July 27, 2016

Amend Reason: SHOW COMPLETION

Drill Type: HORIZONTAL HOLE

Min Gas Allowable: Yes

Well Name: JBH 11-27-11 2H

Purchaser/Measurer: CHESAPEAKE OPERATING LLC

Location: ALFALFA 2 27N 11W
SW SE SE SW
261 FSL 2003 FWL of 1/4 SEC
Derrick Elevation: 1202 Ground Elevation: 1180

First Sales Date: 08/18/2016

Operator: CHESAPEAKE OPERATING LLC 17441
PO BOX 18496
6100 N WESTERN AVE
OKLAHOMA CITY, OK 73154-0496

Completion Type		Location Exception		Increased Density	
X	Single Zone	Order No		Order No	
	Multiple Zone	629600		629598	
	Commingled				

Casing and Cement							
Type	Size	Weight	Grade	Feet	PSI	SAX	Top of CMT
SURFACE	13 3/8	48	J-55	422		392	SURFACE
INTERMEDIATE	9 5/8	36	J-55	1215		305	SURFACE
PRODUCTION	7	26	P-110EC	5486		260	2872

Liner								
Type	Size	Weight	Grade	Length	PSI	SAX	Top Depth	Bottom Depth
LINER	4 1/2	11.60	P-110	5066	0	515	5268	10334

Total Depth: 10334

Packer	
Depth	Brand & Type
5220	AS-3

Plug	
Depth	Plug Type
There are no Plug records to display.	

Initial Test Data										
Test Date	Formation	Oil BBL/Day	Oil-Gravity (API)	Gas MCF/Day	Gas-Oil Ratio Cu FT/BBL	Water BBL/Day	Pumpin or Flowing	Initial Shut-In Pressure	Choke Size	Flow Tubing Pressure
Aug 28, 2016	MISSISSIPPI LIME	634		1826	2880	2957	ARTIFICIA			193

Completion and Test Data by Producing Formation										
Formation Name: MISSISSIPPI LIME			Code: 351MSSLM			Class: OIL				
Spacing Orders				Perforated Intervals						
Order No	Unit Size			From			To			
317815	640			5350			10188			
Acid Volumes				Fracture Treatments						
9,000 GALLONS HCL ACID				44,983 BARRELS FRAC FLUID, 428,242 POUNDS PROPPANT						

Formation	Top
MISSISSIPPI LIME	5338

Were open hole logs run? No

Date last log run:

Were unusual drilling circumstances encountered? No

Explanation:

Other Remarks
OCC - THIS DOCUMENT IS ACCEPTED BASED ON THE DATA SUBMITTED THE FINAL LOCATION EXCEPTION HAS NOT BEEN SUBMITTED.

Lateral Holes
Sec: 11 TWP: 27N RGE: 11W County: ALFALFA
SW SW SW SE
186 FSL 2614 FEL of 1/4 SEC
Depth of Deviation: 4771 Radius of Turn: 419 Direction: 183 Total Length: 4996
Measured Total Depth: 10334 True Vertical Depth: 5190 End Pt. Location From Release, Unit or Property Line: 186

FOR COMMISSION USE ONLY
Status: Accepted
1134349

API NO. 35-003-23110
 OTC PROD.
 UNIT NO. 003-217782

PLEASE TYPE OR USE BLACK INK ONLY
 NOTE: Attach copy of original 1002A if recompletion or reentry.

OKLAHOMA CORPORATION COMMISSION
 Oil & Gas Conservation Division
 Post Office Box 52000
 Oklahoma City, Oklahoma 73152-2000
 Rule 165:10-3-25

RECEIVED Form 1002A
 653141 Rev. 2009

SEP 02 2016

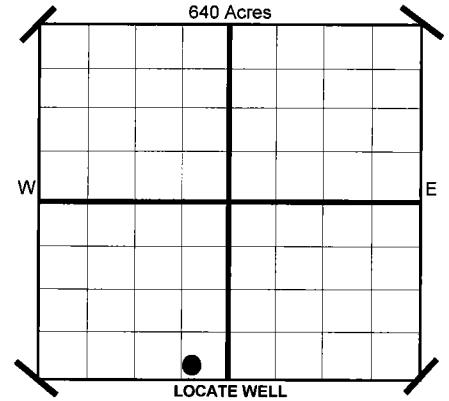
OKLAHOMA CORPORATION COMMISSION

ORIGINAL AMENDED
 Reason Amended *Show Completion*
 Reclassify as Producing Well

COMPLETION REPORT

TYPE OF DRILLING OPERATION
 STRAIGHT HOLE SERVICE WELL
 DIRECTIONAL HOLE
 HORIZONTAL HOLE
 If directional or horizontal, see reverse for bottom hole location.

SPUD DATE 12/4/2014
 DRLG FINISHED DATE 2/11/2015
 DATE OF WELL COMPLETION 7/27/2016
 1ST PROD DATE 8/18/2016
 RECOMP DATE
 Longitude (if Known)
 OTC/OCC OPERATOR NO. 17441



COUNTY ALFALFA SEC 2 TWP 27N RGE 11W
 LEASE NAME JBH 11-27-11 WELL NO 2H
 SHL FSL FWL OF 261 1/4 SEC 2,003
 ELEVATION Derrick Fl 1,202 Ground 1,180
 OPERATOR NAME CHESAPEAKE OPERATING, L.L.C.
 ADDRESS P.O. BOX 18496
 CITY OKLAHOMA CITY STATE OK ZIP 73154

COMPLETION TYPE

SINGLE ZONE
 MULTIPLE ZONE Application Date
 COMMINGLED Application Date
 LOCATION EXCEPTION ORDER NO. 629600 (INTERIM)
 INCREASED DENSITY ORDER NO. 629598

CASING & CEMENT (Form 1002C must be attached)

TYPE	SIZE	WEIGHT	GRADE	FEET	PSI	SAX	TOP
CONDUCTOR							
SURFACE	13 3/8"	48#	J-55	422		392	SURFACE
INTERMEDIATE	9 5/8"	36#	J-55	1,215		305	SURFACE
PRODUCTION	7"	26#	P-110EC	5,486		260	2,872
LINER	4 1/2"	11.60#	P-110	5,268-10,334		515	5,268

PACKER @ 5.220 BRAND & TYPE AS-3 PLUG @ TYPE PLUG @ TYPE TOTAL DEPTH 10,334
 PACKER @ BRAND & TYPE PLUG @ TYPE PLUG @ TYPE

COMPLETION & TEST DATA BY PRODUCING FORMATION

FORMATION	Mississippi Lime								
SPACING & SPACING ORDER NUMBER	640 317815								
CLASS: Oil, Gas, Dry, Inj. Disp, Comm Disp, Svc	OIL								
PERFORATED INTERVALS	5,350-10,188								
ACID/VOLUME	HCL ACID 9,000 GALS								
FRACTURE TREATMENT (Fluids/Prop Amounts)	FRAC FLUID 44,983 BBLs PROPPANT 428,242 LBS								

Reported to Frac Focus

Minimum Gas Allowable (165:10-17-7) Gas Purchaser/Measurer CHESAPEAKE OPERATING, L.L.C.
 OR 1st Sales Date 8/18/2016

INITIAL TEST DATA

INITIAL TEST DATE	8/28/2016						
OIL-BBL/DAY	634						
OIL-GRAVITY (API)							
GAS-MCF/DAY	1,826						
GAS-OIL RATIO CU FT/BBL	2,880						
WATER-BBL/DAY	2957						
PUMPING OR FLOWING	Artificial Lift						
INITIAL SHUT-IN PRESSURE							
CHOKE SIZE							
FLOW TUBING PRESSURE	193						

AS SUBMITTED

A record of the formations drilled through, and pertinent remarks are presented on the reverse. I declare that I have knowledge of the contents of this report and am authorized by my organization to make this report, which was prepared by me or under my supervision and direction, with the data and facts stated herein to be true, correct, and complete to the best of my knowledge and belief.

Sara Everett Signature Sara Everett, Regulatory Analyst 9/1/2016 DATE 405-848-8000 PHONE NUMBER
 P.O. BOX 18496 OKLAHOMA CITY OK 73154 ADDRESS CITY STATE ZIP
 sara.everett@chk.com EMAIL ADDRESS

PLEASE TYPE OR USE BLACK INK ONLY
FORMATION RECORD

Give formation names and tops, if available, or descriptions and thickness of formations drilled through. Show intervals cored or drillstem tested.

LEASE NAME JBH 11-27-11

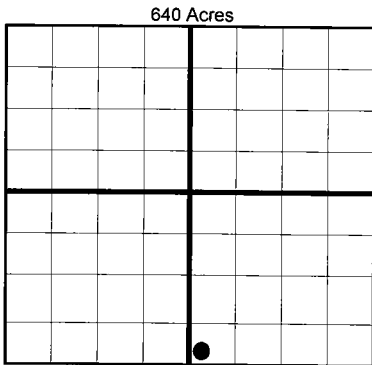
WELL NO. 2H

NAMES OF FORMATIONS	TOP
MISSISSIPPI LIME	5,338

FOR COMMISSION USE ONLY	
ITD on file	<input type="checkbox"/> YES <input type="checkbox"/> NO
APPROVED	DISAPPROVED
2) Reject Codes	

Were open hole logs run?	yes	<input checked="" type="checkbox"/>	no	
Date last log was run	N/A			
Was CO ₂ encountered?	yes	<input checked="" type="checkbox"/>	no	at what depths?
Was H ₂ S encountered?	yes	<input checked="" type="checkbox"/>	no	at what depths?
Were unusual drilling circumstances encountered?		yes	<input checked="" type="checkbox"/>	no
If yes, briefly explain.				

Other remarks:



BOTTOM HOLE LOCATION FOR DIRECTIONAL HOLE

SEC	TWP	RGE	COUNTY							
Spot Location				1/4	1/4	1/4	1/4	Feet From 1/4 Sec Lines	FSL	FWL
Measured Total Depth				True Vertical Depth		BHL From Lease, Unit, or Property Line:				

BOTTOM HOLE LOCATION FOR HORIZONTAL HOLE: (LATERALS)

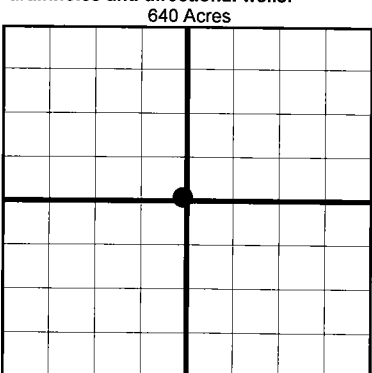
LATERAL #1

SEC	TWP	RGE	COUNTY														
11	27N	11W	ALFALFA	Spot Location			SW 1/4	SW 1/4	SE 1/4	Feet From 1/4 Sec Lines	FSL	186	FEL	2,614			
Depth of Deviation				4,771		Radius of Turn		419		Direction		183		Total Length		4,996	
Measured Total Depth				10,334		True Vertical Depth		5,190		BHL From Lease, Unit, or Property Line:						186	

If more than three drainholes are proposed, attach a separate sheet indicating the necessary information.

Direction must be stated in degrees azimuth. Please note, the horizontal drainhole and its end point must be located within the boundaries of the lease or spacing unit.

Directional surveys are required for all drainholes and directional wells.

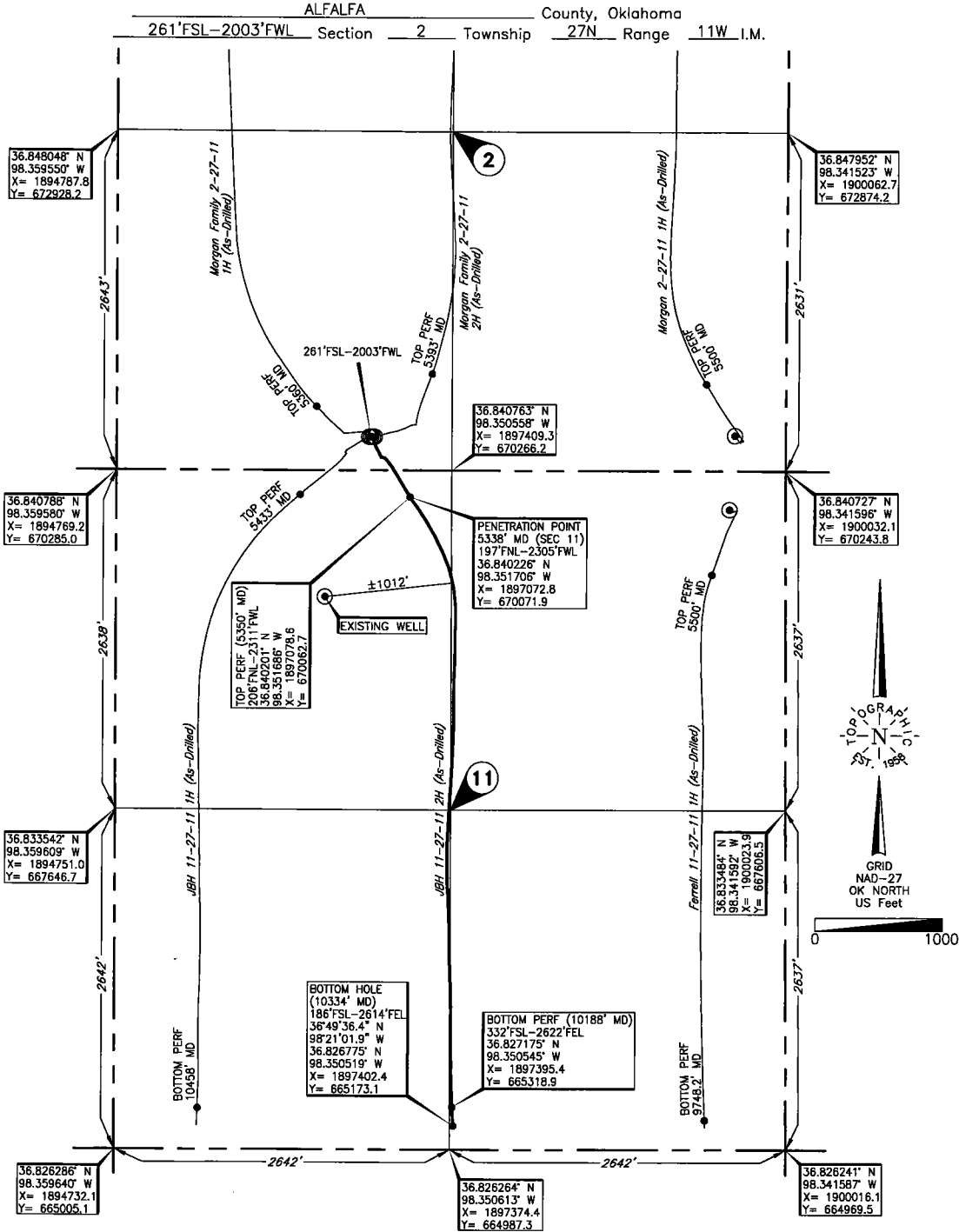


LATERAL #2

SEC	TWP	RGE	COUNTY								
Spot Location				1/4	1/4	1/4	1/4	Feet From 1/4 Sec Lines	FSL	FWL	
Depth of Deviation				Radius of Turn		Direction		Total Length			
Measured Total Depth				True Vertical Depth		BHL From Lease, Unit, or Property Line:					

LATERAL #3

SEC	TWP	RGE	COUNTY								
Spot Location				1/4	1/4	1/4	1/4	Feet From 1/4 Sec Lines	FSL	FWL	
Depth of Deviation				Radius of Turn		Direction		Total Length			
Measured Total Depth				True Vertical Depth		BHL From Lease, Unit, or Property Line:					



Operator: CHESAPEAKE OPERATING, L.L.C.
 Lease Name: JBH 11-27-11 Well No.: 2H **ELEVATION:** 1180' Gr. at Level Pad
 Topography & Vegetation Loc. fell on level pad, ±139' North of E-W pipeline, ±185' North of pipeline,
±224' East of N-S pipeline, ±265' East of N-S of pipeline
 Reference Stakes or Alternate Location
 Good Drill Site? Yes Stakes Set None
 Best Accessibility to Location From South off county road
 Distance & Direction
from Hwy Jct or Town From the Jct. of US. Hwy. 64 W-S and St. Hwy. 11 E-N, go ±3 miles North on St. Hwy. 11
to the SW Cor. of Sec. 2-T27N-R11W

This information was gathered with GPS receiver with ±1 foot horiz./vert. accuracy

DATUM: NAD-27
 LAT: 36°50'29.3"N
 LONG: 98°21'09.8"W
 LAT: 36.841485° N
 LONG: 98.352734° W
 STATE PLANE
 COORDINATES: (US Feet)
 ZONE: OK NORTH
 X: 1896773.6
 Y: 670531.3

263812 Date of Drawing: Aug. 08, 2016
 Invoice # 230076A Date Staked: Sep. 4, 2014 JP

FINAL AS-DRILLED PLAT

AS-DRILLED INFORMATION
 FURNISHED BY CHESAPEAKE OPERATING, L.L.C.