

Oklahoma Corporation Commission  
Oil & Gas Conservation Division  
Post Office Box 52000  
Oklahoma City, Oklahoma 73152-2000  
Rule 165: 10-3-25

Form 1002A

API No.: 35003231090001

**Completion Report**

Spud Date: December 01, 2014

OTC Prod. Unit No.: 003-217783

Drilling Finished Date: February 24, 2015

1st Prod Date: August 18, 2016

**Amended**

Completion Date: July 29, 2016

Amend Reason: SHOW COMPLETION

**Drill Type: HORIZONTAL HOLE**

Min Gas Allowable: Yes

Well Name: JBH 11-27-11 1H

Purchaser/Measurer: CHESAPEAKE OPERATING LLC

Location: ALFALFA 2 27N 11W  
SW SE SE SW  
261 FSL 1988 FWL of 1/4 SEC  
Derrick Elevation: 1202 Ground Elevation: 1180

First Sales Date: 08/18/2016

Operator: CHESAPEAKE OPERATING LLC 17441  
PO BOX 18496  
6100 N WESTERN AVE  
OKLAHOMA CITY, OK 73154-0496

Completion Type		Location Exception		Increased Density	
X	Single Zone	Order No		Order No	
	Multiple Zone	629599		629598	
	Commingled				

Casing and Cement							
Type	Size	Weight	Grade	Feet	PSI	SAX	Top of CMT
SURFACE	13 3/8	48	J-55	425		665	SURFACE
INTERMEDIATE	9 5/8	36	J-55	1217		305	SURFACE
PRODUCTION	7	26	P-110HC	5520		260	2921

Liner								
Type	Size	Weight	Grade	Length	PSI	SAX	Top Depth	Bottom Depth
LINER	4 1/2	11.60	P-110EC	5304	0	600	5289	10593

**Total Depth: 10593**

Packer	
Depth	Brand & Type
5229	AS-3

Plug	
Depth	Plug Type
There are no Plug records to display.	

Initial Test Data										
Test Date	Formation	Oil BBL/Day	Oil-Gravity (API)	Gas MCF/Day	Gas-Oil Ratio Cu FT/BBL	Water BBL/Day	Pumpin or Flowing	Initial Shut-In Pressure	Choke Size	Flow Tubing Pressure
Aug 28, 2016	MISSISSIPPI LIME	281		1535	5463	2353	ARTIFICIA			104

Completion and Test Data by Producing Formation										
Formation Name: MISSISSIPPI LIME			Code: 351MSSLM			Class: OIL				
<b>Spacing Orders</b>				<b>Perforated Intervals</b>						
<b>Order No</b>	<b>Unit Size</b>			<b>From</b>			<b>To</b>			
317815	640			5433			10458			
<b>Acid Volumes</b>				<b>Fracture Treatments</b>						
9,000 GALLONS HCL ACID				45,151 BARRELS FRAC FLUID, 415,045 POUNDS PROPPANT						

Formation	Top
MISSISSIPPI LIME	5384

Were open hole logs run? No

Date last log run:

Were unusual drilling circumstances encountered? No

Explanation:

Other Remarks
OCC - THIS DOCUMENT IS ACCEPTED BASED ON THE DATA SUBMITTED THE FINAL LOCATION EXCEPTION HAS NOT BEEN SUBMITTED.

Lateral Holes
Sec: 11 TWP: 27N RGE: 11W County: ALFALFA
SE SW SW SW
186 FSL 651 FWL of 1/4 SEC
Depth of Deviation: 4771 Radius of Turn: 492 Direction: 183 Total Length: 5209
Measured Total Depth: 10593 True Vertical Depth: 5263 End Pt. Location From Release, Unit or Property Line: 186

FOR COMMISSION USE ONLY
Status: Accepted
1134348

API NO. 35-003-23109  
 OTC PROD.  
 UNIT NO. 003-217783

PLEASE TYPE OR USE BLACK INK ONLY  
 NOTE: Attach copy of original 1002A if recompletion or reentry.

OKLAHOMA CORPORATION COMMISSION  
 Oil & Gas Conservation Division  
 Post Office Box 52000  
 Oklahoma City, Oklahoma 73152-2000  
 Rule 165:10-3-25

RECEIVED  
 653140  
 1002A Rev. 2/2009

SEP 02 2016

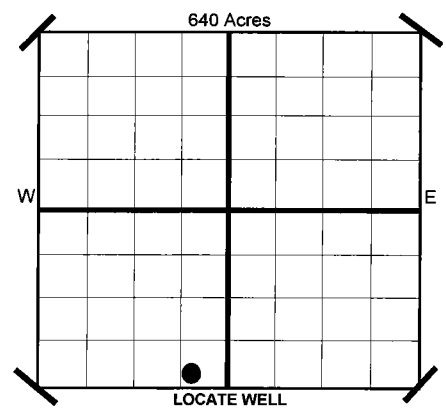
OKLAHOMA CORPORATION COMMISSION

ORIGINAL AMENDED  
 Reason Amended *Show Completion*  
 Reclassify as Producing Well

COMPLETION REPORT

TYPE OF DRILLING OPERATION  
 STRAIGHT HOLE SERVICE WELL  
 DIRECTIONAL HOLE  
 HORIZONTAL HOLE  
 If directional or horizontal, see reverse for bottom hole location.

SPUD DATE 12/1/2014  
 DRLG FINISHED DATE 2/24/2015  
 DATE OF WELL COMPLETION 7/29/2016  
 1ST PROD DATE 8/18/2016  
 RECOMP DATE  
 Longitude (if Known)  
 OTC/OCC OPERATOR NO. 17441



COUNTY ALFALFA SEC 2 TWP 27N RGE 11W  
 LEASE NAME JBH 11-27-11 WELL NO 1H  
 SHL FSL FWL OF 261 1/4 SEC 1,988  
 ELEVATION  
 Derrick Fl 1,202 Ground 1,180  
 OPERATOR NAME CHESAPEAKE OPERATING, L.L.C.  
 ADDRESS P.O. BOX 18496  
 CITY OKLAHOMA CITY STATE OK ZIP 73154

COMPLETION TYPE  
 SINGLE ZONE  
 MULTIPLE ZONE  
 Application Date  
 COMMINGLED  
 Application Date  
 LOCATION EXCEPTION ORDER NO. 629599 (INTERIM)  
 INCREASED DENSITY ORDER NO. 629598

CASING & CEMENT (Form 1002C must be attached)							
TYPE	SIZE	WEIGHT	GRADE	FEET	PSI	SAX	TOP
CONDUCTOR							
SURFACE	13 3/8"	48#	J-55	425		665	SURFACE
INTERMEDIATE	9 5/8"	36#	J-55	1,217		305	SURFACE
PRODUCTION	7"	26#	P-110HC	5,520		260	2,921
LINER	4 1/2"	11.60#	P-110EC	5,289-10,593		600	5,289

PACKER @ 5,229 BRAND & TYPE AS-3 PLUG @ TYPE PLUG @ TYPE TOTAL DEPTH 10,593  
 PACKER @ BRAND & TYPE PLUG @ TYPE PLUG @ TYPE

COMPLETION & TEST DATA BY PRODUCING FORMATION *351MSSLM*

FORMATION	MISSISSIPPI LIME						
SPACING & SPACING ORDER NUMBER	640 317815						
CLASS: Oil, Gas, Dry, Inj, Disp, Comm Disp, Svc	OIL						
PERFORATED INTERVALS	5,433-10,458						
ACID/VOLUME	HCL ACID 9,000 GALS						
FRACTURE TREATMENT (Fluids/Prop Amounts)	FRAC FLUID 45,151 BBLS PROPPANT 415,045 LBS						

*Reported to Free Focus*

Minimum Gas Allowable (165:10-17-7) Gas Purchaser/Measurer CHESAPEAKE OPERATING, L.L.C.  
 OR 1st Sales Date 8/18/2016  
 Oil Allowable (165:10-13-3)

INITIAL TEST DATA	
INITIAL TEST DATE	8/28/2016
OIL-BBL/DAY	281
OIL-GRAVITY ( API)	
GAS-MCF/DAY	1,535
GAS-OIL RATIO CU FT/BBL	5,463
WATER-BBL/DAY	2353
PUMPING OR FLOWING	Artificial Lift
INITIAL SHUT-IN PRESSURE	
CHOKE SIZE	
FLOW TUBING PRESSURE	104

**AS SUBMITTED**

A record of the formations drilled through, and pertinent remarks are presented on the reverse. I declare that I have knowledge of the contents of this report and am authorized by my organization to make this report which was prepared by me or under my supervision and direction, with the data and facts stated herein to be true, correct, and complete to the best of my knowledge and belief.

*Sara Everett* SIGNATURE Sara Everett, Regulatory Analyst NAME (PRINT OR TYPE) 9/1/2016 DATE 405-848-8000 PHONE NUMBER  
 P.O. BOX 18496 ADDRESS OKLAHOMA CITY CITY OK STATE 73154 ZIP [sara.everett@chk.com](mailto:sara.everett@chk.com) EMAIL ADDRESS

**PLEASE TYPE OR USE BLACK INK ONLY**  
FORMATION RECORD

Give formation names and tops, if available, or descriptions and thickness of formations drilled through. Show intervals cored or drillstem tested.

LEASE NAME JBH 11-27-11

WELL NO. 1H

NAMES OF FORMATIONS	TOP
MISSISSIPPI LIME	5,384

FOR COMMISSION USE ONLY

ITD on file  YES  NO

APPROVED \_\_\_\_\_ DISAPPROVED \_\_\_\_\_

2) Reject Codes

\_\_\_\_\_

\_\_\_\_\_

\_\_\_\_\_

\_\_\_\_\_

Were open hole logs run?      yes  no

Date Last log was run      N/A

Was CO<sub>2</sub> encountered?      yes  no at what depths?

Was H<sub>2</sub>S encountered?      yes  no at what depths?

Were unusual drilling circumstances encountered?      yes  no

If yes, briefly explain.

Other remarks:

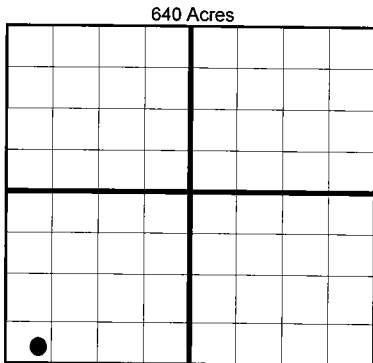
\_\_\_\_\_

\_\_\_\_\_

\_\_\_\_\_

\_\_\_\_\_

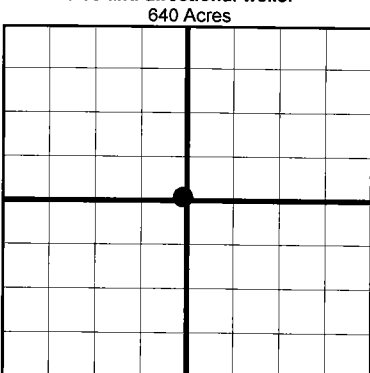
\_\_\_\_\_



If more than three drainholes are proposed, attach a separate sheet indicating the necessary information.

Direction must be stated in degrees azimuth. Please note, the horizontal drainhole and its end point must be located within the boundaries of the lease or spacing unit.

**Directional surveys are required for all drainholes and directional wells.**



**BOTTOM HOLE LOCATION FOR DIRECTIONAL HOLE**

SEC	TWP	RGE	COUNTY							
Spot Location				1/4	1/4	1/4	1/4	Feet From 1/4 Sec Lines	FSL	FWL
Measured Total Depth				True Vertical Depth		BHL From Lease, Unit, or Property Line:				

**BOTTOM HOLE LOCATION FOR HORIZONTAL HOLE: (LATERALS)**

**LATERAL #1**

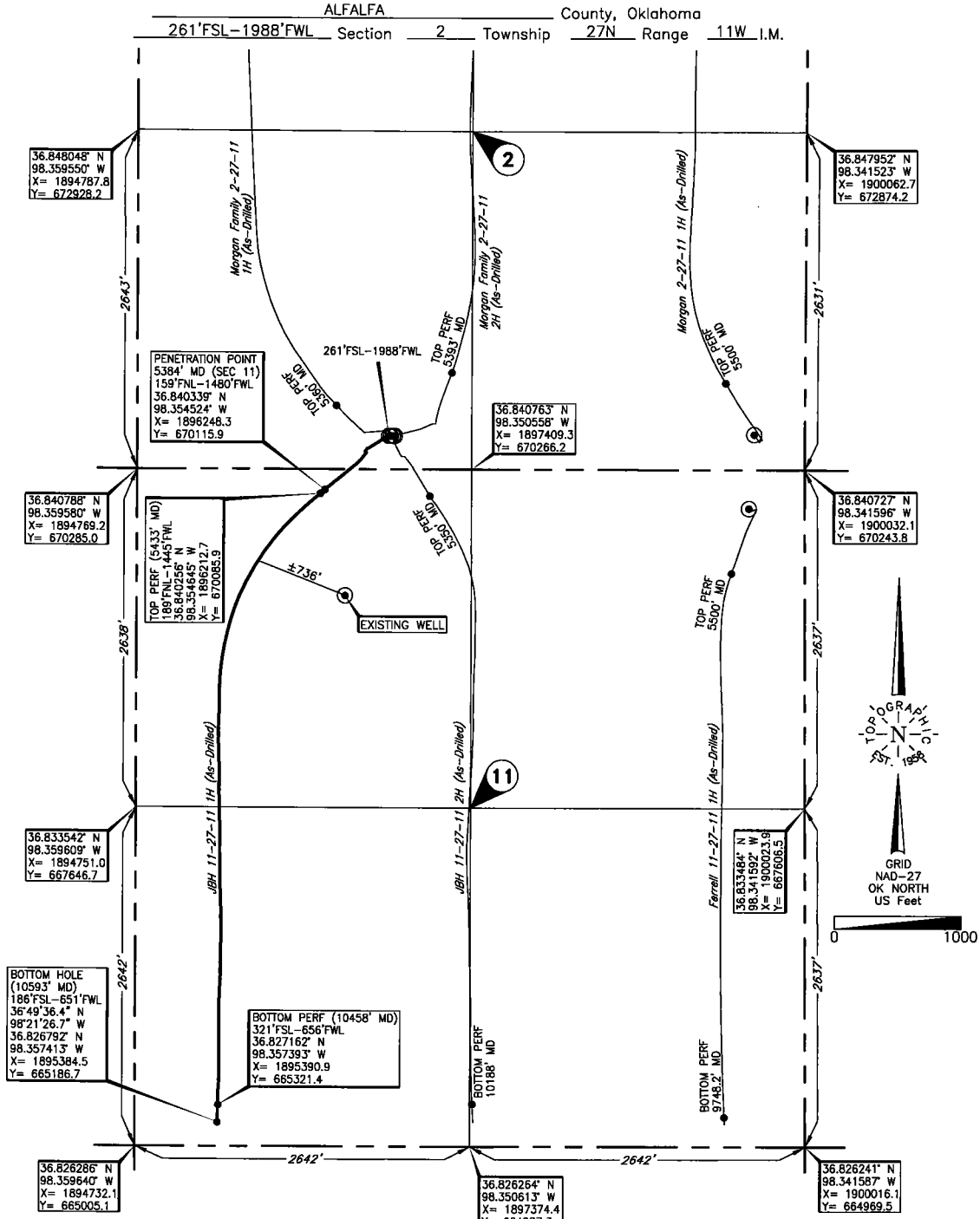
SEC	TWP	RGE	COUNTY							
11	27N	11W	ALFALFA							
Spot Location				SE 1/4	SW 1/4	SW 1/4	SW 1/4	Feet From 1/4 Sec Lines	FSL 186	FWL 651
Depth of Deviation				4,771		492		Direction 183	Total Length 5,209	
Measured Total Depth				10,593		5,263		BHL From Lease, Unit, or Property Line: 186		

**LATERAL #2**

SEC	TWP	RGE	COUNTY							
Spot Location				1/4	1/4	1/4	1/4	Feet From 1/4 Sec Lines	FSL	FWL
Depth of Deviation						Radius of Turn		Direction	Total Length	
Measured Total Depth						True Vertical Depth		BHL From Lease, Unit, or Property Line:		

**LATERAL #3**

SEC	TWP	RGE	COUNTY							
Spot Location				1/4	1/4	1/4	1/4	Feet From 1/4 Sec Lines	FSL	FWL
Depth of Deviation						Radius of Turn		Direction	Total Length	
Measured Total Depth						True Vertical Depth		BHL From Lease, Unit, or Property Line:		



This information was gathered with a GPS receiver with ±1 foot horizontal accuracy.